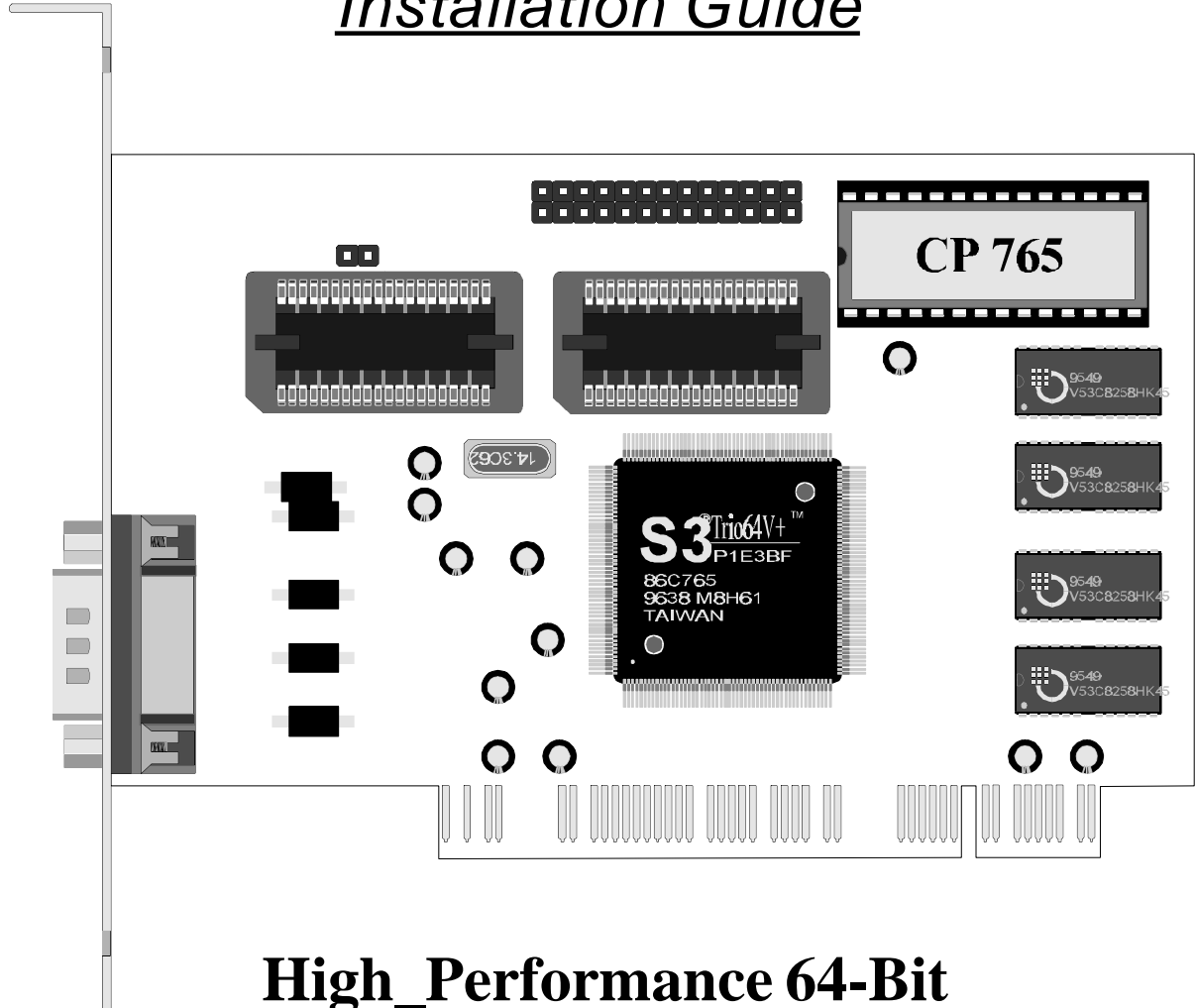


# S3 Trio64/Trio64V+

## Installation Guide



## **High\_Performance 64-Bit Video Accelerator PCI Bus**

### **TRADEMARK ACKNOWLEDGMENTS**

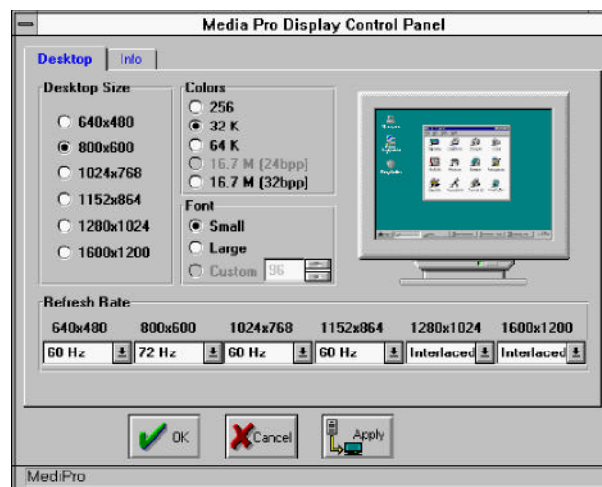
Microsoft is a trademark of Microsoft Corporation. AutoCAD, AutoShade are trademarks of AutoDesk Inc. XING and XingMPEG Player are trademarks of Xing Technology corporation. S3 and Trio are trademarks of S3 Incorporation. All brand names and trademarks are the property of their owners.

## Features

- High performance DRAM-based 64-bit graphics engine.
- Integrated 24-bit RAMDAC with 135 MHz output pixel.
- Unique S3 streams processor for hard-ware-assisted.  
Video playback. (S3 Trio64V + only)

## INSTALLATION Windows 3.x/Windows 95

To install the Windows Driver files, run the “**SETUP.EXE**” program on Diskette from the Windows program Manager(Windows 3.x) or Start menu (Windows 95). The setup program will detect the Windows version you use and copy the VGA tool, Windows driver and support files to your hard drive. The setup program will place a “**Uninstaller**” icon on program group which you can run it to un-install this package.



## Desktop

The Desktop dialog allows you to configure your desktop size, color depth, font size and refresh rate.

## Info

View Desktop driver, chipset information.

# **S3®XING™-MPEG™ Driver Installation**

## **(S3 Trio64V+ only)**

### **Installation From a Floppy Diskette**

1. Install an S3 Windows driver compatible with DCI 1.6.
2. Launch Windows 3.x or Windows 95.
3. Insert the S3/Xing Native-MPEG Driver diskette in the appropriate diskette drive.
4. Run the SETUP program on the diskette in the Windows environment. After a successful installation, the SETUP program will automatically restart Windows.

### **Resolution Table**

<i>GRAPHICS RESOLUTION</i>	<i>COLOR DEPTH</i>	<i>FRAME BUFFER SIZE(MB)</i>
640 X 480	256	1 MB
640 X 480	32K/64K	1 MB
800 X 600	256	1 MB
800 X 600	32K/64K	1 MB
1064 X 768	256	1 MB
640 X 480	16.7M	2 MB
800 X 600	16.7M	2 MB
1064 X 768	32K/64K	2 MB
1280 X 1024	256	2 MB
1600 X 1200	256	2 MB

### **Memory Upgrade Procedures**

To upgrade your S3 Trio64/Trio64V+VGA from default 1MB memory to 2MB memory, Please complete the following steps:

1. Turn off your system before removing the S3 Trio64/Trio64V+ Card. Place the adapter on a firm, flat, non-static hard surface.
2. Insert the 256Kx16 DRAMs into the two available 40 pin SOJ sockets, make sure the notched edge of the chip corresponds to the notch at one end of the sockets.
3. Re-insert the cad and power up your system.

## **Windows NT 3.51**

To install the enhanced display drivers for Windows NT3.51, you must be running NT and follow Microsoft's standard display driver installation procedure as documented in the NT user manual. From the NT Program Manager, double-click on the NT Control Panel program in the Main program folder. Then select the display applet in the Control Panel to Change the display driver. Select a supported display mode from the drive and directory containing the NT drivers, e.g., A:\Winnt351. If separate drivers are provided on the software distribution diskette for different versions of NT, be sure to enter the drive and directory where the appropriate NT drivers are located. Refer to your NT user manual for full instructions.