
CV18 Installation Guide

All brands and product names within this guide are the property of their respective owners. Shuttle assumes no responsibility for any errors or omissions. Nor does shuttle make any commitment to update information, with or without prior notification.

Internet: <http://www.shuttle.com>

CV18 User Manual Ver 1.0

M575

1: INTRODUCTION

CV18 is a 4-port Universal Serial Bus (USB) Hub card which fully compliant USB specification revision 2.0 and 1.1 interface. It provides 4 downstream facing ports in the root hub which support both full-speed and low-speed devices by automatically setting the slew rate according to the speed of the device attached to the ports.

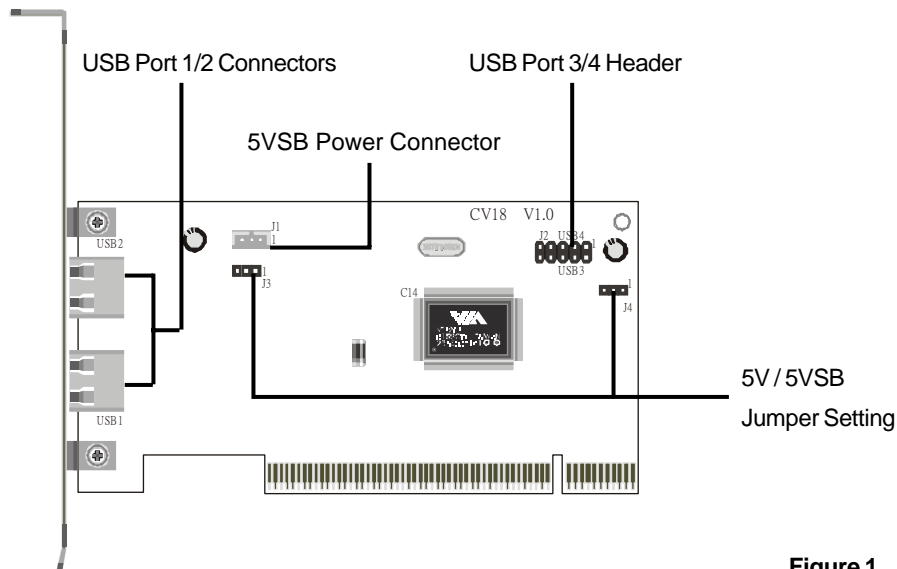


Figure 1

2: SPECIFICATION

- Compliant with Universal Serial Bus Specification Revision 2.0
- Compliant with Enhanced Host Controller Interface Specification Revision 0.95.
- Compliant with Universal Host Controller Interface Specification Revision 1.1
- Supports PCI-Bus Power Management Interface Specification release 1.1
- Full support of real time dynamic insertion and removal of devices.
- Supports legacy keyboard and mouse devices.

3: PACKAGE CHECKLIST

The CV18 complete package should include:

- CV18 (USB 2.0 Hub PCI Add-on card)
- Optional Port 3 and Port 4 extended cable
- 5V Standby power cable
- This manual

4: HARDWARE INSTALLATION

1. Adjust oncard 5V/5VSB jumpers J3 and J4 to desired position (please refer to Table 1)
Note: 5VSB supports PCI-Bus Power Management 1.1
2. Switch off your system and turn off all other peripheral you may have attached to your computer, then remove your computer cover.
3. Find out one empty PCI slot on your motherboard.
4. Carefully insert CV18 into PCI slot firmly. Fasten CV18 bracket to your computer with the screw, and replace the computer cover. (please refer to Figure 2)
5. Connect 5VSB connector J1 to WOL connector on the motherboard by attached power cable.
6. Connecting USB devices to USB connectors and turn on your system.

J3 & J4	
1 - 2	5V
2 - 3	5V StandBy

Table 1

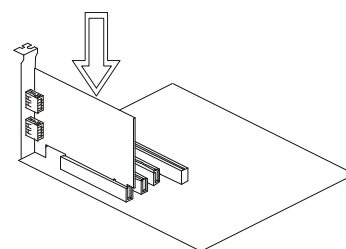


Figure 2

5: SOFTWARE INSTALLATION

Insert the attached CD into your CD-ROM drive and the CD AutoRun screen should appear. If the AutoRun screen does not appear, double click on Autorun icon in My Computer to bring up Shuttle Software Setup screen. (Figure 3)

Using your pointing device (e.g. mouse) on the **Install USB 2.0 Driver** bar to install driver. When you have completed software installation, a new device will be found, you can check up the **Device Manager** screen of **System Properties** category as shown below. (Figure 4)

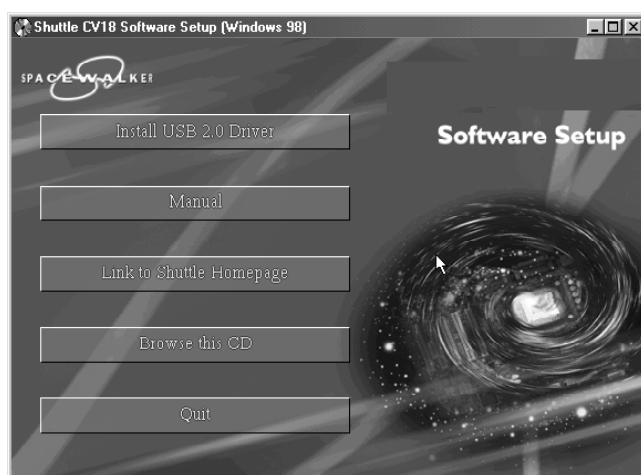


Figure 3

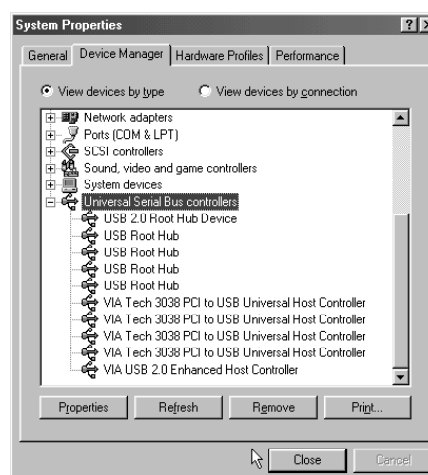


Figure 4