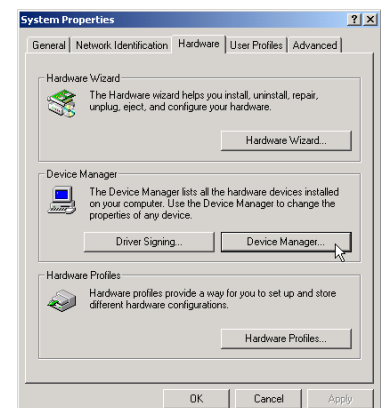

Install WIN2000

The LAN Device Driver can't be set up automatically, you need double click on **My Computer** -> **Control Panel** -> **System** icon to bring up **System Properties** screen.

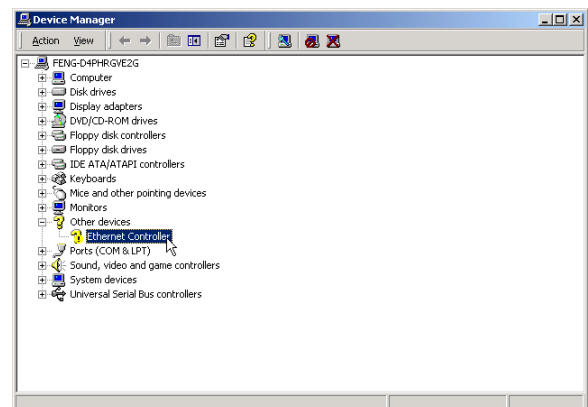
Select tab "**Hardware**" and then "**Device Manager**" bar.



The **Device Manager** windows will appear on your screen.

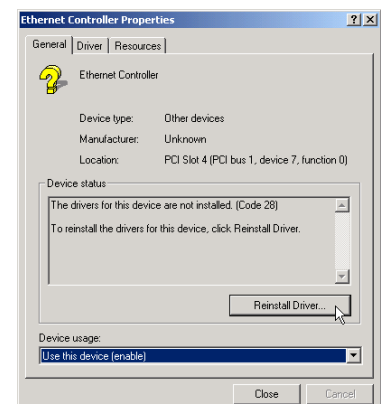
You will find a yellow "?" mark on **Ethernet Controller**, that means the driver is not recognized.

Double click on the **Ethernet Controller**.



Then **Ethernet Controller Properties** windows will appear on your screen.

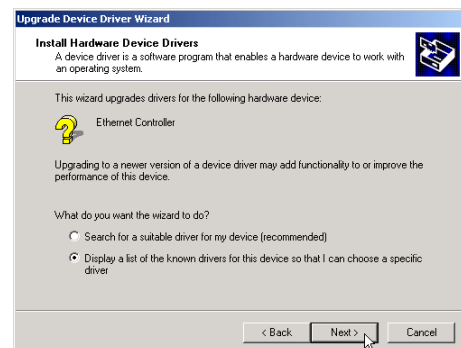
Click on the "**Reinstall Driver**" bar to install driver.



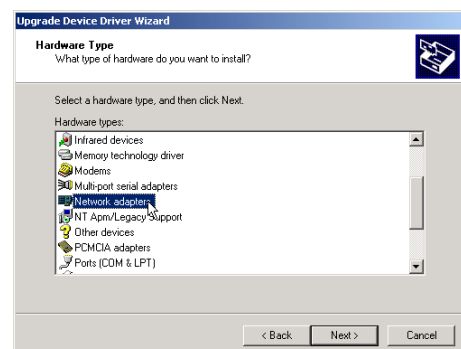
The **Upgrade Device Driver Wizard** windows will appear on your screen.
Click on **"Next"** bar to continue.



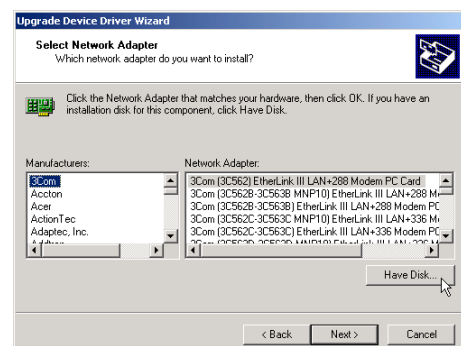
Please choose **"Display a list of the known drivers for this device so that I can choose a specific driver"** to the manual install driver, and click on **"Next"** bar to continue.



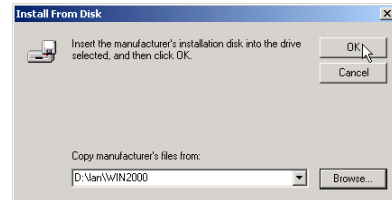
Select **"Network adapter"** bar for LAN device and click on **"Next"** bar to continue.



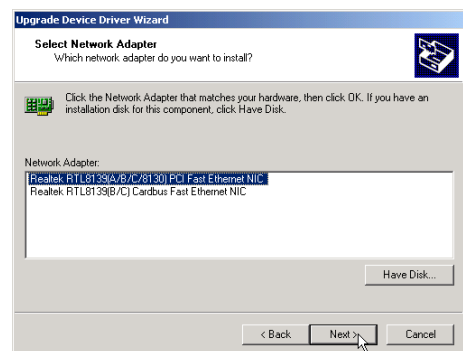
Insert the support CD by the mainboard manufacturer and choose **"Have Disk"** bar to continue next step.



Indicate the driver's location as
"D:\lan\WIN2000\NETRTS5.INF" (In this location CD disk drive is supposed to be **"D"** letter.)

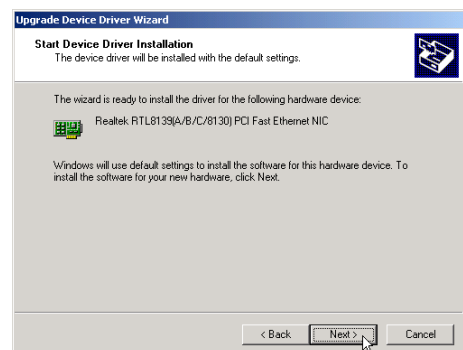


Select **"Realtek RTL8139 [A/B/C/8130] PCI Fast Ethernet NIC"** to install, and then click on **"Next"**.

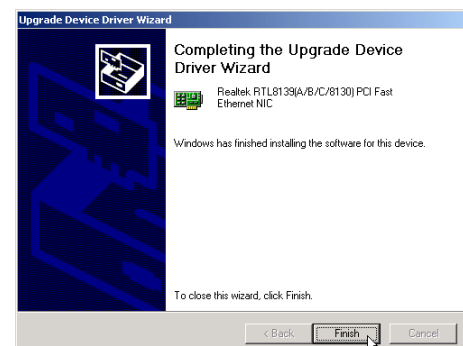


Make sure **"Realtek RTL8139 [A/B/C/8130] PCI Fast Ethernet NIC"** driver, and click on **"Next"**.

Then the system will do the setup automatically.



Completing the upgrade device driver, and click on **"Finish"** to restart the system to take all the changes effect.



After restart, you may check Network adapters under the location mentioned at right figure.
The Network adapters shows correctly.

