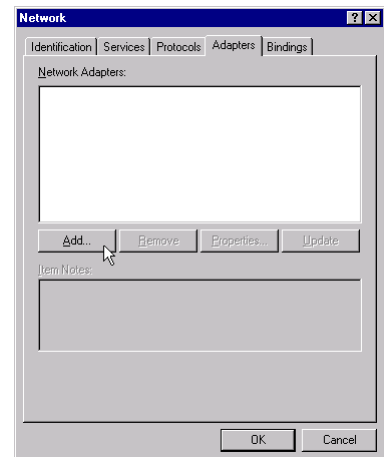


---

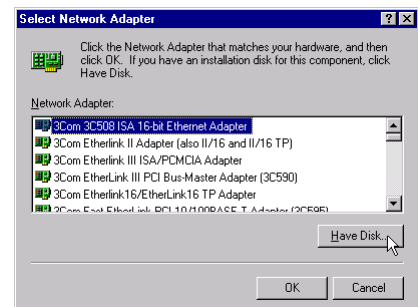
## Install WINNT

The LAN Device Driver can't be set up automatically, you need double click on **My Computer** -> **Control Panel** -> **Network** icon to bring up **Network** screen.

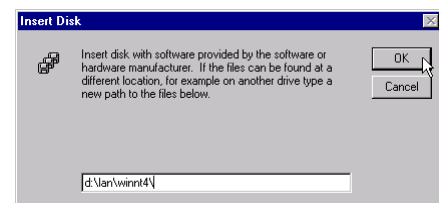
Select tab "**Adapters**" and "**Add**" bar to install driver.



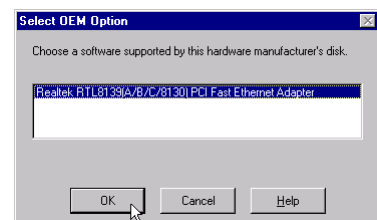
Insert the support CD by the mainboard manufacturer and choose "**Have Disk**" bar to continue next step.



Key in the driver's location as "**D:\lan\WINNT4\**" (In this location CD disk drive is supposed to be "**D**" letter.) and click on "**OK**".



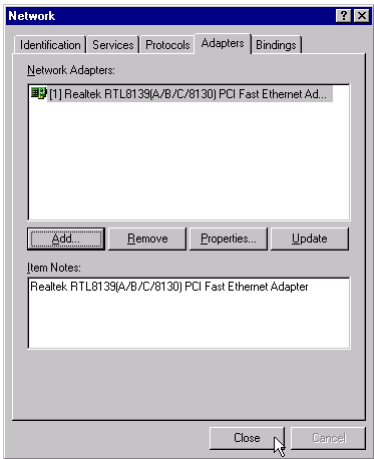
Select "**Realtek RTL8139 [A/B/C/8130] PCI Fast Ethernet Adapter**" to install then click on "**OK**".



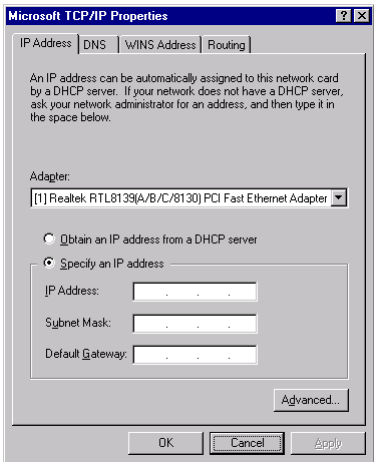
Choose the proper Duplex Mode, and click on "**OK**".



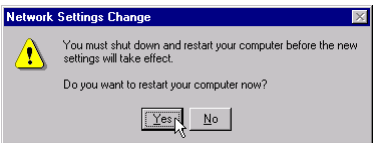
Make sure **"Realtek RTL8139 [A/B/C/8130] PCI Fast Ethernet Adapter"** driver, and click on **"Close"**.



Setting yourself network.  
Then the system will do the setup  
automatically.



Completing the upgrade device driver,  
and click on **"Yes"** to restart the system  
to take all the changes effect.



After restart, you may check Network  
adapters under the location mentioned  
at right figure. The Network adapters  
shows correctly.

