

# *Shuttle Media Center*

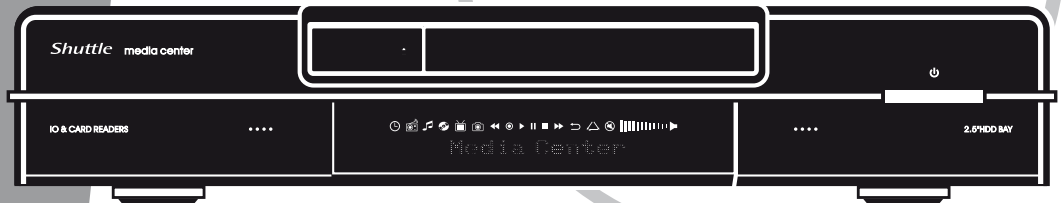
# Shuttle

Create

Access

Connect

Experience



# *Software Guide*

# Shuttle Digital Hub Software Guide

---

Shuttle®

Shuttle Digital Hub Software Guide

## Copyright

Copyright 2006 by Shuttle® Inc. All Rights Reserved.

No part of this publication may be reproduced, transcribed, stored in a retrieval system, translated into any language, or transmitted in any form or by any means, electronic, mechanical, magnetic, optical, chemical, photocopying, manual, or otherwise, without prior written permission from Shuttle® Inc.

## Disclaimer

Shuttle® Inc. shall not be liable for any incidental or consequential damages resulting from the performance or use of this product. This company makes no representations or warranties regarding the contents of this manual.

Information in this manual has been carefully checked for reliability; however, no guarantee is given as to the correctness of the contents. In the interest of continued product improvement, this company reserves the right to revise the manual or include changes in the specifications of the product described within it at any time without notice and without obligation to notify any person of such revision or changes. The information contained in this manual is provided for general use by customers.

This device complies with Part 15 of the FCC Rules, Operation is subject to the following two conditions:

1. This device may not cause harmful interference.
2. This device must accept any interference received, including interference that may cause undesired operation.

## Trademarks

Shuttle is a registered trademark of Shuttle Inc.

Intel and Pentium are registered trademarks of Intel Corporation.

PS/2 is a registered trademark of IBM Corporation.

AWARD is a registered trademark of Award Software Inc.

Microsoft and Windows are registered trademarks of Microsoft Corporation.

## General Notice

Other brand and product names used herein are for identification purposes only and may be trademarks of their respective owners.

PAR-MAM200-H001

---

# TABLE OF CONTENTS

---


<b>1</b>	<b>First time to setup Media Center.....</b>	<b>1</b>
<b>2</b>	<b>watching and Recording TV Programs .....</b>	<b>14</b>
	<b>■ Watching TV .....</b>	<b>14</b>
	<b>■ Recording TV .....</b>	<b>16</b>
<b>3</b>	<b>Playing Music Files .....</b>	<b>18</b>
<b>4</b>	<b>Working with Pictures .....</b>	<b>19</b>
<b>5</b>	<b>Playing Videos .....</b>	<b>20</b>
<b>6</b>	<b>Playing DVDs .....</b>	<b>21</b>
<b>7</b>	<b>Listening to FM Radio.....</b>	<b>22</b>
<b>8</b>	<b>Online Spotlight .....</b>	<b>23</b>

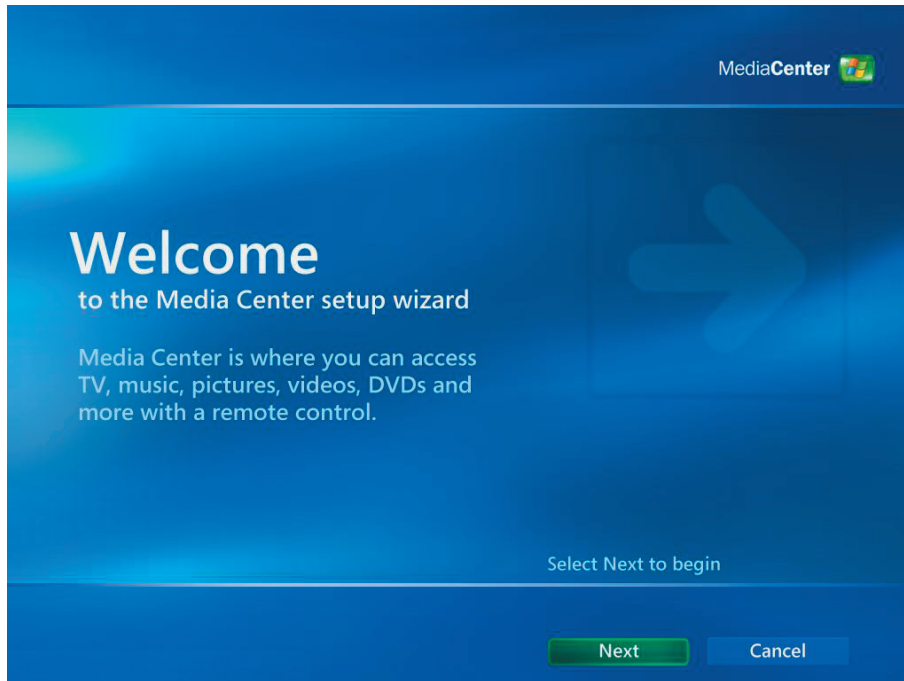
---

---

# 1. First time to setup Media Center

---

- (1) Press the Media Center Start button  on the remote control or Keyboard. You will see the Media Center setup wizard.
- (2) Press **Next**.



- (1) You should complete 2 sections, **Required Setup** or **Optional Setup**.
- (2) Press **Next**.





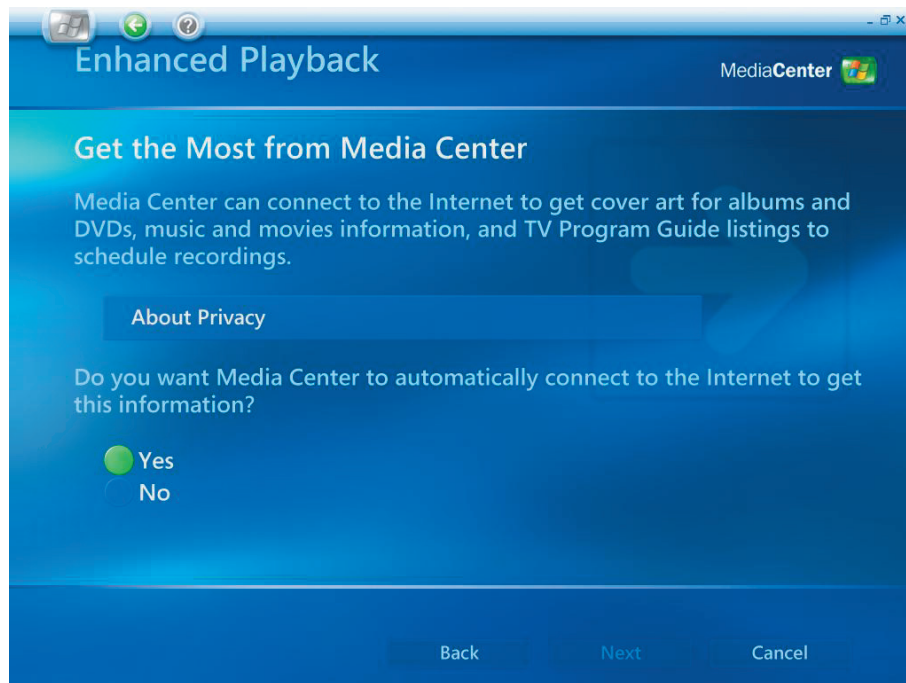
- 
- (1) Please read the **Microsoft Media Center Privacy Policy**.
  - (2) Press **Next**.



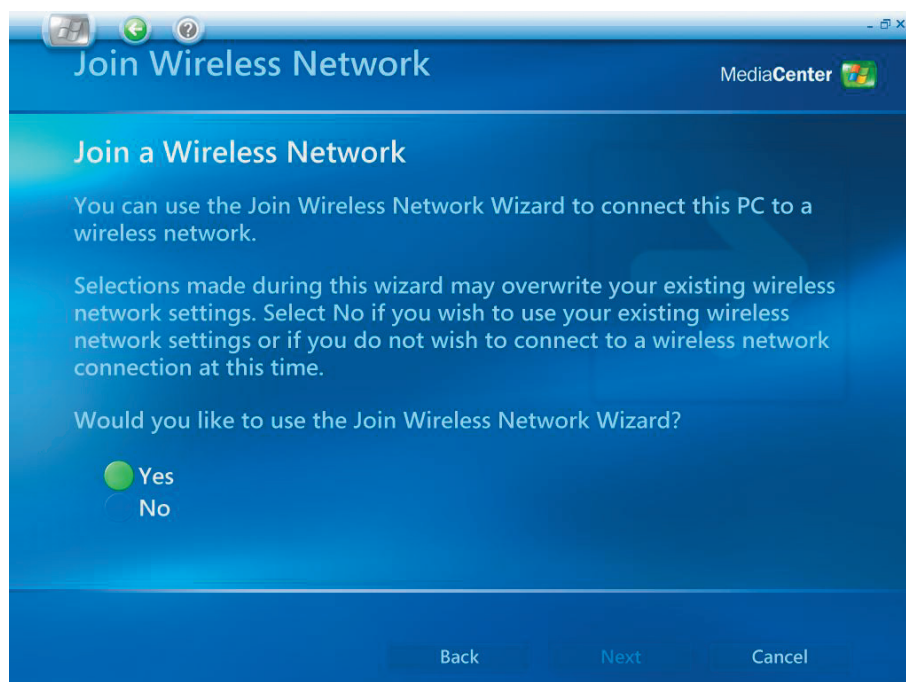
- (1) User can choose to join the **Customer Experience Improvement Program** or not.
- (2) Press **Next**.



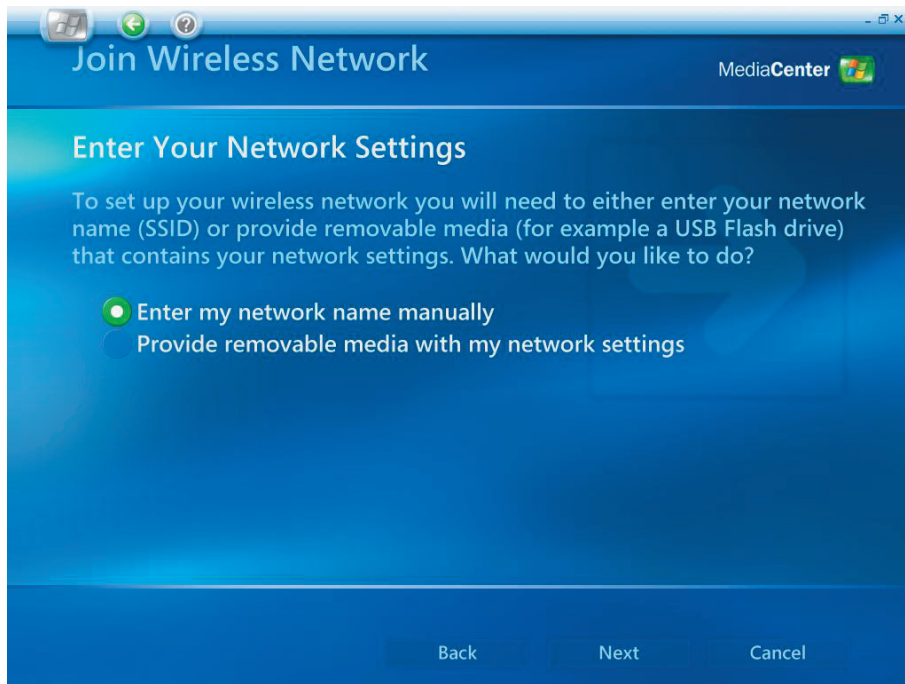
- 
- (1) User can choose that **Media Center** automatically connect to the internet to get the information.
  - (2) Press **Next**.



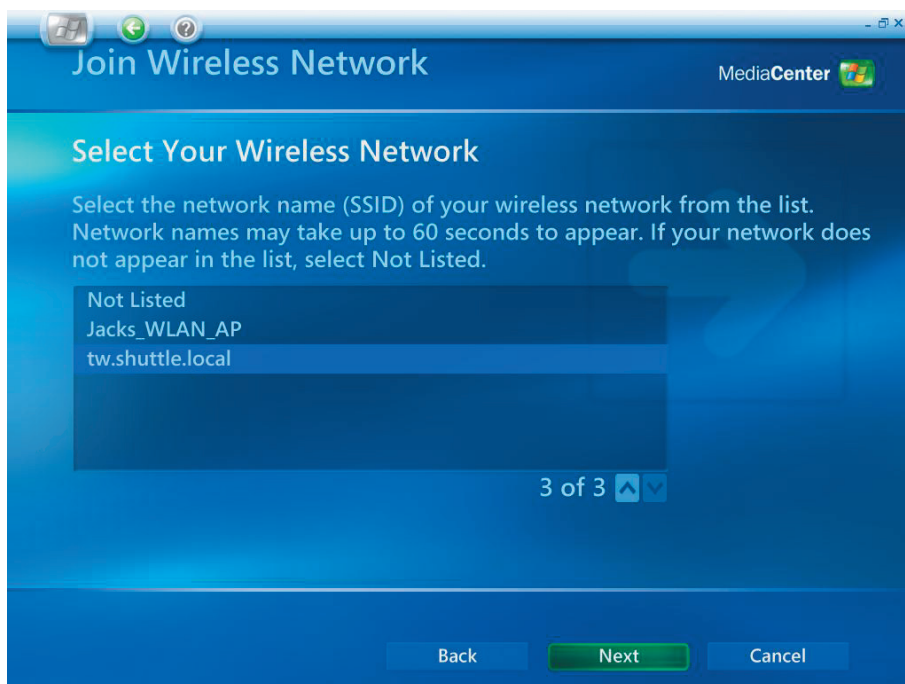
- (1) Shuttle Media Center has bundled a **802.11g Wireless Lan**. Choose **"Yes"** to join **Wireless Network Wizard**.
- (2) Press **Next**.



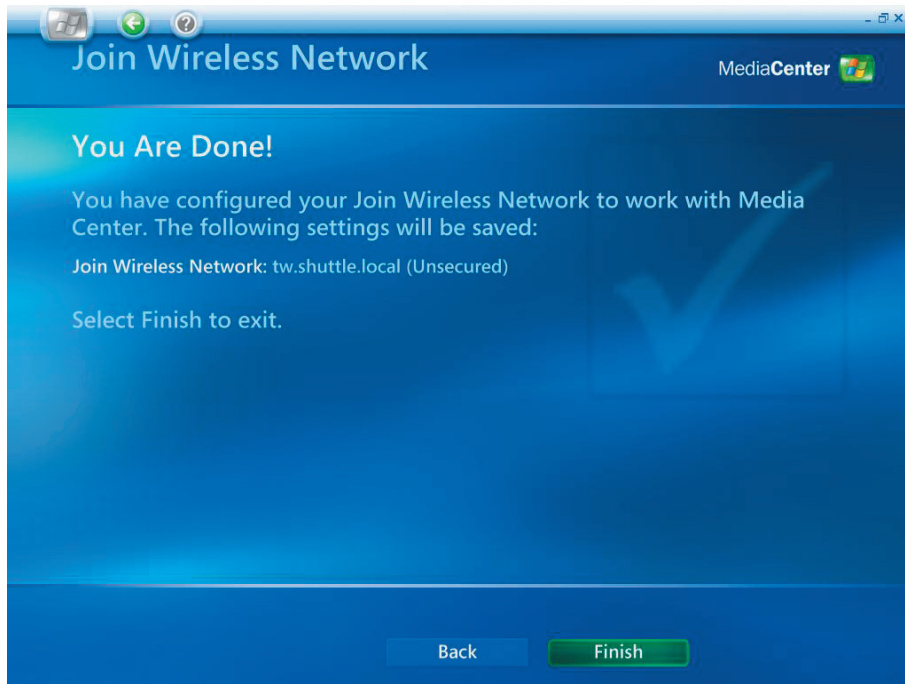
- 
- (1) Select "Enter my network name manually".
  - (2) Press **Next**.



- (1) Select your wireless network.
- (2) Press **Next**.



- 
- (1) You have configured your wireless network.
  - (2) Select **Finish** to exit.



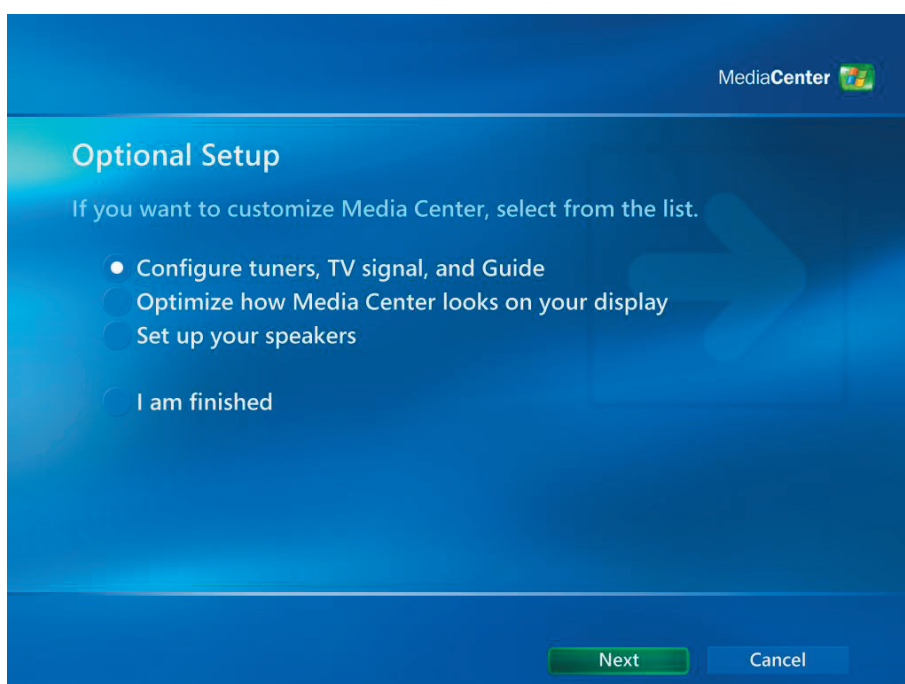
- (1) If you have an **"Always on"** internet connection, please choose **"Yes"** .
- (2) Press **Next**.



- 
- (1) Select **"Test"** to make sure your internet connection is all right.
  - (2) Press **Next**.

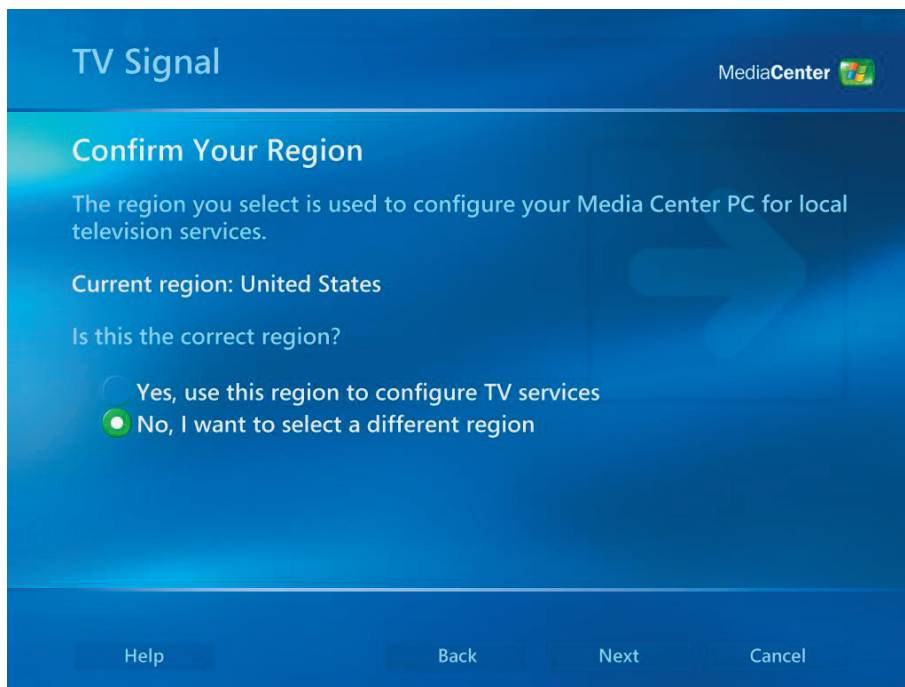


- (1) Select **"Configure tuners, TV signal, and Guide"** of optional setup.
- (2) Press **Next**.

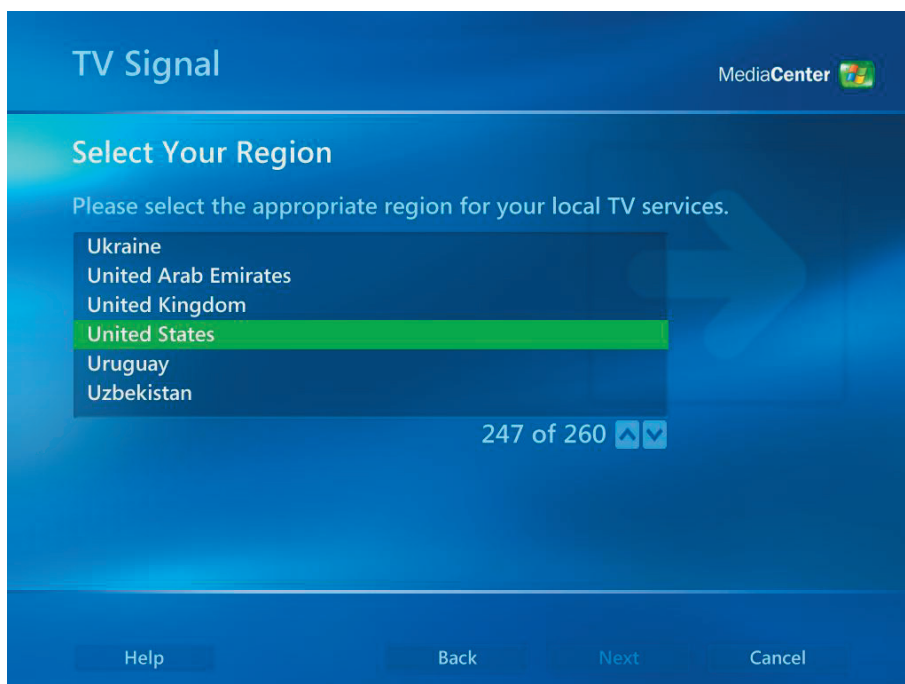




- 
- (1) Please select **"No, I want to select a different region"**.
  - (2) Press **Next**.



- (1) Please select the appropriate region for your local TV services".
- (2) Press **Next**.



- 
- (1) Please select **"I will manually configure my TV signal"**.
  - (2) Press **Next**.

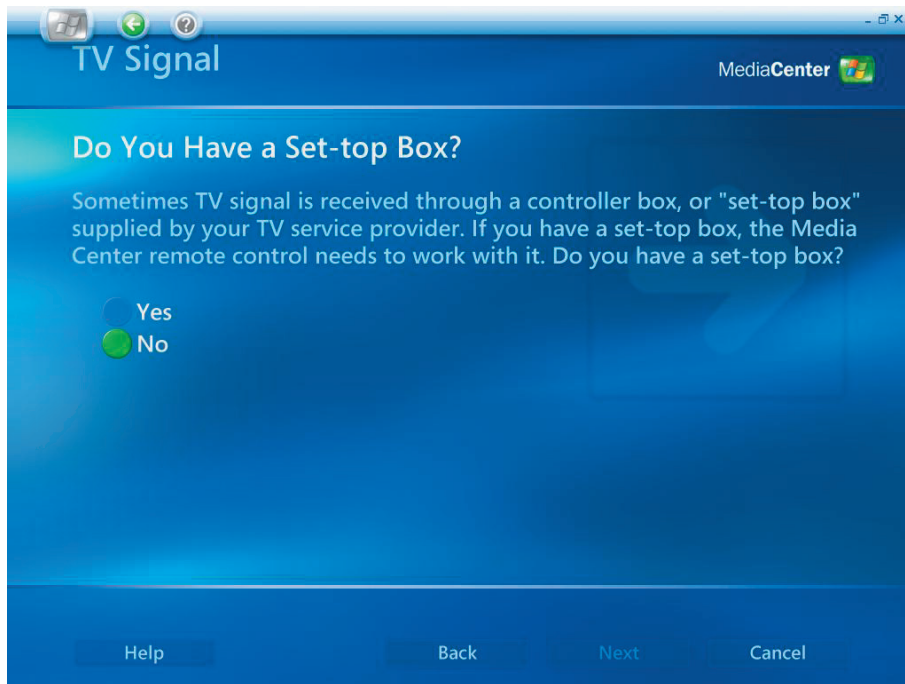


- (1) Please select the source of your TV signal.
- (2) Press **Next**.



(1) Please choose **"Yes"** if you have a Set-top Box, otherwise, choose **"No"**.

(2) Press **Next**.



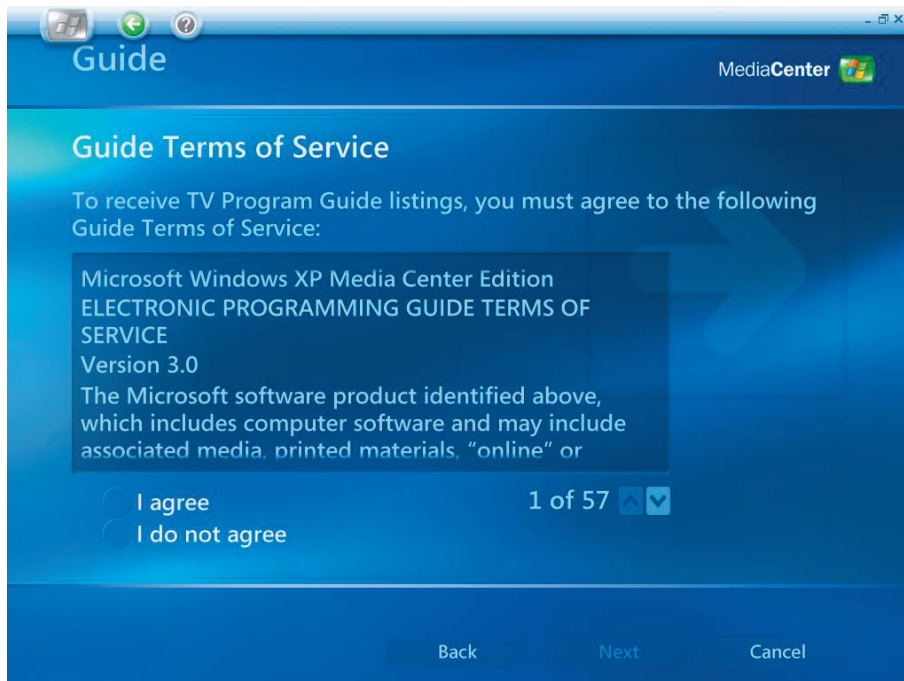
(1) Select **"Yes"** if you want to have a TV program guide.

(2) Press **Next**.

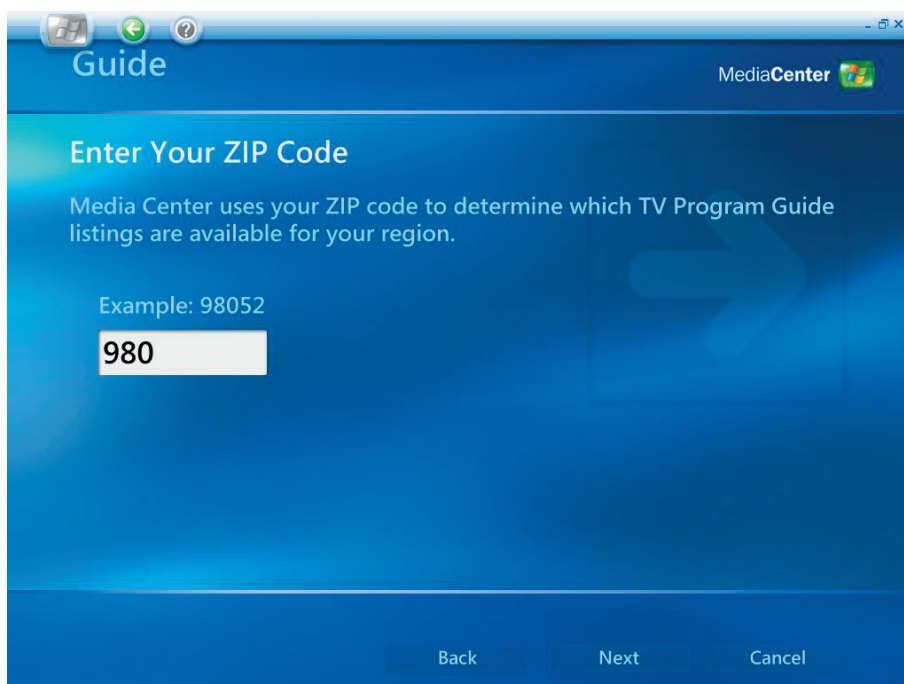




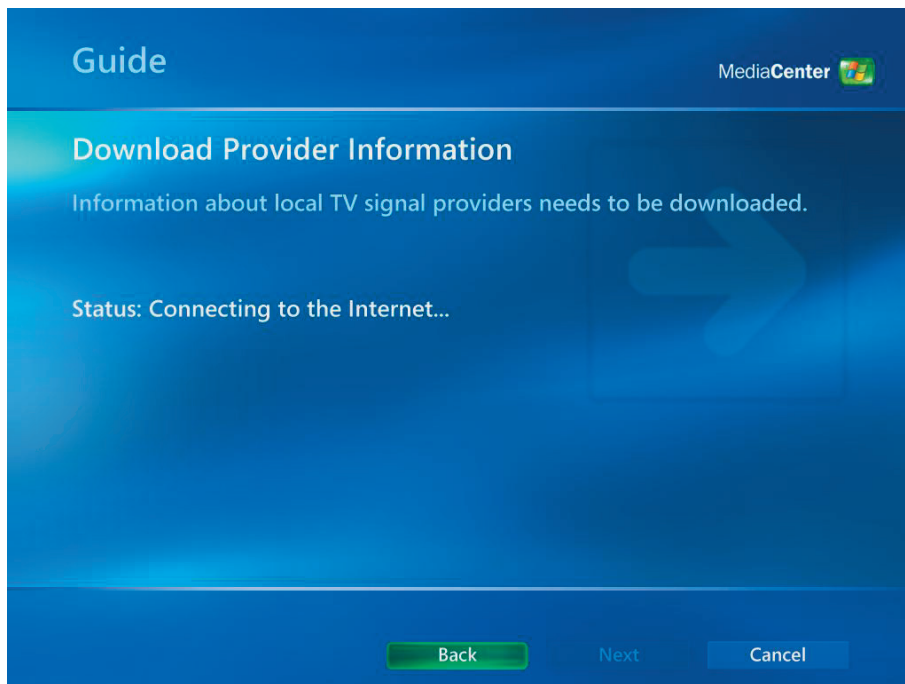
- 
- (1) Please read the TV program guide terms of service and select **"I agree"**.
  - (2) Press **Next**.



- (1) Please enter your **ZIP Code**.
- (2) Press **Next**.



- 
- (1) You can download the **Provider Information**.
  - (2) Press **Next**.



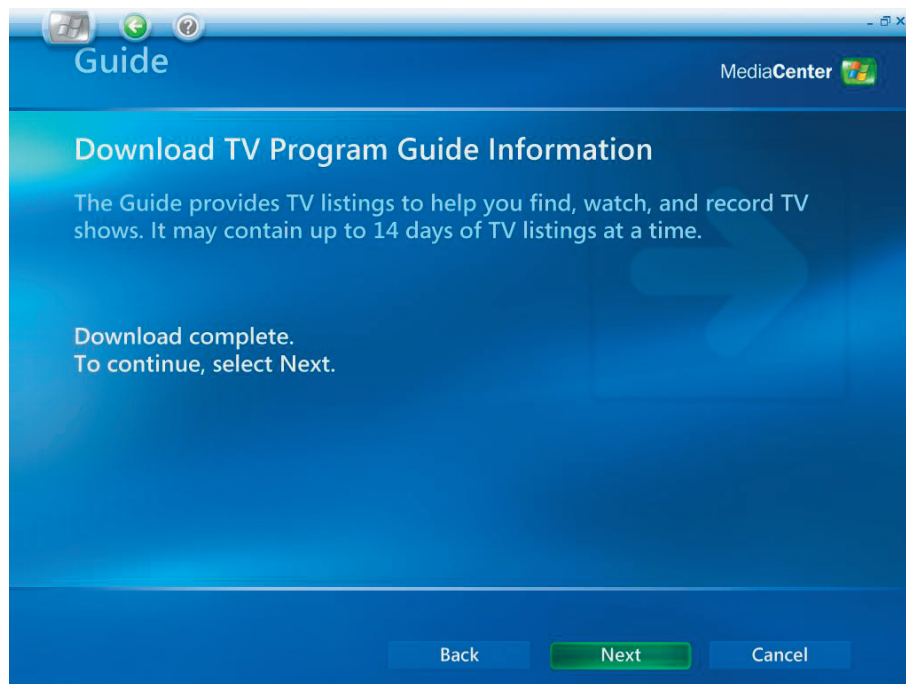
- (1) Please select the TV signal provider.
- (2) Press **Next**.



---

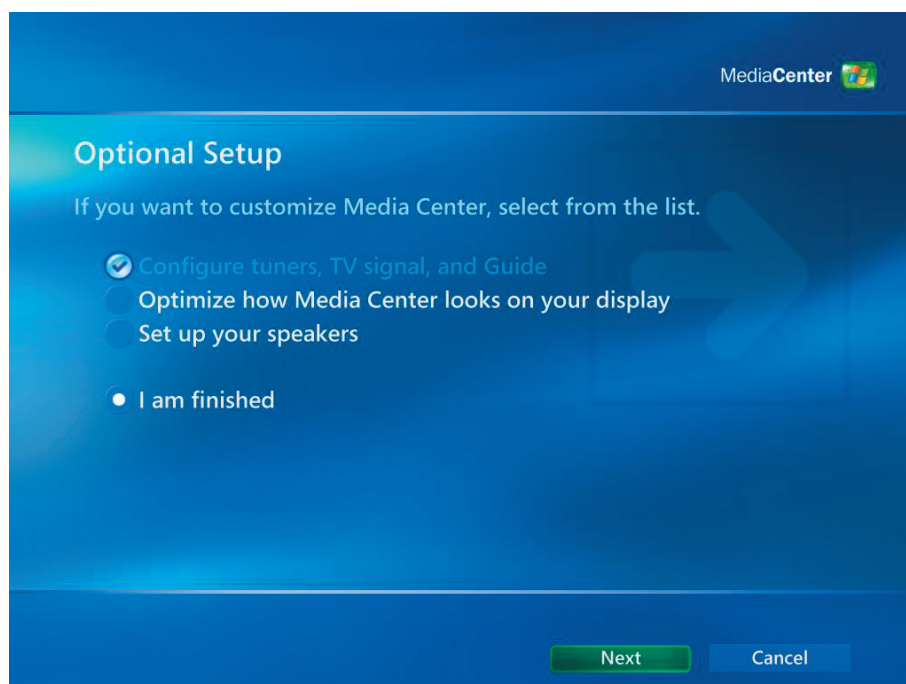
(1) You can download the **TV program guide information**.

(2) Press **Next**.



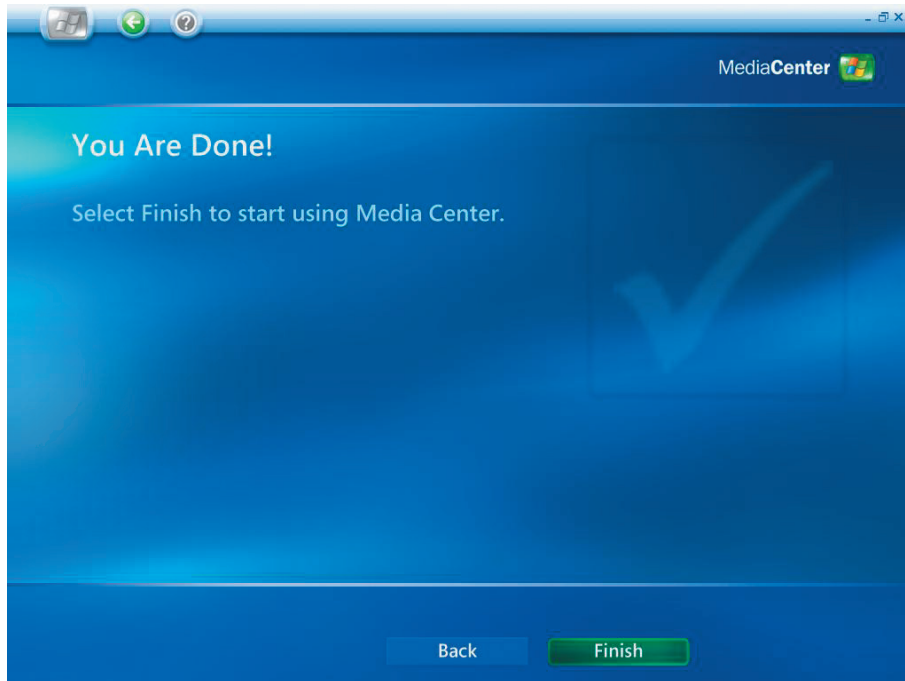
(1) You can customize Media Center by yourself, otherwise, please select **"I am finished"**.

(2) Press **Next**.



---

(1) Please select **Finish** to start using Media Center.



## 2. Watching and Recording TV Programs

### ■ Watching TV

(1) You can watch TV show by selecting **"My TV"**.

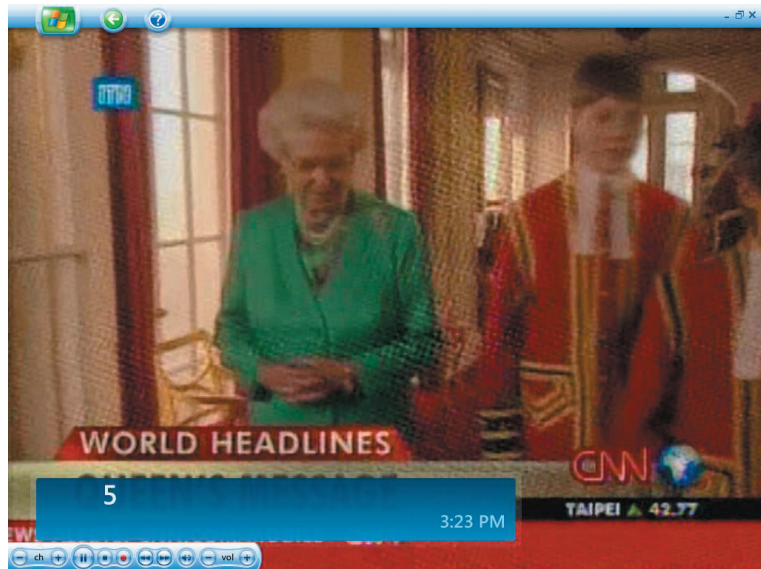



(2) Please select **"Live TV"** to watch TV shows.





- (3) User can select a channel by using the **CH/PG (+),(-)** buttons or the numeric keypad on the remote control. The channel number and program information are displayed on the screen.



- (4) Press , the more information button to open another menu with the following options and information:
- A zoom option.
  - Access to Messenger and Settings windows.
  - Program information such as channel number station, title, time period of program, actual time, and a brief summary of the program and TV rating, if they are available. Otherwise, recording options are also shown.



---

## ■ Recording TV

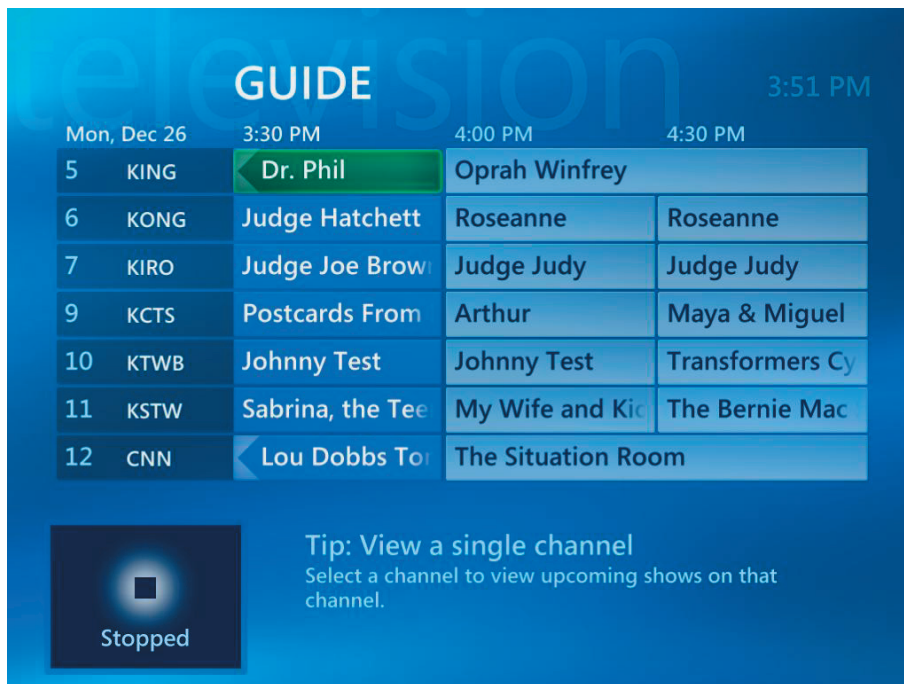
(1) Please select **"Recorded TV"** to record TV show.



(2) Please select **"Guide"** to get more information of the TV show.



(3) You can get the information of each TV channel by using the **"Guide"** function.

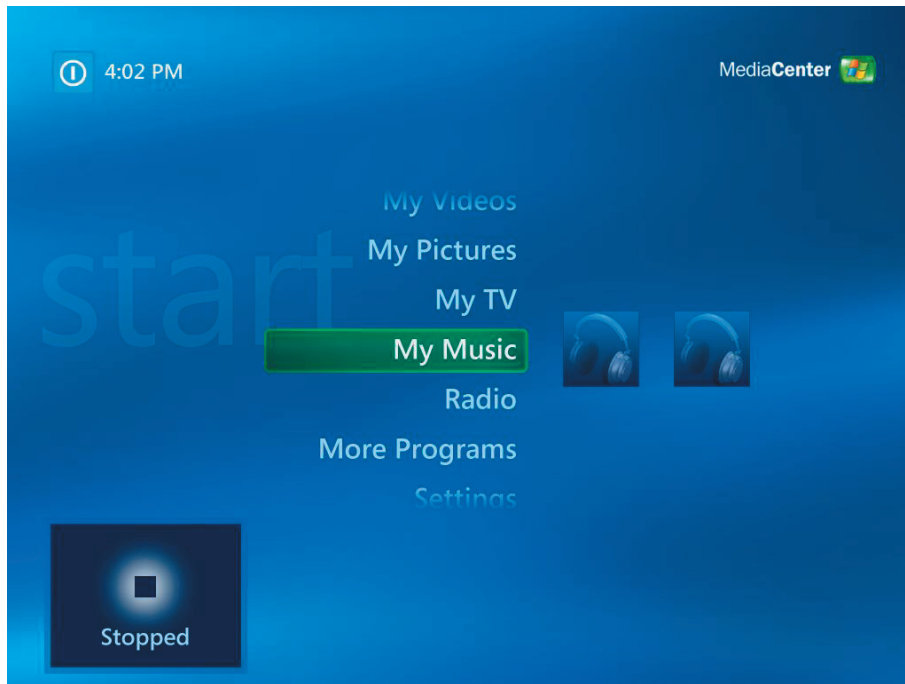




### 3. Playing Music Files

---

(1) Select **"My Music"**.

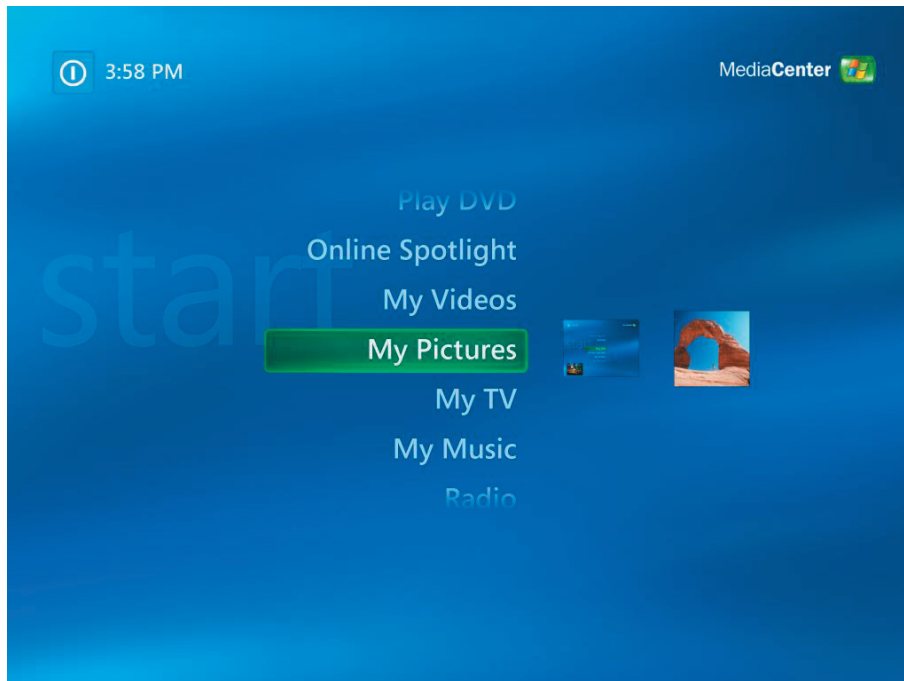


(2) You can play a song or get information by selecting these alternative items.

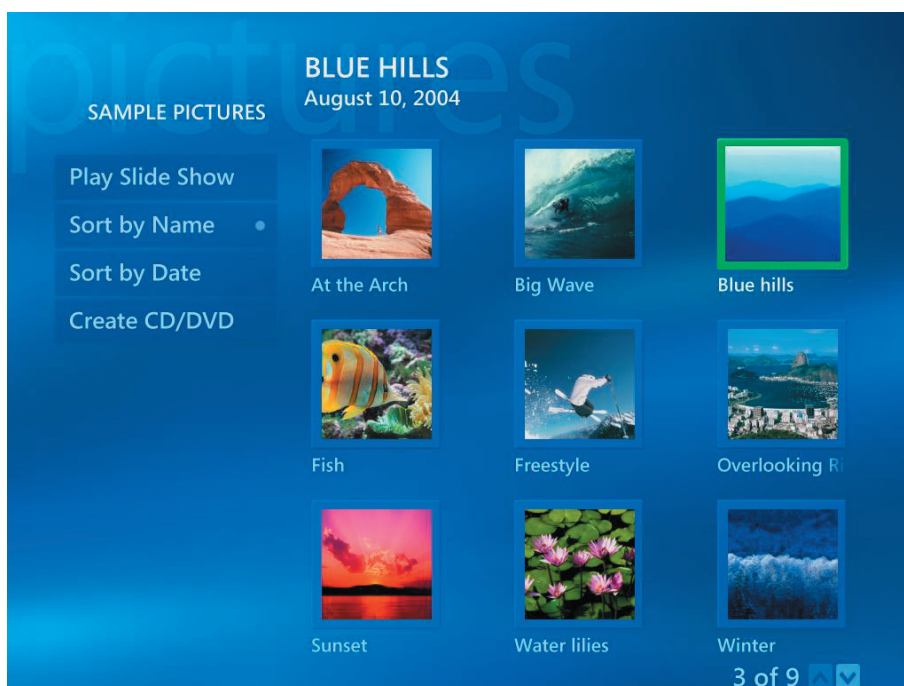


## 4. Working with Pictures

(1) You can browse your pictures by selecting **"My Pictures"**.

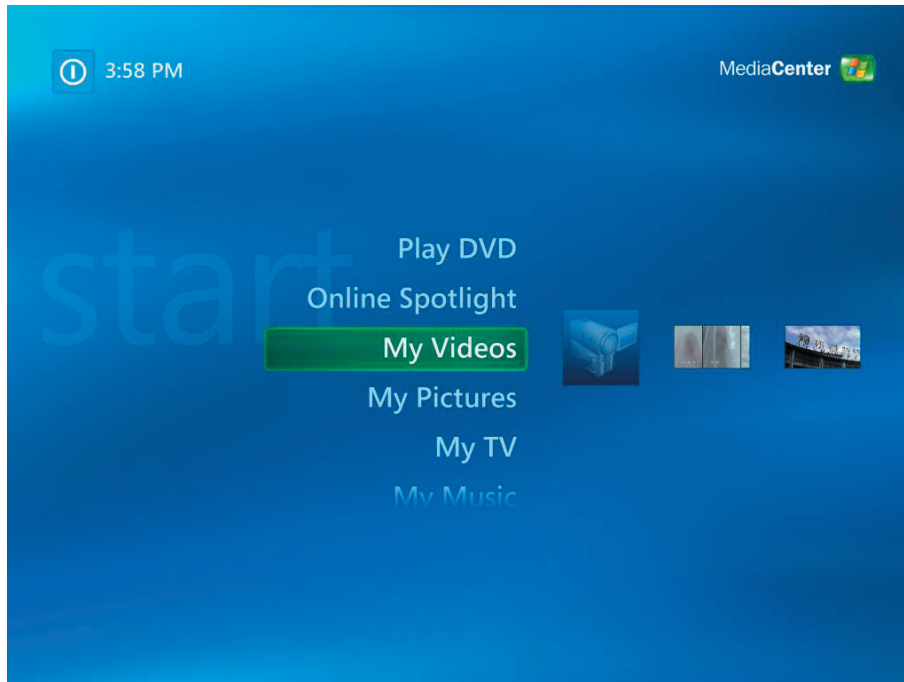


(2) You can browse pictures by using different way and create CD/DVD by yourself.

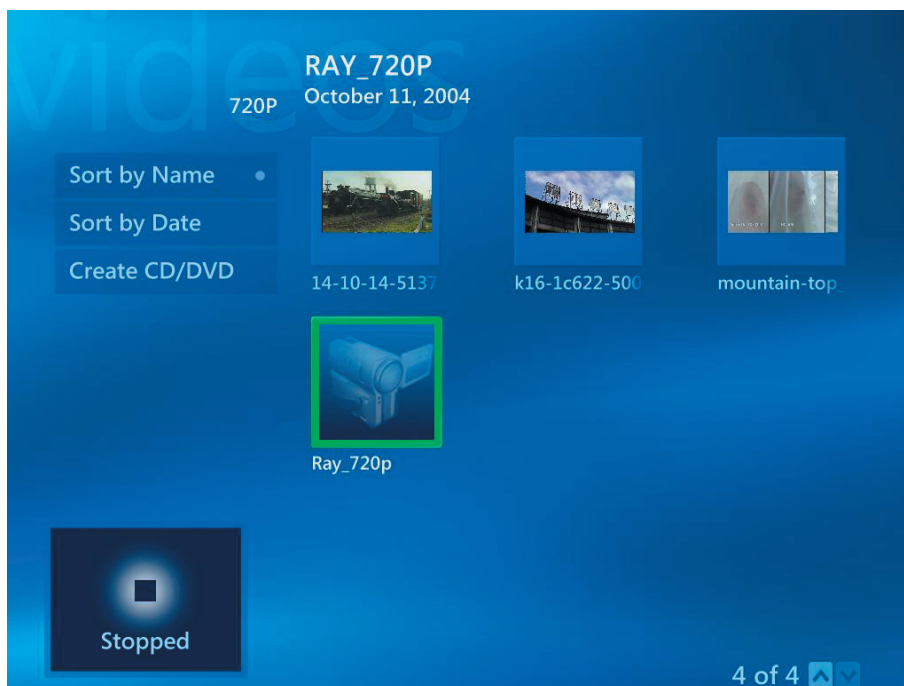


## 5. Playing Videos

(1) You can watch videos by select **"My Videos"**.



(2) You can watch videos and create CD/DVD by yourself.



## 6. Playing DVDs

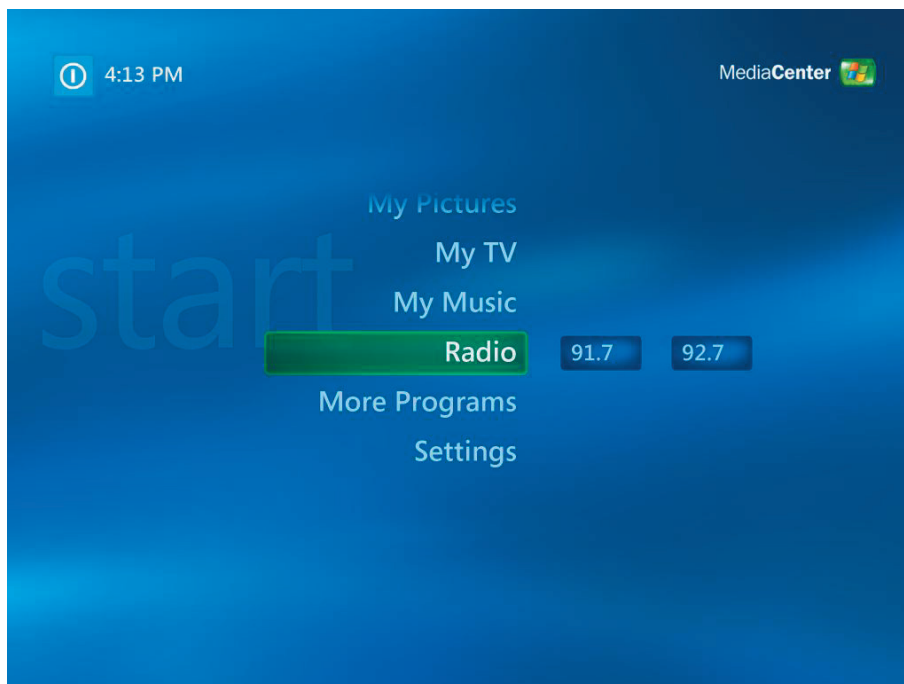
---

(1) You can see the DVD title by selecting **"Play DVD"**.



## 7. Listening to FM Radio

(1) You can listen FM Radio by selecting **"Radio"**.



*In Radio you can:*

- Listen FM radio.
- Set up pre-sets of your favorite radio stations.
- Delete or organize your radio station pre-sets.
- Use the time-shifting feature; pause, rewind, and fast-forward up to 30 minutes of radio programs.



## 8. Online Spotlight

(1) You can get movie on line services by selecting **"Online Spotlight"**.

