



nVIDIA®

ForceWare Software

NVIDIA RAID User's Guide

Version 1.1

**NVIDIA Corporation
February 23, 2004**

Published by
NVIDIA Corporation
2701 San Tomas Expressway
Santa Clara, CA 95050

Notice

ALL NVIDIA DESIGN SPECIFICATIONS, REFERENCE BOARDS, FILES, DRAWINGS, DIAGNOSTICS, LISTS, AND OTHER DOCUMENTS (TOGETHER AND SEPARATELY, "MATERIALS") ARE BEING PROVIDED "AS IS." NVIDIA MAKES NO WARRANTIES, EXPRESSED, IMPLIED, STATUTORY, OR OTHERWISE WITH RESPECT TO THE MATERIALS, AND EXPRESSLY DISCLAIMS ALL IMPLIED WARRANTIES OF NONINFRINGEMENT, MERCHANTABILITY, AND FITNESS FOR A PARTICULAR PURPOSE.

Information furnished is believed to be accurate and reliable. However, NVIDIA Corporation assumes no responsibility for the consequences of use of such information or for any infringement of patents or other rights of third parties that may result from its use. No license is granted by implication or otherwise under any patent or patent rights of NVIDIA Corporation. Specifications mentioned in this publication are subject to change without notice. This publication supersedes and replaces all information previously supplied. NVIDIA Corporation products are not authorized for use as critical components in life support devices or systems without express written approval of NVIDIA Corporation.

Trademarks

NVIDIA, the NVIDIA logo, 3DFX, 3DFX INTERACTIVE, the 3dfx Logo, STB, STB Systems and Design, the STB Logo, the StarBox Logo, NVIDIA nForce, GeForce, NVIDIA Quadro, NVDVD, NVIDIA Personal Cinema, NVIDIA Soundstorm, Vanta, TNT2, TNT, RIVA, RIVA TNT, VODOO, VODOO GRAPHICS, WAVEBAY, Accuvision Antialiasing, the Audio & Nth Superscript Design Logo, CineFX, the Communications & Nth Superscript Design Logo, Detonator, Digital Vibrance Control, DualNet, FlowFX, ForceWare, GIGADUDE, Glide, GOFORCE, the Graphics & Nth Superscript Design Logo, Intellisample, M-BUFFER, nfiniteFX, NV, NVChess, nView, NVKeystone, NVOptimizer, NVPinball, NVRotate, NVSensor, NVSync, the Platform & Nth Superscript Design Logo, PowerMizer, Quincunx Antialiasing, Sceneshare, See What You've Been Missing, StreamThru, SuperStability, T-BUFFER, The Way It's Meant to be Played Logo, TwinBank, TwinView and the Video & Nth Superscript Design Logo are registered trademarks or trademarks of NVIDIA Corporation in the United States and/or other countries. Other company and product names may be trademarks or registered trademarks of the respective owners with which they are associated.

Intel, Indeo, and Pentium are registered trademarks of Intel Corporation. Microsoft, Windows, Windows NT, Direct3D, DirectDraw, and DirectX are trademarks or registered trademarks of Microsoft Corporation. OpenGL is a registered trademark of Silicon Graphics Inc.

Other company and product names may be trademarks or registered trademarks of the respective owners with which they are associated.

Copyright

© 2004 by NVIDIA Corporation. All rights reserved.



Table of Contents



1.About NVIDIA RAID	1
System Requirements	2
Hardware Support	2
Operating System Support	2
RAID Arrays	2
RAID 0	3
RAID 1	4
RAID 0+1	5
Spanning (JBOD)	6
Summary of RAID Configurations	7
NVIDIA RAID Features	8
2.Setting Up Your RAID Configuration	9
Basic Configuration Instructions	9
Non-Bootable RAID Array	9
Bootable RAID Array	9
Setting Up a Non-Bootable NVRAID Array	10
Setup Used in This Section	10
Setting Up the BIOS	11
Configuring the NVRAID BIOS	13
Installing the NVIDIA RAID Software Under Windows	18
Setting Up a Bootable NVRAID Array	19
Setup Used in This Section	19
Setting Up the BIOS	20
Configuring the NVRAID BIOS	22
Installing the RAID Drivers	27
Initializing and Using the Disk Array	29
3.Managing Your RAID Drives	33
About the NV RAID Utility	33
Viewing RAID Array Configurations	34
Setting Up a Spare RAID Disk	37
Assigning a Free Disk	37
Assigning a Dedicated Disk	38
Rebuilding a RAID Mirrored Array	47
Rebuilding Instructions	47
More About Rebuilding Arrays	50
4.NVRAID Frequently Asked Questions	51
Basic RAID Questions	51
RAID ROM Setup Questions	52
Rebuilding Arrays Questions	53
Dedicated Disk Questions	53
Windows RAID Application	53



ABOUT NVIDIA RAID

NVIDIA brings Redundant Array of Independent Disks (RAID) technology—which is used by the world’s leading businesses—to the common PC desktop. This technology uses multiple drives to either increase total disk space or to offer data protection.

RAID techniques were first published in 1988 by a multivendor consortium—the RAID Advisory Board. RAID techniques were divided into different categories or levels. Originally, RAID levels focused on improving resiliency or data availability. As additional RAID levels were defined, one was introduced for improving performance. For all levels, RAID techniques optimize storage solutions by using multiple disks grouped together and treating them as a single storage resource.

This chapter describes NVRAID in the following sections:

- “System Requirements” on page 2.
- “RAID Arrays” on page 2 describes the RAID levels supported by NVRAID.
- “NVIDIA RAID Features” on page 8 describes additional features offered by NVRAID.

System Requirements

Hardware Support

NVRAID supports the following NVIDIA[®] nForce[™] versions:

- nForce[™]3 Pro250
- nForce3 250Gb
- nForce3 Ultra
- nForce3 250
- nForce3 150
- nForce2 MCP2S

Operating System Support

NVRAID supports the following operating systems:

- Windows[®] XP Home Edition
- Windows XP Professional Edition
- Windows 2000 Professional

RAID Arrays

This section describes the following types of RAID arrays that NVRAID supports:

- [RAID 0](#)
RAID 0 defines a disk striping scheme that improves the disk read and write times for many applications.
- [RAID 1](#)
RAID 1 defines techniques for mirroring data.
- [RAID 0+1](#)
RAID 0+1 combines the techniques used in RAID 0 and RAID 1 arrays.
- [Spanning \(JBOD\)](#)
JBOD provides a method for combining drives of different sizes into one large disk.

RAID 0

How RAID 0 Works

In a RAID 0 array, the controller “stripes” data across multiple drives in the RAID subsystem. RAID 0 breaks up a large file into smaller blocks and then performs disk reads and writes across multiple drives in parallel. The size of each block is determined by the stripe size parameter, which you set during the creation of the RAID set based on the system environment. This technique reduces overall disk access time and offers high bandwidth.

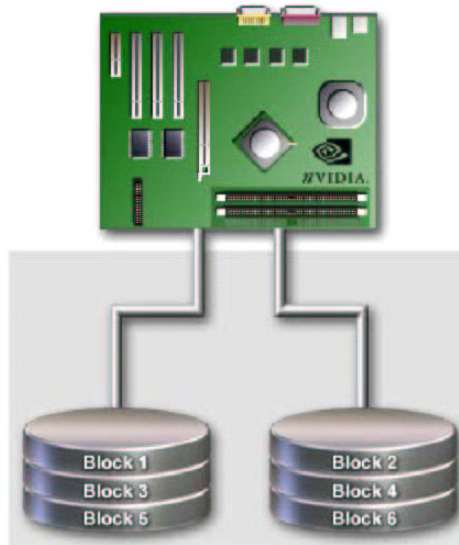


Figure 1.1 RAID 0 Array Diagram

RAID 0 involves no parity calculations to complicate the write operation. This makes RAID 0 ideal for applications that require high bandwidth but do not require fault tolerance. RAID 0 has the best performance and capacity of any RAID level, but the lowest availability (no fault tolerance). If one drive fails, the entire array fails because part of the data is missing with no way to recover it other than restoring from a backup.

Summary of Features and Benefits

- **Benefits:** Provides increased data throughput, especially for large files. No capacity loss penalty for parity.
- **Drawbacks:** Does not deliver any fault tolerance. If any drive in the array fails, all data is lost.
- **Uses:** Intended for non-critical data requiring high data throughput, or any environment that does not require fault tolerance.
- **Drives:** Minimum: 1. Maximum: Up to 6 or 8, depending on the platform.
- **Fault Tolerance:** No.

RAID 1

How RAID 1 Works

In a RAID 1 array, every read and write is actually carried out in parallel across two disk drives. The mirrored—or backup—copy of the data can reside on the same disk or on a second redundant drive in the array. RAID 1 provides a hot-standby copy of data if the active volume or drive is corrupted or becomes unavailable because of a hardware failure. RAID 1 techniques can be applied for high-availability solutions, or as a form of automatic backup that eliminates tedious manual backups to more expensive and less reliable media.

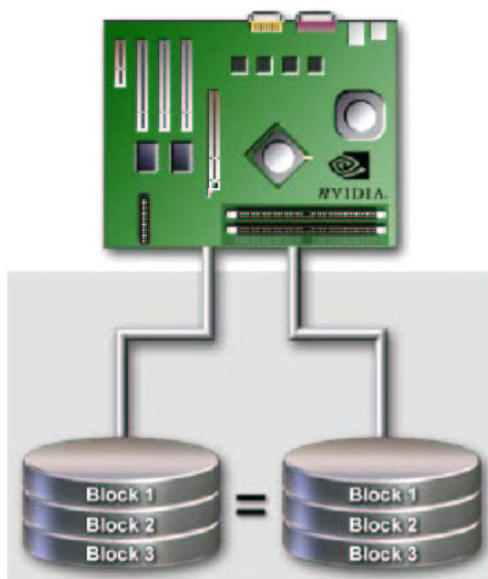


Figure 1.2 RAID 1 Array Diagram

RAID 1 provides complete data redundancy, but at the cost of doubling the required data storage capacity, resulting in 50% capacity utilization. Performance is roughly the same as for a single drive, although in some instances the dual write may be somewhat slower.

Summary of Features and Benefits

- **Benefits:** Provides 100% data redundancy. Should one drive fail, the controller switches to the other drive.
- **Drawbacks:** Requires two drives for the storage space of one drive. Performance is impaired during drive rebuilds.
- **Uses:** RAID 1 is ideal for small databases or any other application that requires fault tolerance and minimal capacity.
- **Drives:** Minimum, 2. Maximum, 2.
- **Fault Tolerance:** Yes

RAID 0+1

How RAID 0+1 Works

RAID 0 drives can be mirrored using RAID 1 techniques, resulting in a RAID 0+1 solution for improved performance plus resiliency.

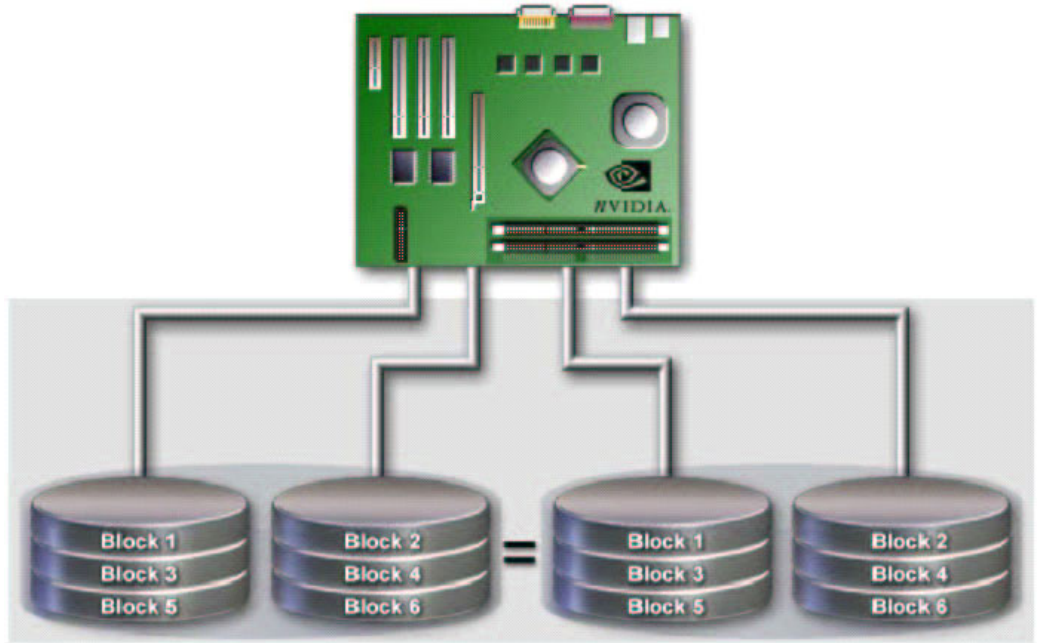


Figure 1.3 RAID 0+1 Array Diagram

The controller combines the performance of data striping (RAID 0) and the fault tolerance of disk mirroring (RAID 1). Data is striped across multiple drives and duplicated on another set of drives.

Summary of Features and Benefits

- **Benefits:** Optimizes for both fault tolerance and performance, allowing for automatic redundancy. May be simultaneously used with other RAID levels in an array, and allows for spare disks.
- **Drawbacks:** Requires twice the available disk space for data redundancy, the same as RAID level 1.
- **Drives:** Minimum: 4. Maximum: 6 or 8, depending on the platform.
- **Fault Tolerance:** Yes

Spanning (JBOD)

How JBOD Works

JBOD stands for “Just a Bunch of Disks”. Each drive is accessed as if it were on a standard SCSI host bus adapter. This is useful when a single drive configuration is needed, but it offers no speed improvement or fault tolerance.

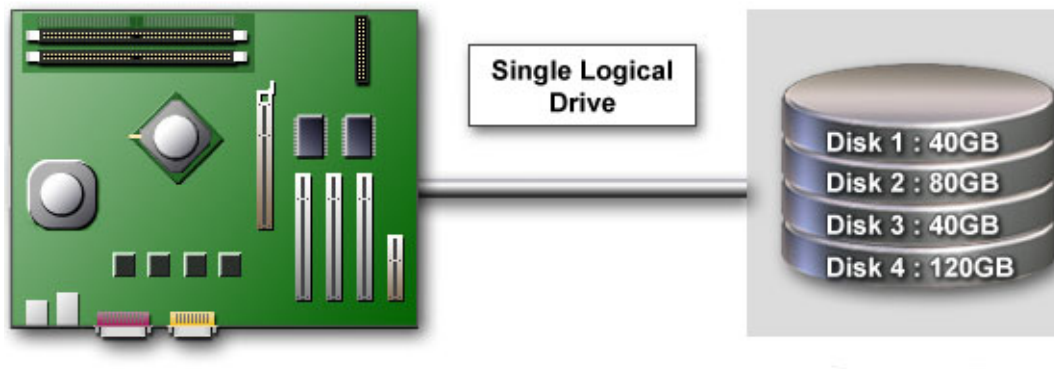


Figure 1.4 JBOD Array Diagram

Summary of Features and Benefits

- **Benefits:** JBOD provides the ability to combine odd size drives using all of the capacity of the drives.
- **Drawbacks:** Decreases performance because of the difficulty in using drives concurrently.
- **Uses:** JBOD works best if you have odd sized drives and you want to combine them to make one big drive.
- **Fault Tolerance:** No

Summary of RAID Configurations

Table 1.1 RAID Configuration Summary

Array	Uses	Advantages	Drawbacks	# Hard Disks	Fault Tolerance
RAID 0	Non-critical data requiring high performance.	High data throughput.	No fault tolerance.	multiple	None
RAID 1	Small databases or any other small capacity environment requiring fault tolerance.	100% data redundancy.	Requires two drives for the storage space of one drive.	2	Yes
RAID 0+1	Critical data requiring high performance.	Optimized for both 100% data redundancy and performance. Allows spare disks.	Requires two drives for the storage space of one drive—the same as RAID level 1.	4+	Yes
JBOD	Combining odd size drives into one big drive.	Combines and uses the capacity of odd size drives.	Decreases performance because of the difficulty in using drives concurrently or to optimize drives for different uses.	multiple	No

NVIDIA RAID Features

NVRAID offers the following additional features:

- **Free Disk and Dedicated Spare Disk**

A Free Disk or Dedicated Disk can be automatically used in case one drive of a mirrored array fails. A free disk can be used by any available mirrored array, while a dedicated disk can be used only by the array to which it is assigned.

- **RAID Across PATA and SATA**

NVRAID can span across both Parallel ATA as well as Serial ATA controllers. RAID operations can be performed on Parallel ATA hard drives, Serial ATA hard drives, or both Parallel and Serial ATA hard drives.

- **Bootable RAID**

NVRAID can be configured in a way to make it bootable. For example, two hard drives can be configured as a bootable mirrored RAID array.

- **RAID on Multiple Disk Controllers**

Unlike other RAID solutions that limits the user to a dedicated RAID controller, NVRAID software can use a drive on one RAID controller and another drive on a second RAID controller.

SETTING UP YOUR RAID CONFIGURATION

Basic Configuration Instructions

The following are the basic steps for configuring NVRAID:

Non-Bootable RAID Array

- 1 Choose the hard disks that are to be RAID enabled in the system BIOS.
- 2 Specify the RAID level, either Mirroring (RAID 1), Striping (RAID 0), Striping and Mirroring (RAID 0+1), or Spanning (JBOD) and create the desired RAID array.
- 3 Run the Windows nForce Setup application and install the RAID software.
- 4 Initialize the NVRAID Array Disks
See [“Initializing and Using the Disk Array” on page 29.](#)

Bootable RAID Array

- 1 Choose the hard disks that are to be RAID enabled in the system BIOS.
- 2 Specify the RAID level, either Mirroring (RAID 1), Striping (RAID 0), Striping and Mirroring (RAID 0+1), or Spanning (JBOD) and create the desired RAID array.
- 3 Boot from the Windows CD and install the nForce RAID software.
- 4 Initialize the NVRAID Array Disks
See [“Initializing and Using the Disk Array” on page 29.](#)

Setting Up a Non-Bootable NVRAID Array

Setup Used in This Section

This section assumes the following setup:

- **Boot Disk**

One hard disk connected to the Primary IDE channel, and set to Master or Slave.

- **RAID Array Disks**

- **RAID0**

Two hard disks connected to the secondary IDE channel, where one is set to Master and the other set to Slave.

This example shows how to enable RAID 0 on the two hard disks.

- **RAID1**

Two hard disks connected to the secondary IDE channel, where one is set to Master and the other set to Slave.

This example shows how to enable RAID 1 on the two hard disks.

- **JBOD/Spanning**

Two hard disks connected to the secondary IDE channel, where one is set to Master and the other set to Slave.

This example shows how to enable a JBOD/Spanning array on the two hard disks.

- **RAID0+1**

Two hard disks connected to the secondary IDE channel, where one is set to Master and the other set to Slave

Two SATA hard disks

Two hard disks will be used for striping and two hard disks will be used for mirroring.

Setting Up the BIOS

- 1 Start your computer, then press **Delete** to enter the BIOS setup.
The BIOS CMOS Setup Utility window appears.

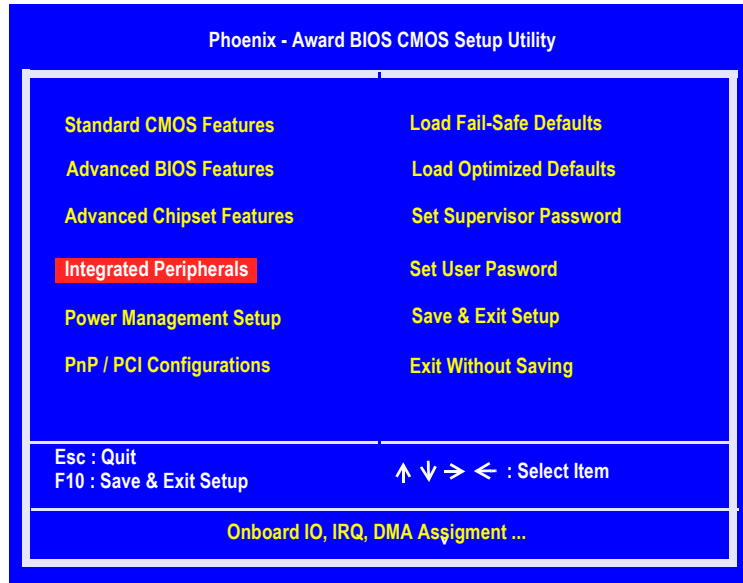


Figure 2.1 BIOS CMOS Setup Utility Main Window

- 2 Use the arrow keys to select **Integrated Peripherals** (see Figure 2.1), then press **Enter**.
The Integrated Peripherals window appears.

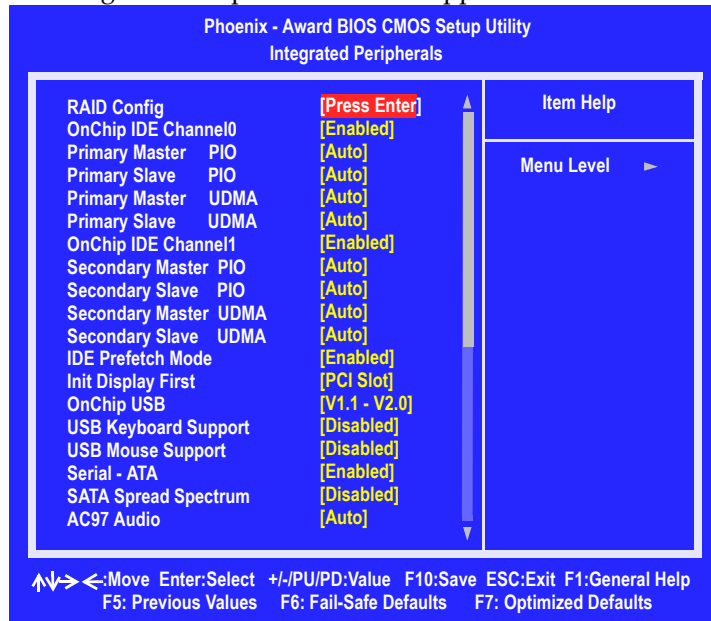


Figure 2.2 Integrated Peripherals Window

- 3 Use the arrow keys to select the RAID Config (see Figure 2.2), then press Enter. The RAID Config window appears..

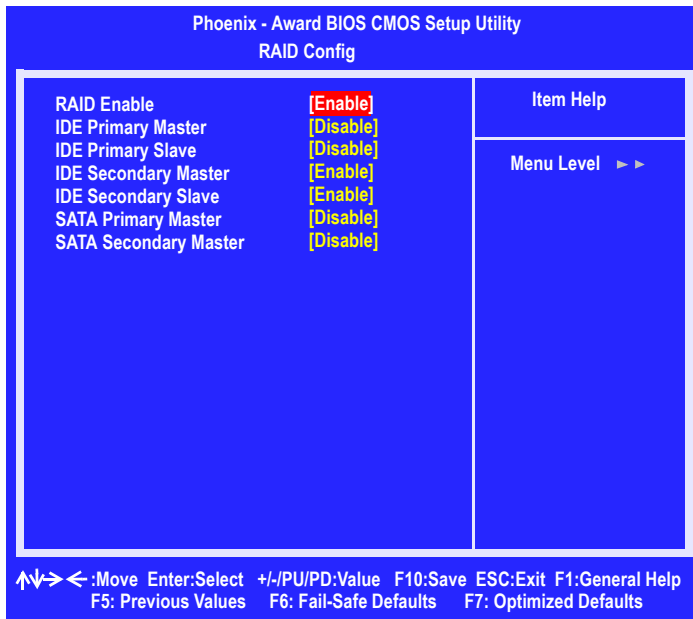


Figure 2.3 RAID Config Window

- 4 From the RAID Config window, enable RAID, then enable the disks that you want to use as RAID disks.
In Figure 2.3, the master and slave drives on the secondary IDE port are enabled as RAID disks.
Make sure to enable the SATA drives also if you are setting up a RAID0+1 array.
- 5 Press **F10** to save the configuration and exit.
The PC reboots.
- 6 Enter the RAID BIOS Setup by pressing **F10** when prompted, and proceed to set up the NVRAID BIOS as described in the next section.

Configuring the NVRAID BIOS

The NVRAID BIOS setup lets you choose the RAID array type and which hard drives you want to make part of the array.

Entering the RAID BIOS Setup

- 1 After rebooting your computer, wait until you see the RAID software prompting you to press **F10**.

The RAID prompt appears as part of the system POST and boot process prior to loading the OS. You have a few seconds to press **F10** before the window disappears.

- 2 Press **F10**.

The NVIDIA RAID Utility—**Define a New Array** window appears (Figure 2.4).

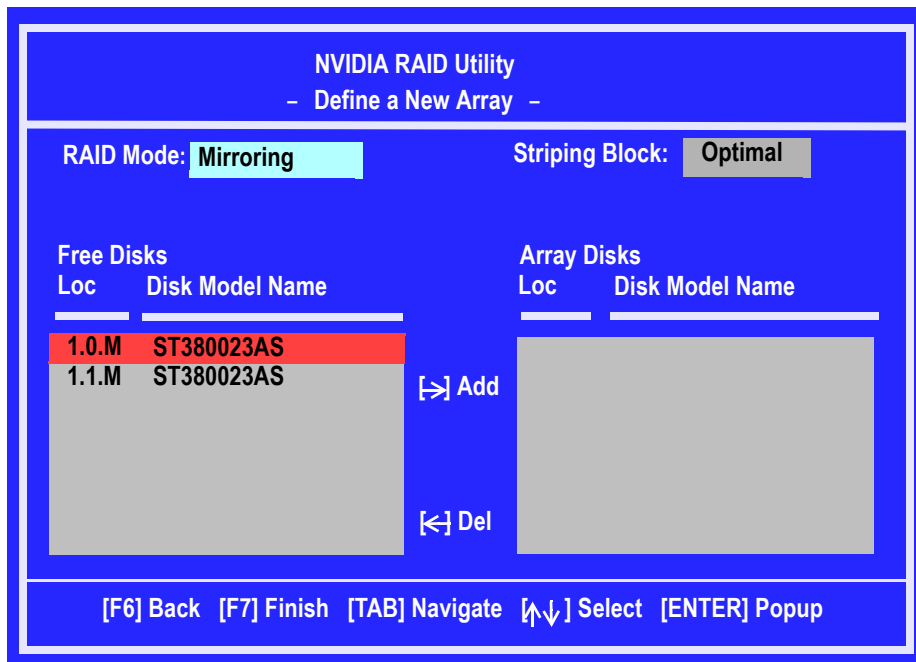


Figure 2.4 NVIDIA RAID Utility

By default, RAID Mode is set to Mirroring and Striping Block is set to Optimal.

Understanding the Define a New Array Window

Use the Define a New Array window to

- Select the RAID Mode
- Set up the Striping Block
- Specify which disks to use for the RAID Array

Depending on the platform used, the system can have one or more channels. In a typical system there is usually one controller and multiple channels, and each channel has a slave and a master.

The channel/controller/master/slave status of each hard disk is given in the Loc (location) columns of the Free Disks and Array Disks lists.

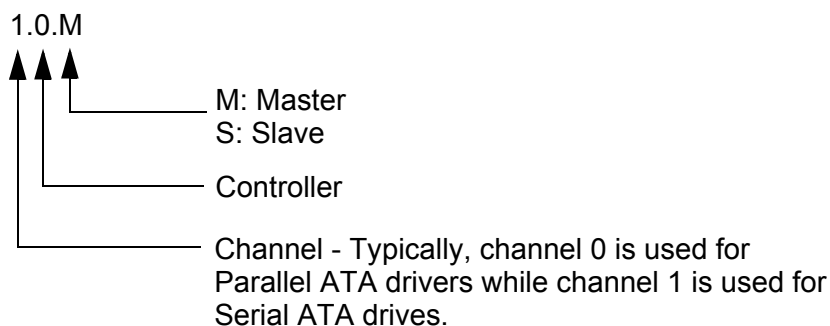


Figure 2.5 Loc Column Information

In [Figure 2.4](#), 1.0.M means the hard drive is attached to Channel 1, Controller 0, and the drive is set to Master. The following is a list of all possible combinations:

Parallel ATA	
0.0.M	Channel 0, controller 0, Master
0.0.S	Channel 0, controller 0, Slave
0.1.M	Channel 0, controller 1, Master
0.1.S	Channel 0, controller 1, Slave
Serial ATA	
1.0.M	Channel 1, controller 0, Master
1.1.M	Channel 1, controller 1, Slave

Note: There is no such thing as Slave drive in Serial ATA. All drives are considered to be Master since there is a one to one connection between the drive and the controller.

Using the Define a New Array Window

If necessary, press the tab key to move from field to field until the appropriate field is highlighted.

- **Selecting the RAID Mode**

By default, this is set to Mirroring. To change to a different RAID mode, press the down arrow key until the mode that you want appears in the RAID Mode box—either Mirroring, Striping, Spanning, or Stripe Mirroring.

- **Selecting the Striping Block Size**

Striping block size is given in kilobytes, and affects how data is arranged on the disk. It is recommended to leave this value at the default Optimal, which is 32KB, but the values can be between 4 KB and 128 KB.

- **Assigning the Disks**

The disks that you enabled from the RAID Config BIOS setup page appear in the Free Disks block. These are the drives that are available for use as RAID array disks.

To designate a free disk to be used as a RAID array disk,

- 1 Tab to the Free Disks section.

The first disk in the list is selected

- 2 Move it from the Free Disks block to the Array Disks block by pressing the right-arrow key (→).

The first disk in the list is moved, and the next disk in the list is selected and ready to be moved.

- 3 Continue pressing the right-arrow key (→) until all the disks that you want to use as RAID array disks appear in the Array Disks block.

Figure 2.6 illustrates the Define a New Array window after two disks have been assigned as RAID1 array disks.

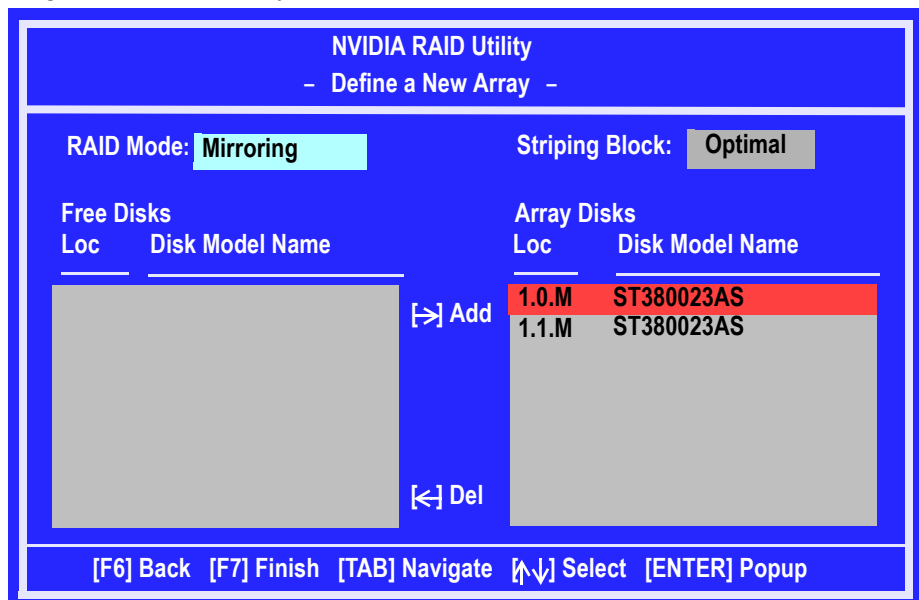


Figure 2.6 NVIDIA RAID Utility—Array Disks Assigned

Completing the RAID BIOS Setup

- 3 After assigning your RAID array disks, press **F7**.

The Clear disk data prompt appears.

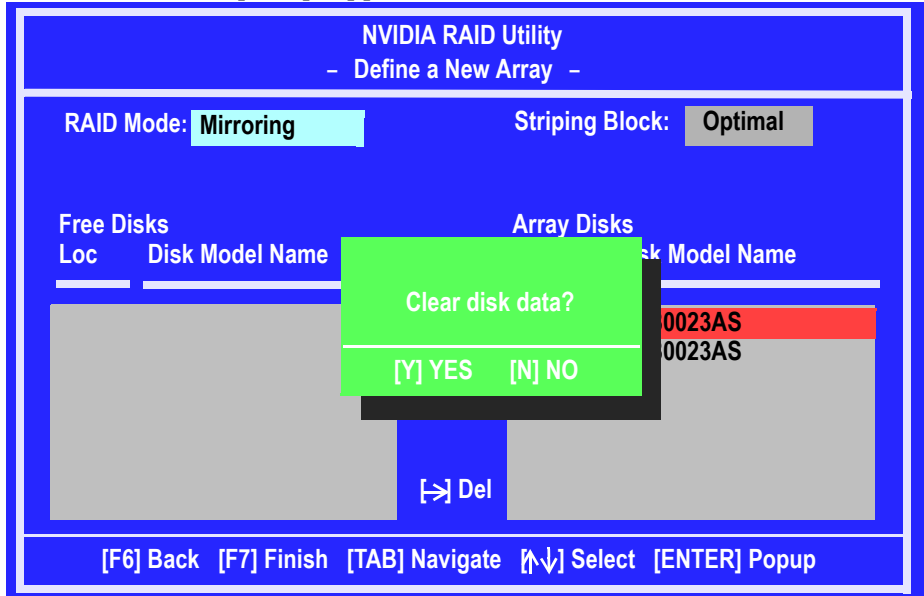


Figure 2.7 Clear Disk Data Prompt

- 4 Press **Y** if you want to wipe out all the data from the RAID array, otherwise press **N**.

You must choose **Yes** if the drives were previously used as RAID drives.

The **Array List** window appears, where you can review the RAID arrays that you have set up.

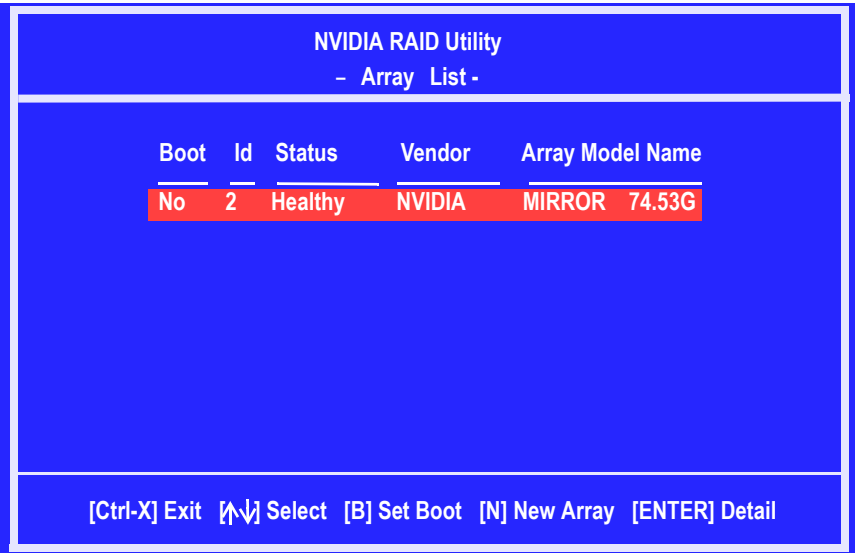


Figure 2.8 Array List Window

- 5** Use the arrow keys to select the array that you want to set up, then press **Enter**.
The **Array Detail** window appears.

Array 2 : NVIDIA MIRROR 74.56G - Array Detail -					
RAID Mode: Mirroring Striping Width : 1			Striping Block 32K		
Adapt	Channel	M/S	Index	Disk Model Name	Capacity
1	0	Master	0	ST380023AS	74.56GB
1	1	Master	1	ST380023AS	74.56GB
[R] Rebuild [D] Delete [C] Clear Disk [Enter] Return					

Figure 2.9 Array Detail Window

The Array Detail window shows information about the array that you selected, such as Striping Block used, RAID Mode, Striping Width, Disk Model Name, and disk capacity.

- 6** If you want to mark this disk as empty and wipe out all its contents then press **C**.
7 At the prompt, press **Y** to wipe out all the data, otherwise press **N**.
8 Press **Enter** again to go back to the previous window and then press **F10** to exit the RAID setup.

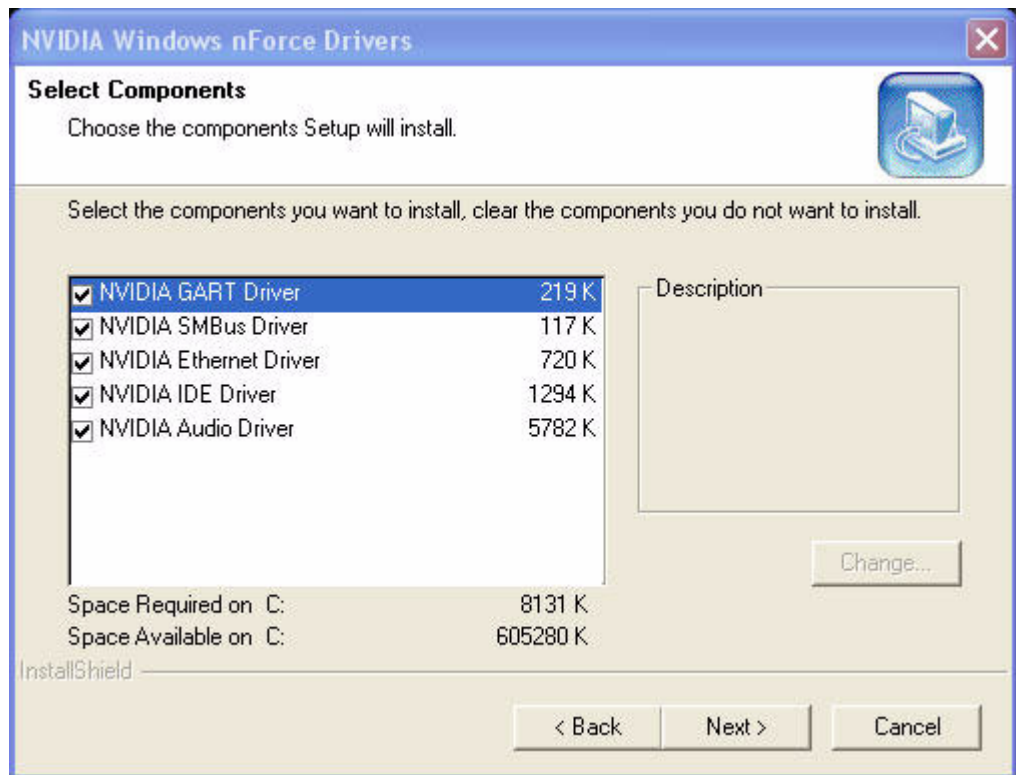
Now that the RAID setup has been configured from the RAID BIOS, the next step is to configure and load NVRAID drivers under Windows, as explained in [“Installing the NVIDIA RAID Software Under Windows”](#) on page 18.

Installing the NVIDIA RAID Software Under Windows

The existing Windows IDE Parallel ATA driver (as well as the Serial ATA driver if SATA is enabled) must be upgraded to use the NVIDIA IDE Parallel ATA driver (as well as the NV Serial ATA driver if SATA is enabled).

This section describes how to run the setup application and install the RAID software which will upgrade the Windows IDE driver and install the RAID software.

- 1 Start the nForce Setup program to open the NVIDIA Windows nForce Drivers page.



- 2 Select the modules that you want to install.
Make sure that the “NVIDIA IDE Driver” is selected.
- 3 Click **Next** and then follow the instructions.
- 4 After the installation is completed, be sure to reboot the PC.
- 5 After the reboot, initialize the newly created array.
See “[Initializing and Using the Disk Array](#)” on page 29.

Setting Up a Bootable NVRAID Array

This section explains how to configure a bootable NVIDIA RAID array.

Setup Used in This Section

This section assumes the following setup:

- **Boot Disk**

An IDE CD-ROM is connected to the Primary IDE channel, and set to Master or Slave. Make sure to have a bootable Windows XP CD inserted into the CD-ROM so you can boot from it.

- **RAID Array Disks**

- **RAID0**

Two hard disks connected to the secondary IDE channel, where one is set to Master and the other set to Slave.

A fresh copy of Windows XP will be installed on the 2 striped hard disks.

- **RAID1**

Two hard disks connected to the secondary IDE channel, where one is set to Master and the other set to Slave.

A fresh copy of Windows XP will be installed on the 2 mirrored hard disks.

- **RAID0+1**

Two hard disks connected to the secondary IDE channel, where one is set to Master and the other set to Slave

Two SATA hard disks

A fresh copy of Windows XP will be installed on the mirrored-striped hard disks.

Setting Up the BIOS

- 1 Start your computer, then press **Delete** to enter the BIOS setup.
The BIOS CMOS Setup Utility screen appears.

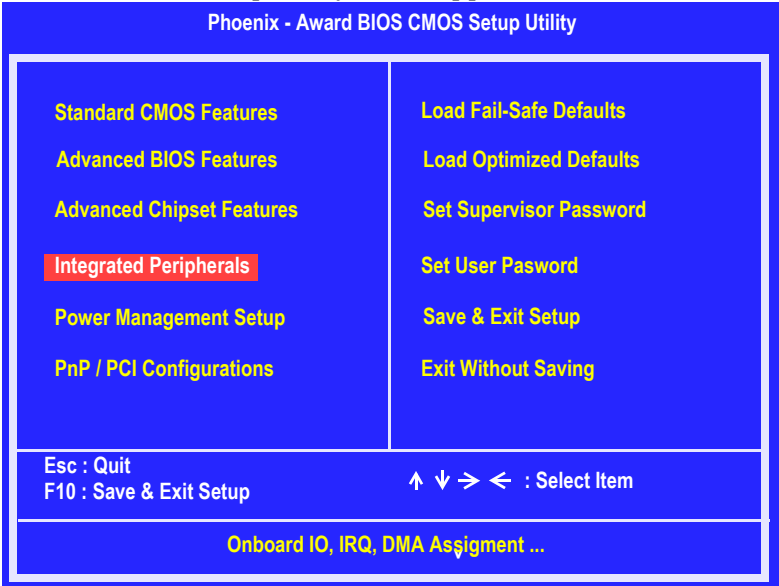


Figure 2.10 BIOS CMOS Setup Utility Main Screen

- 2 Use the arrow keys to select **Integrated Peripherals** (see Figure 2.10), then press Enter.
The Integrated Peripherals screen appears.

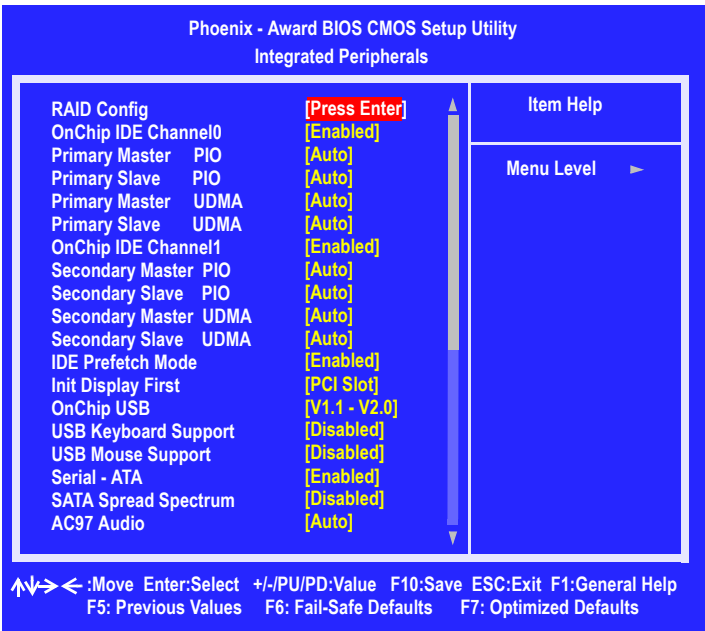


Figure 2.11 Integrated Peripherals Screen

- 3 Use the arrow keys to select the RAID Config (see Figure 2.11).
- 4 Press Enter.
The RAID Config screen appears.

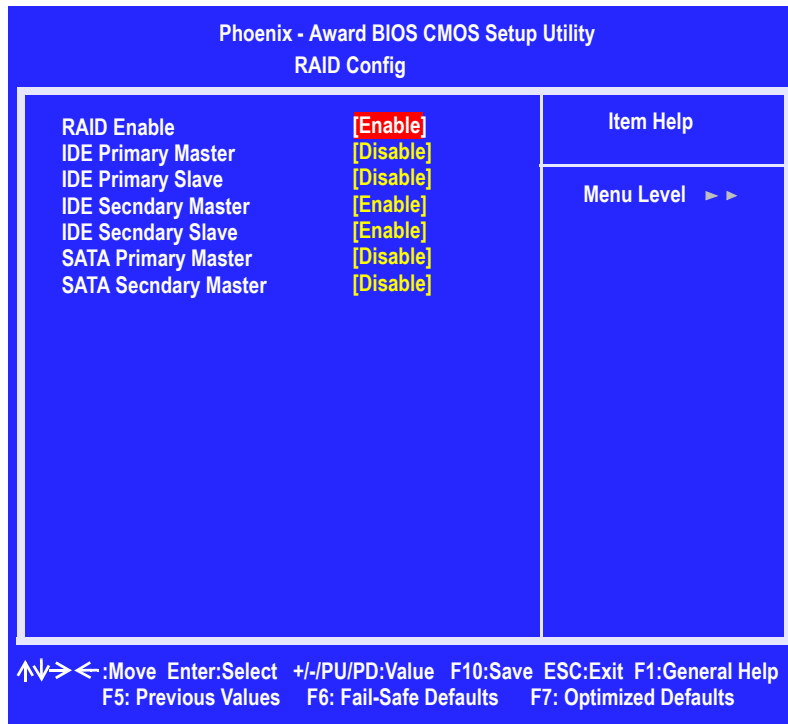


Figure 2.12 RAID Config Screen

- 5 From the RAID Config screen, enable RAID, then enable any of the disks that you want to use as RAID disks.
In Figure 2.12, the master and slave drives on the secondary IDE port are enabled as RAID disks.
Make sure to enable the SATA drives also if you are setting up a RAID0+1 array.
- 6 Press **F10** to save the configuration and exit.
The PC reboots.
- 7 Enter the RAID BIOS Setup by pressing **F10** when prompted, and proceed to set up the NVRAID BIOS as described in the next section.

Configuring the NVRAID BIOS

The NVRAID BIOS set up lets you choose the RAID type and which hard drives you want to make part of the array.

Entering the RAID BIOS Setup:

- 1 Wait until you see the RAID software prompting you to press **F10**.

The RAID prompt appears as part of the system POST and boot process prior to loading of the OS. You have a few seconds to press **F10** before the screen disappears.

- 2 Press **F10**.

The NVIDIA RAID Utility—**Define a New Array** screen appears (Figure 2.13).

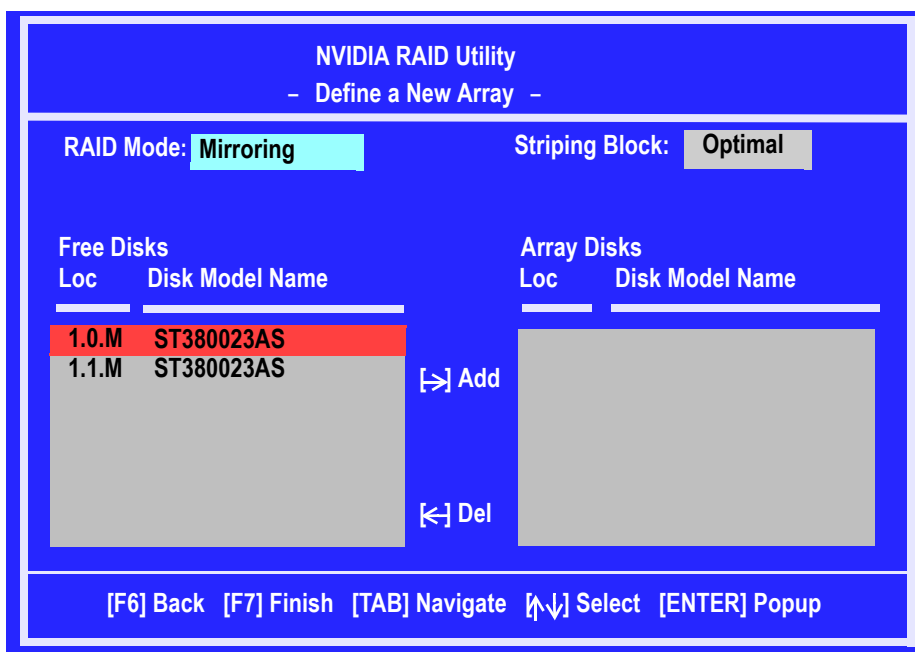


Figure 2.13 NVIDIA RAID Utility

By default, RAID Mode is set to Mirroring and Striping Block is set to Optimal.

Understanding the Define a New Array Window

Use the Define a New Array window to

- Select the RAID Mode
- Set up the Striping Block
- Specify which disks to use for the RAID Array

Depending on the platform used, the system can have one or more channels. In a typical system there is usually one controller and multiple channels, and each channel has a slave and a master.

The channel/controller/master/slave status of each hard disk is given in the Loc (location) columns of the Free Disks and Array Disks lists.

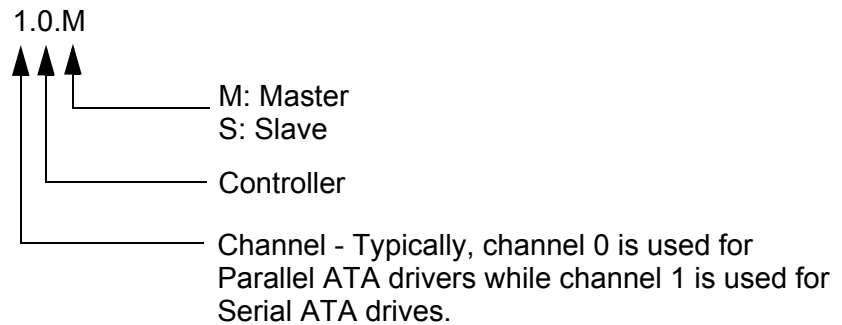


Figure 2.14 Loc Column Information

In [Figure 2.4](#), 1.0.M means the hard drive is attached to Channel 1, Controller 0, and the drive is set to Master. The following is a list of all possible combinations:

Parallel ATA	
0.0.M	Channel 0, controller 0, Master
0.0.S	Channel 0, controller 0, Slave
0.1.M	Channel 0, controller 1, Master
0.1.S	Channel 0, controller 1, Slave
Serial ATA	
1.0.M	Channel 1, controller 0, Master
1.1.M	Channel 1, controller 1, Slave

Note: There is no such thing as Slave drive in Serial ATA. All drives are considered to be Master since there is a one to one connection between the drive and the controller.

Using the Define a New Array Screen

If necessary, press the tab key to move from field to field until the appropriate field is highlighted.

- **Selecting the RAID Mode**

By default, this is set to Mirroring. To change to a different RAID mode, press the down arrow key until the mode that you want appears in the RAID Mode box—either Mirroring, Striping, Spanning, or Stripe Mirroring.

- **Selecting the Striping Block Size**

Striping block size is given in kilobytes, and affects how data is arranged on the disk. It is recommended to leave this value at the default Optimal, which is 32KB, but the values can be between 4 KB and 128 KB.

Assigning the Disks

The disks that you enabled from the RAID Config BIOS setup page appear in the Free Disks block. These are the drives that are available for use as RAID array disks.

To designate a free disk to be used as a RAID array disk,

- 1 Tab to the Free Disks section.

The first disk in the list is selected

- 2 Move it from the Free Disks block to the Array Disks block by pressing the right-arrow key (→).

The first disk in the list is moved, and the next disk in the list is selected and ready to be moved.

- 3 Continue pressing the right-arrow key (→) until all the disks that you want to use as RAID array disks appear in the Array Disks block.

Figure 2.15 illustrates the Define a New Array screen after two disks have been assigned as RAID1 array disks.

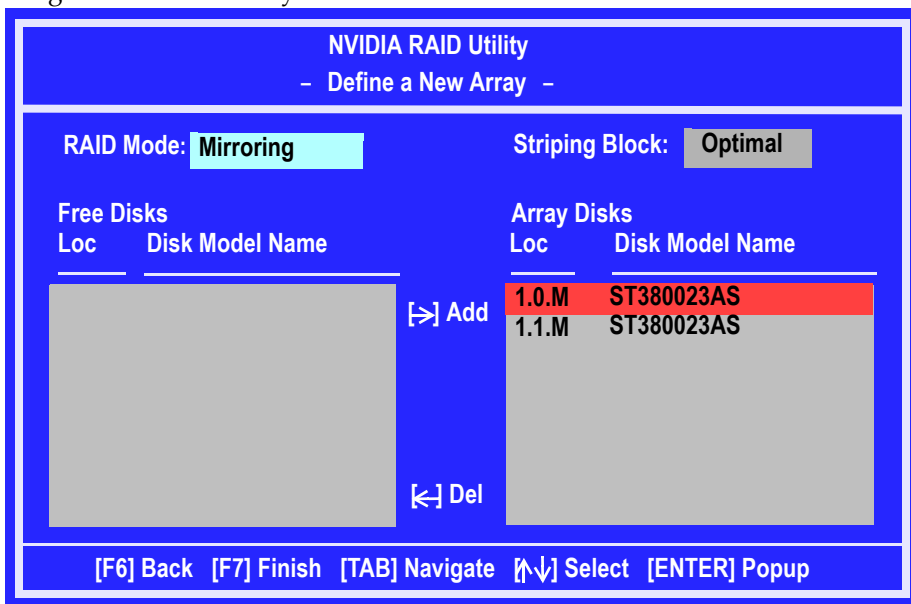


Figure 2.15 NVIDIA RAID Utility—Array Disks Assigned

Completing the RAID BIOS Setup

- 3 After assigning your RAID array disks, press **F7**.
The Clear disk array prompt appears.

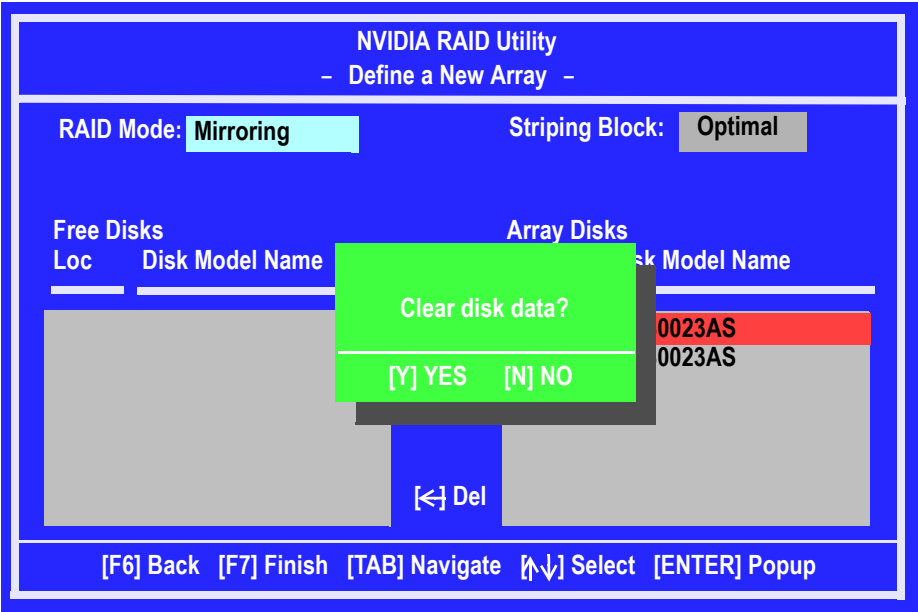


Figure 2.16 Clear Disk Data Prompt

- 4 Press **Y** if you want to wipe out all the data from the RAID array, otherwise press **N**.
The **Array List** screen appears, where you can review the RAID arrays that you have set up.
- 5 Use the arrow keys to select the array that you want to set up, then press **B** to specify the array as bootable.

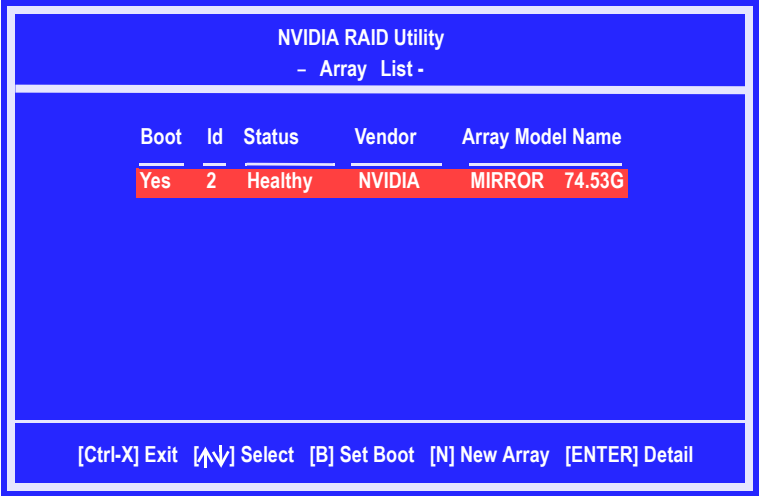


Figure 2.17 Array List Screen

- 6 Press **Enter** to view and verify details.
The **Array Detail** screen appears.

Array 2 : NVIDIA MIRROR 74.56G - Array Detail -					
RAID Mode: Mirroring Striping Width : 1			Striping Block 32K		
Adapt	Channel	M/S	Index	Disk Model Name	Capacity
1	0	Master	0	ST380023AS	74.56GB
1	1	Master	1	ST380023AS	74.56GB
[R] Rebuild [D] Delete [C] Clear Disk [Enter] Return					

Figure 2.18 Array Detail Screen

The Array Detail screen shows various information about the array that you selected, such as Striping Block used, RAID Mode, Striping Width, Disk Model Name, and disk capacity.

- 7 If you want to mark this disk as empty and wipe out all its contents, press **C**.
- 8 At the prompt, press **Y** to wipe out all the data, otherwise press **N**.
- 9 Press **Enter** again to go back to the previous screen and then press **F10** to exit the RAID setup.

Installing the RAID Drivers

- 1 After you complete the RAID BIOS setup, boot from the Windows CD.
The Windows Setup program starts.
- 2 Press **F6** and wait a few moments for the Windows Setup screen to appear.

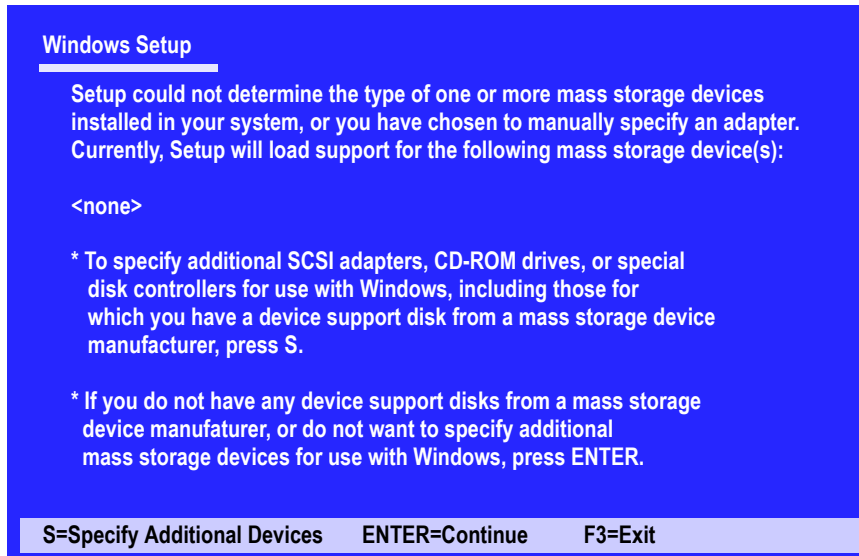


Figure 2.19 Windows Setup—Specify Devices

- 3 Specify the NVIDIA drivers.
 - 1 Insert the floppy that has the RAID driver, press **S**, then press Enter.
The following Windows Setup screen appears::

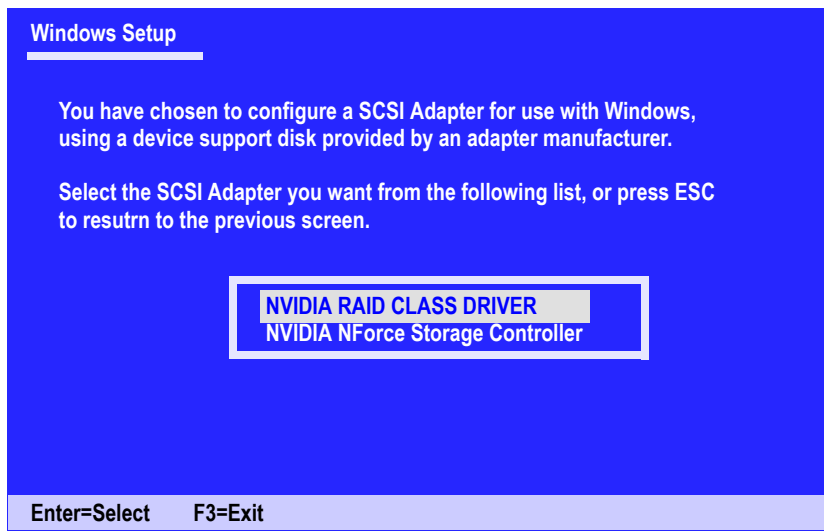


Figure 2.20 Windows Setup—Select SCSI Adapter

- 2 Select “NVIDIA RAID CLASS DRIVER” and then press **Enter**.
- 3 Press **S** again at the Specify Devices screen, then press **Enter**.
- 4 Select “NVIDIA NForce Storage Controller” and then press **Enter**.

The following Windows Setup screen appears listing both drivers:

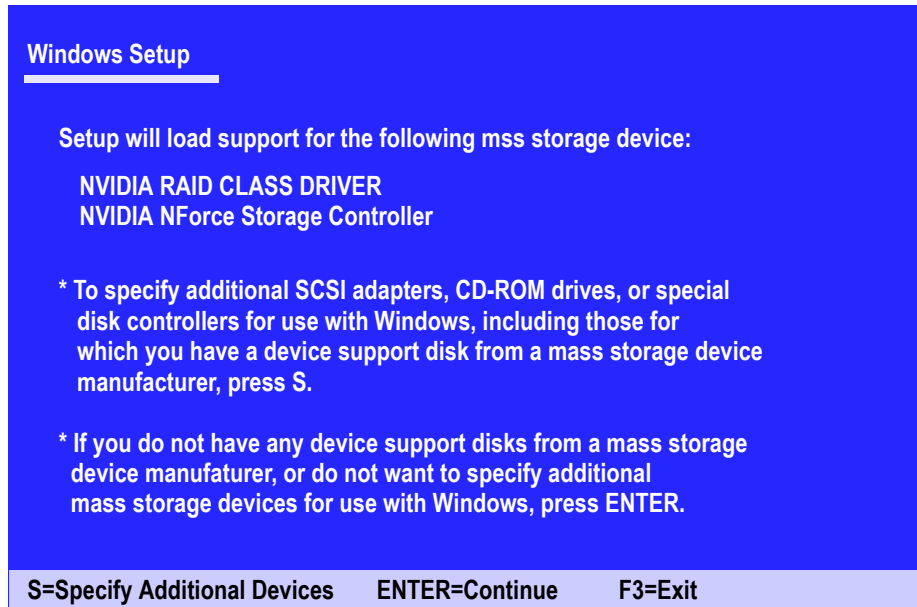


Figure 2.21 Windows Setup—NVIDIA drivers listed

- 4 Press **Enter** to continue with Windows XP Installation.
Be sure to leave the floppy disk inserted in the floppy drive until the blue screen portion of Windows XP installation is completed, then take out the floppy.
 - 5 Follow the instructions on how to install Windows XP.
During the GUI portion of the install you might be prompted to click **Yes** to install the RAID driver. Click **Yes** as many times as needed in order to finish the installation. This will not be an issue with a signed driver.
- Note:** Each time you add a new hard drive to a RAID array, the RAID driver will have to be installed under Windows once for that hard drive. After that, the driver will not have to be installed.

Initializing and Using the Disk Array

The RAID array is now ready to be initialized under Windows.

- 1 Launch Computer Management by clicking Start → Settings → Control Panel then open the Administrative Tools folder and double click on Computer Management.
- 2 Click Disk Management (under the Storage section).

The Initialize and Convert Disk Wizards appears.



Figure 2.22 Initialize and Convett Wizard

- 3 Click Next.

The Select Disks to Initialize window appears.

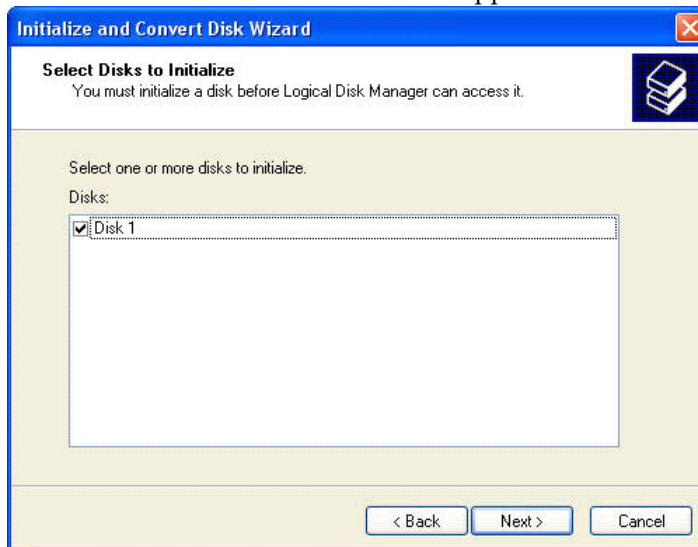


Figure 2.23 Select Disks to Initialize Page

The disks listed depend on how many arrays you have configured

4 Click Next.

The Select Disks to Convert window appears.

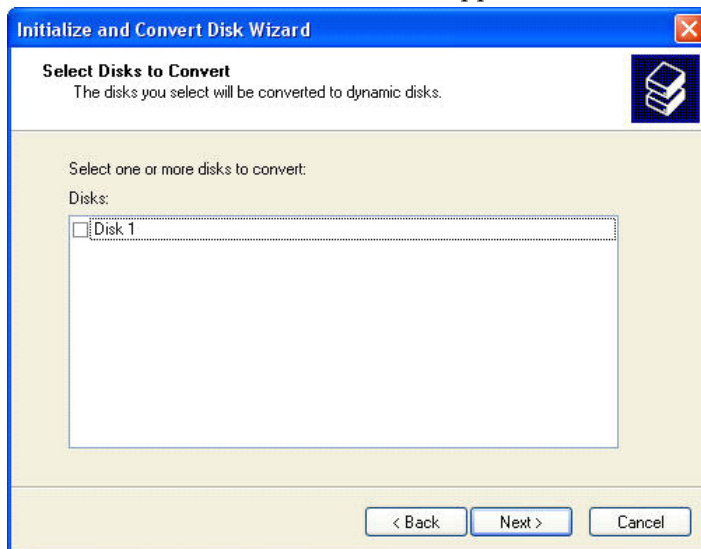


Figure 2.24 Select Disks to Convert Page

5 Check the disk in the list if you want to make the array a dynamic disk, then click Next.

The Completing the Initialize and Convert Disk Wizard window appears.

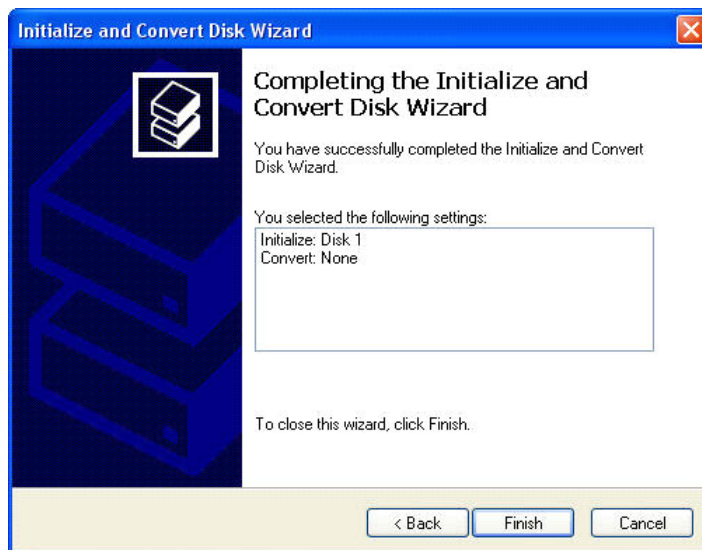


Figure 2.25 Completing the Initialize and Convert Disk Wizard Page

6 Click Finish.

The Computer Management window appears.

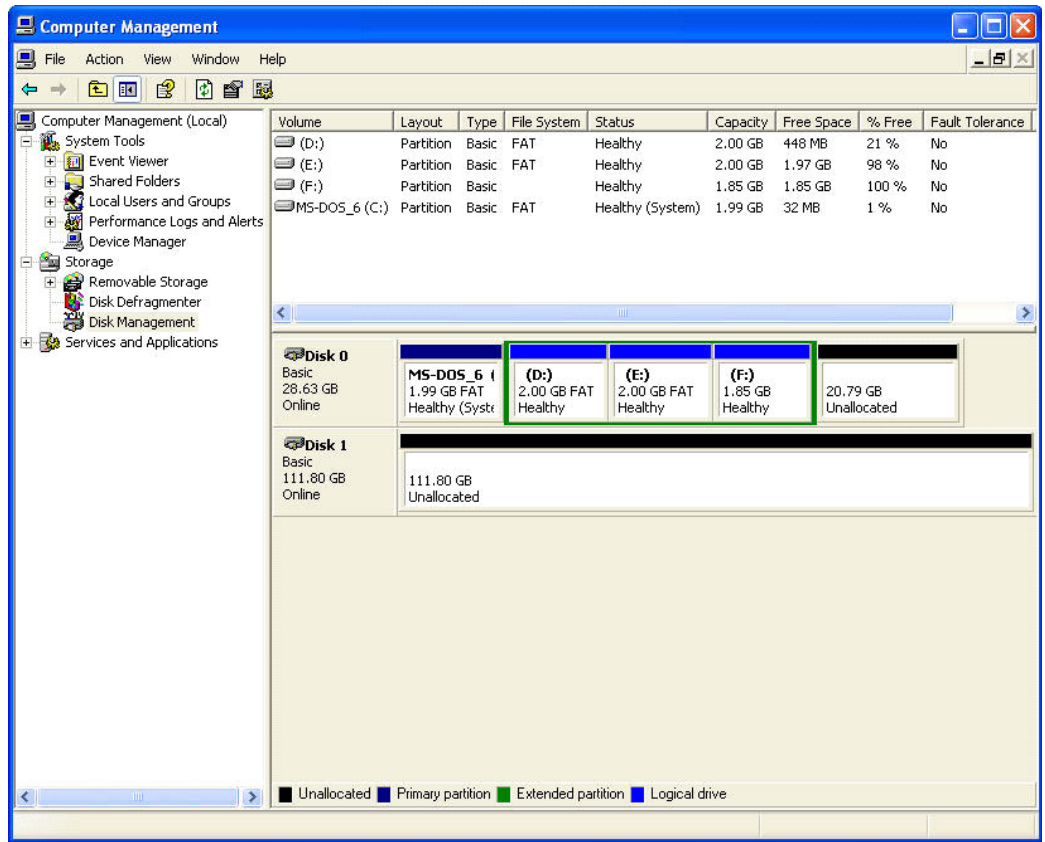


Figure 2.26 Computer Management Window

The actual disks listed will depend on your system. In [Figure 2.26](#), there is a 111 GB unallocated partition (which is the total combined storage of two 60 GB HD). You must format the unallocated disk space in order to use it.

7 Format the unallocated disk space.

Right click “Unallocated space”, select “New Partition...” and follow the wizard. After the drive has been formatted, it is ready for use.

MANAGING YOUR RAID DRIVES

About the NVRAID Utility

The NVRAID software ships with an application called NVRAIDMAN. With this application you can perform the following tasks:

- [Viewing RAID Array Configurations](#)
View an array configuration (mirrored, striped, mirror-striped, JBOD, or any supported combination)
- [Setting Up a Spare RAID Disk](#)
 - View free and/or dedicated free disks
 - Designate a free disk to a particular array
- [Rebuilding a RAID Mirrored Array](#)
 - Rebuild a broken mirrored array
 - Watch the progress of rebuilding of an array

Viewing RAID Array Configurations

To view your RAID configuration from Windows, launch the NVRAID Management utility by double-clicking `NvRaidMan.exe`.

The RAID configuration information appears in the right-side pane, as shown in [Figure 3.1](#).

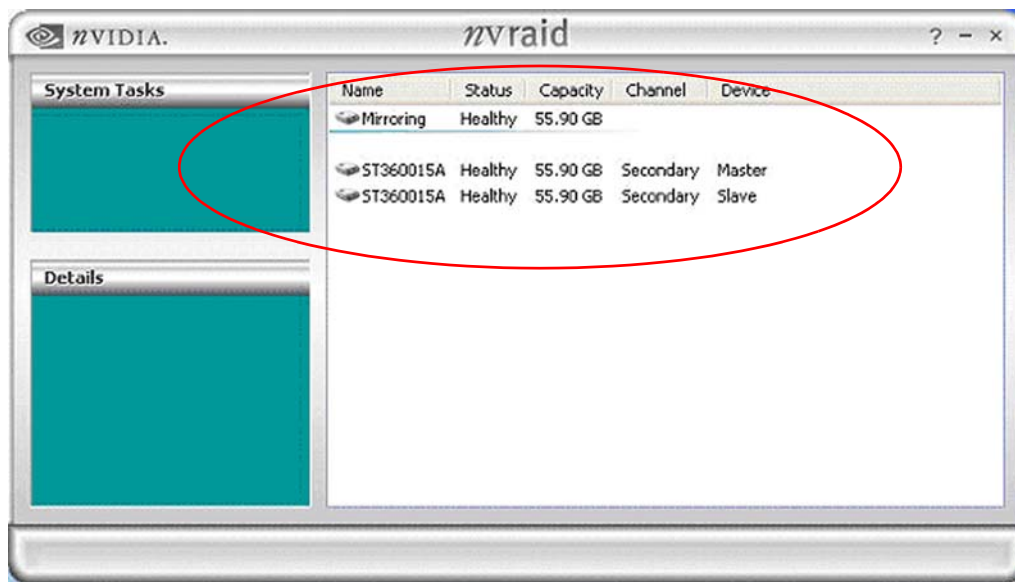


Figure 3.1 NVRAID Management Utility Window

The following are examples of the information displayed for the various RAID levels. While the details of your own configuration will likely vary from what is shown, the examples serve to illustrate the basic differences between the RAID levels.

NVRAID Mirrored Array

[Figure 3.2](#) shows an example of a two hard drive mirrored array using identical 55.90 GB¹ IDE hard drives (ST360015A), where one drive is configured as Master and the other drive is configured as Slave. The total hard disk space used is 55.90 GB.

Name	Status	Capacity	Channel	Device
Mirroring	Healthy	55.90 GB		
ST360015A	Healthy	55.90 GB	Secondary	Master
ST360015A	Healthy	55.90 GB	Secondary	Slave

Figure 3.2 NVRAIDMAN Mirrored Array Information

1. 1 GB = 1,073,741,824 bytes

NVRAID Striped Array

Figure 3.3 shows an example of a two hard drive striped array using identical 55.90 GB IDE hard drives (ST360015A), where one drive is configured as Master and the other drive is configured as Slave. The total disk space used is 111.80 GB.

Name	Status	Capacity	Channel	Device
Striping	Healthy	111.80 GB		
ST360015A	Healthy	55.90 GB	Secondary	Master
ST360015A	Healthy	55.90 GB	Secondary	Slave

Figure 3.3 NVRAIDMAN Striped Array Information

NVRAID Striped Mirror Array

Figure 3.4 shows an example of a four hard drive stripe-mirrored array. The total disk space used is 111.80 GB.

Name	Status	Capacity	Channel	Device
Stripe Mirroring	Healthy	111.80 GB		
ST360015A	Healthy	55.90 GB	Secondary	Master
ST360015A	Healthy	55.90 GB	Secondary	Slave
ST380023AS	Healthy	74.53 GB	Primary	Master
ST380023AS	Healthy	74.53 GB	Secondary	Master

Figure 3.4 NVRAIDMAN Stripe Mirroring Array Information

NVRAID Spanning (JBOD) Array

Figure 3.5 shows an example of a two hard drive spanning array. The total disk space used is 111.80 GB.

Name	Status	Capacity	Channel	Device
Spanning	Healthy	111.80 GB		
ST360015A	Healthy	55.90 GB	Secondary	Master
ST360015A	Healthy	55.90 GB	Secondary	Slave

Figure 3.5 NVRAIDMAN Spanning Array Information

NVRAID Mirrored Array and a Striped Array

Figure 3.6 shows an example of a two hard drive mirrored array as well as a two hard drive striped array.



Figure 3.6 NVRAIDMAN Mirrored Array and Striped Array Information

Setting Up a Spare RAID Disk

You can designate a hard drive to be used as a spare drive for a RAID 1 or RAID 0+1 array². The spare drive can take over for a failed disk. NVRAID supports two types of spare drives:

- **Free Disk**

A free disk is a disk that is not part of any RAID array, but can be used by any available RAID 1 or RAID 0+1 array that requires a particular disk when one of its disks crashes or becomes unusable. The process is automatic and doesn't require any user interaction.

For example, if you have a system with four hard disks where one disk is used to boot the OS, two hard drives are set up in a mirrored array, and a fourth hard disk is set up as a free disk, then if one of the mirrored array drives fails, the free disk will be automatically assigned to the mirrored array to be used instead of the failed disk.

- **Dedicated Disk**

A dedicated free disk is a disk that is assigned to a RAID 1 or RAID 0+1 array and that disk is used by that array only when needed, for example during a system crash where a RAID mirrored drive is broken. The dedicated disk can be used only by the array that it is assigned to and not by any other array, unlike a free disk which can be used by any available RAID 1 or RAID 0+1 array.

Assigning a Free Disk

To mark a disk as free, or not a part of any array,

- 1 Enter the system BIOS setup and make sure that the drive that you want to mark as free is RAID enabled.
- 2 Enter the RAID BIOS and make sure that the drive is not part of any array (if one exists).
- 3 Boot into Windows and run the NVRAIDMAN program.

The drive appears under the Free Disk section.

[Figure 3.7](#) shows an example of the NVRAIDMAN display if you have a mirror array and one free disk.

2. Spare disks cannot be used for RAID0 or JBOD arrays.



Figure 3.7 NVRAIDMAN Free Disk Information

Assigning a Dedicated Disk

To mark a disk as dedicated, or reserve it for use by a specific array,

Step 1: Mark the Disk as a Free Disk

- 1 Enter the system BIOS setup and make sure that the drive that you want to mark as free is RAID enabled.
- 2 Enter the RAID BIOS and make sure that the drive is not part of any array (if one exists).
- 3 Boot into Windows and run the NVRAIDMAN program.
The drive appears under the Free Disk section.

Step 2: Dedicate the Free Disk to an Array

While running NVRAIDMAN, dedicate the free disk to an array using one of the following two methods:

- Method 1: Select a free disk and then assign it to an array.
- Method 2: Select an array and then assign a free disk to it.

Both methods are equally simple ways of accomplishing the same task.

Method 1: Select a free disk and then assign it to an array.

- 1 Right click one of the available disks under the Free Disk section.
The pop-up menu appears.

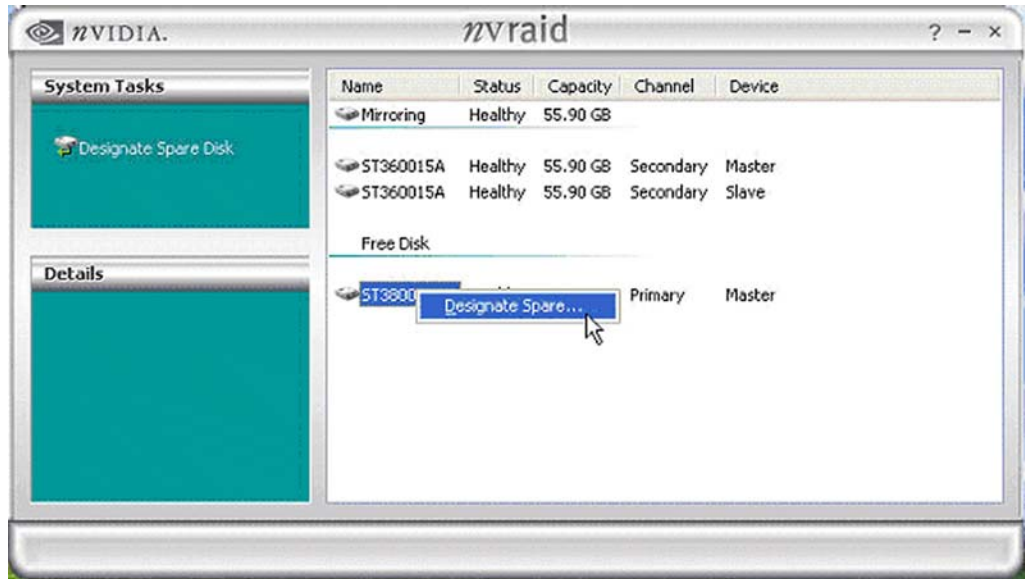


Figure 3.8 Free Disk Pop-up Menu

- 2 Select **Designate Spare** from the menu to launch the Spare Disk Allocation Wizard.



Figure 3.9 Spare Disk Allocation Wizard

3 Click **Next**.

The RAID Array Selection page appears.

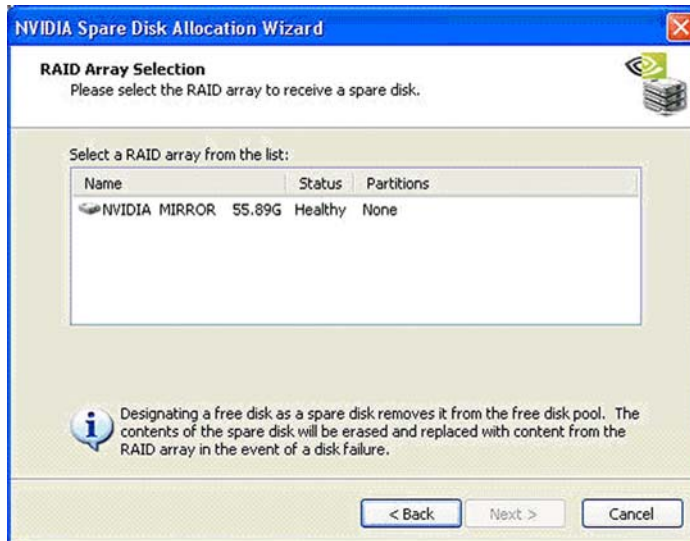


Figure 3.10 RAID Array Selection Page

4 From the RAID Array Selection page, select one of the arrays from the list.

This is the array to which you want to allocate the dedicated free disk.

Note: In [Figure 3.10](#) there is only one array created on the system.

5 Click **Next**.

The Completing the NVIDIA Spare Disk Allocation page appears.



Figure 3.11 Completing Spare Disk Allocation Wizard Page

6 Click Finish.

As shown in [Figure 3.12](#), the ST380023AS drive is now a dedicated free disk in the mirrored array. If a system crash occurs that causes any of the two ST360015A drives to fail, the ST380023AS hard drive will take over and be used in the newly formed mirrored array.

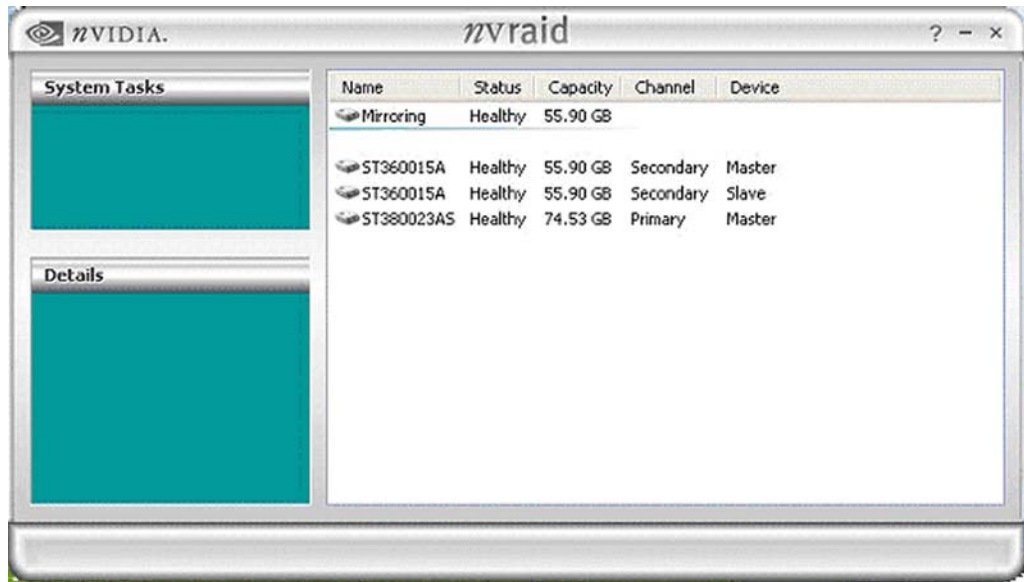


Figure 3.12 Designated Spare Disk

Once a dedicated disk has been assigned to a particular array, it can be removed at any time. To remove the disk, right click on the dedicated disk and select the option to remove it.

Method 2: Select an array and then assign a free disk to it.

- 1 Right click on the array to which you want to assign a dedicated free disk.
The pop-up menu appears.



Figure 3.13 Array Pop-up Menu

- 2 Select **Designate Spare** from the menu to launch the Spare Disk Allocation Wizard.



Figure 3.14 Spare Disk Allocation Wizard

- 3 Click **Next**.

The Free Disk Selection page appears.

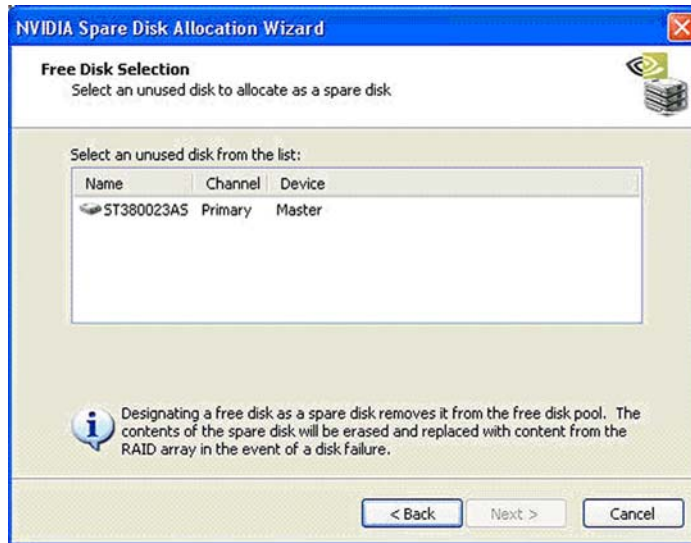


Figure 3.15 Free Disk Selection Page

- 4 From the Free Disk Selection page, select one of the disks from the list.

Note: There can be more than one disk to choose from.

- 5 Click **Next**.

The Completing the NVIDIA Spare Disk Allocation page appears.



Figure 3.16 Completing the Spare Disk Allocation Wizard Page

- 6 Click **Finish**.

You have now assigned a dedicated free disk to a mirrored array.



Once a dedicated disk has been assigned to a particular array, it can be removed at any time. To remove the disk, right click on the dedicated disk and select the option to remove it.

Example of Dedicating a Free Disk in a RAID 1 or RAID 0+1 Array

You can also assign a dedicated free disk to a RAID 1 or a RAID 0+1 array, using the same process.

- 1 Right-click either the free disk that you want to dedicate to an array, the array type, or the array drives as shown in [Figure 3.17](#), [Figure 3.18](#), and [Figure 3.19](#). then click Designate Spare to launch the Spare Disk Allocation Wizard.



Figure 3.17 Right-clicking the Array Type

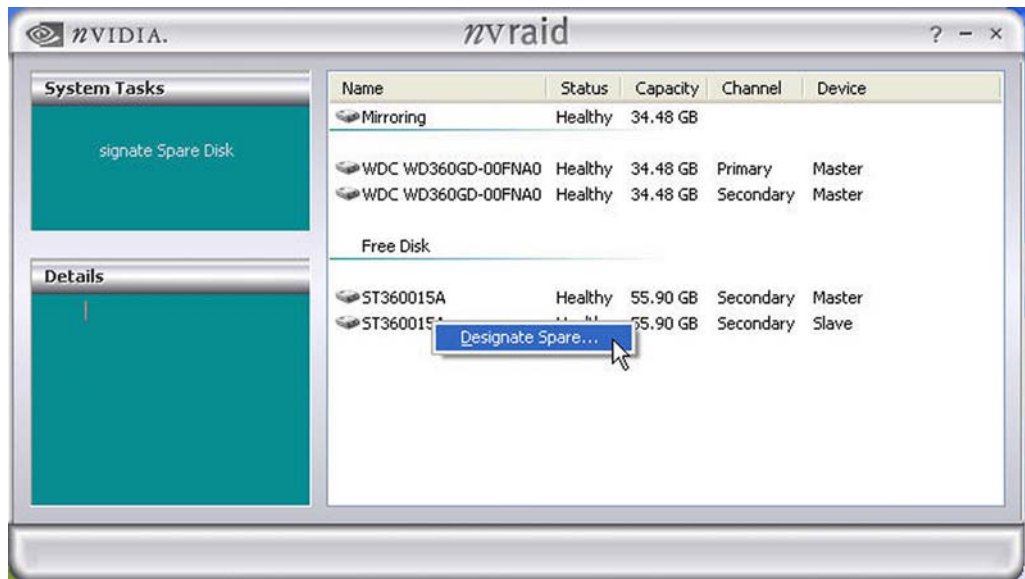


Figure 3.18 Right-clicking the Free Disk



Figure 3.19 Right-clicking the RAID Drives

2 Click **Designate Spare** and then follow the instructions in the Wizard.
Figure 3.20 shows an example of a RAID 1 array that has one spare disk dedicated to it.



Figure 3.20 NVRAIDMAN RAID 1 Spare Disk Information

Once a dedicated disk has been assigned to a particular array, it can be removed at any time. To remove the disk, right click on the dedicated disk and select the option to remove it.

Rebuilding a RAID Mirrored Array

Rebuilding is the process of recovering data from one hard drive to another. All data is copied from one hard drive to another and then the data is synchronized between the two hard drives. This only applies to RAID 1 array as well as a RAID 0+1 array.

Rebuilding Instructions

After creating a mirrored array, you can rebuild the array using the following steps:

- 1 Go to Windows and run the NVRAID Management utility.

Figure 3.21 shows an example of a system with one mirrored array.



Figure 3.21 Mirrored Array

- 2 Right-click on Mirroring.
The popup menu appears.

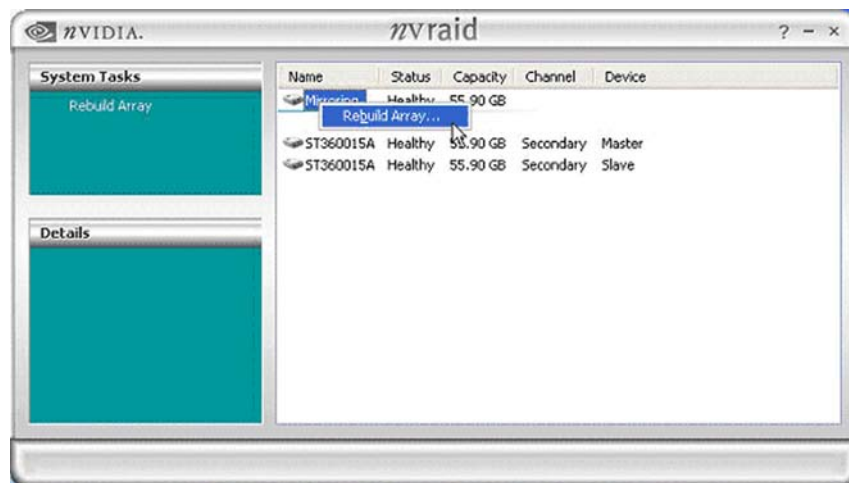


Figure 3.22 Array Pop-up Menu

- 3 From the popup menu, click **Rebuild Array**.
The NVIDIA Rebuild Array Wizard appears.



Figure 3.23 NVIDIA Rebuild Array Wizard

- 4 Click **Next**.
The Disk Selection page appears.

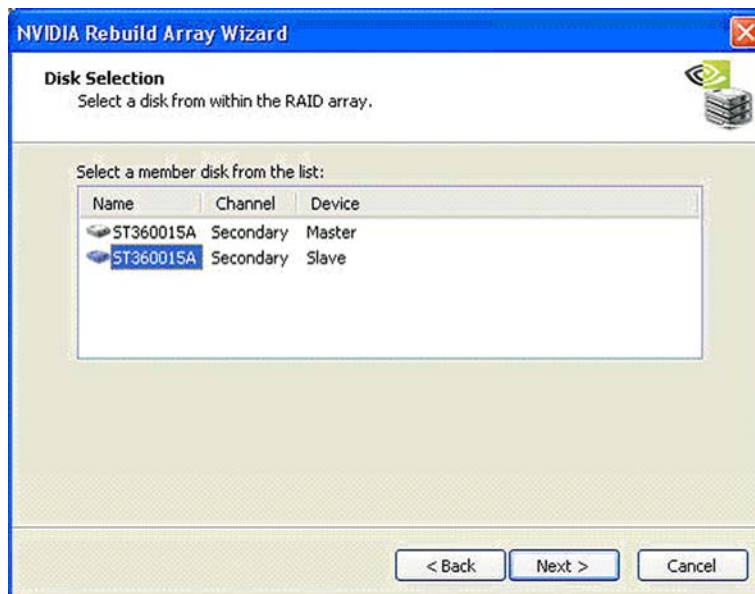


Figure 3.24 Disk Selection Page

- 5 Select the drive that you want to rebuild by clicking it from the list, then click **Next**. The Completing the NVIDIA Rebuild Array page appears.

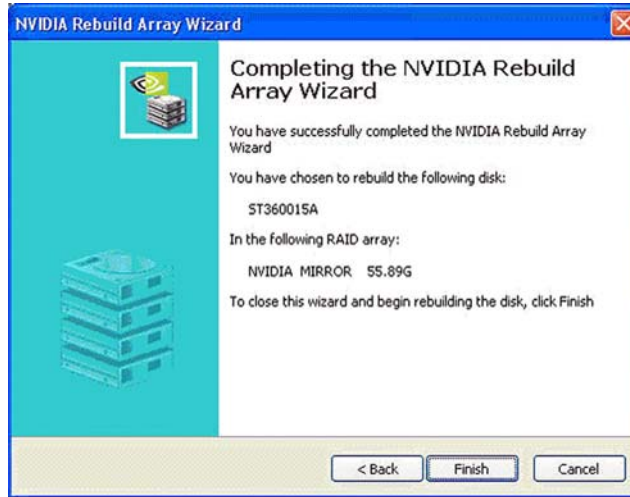


Figure 3.25 Completing the NVIDIA Rebuild Array Wizard Page

- 6 Click **Finish**.

The array rebuilding starts after a few seconds, and a small pop-up message appears towards the bottom right corner of the screen as shown in [Figure 3.26](#).



Figure 3.26 Rebuild Bubble Message

During the rebuilding process, the NVRAID Management utility screen shows the status under the System Tasks and Details sections.

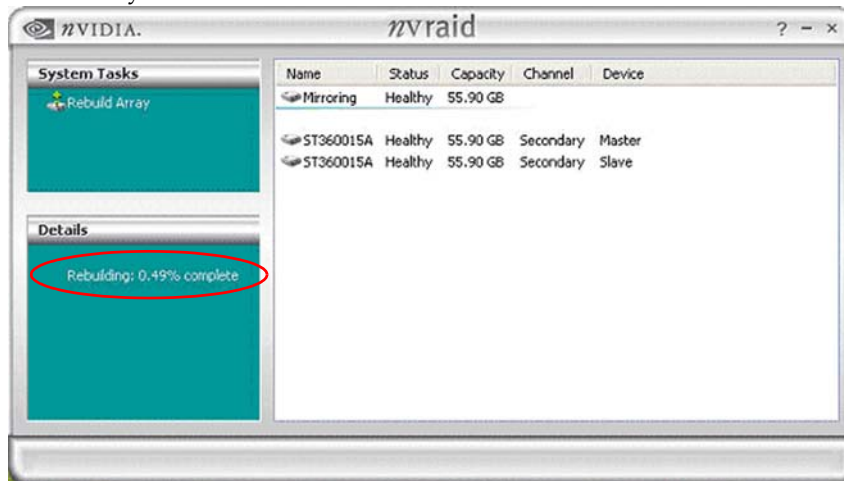


Figure 3.27 Array Rebuilding Status Detail

More About Rebuilding Arrays

- **Rebuilding Occurs in the Background**

The rebuilding process is very slow (it can take up to a day) and occurs in the background so as not to affect the performance of the system.

- **Rebuilding Applies Only to RAID 1 or RAID 0+1 Arrays**

Rebuilding an array works only when using RAID1 and/or RAID 0+1. Rebuilding does not apply to RAID 0 and JBOD arrays.

- **You Can Use Any Available Free Disk**

You can rebuild a mirrored array using any available Free Disk or Dedicated Disk.

For example, [Figure 3.28](#) shows a mirrored array using 34.48 GB HD while having two Free Disks each 55.90 GB large.

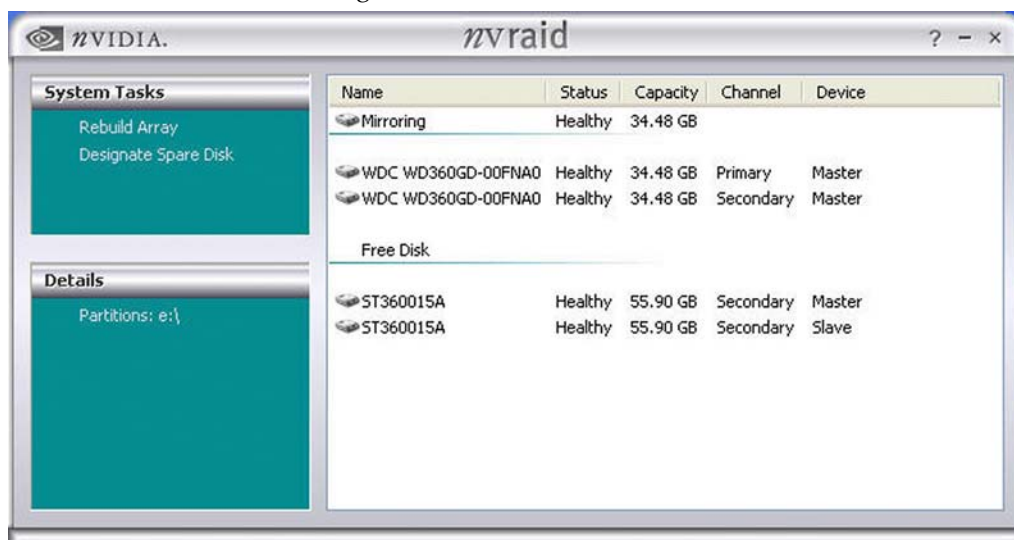


Figure 3.28 Free Disks Available for Rebuilding

To use one of these available free disks to rebuild your array, follow the same steps as explained in [“Rebuilding a RAID Mirrored Array” on page 47](#), except when prompted to select a disk, choose one of the two available free disks.

NVRAID FREQUENTLY ASKED QUESTIONS

Basic RAID Questions

- *What is RAID?*

RAID stands for *Redundant Array of Independent Disks*, and refers to the grouping of 2 or more disk drives that the system views as a single drive. Different groupings have different advantages that include better performance and data fault tolerance.

See [“About NVIDIA RAID” on page 1](#) for detailed descriptions of the different types of RAID arrays.

- *What type of RAID array is right for me?*

In general, for better throughput of non-critical data, use RAID 0; for fault tolerance, use RAID1, and for better throughput as well as fault tolerance use RAID 0+1.

See [“About NVIDIA RAID” on page 1](#) for detailed descriptions of the different types of RAID arrays.

- *What is the difference between a bootable and a non-bootable RAID array?*

A system with a non-bootable RAID array includes a separate hard disk that contains the OS and is not part of the RAID array.

See [“Non-Bootable RAID Array” on page 9](#) for more information.

In a bootable RAID array, the OS is installed on the RAID array disks.

See [“Bootable RAID Array” on page 9](#) for more information.

- *I just configured a RAID 1 array—why is the array size one-half the total cumulative size of the drives?*

RAID 1 uses one-half the total disk space for data redundancy.

See [“RAID 1” on page 4](#) for more information on RAID1 arrays.

- ***What is the optimal hard drive configuration for RAID 1 (mirror)?***

In a mirrored array, a mirror is created using the maximum drive size of the smaller of the two drives. Ideal configuration is achieved using drives of identical size.

- ***How do I configure a multiple array system?***

Two different arrays can be configured and active at the same time. For example, a mirrored array with two hard drives, as well as a striped array using three hard drives can exist at the same time. You need to configure each array separately in the RAID BIOS as well as initialize the arrays in Windows as described in [“Setting Up Your RAID Configuration” on page 9](#).

- ***Why is the cumulative size of a RAID 0 (Stripe) or RAID 0+1 (Stripe-Mirror) not equal to the sum of the drives?***

The drive size is controlled by stripe blocks. If you have mis-matched drive sizes, the size of the array is approximately the size of the smaller drive multiplied by two. This is done because there must be corresponding data locations between the drives in the array. Any space beyond the corresponding points is not usable.

- ***Why can I not get into Windows after adding a non-bootable array?***

Possible cause would be adding the boot drive to the array and then clearing the array.

RAID ROM Setup Questions

- ***Why can I not get into the RAID ROM Setup?***

You must enable RAID functionality in the system BIOS as explained in [“Setting Up the BIOS” on page 11](#).

- ***Why do my hard drives not appear in the RAID ROM Setup?***

From the **RAID Config** window, you must enable RAID and then enable the disks that you want to use as RAID disks. See [“Setting Up the BIOS” on page 11](#) for more information.

- ***What is the Optimal Block Size in the RAID ROM Setup?***

The default optimal block size is 32KB. NVIDIA recommends using the optimal block size.

- ***What does BBS stand for in the RAID ROM [F10] setup?***

BBS stands for *BIOS Boot Specification*. This indicates that the boot device is defined in the BIOS.

- ***What does “Clear Disk” mean in the RAID ROM Setup?***

Clear Disk clears the MBR (Master Boot Record). This is needed to prevent invalid data from appearing in the MBR space on any of the drives included in the array. Not doing so could render the system unstable.

Rebuilding Arrays Questions

- *Why does the RAID rebuilding process take so long to complete?*

In the rebuilding process, all data is copied from one hard drive to another and then the data is synchronized between the two hard drives. Because the rebuilding process occurs in the background in a way that does not affect system performance, the process can be very slow—taking up to a day or more to complete.

See “Rebuilding a RAID Mirrored Array” on page 47 for more information.

Dedicated Disk Questions

- *Can I assign a dedicated disk to a striped array/JBOD or use a free disk with striped array/JBOD?*

No, free disks and dedicated disks can be only used with a mirrored array or a striped-mirrored array.

- *Once a dedicated disk has been assigned to a RAID1 or RAID0+1 array can I remove it?*

Yes, a dedicated disk can be removed from a RAID1 or a RAID 0+1 array.

Windows RAID Application

- *What functions can be performed using the NVRAIDMAN application?*

The following tasks can be performed:

- View information about RAID0, 1, 0+1 and JBOD (as well as any supported configuration if you have more than one RAID array active)
- Assigning a dedicated disk to RAID 1 and RAID 0+1
- Removing a dedicated disk from a RAID 1 or RAID 0+1 array
- Viewing Free Disks
- Rebuilding a RAID 1 and RAID 0+1
- Viewing the status of the rebuilding process

