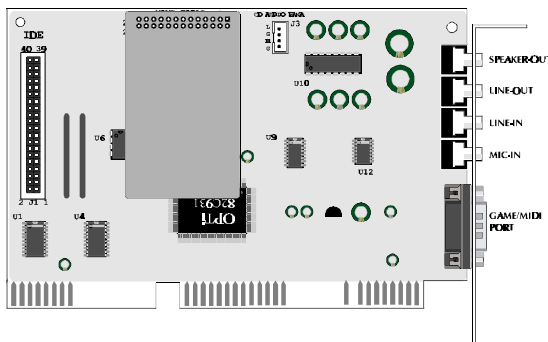
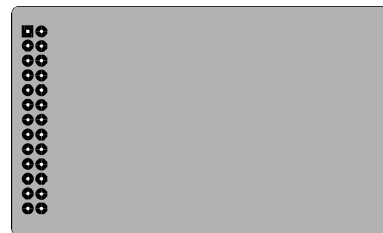
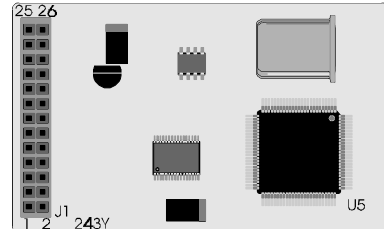


# HOT-243Y (Wave Table Daughter Board) User's Guide

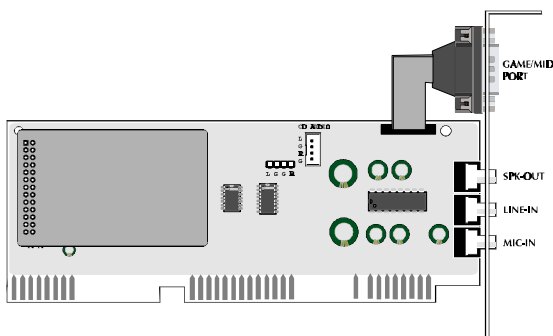
## Specification :

- ⚙ *Complies with GM system Level 1.*
- ⚙ *Compatible with MPU-401.*
- ⚙ *Contains 1Mega byte wave table ROM*
- ⚙ *Wave table synthesis is able to generate up to 24 voices simultaneously.*
- ⚙ *Compatible with HOT-241 & HOT-245A PnP sound card*
- ⚙ *Compact size: 62.2 mm X 38.0 mm*



## Using on HOT-241

- 1 Locate the Wave Table 26-pin header (J2) on the HOT-241 PnP Sound card.
- 2 Locate the 26-pin header socket (J1) on the HOT-243Y.
- 3 Connect the 26-pin header socket (J1) on the HOT-243Y face to face against to the 26-pin header on the HOT-241.
- 4 No hardware jumpers setup are required.
- 5 Turn on the MPU-401 function in the setup program to enable HOT-243Y.



## Using on HOT-245A

- 1 Locate the Wave Table 26-pin header (J2) on the HOT-245A PnP Sound card.
- 2 Locate the 26-pin header socket (J1) on the HOT-243Y.
- 3 Connect the 26-pin header socket (J1) on the HOT-243Y face to face against to the 26-pin header on the HOT-245A.
- 4 No hardware jumpers setup are required.
- 5 Turn on the MPU-401 function on the setup program to enable HOT-243Y.