

RAID Administrator

User's Manual

TABLE OF CONTENTS

Chapter 1

Getting Started	3
1-1 Introduction	3
1-2 Main Features & Benefits	3

Chapter 2

Installation of Driver	4
2-1 Windows 98/ME	4
2-2 Windows NT4.0	6
2-3 Windows 2000	7
2-4 Windows XP	9

Chapter 3

Use RAID Administrator	12
3-1 Install RAID Administrator	13
3-2 Run RAID Administrator	13
3-3 Create Stripe Array	15
3-4 Create Mirror Array	17
3-5 Add/Remove Spare Disk	18
3-6 Synchronize/Validate/Verify Mirror Array	19
3-7 Create Span Array	21
3-8 Create 0+1 Array	22
3-9 Remove Disk Array	23
3-10 Set Transfer Mode	24
3-11 Device Status	25
3-12 Hot-swapping Hard Disks of Mirror Array	26
3-13 Event Log	27

Chapter 4

BIOS Configuration	28
4-1 Enter into BIOS Configuration Utility	29
4-2 Create RAID	30
4-3 Delete RAID	31
4-4 Rebuild Mirror Array	31
4-5 Add Spare Disk	32
4-6 Remove Spare Disk	32
4-7 Set Disk Mode	32
4-8 Set Boot Disk	33

GETTING STARTED

1.1 Introduction

1.2 Main Features & Benefits

1.1 Introduction

HPT372 is UDMA/ATA133 RAID controller.
RAID Administrator is a Windows-based RAID management utility for HPT372 RAID Controller. With graphical user interface, RAID Administrator enable users easily configure and manage disk and disk arrays connected to HPT372 RAID controller.

1.2 Main Features & Benefits

Below are the main features and benefits of RAID Administrator.

- (1) Support RAID 0, 1,0 + 1 & JBOD
- (2) Allowed maximum 4 disks connection to every controller
- (3) Hot-swapping failed hard disk in mirror array
- (4) Support independent use of hard disk
- (5) Support hot spare disk
- (6) Support Operating Systems: DOS/Windows 3.x, Windows98/Me, Windows NT4.0, Windows 2000, Windows XP and Linux.
- (7) Windows-based software for RAID management(compatible with BIOS)
- (8) Disk error alarm mechanism
- (9) Event log for easy trouble shooting
- (10) Plug-and-play

Chapter 2

INSTALLATION OF DRIVER

This chapter will guide user to install drivers for HPT372 RAID controller. Contents include:

2.1 Windows 98/Me

2.2 Windows NT4.0

2.3 Windows 2000

2.4 Windows XP

2.1 Windows 98/Me

✧ Automatic Installation

After the computer start-up, Windows system will find the newly installed RAID adapter and ask you to install its driver. Please follow the prompt to finish the driver installation.

✧ Manual Installation

If Windows can not find new hardware, the driver can be installed through the following steps :

1. Shut down all programs.
2. Click **Start-->Setup-->Control Panel**, then double-click on **Add New Hardware** icon.
3. Click **Next** in the popup window to continue.
4. A dialog box will appear and ask whether to let windows search new hardware. Select **No,I want to select the hardware form a list.** and then click **Next** to continue.
5. Hardwares of different types will be shown in the follow-on window. Select **SCSI Controllers** and then click **Next** to continue.
6. Insert the CD disk of driver into the CD-ROM drive, then click **Have Disk....**

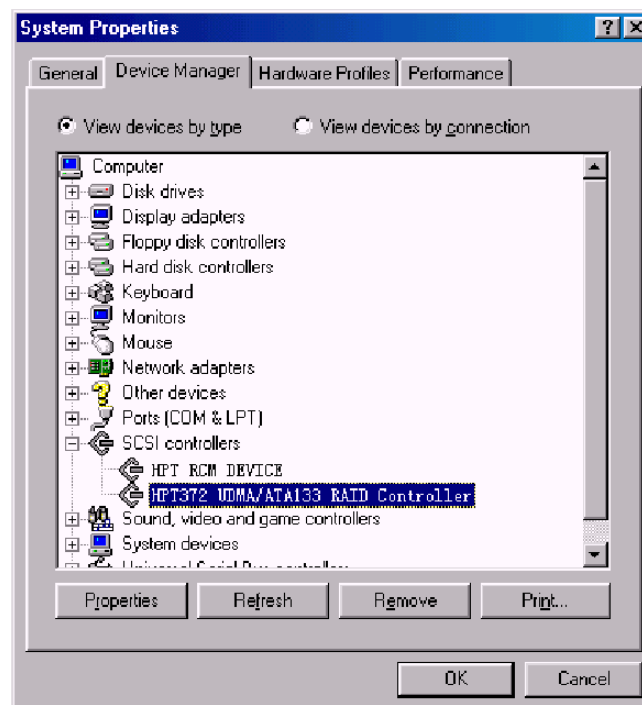
-
7. A dialog box will pop up, input the path of drive **D:\RAID\Win9X**. Then click **OK** to continue.
 8. In the follow-on window, driver will list out the controller type you need to install, please just click **Next** to continue.
 9. Follow the system prompt to install driver. When finished, restart the computer.

✳ **Verify Installation**

When the driver has been successfully installed and the computer restarted:

1. Right-click **My Computer** icon on desktop, and then select **Property** item from the popup menu.
2. Select **Device Manager** item from the popup window.

If there is HPT372 items under **SCSI Controllers**, it indicates that the driver has been installed properly.



If you cannot find these two above-mentioned device items, or there are ? or ! on device icon, it indicates that the driver has not been correctly installed and needs reinstallation.

2.2 Windows NT4.0

* Install driver under Windows NT4.0

1. Click **Start --> Setup --> Control Panel**, then double-click **SCSI Adapter** icon.
2. In the follow-on window, select **Driver** item. then click **Add** button.
3. In the follow-on window, select **Have Disk....**
4. Insert the CD disk of driver, input the path of driver **D:\RAID\WinNT**, then click **OK**.
5. In the follow-on window, select **HPT372 UDMA/ATA133 RAID Controller** item, then click **OK**.
6. Follow the system prompt to install the driver. When finished, restart the computer.

* Install driver in the process of Windows NT4.0 installation

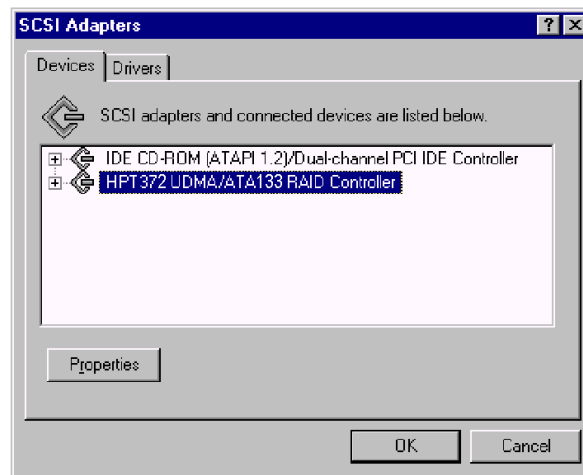
1. Press **F6** key when the system prompts Setup is inspecting **your computer's hardware configuration**.
2. Press **F6** key, the installation will continue. Later, installation program will remind user to press **S** key to specify other devices. Please press **S** key.
3. In the follow-on **Device Type** window, select **Other** item, then press **Enter** to confirm.
4. The installation program will prompt users to insert the CD disk of driver. Please insert it and then press **Enter** to confirm.
5. In the follow-on window, select **HPT372 UDMA/ATA133 RAID Controller**, then press **Enter** to confirm.
6. The follow-on interface will list the devices to be installed, in which **HPT372 UDMA/ATA133 RAID Controller** item should be included. (If users want to install other devices, please operate at this time. If all devices have been successfully installed, please go to next.)
7. Press **Enter** to continue the installation of Windows NT4.0.

* Verify Installation

When the driver has been successfully installed and the computer restarted:

1. Click **Start --> Setup --> Control Panel**, and then double-click **SCSI Adapter** item.

-
2. If there is **HPT372 UDMA/ATA133 RAID Controller** item in the popup window, it indicates that the driver has been successfully installed. Otherwise, users need to reinstall the driver.



2.3 Windows 2000

❄ Install driver under Windows 2000

Automatic Installation

Start the computer and enter the operating system of Windows 2000, the system will automatically detect new hardware and prompt users to install the driver. Please insert the CD disk of driver and follow the system prompt to finish the driver installation and restart the computer.

Manual Installation

If Windows can not find new hardware, the driver shall be installed through the following steps :

1. Click **Start --> Setup --> Control Panel**, select **Add/Remove New Hardware**. In the follow-on window, Click **Next** to continue.
2. In the follow-on window, select the first item **Add/Troubleshoot a device**, then click **Next** to continue.
3. In the follow-on device list, select the first item **Add New Device**, then click **Next** to continue.

-
4. Then the system will ask **Did you want Windows to search for your new hardware?** Please select **No, I want to select the hardware from a list.** then click **Next** to continue.
 5. In the follow-on window of device types, select **SCSI** and **RAID controllers**, then click **Next** to continue.
 6. In the follow-on window, select **Have Disk....**
 7. Please insert the CD disk of driver and input path name **D:\RAID\Win2k** into **Copy manufacturer's files from:** column, then click **OK**.
 8. In the follow-on type column, select **HPT372 UDMA/ATA133 RAID Controllers**.
 9. Follow the system prompt to finish the installation, and restart the computer.

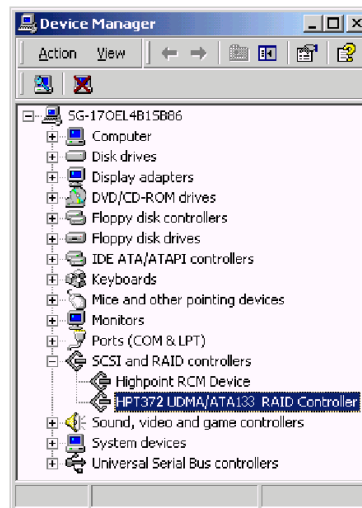
❄ **Install driver in the process of Windows 2000 installation**

1. If Windows 2000 is installed from the CD-ROM drive, please **F6** key when the message **Press F6 if you need to install third party SCSI or RAID driver** appears. If it is to type **Winnt** and install, after files have been copied and the computer restarted, press **F6** key when the message **Setup is inspecting your computer's hardware configuration** appears.
2. Press **S** key to specify additional devices when the **Windows 2000 Setup** window appears.
3. In the follow-on window of device type, please select **Other** and press **Enter** to continue.
4. Insert the CD disk of driver, then press **Enter** to continue.
5. The system will ask whether to install driver under **WinNT** or under **Windows 2000**, please select to install driver under **Windows 2000**.
6. The follow-on interface will list the devices to be installed, in which **HPT372 UDMA/ATA133 RAID Controller** item should be included. (If users want to install other devices, please operate at this time. If all devices have been successfully installed, please go to next.)
7. Press **Enter** to continue Windows 2000 setup.

❄ **Verify Installation**

When the driver has been successfully installed and the computer restarted:

1. Right-click **My Computer** icon, select **Property** item in the popup menu.
2. In the popup window, select **Hardware** item and then click **Device Manager** button.



If there is **HPT372 UDMA/ATA133 RAID Controller** item in the popup **Device Manager** window, it indicates that the driver has been successfully installed. Otherwise, please reinstall the driver.

2.4 Windows XP

❄ **Install driver under Windows XP**

Automatic Installation

Start the computer and enter the operating system of Windows XP, the system will automatically detect new hardware and prompt users to install the driver. Please insert the CD disk of driver and follow the system prompt to finish the driver installation and restart the computer.

Manual Installation

If Windows can not find new hardware, the driver shall be installed through the following steps :

-
1. Click **Start --> Setup --> Control Panel**, select **Add/Remove New Hardware**. In the follow-on window, Click **Next** to continue.
 2. In the follow-on window, select the first item **Add/Troubleshoot a device**, then click **Next** to continue.
 3. In the follow-up device list, select the first item **Add New Device**, then click **Next** to continue.
 4. Then the system will ask **Did you want Windows to search for your new hardware?** Please select **No, I want to select the hardware from a list.** then click **Next** to continue.
 5. In the follow-on window of device types, select **SCSI and RAID controllers**, then click **Next** to continue.
 6. In the follow-on window, select **Have Disk....**
 7. Please insert the CD disk of driver and input path name **D:\RAID\WinXP** into **Copy manufacturer's files from:** column, then click **OK**.
 8. In the follow-on type column, select **HPT372 UDMA/ATA133 RAID Controllers**.
 9. Follow the system prompt to finish the installation, and restart the computer.

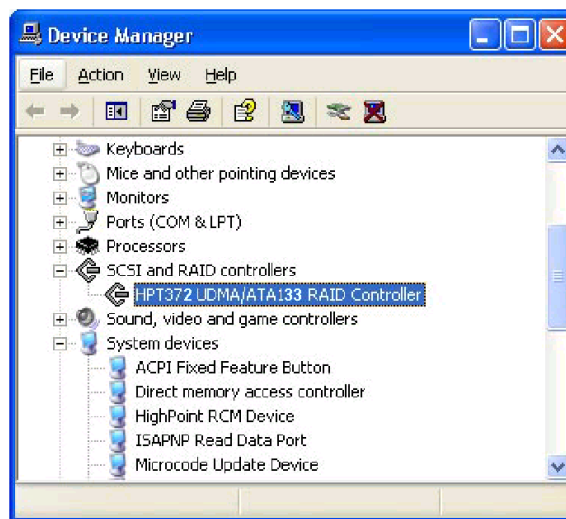
❄ **Install driver in the process of Windows XP installation**

1. Booting from CD-ROM, when the **Windows XP Setup** blue screen appear and prompt user to press **F6** key to install third party SCSI or RAID driver, please press **F6** Key.
2. Press **S** key to specify additional devices when the **Windows XP Setup** window appears.
3. Insert the CD disk of driver, then press **Enter** to continue.
4. In the follow-on window of device type, please select **HPT372 UDMA/ATA133 RAID Controller for Windows XP** to continue.
5. The system will ask whether to install driver under **WinNT** or under **Windows XP**, please select to install driver under **Windows XP**.
6. The follow-on interface will list the devices to be installed, in which **HPT372 UDMA/ATA133 RAID Controller** item should be included. (If users want to install other devices, please operate at this time. If all devices have been successfully installed, please go to next.)
7. Press **ENTER** to continue Windows XP setup.

❄ **Verify Installation**

After the driver has been installed and the computer restarted:

1. Right-click **My Computer** icon, then select **Property** item from the popup menu.
2. In the popup window, select **Hardware** tab and then click **Device Manager** button.



If **HPT372 UDMA/ATA133 RAID Controller** and **HighPoint RCM Device**

items exists in the popup **Device Manager** window (see above), it indicates that the driver has been successfully installed.

Otherwise, if user cannot find these four device items, or there is ? or ! markings on device icon, it indicates that the driver has not been correctly installed and user need to delete the devices and reinstall the drivers.

Chapter 3

USE RAID ADMINISTRATOR

3.1 Install RAID Administrator

3.2 Run RAID Administrator

3.3 Create Stripe Array

3.4 Create Mirror Array

3.5 Add/Remove Spare Disk

3.6 Synchronize/Validate/Verify Mirror Array

3.7 Create Span Array

3.8 Create 0+1 Array

3.9 Remove Disk Array

3.10 Set Transfer Mode

3.11 Device Status

3.12 Hot-swapping Hard Disks of Mirror Array

3.13 Event Log

3.1 Install RAID Administrator

Please take the following steps to install RAID Administrator:

1. Double click on the setup program: **setup.exe**, then follow the program prompt to finish the installation.
2. After the installation is complete, restart the computer.

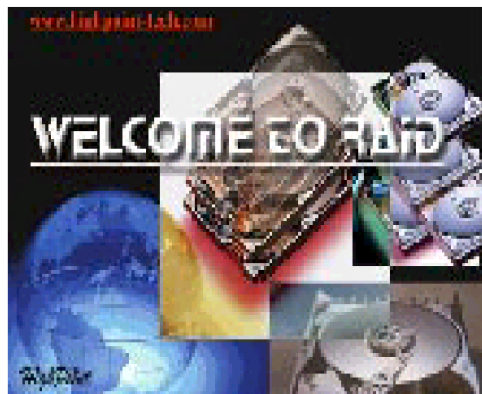
With the implicit option, the setup program will create program group: **Start—>Program—>RAID Administrator**. This program group contains the following contents:

RAID Administrator	running program
RAID Help	help file
Uninstall RAID	uninstalling program

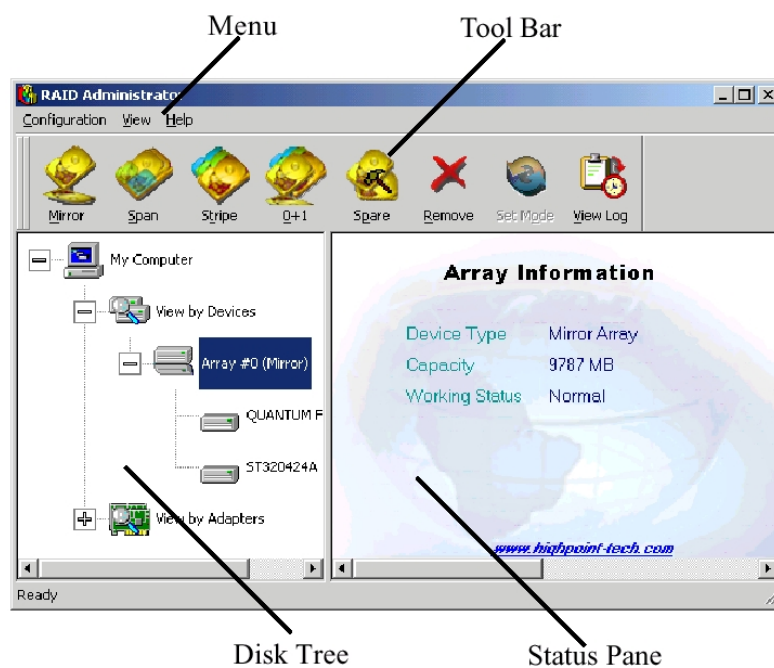
3.2 Run RAID Administrator

The following steps should be taken to run RAID Administrator.”:

1. Click **Start --> Program --> RAID Administrator --> RAID Administrator**, the below welcome interface will come up.



2. The above interface stays only for a while. Coming up is the main interface of RAID Administrator(see below).



Tool Bar:

It provides shortcut way to execute the common commands. Commands shown by **Tool Bar** can also be found under **Configuration** menu.

Disk Tree:

It shows the connecting information of all hard disks in two ways: **View by Device** and **View by Adapter**.

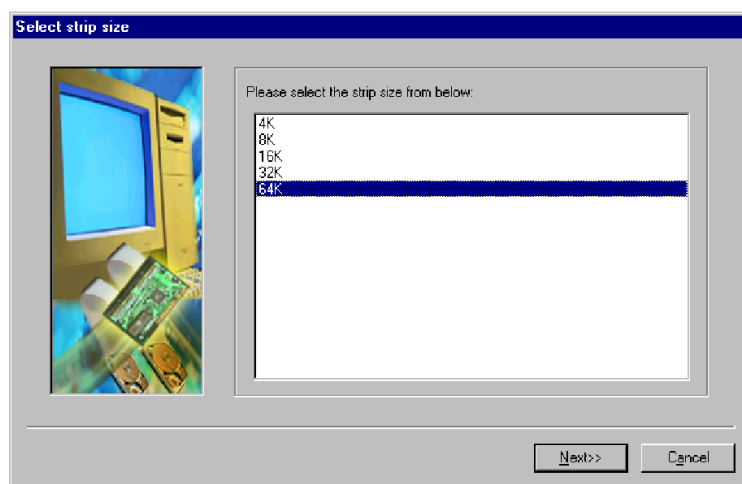
Status Pane:

It lists the information and working status of selected hard disks or disk arrays.

3.3 Create Stripe Array

The following steps shall be taken to create the stripe array.

1. Click **Stripe** icon on the tool bar.
2. Select the strip size in the follow-on window, and then click **Next** button.



3. In the follow-on dialog box, select hard disk from **Available Disks** column. Add them into **Stripe Array Member Disks** column by clicking the corresponding arrow button. Then click **Next** button.
4. In the follow-on dialog box, click **Create** button to create stripe array, or click **Cancel** button to cancel this creation. If the cancel operation has been selected, the system will remain unchanged.
5. After the completion of creating stripe array , shut down all other programs. Then click **Yes** to restart the computer, or select **No** to restart the computer later .

Note:

1. At least two hard disks are needed to create the stripe array. Disks can be connected at any cable and setted as either master or slave device.
2. The capacity of the stripe array is equal to the product of the number of total hard disks and the smallest HD capacity.

Suggestion:

1. When selecting the strip size , if the user does not know which one is suitable, please select the default size **64K**.
2. In order to avoid the capacity waste , try to use hard disks with the identical capacity to create stripe array .
3. For the consideration of performance, if two hard disks are used, please connect them to different IDE channels respectively.

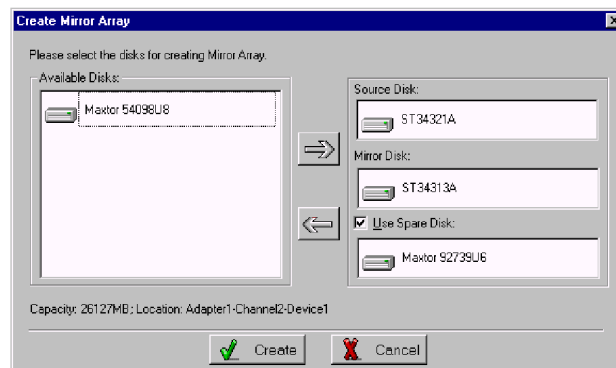
Warning:

1. The data on all disks will be destroyed after the creation of the stripe array.

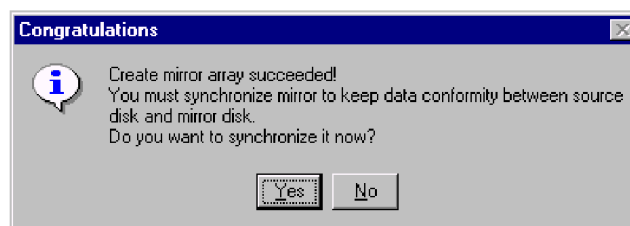
3.4 Create Mirror Array

The following steps shall be taken to create the mirror array:

1. Click **Mirror** icon on the tool bar.
2. In the follow-on dialog box, select hard disks from **Available Disks** column, add them into **Source Disk** column or **Mirror Disk** column respectively by clicking the corresponding arrow button.
3. If the user wants to use a spare disk, please select **Use Spare Disk** item. Then select hard disks from **Available Disks** column, and add it into **Use Spare Disk** column.



4. Click **Create** to begin the creation or **Cancel** to exit. If you select the cancel operation, the system will remain unchanged.



5. After the creation is complete, the program will prompt you to synchronize mirror, select **Yes** to begin or **No** to cancel.
6. After your selection of either, the program will prompt you to restart your computer.

If the user has set a spare disk, when the read/write failure of either the source disk or the mirror disk, the program will automatically use the left normal disk and the spare disk to rebuild the mirror array, thereby providing dual security for data.

Note:

1. At least the source disk and the mirror disk are needed in the creation of the mirror array. The spare disk is optional. Disks can be connected at any cable and setted as either master or slave device.
2. The capacity of either the mirror disk or the spare disk shall be no less than that of the source disk.
3. The capacity of the mirror array is equal to that of the source disk.

Suggestion:

1. In order to avoid the capacity waste , please use hard disks with the identical capacity to create mirror array.

Warning:

1. The creation of the mirror array will make only the data on the source disk be preserved while the data on both the mirror disk and the spare disk destroyed.

3.5 Add/Remove Spare Disk

If the user does not want to set a spare disk during the creation of mirror, he can add the spare disk into the mirror array later. The user can also remove the spare disk that has been set. The steps to add/remove the spare disk are as follows:

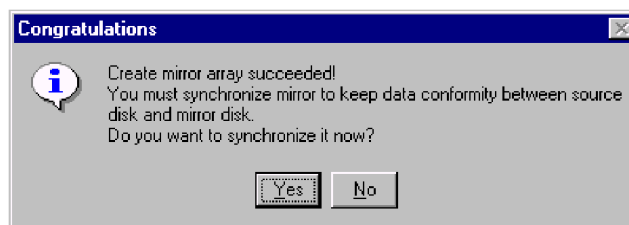
1. Select the mirror array to be add/remove the spare disk.
2. Click **Spare** icon on the tool bar.
3. In the popup dialog box , select **Add** or **Remove** operation, then click **Next** button.
4. If the user is to add the spare disk, select the hard disk to be used in the follow-on dialog box , and then click **Finish** button .
5. If the user is to remove the spare disk, click **Finish** button in the follow-on dialog box .

3.6 Synchronize/Validate/Verify Mirror Array

* Synchronize Mirror

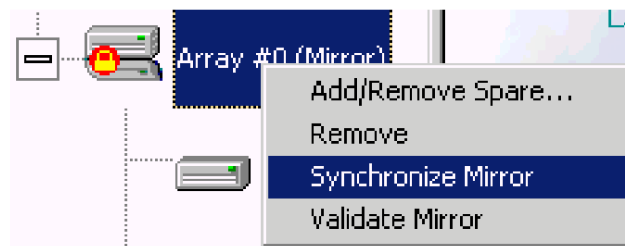
After the completion of creating mirror array, the data on the source disk has not been copied to the mirror disk. The data on the source disk and the mirror disk do not keep identical yet. The user should synchronize mirror, by which the data on the source disk will be fully copied to the mirror disk. Thus the data on the disks in the mirror array become identical.

Once the creation of the mirror array is finished, the user will be asked whether to synchronize mirror at once or not. Select **Yes** to begin the synchronize operation or **No** to skip.



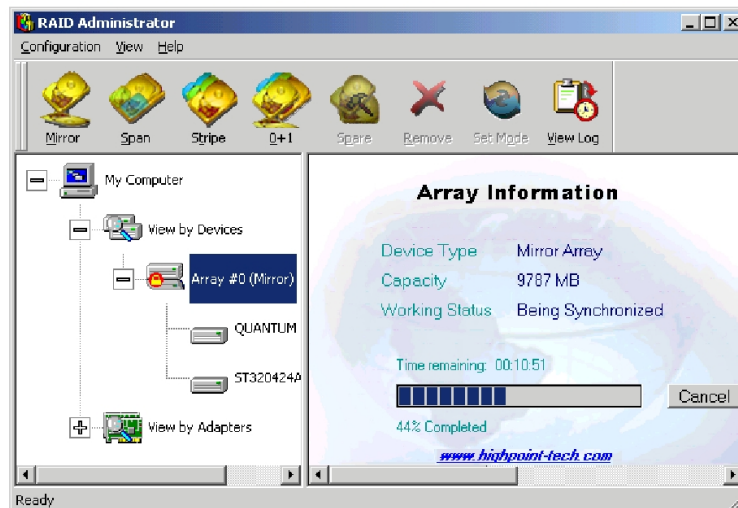
The status of the mirror array will remain locked if No selected to skip the synchronize operation. The user may at any time synchronize mirror which is in either locked status or normal status. The detailed steps to synchronize mirror are as follows:

1. Right-click the mirror array to be synchronized.



2. Select **Synchronize Mirror** item from the popup menu.

The mirror array being synchronized is labeled at locked status. By selecting this disk array, the user can see the progress of synchronizing mirror.



❄ **Validate Mirror**

The user can validate the locked mirror array through the following steps:

1. Right-click the locked mirror array .
2. In the popup menu, select **Validate Mirror** item.

Once the mirror disk is validated, it will be implicit by the program that the data on the mirror disk is the same with that on the source disk. And the program will no longer ask the user to synchronize mirror. If the user wants to copy the data from the source disk to the mirror disk, he has to synchronize mirror manually.

❄ **Verify Mirror**

The operation of the verify mirror will compare the data on the source disk and that on the mirror disk. If any discrepancy is found between them, the program will ask the user to synchronize mirror to keep the data in the mirror array identical. The detailed steps to verify mirror are as follows:

1. Right-click the mirror array to be verified.
2. In the popup menu, select **Verify Mirror** item.

By selecting this disk array, the user can check the verification progress at the status pane.

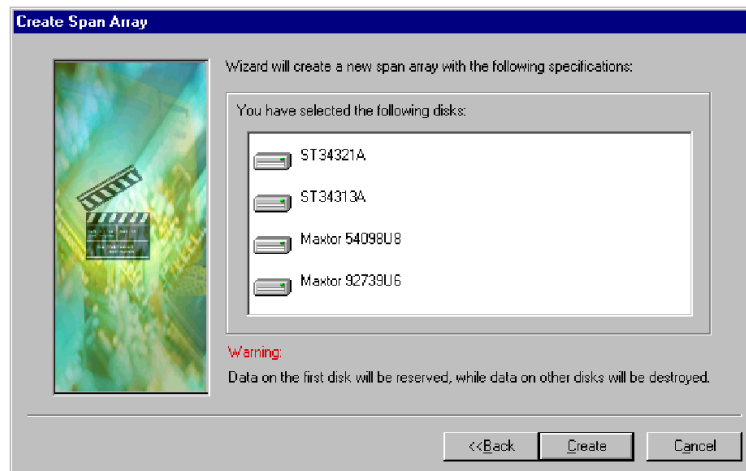
Suggestion:

1. After the creation of the mirror array, if the user wants to keep the source disk data preserved, he shall select **Yes** when the program asks him whether to synchronize mirror or not.

3.7 Create Span Array

Please follow the steps below to create the span array:

1. Click **Span** icon on the tool bar.
2. In the popup window, select hard disks from **Available Disks** column. Add them into **Span Array Member Disks** column by clicking the corresponding arrow. Then click **Next** to continue.
3. In the follow-on confirmation dialog box , please click **Create** button to start the creation or click **Cancel** button to cancel the creation . If the user selects **Cancel**, the system will remain unchanged.



4. After the create operation is complete, please shut down all other programs. And then click **Yes** to restart the computer. The user may also select **No** to restart the computer later .

Note:

1. At least two hard disks are needed in the creation of the span array. Disks can be connected at any cable and setted as either master or slave device.

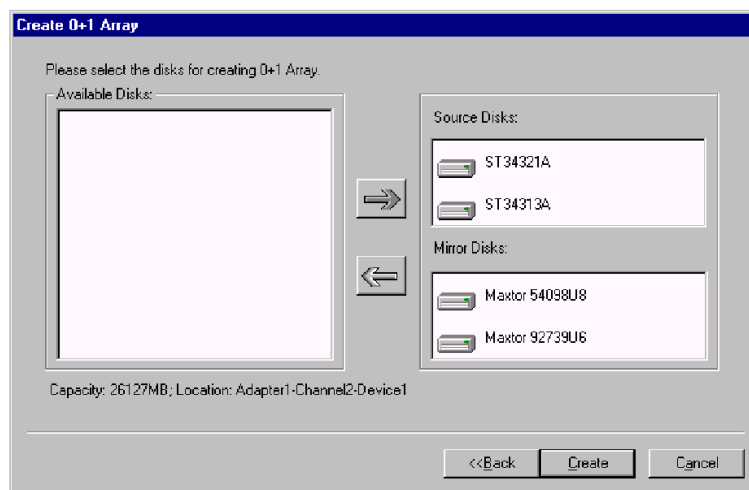
Warning:

1. In the creation of the span array, only the data on the first member disk will be preserved while the data on others will be completely destroyed.

3.8 Create 0+1 Array

The following steps shall be taken to create the 0 + 1 array.

1. Click **0 + 1** icon on the tool bar.
2. Select the strip size.
3. In the popup dialog box , select the hard disks to be used, and add them into **Source Disks** column or **Mirror Disks** column.



4. Click **Create** button to create or **Cancel** button to cancel the creation. If the user selects **Cancel**, the system will remain unchanged.
5. When the creation is complete, the program will ask the user to restart the computer.

Note:

1. Four hard disks are needed in the creation of the 0 + 1 array.
2. In the creation of the 0 + 1 array, the source disk will actually be the first stripe array composed of two hard disks, the mirror disk will actually be the second stripe array composed of two hard disks.
3. The capacity of the stripe array as the source disk shall be not larger than that of the stripe array as the mirror disk.
4. The capacity of the 0 + 1 array is equal to that of the stripe array as the source disk.

Suggestion:

1. In order to avoid the capacity waste , please use hard disks with the identical capacity to create the 0 + 1 array.

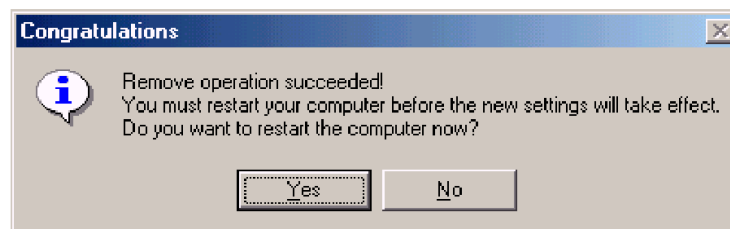
Warning:

1. The data on all member disks will be destroyed after creating the 0 + 1 array.

3.9 Remove Disk Array

The following steps shall be taken to remove disk array.

1. Select the disk array to be deleted in the disk tree.
2. Click **Remove** icon on the tool bar.
3. In the popup dialog box, select **Yes** to confirm the remove operation, select **No** to cancel the remove operation.
4. After the remove operation is complete, shut down all other programs. Then click **Yes** to restart the computer, or select **No** to restart the computer later.



Note:

1. Remove mirror array operation will generate two physical disks with the identical data on each.
2. Remove 0 + 1 array operation will generate two stripe arrays with the identical data on each.

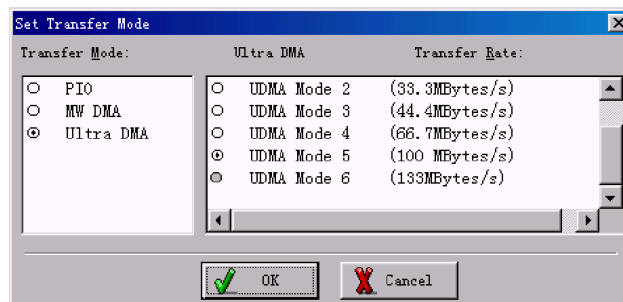
Warning:

1. Remove stripe array operation will lead to the data on the striping disks all destroyed.
2. Remove span array operation will lead to the data on the first disk reserved while the data on other disks will be all destroyed.

3.10 Set Transfer Mode

The following steps shall be taken to set transfer mode of hard disk:

1. Select the hard disk in the disk tree.
2. Click **Mode** icon on the tool bar.
3. In the popup **Set Transfer Mode** window select the mode to be set.



4. Click **OK** button to finish or click **Cancel** button to cancel .If **Cancel** button is clicked, the system will remain unchanged.
5. The setting will take effect only after the restart of computer.

Suggestion:

1. BIOS and driver of RAID Adapter can automatically detect the optimum transfer mode supported by the corresponding hard disk. Usually no need to change the transfer mode.
2. If the option box of transfer mode is gray, it means such mode is not supported by this hard disk and can not be set.

3.11 Device Status

Raid Administrator detects the status of each device and shows their status information with different icons to prompt users(see below).



Device is with error.



Device is normal.



Device is not operatable and needs rebooting.



Mirror Array needs to be synchronized.

Note:

1. When reading data from the mirror array, the source disk is always to be read first, and the mirror disk will not be accessed if the data is successfully read out from the source disk and so the mirror disk's failure can not be detected. But when writing data to the mirror array, both of the member disks will be accessed, so failure on either of them can be detected.

Suggestion:

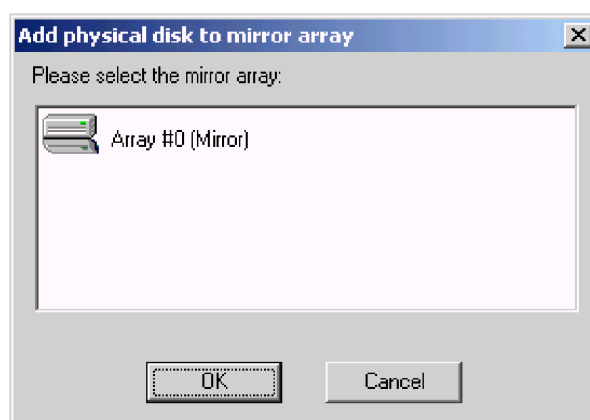
1. When a failure occurs on a member disk of the mirror array, this array will be labeled in error status. At this time, the mirror array can continue work normally with the other normal disk. In order to avoid data loss due to the failure of the left disk, the user shall settle the fault first and rebuild mirror with this left normal disk.

Warning:

1. When the member disk of either the stripe array or the span array failed, the corresponding disk array will be labeled in error status, and it will not be able to work.
2. If both the source disk and the mirror disk failed, the mirror array will not be able to work. The user shall settle the fault quickly.

3.12 Hot-swapping Hard Disks of Mirror Array

During the working process of the mirror array, if there is failure of either the source disk or the mirror disk and the spare disk has not been set, the user can remove the failed hard disk while the computer is still on and hot-plug in a new one. The program will automatically detect the plug-in of the new hard disk and prompt the user whether to add the newly plugged hard disk into the failed mirror array(see below).



Select **OK** to add it into the failed mirror array, the newly plugged hard disk and the left normal member disk will generate a new mirror array that will be automatically synchronized to keep the data on its member disks identical. Hot-swapping hard disks of mirror array can quick recover the failed mirror array without a shut-down of the computer or a break-off of the work, thereby providing users with the maximum data security and the easiest operation.

Note:

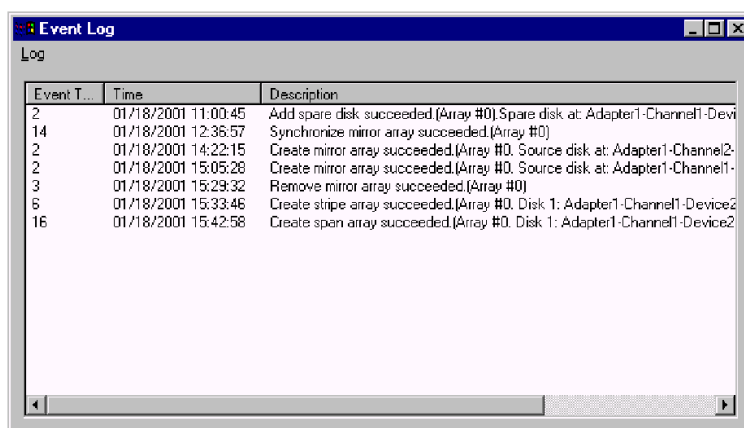
1. The hard disk used to be a substitute for the failed one must keep the same connection to IDE and setting of jumper to that of the failed one. For example, if the failed hard disk is connected to IDE2 and set as master, its substitute must be connected to IDE2 and set as master.

Warning:

1. In order to avoid any possible damage to both the system and the device by the manual hot-swap of power and cable. Please operate hotswapping hard disks of mirror array with the special hard disk swapping box.

3.13 Event Log

Event Log window will be opened by clicking **View Log** icon on the tool bar.



Event log window lists all the historical operation information including event, time & description, thereby providing reference for solving the problems in the operation of RAID Administrator.

Event log menu provides users with functions as follows:

- | | |
|---------------|---|
| Set Log File: | Set the log file for recording the events . |
| Clear Log: | Clear all the current records in the file. |
| Print Log: | Print the log. |
| Exit: | Shut the event log window. |

Chapter 4

BIOS CONFIGURATION

4.1 Enter into BIOS Configuration Utility

4.2 Create RAID

4.3 Delete RAID

4.4 Rebuild Mirror Array

4.5 Add Spare Disk

4.6 Remove Spare Disk

4.7 Set Disk Mode

4.8 Set Boot Disk.

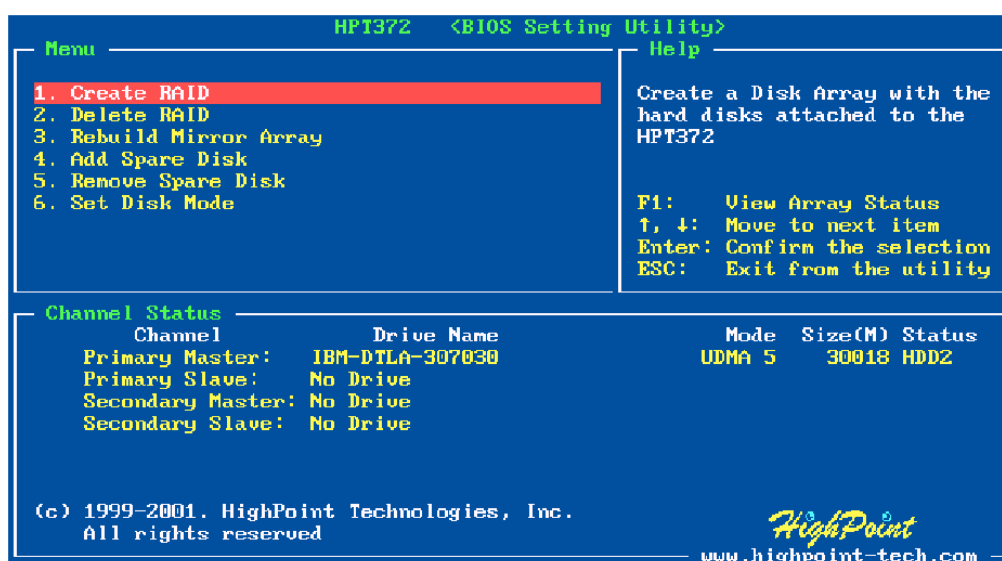
4.1 Enter into BIOS Configuration Utility

When the following information is displayed on screen during the system starting, press **Ctrl + H** key to enter into BIOS configuration utility.

```
HighPoint Technologies, Inc. HPT372 UDMA/ATA RAID Controller v2.0
(c) 1999-2001. HighPoint Technologies, Inc. All rights reserved

Press <Ctrl><H> to run BIOS Setting Utility
Scan Devices. Please wait .....
```

The main interface of BIOS configuration utility is as below:



Menu:

It displays all items of the operating command.

Help:

It displays the illustrating information of the current selection and the available operation prompts.

Channel Status:

It displays the status information of all devices in connection. When it is active, users can select the device to be operated.

4.2 Create RAID

The following steps shall be taken to create RAID in BIOS.

1. Use the arrow key to select **1. Create RAID**.
2. Press **Enter** to confirm and go to next.
3. Select **1. Array Mode** in the popup subinterface and press **Enter**.
4. Select the intended RAID level in the popup selection box and press **Enter**.
5. Select **2. Select Disk Drives** in the previous subinterface and press **Enter**.
6. Select the disks to be used for creating the disk array and press **Enter** to confirm in the channel status zone.
7. Select **3. Start Creation Process**.
8. Pay attention to the warning message, and press **Y** to finish creation.

Note:

1. If you have selected **Striping (RAID 0) for Performance** in the popup subinterface after the operation of **1. Array Mode**, you should directly go to **3. Strip Size 64K** and then select **4. Start Creation Process**. The default strip size is **64K**.
2. Different warning messages appear according to different RAID levels.

4.3 Delete RAID

The following steps shall be taken to delete RAID.

1. In the menu zone, select **2. Delete RAID** , press **Enter** to confirm this operation and go to next.
2. In the validated channel status zone, use the arrow key to select the disk array to be deleted and press **Enter** to confirm.
3. Press **Y** when warned **Are you sure you want to remove the disk array?**

4.4 Rebuild Mirror Array

The following steps shall be taken to rebuild the mirror array.

1. In the menu zone, select **3. Rebuild Mirror Array** , press **Enter** to confirm this operation and go to next.
2. In the menu zone of the popup subinterface, select **1. Select Source Disk: None** and press **Enter** to confirm.
3. In the validated channel status zone, select the source disk of the mirror array and then press **Enter**.
4. In the menu zone of the popup subinterface, select **2. Select Target Disk: None** and press **Enter** to confirm.
5. In the validated channel status zone, select the target disk of the mirror array and then press **Enter**.
6. In the menu zone of the popup subinterface, select **3. Start Duplication Process** and press **Enter** to confirm.
7. Press **Y** when asked **The last time rebuild not completed. Continue?**

4.5 Add Spare Disk

The following steps shall be taken to add the spare disk.

1. In the menu zone, select **4. Add Spare Disk** and press **Enter** to confirm.
2. In menu zone of the popup subinterface, select **1. Select Mirror Array: None** and press **Enter** to confirm.
3. In the validated channel status zone, select the mirror array and press **Enter** to confirm.
4. In the menu zone of the popup subinterface , select **2. Select Spare Drive: None** and press **Enter** to confirm.
5. In the validated channel status zone, select the spare disk to be added and press **Enter** to confirm.

4.6 Remove Spare Disk

The following steps shall be taken to remove the spare disk.

1. In the menu zone, select **5. Remove Spare Disk** and press **Enter** to confirm.
2. The **1. Select Mirror Array: None** item appears in the menu zone of the popup subinterface.
3. In the validated channel status zone, select the spare disk to be removed and press **Enter** to confirm.

4.7 Set Disk Mode

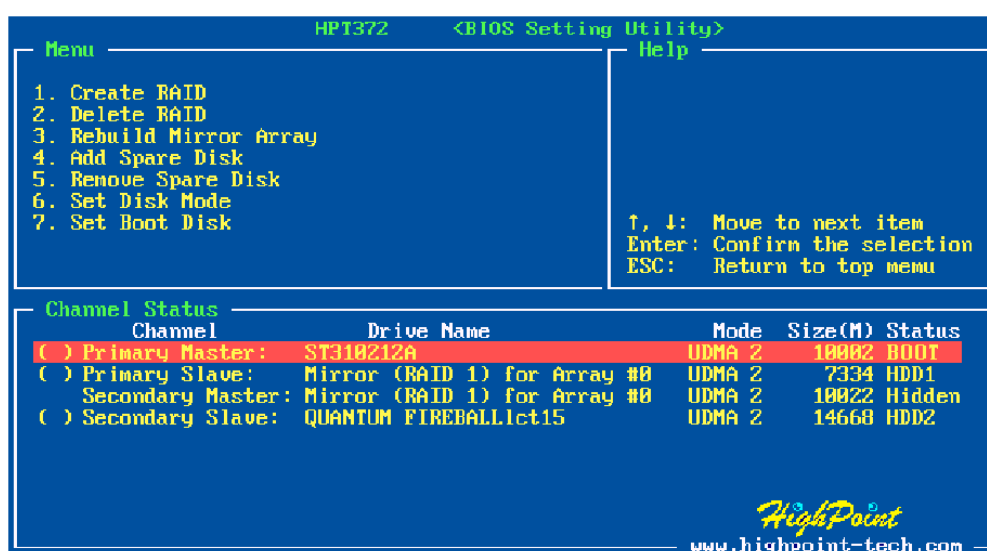
The followng steps shall be taken to set the disk mode.

1. Select **6. Set Disk Mode** in the menu zone and press **Enter** to confirm.
2. Select the disk mode to be set in the popup selection box and press **Enter** to confirm.

4.8 Set Boot Disk.

The following steps shall be taken to set the boot disk:

1. In the menu zone, select **7. Set Boot Disk** item, press **Enter** to confirm this operation and go to next .
2. In the validated channel status zone , use the arrow key to select the boot device and press **Enter** to confirm.



Note:

1. The **Set Boot Disk** item appears on condition that no hard disk is connected to IDE on motherboard.
2. After the boot disk is set, its status will become **Boot**.