

*Shuttle*<sup>®</sup>



## **BR06S Software Quick Start Guide**

Shuttle®

XPC Installation Guide

## Copyright

©2017 by Shuttle® Inc. All Rights Reserved.

Other brands and product names used herein are for identification purposes only and may be trademarks of their respective owners.

## Disclaimer

Shuttle® Inc. shall not be liable for any incidental or consequential damages resulting from the performance or use of this product.

Shuttle® Inc. makes no representation or warranty regarding the contents of this manual. Information in this manual had been carefully checked for accuracy; however, no guarantee is given as to the correctness of the contents. For continuing product improvement, Shuttle® Inc. reserves the right to revise the manual or make changes to the specifications of this product at any time without notice and obligation to any person or entity regarding such change. The information contained in this manual is provided for general use by customers.

## Trademarks

Shuttle is a registered trademark of Shuttle® Inc.

## General Notice

Other brand and product names used herein are for identification purposes only and may be trademarks of their respective owners.

## TABLE OF CONTENTS

---

---

Setup Wizard .....	4
1.1 Language Settings .....	4
1.2 Licence .....	4
1.3 Host Name .....	5
1.4 Network .....	5
1.4.1 DHCP .....	5
1.4.2 Fixed IP .....	6
1.4.3 No Network .....	6
1.5 Time Zone .....	7
1.6 Choose the Mode You Require .....	7
1.7 Create a Power User .....	8
1.7.1 Register Face .....	9
1.7.2 Register Fingerprint .....	10
1.7.3 Register NFC .....	11
Enter BR06S .....	12
Admin Menu .....	14
3.1 Settings .....	14
3.1.1 System Settings .....	14
3.1.1.1 Language .....	14
3.1.1.2 Host Name .....	15

---

---

---

---

3.1.1.3 Network .....	15
3.1.1.4 Time Zone.....	16
3.1.2 Advanced Settings .....	17
3.1.2.1 Event Trigger .....	17
3.1.2.2 Green Power .....	18
3.1.2.3 Audio.....	18
3.1.2.4 Factory Default .....	19
3.1.3 Password .....	20
3.1.4 User List.....	21
3.1.4.1 Search .....	22
3.1.4.2 Add User.....	22
3.1.4.3 Modify User .....	23
3.1.4.4 Delete User.....	23
3.1.4.5 Backup.....	24
3.1.5 Log.....	25
3.1.5.1 Login .....	25
3.1.5.2 Event .....	26
3.1.6 Backup .....	26
3.2 System Info .....	27

---

---

## Setup Wizard

### 1.1 Language Settings

1. Choose your language.
2. Press **“Next”** button to continue to the next step.



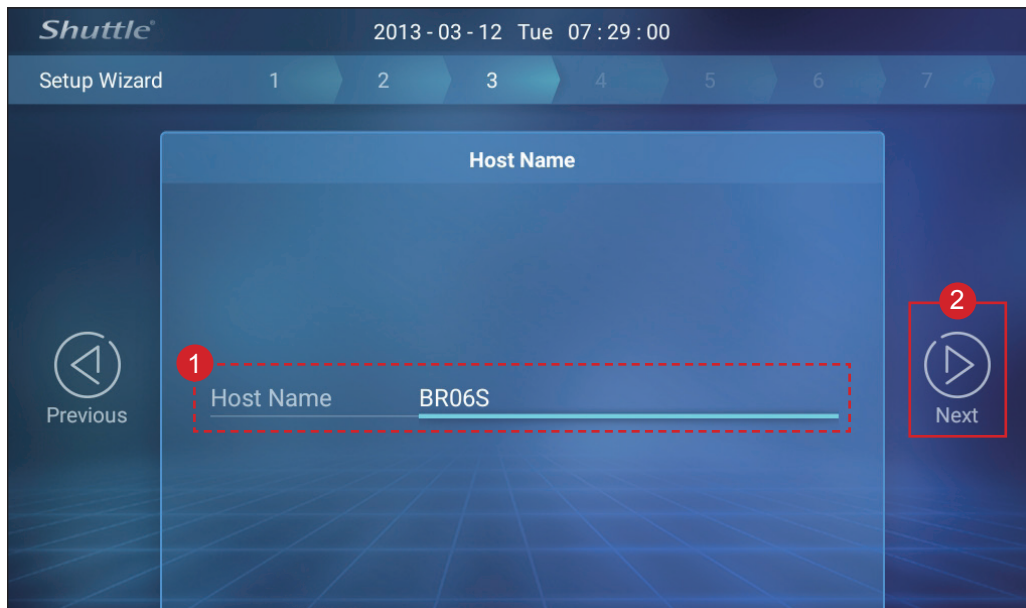
### 1.2 Licence

1. Press **“I Agree”** button to the terms and conditions.
2. Press **“Next”** button to continue to the next step.



## 1.3 Host Name

1. Create a host name.
2. Press “**Next**” button to continue to the next step.

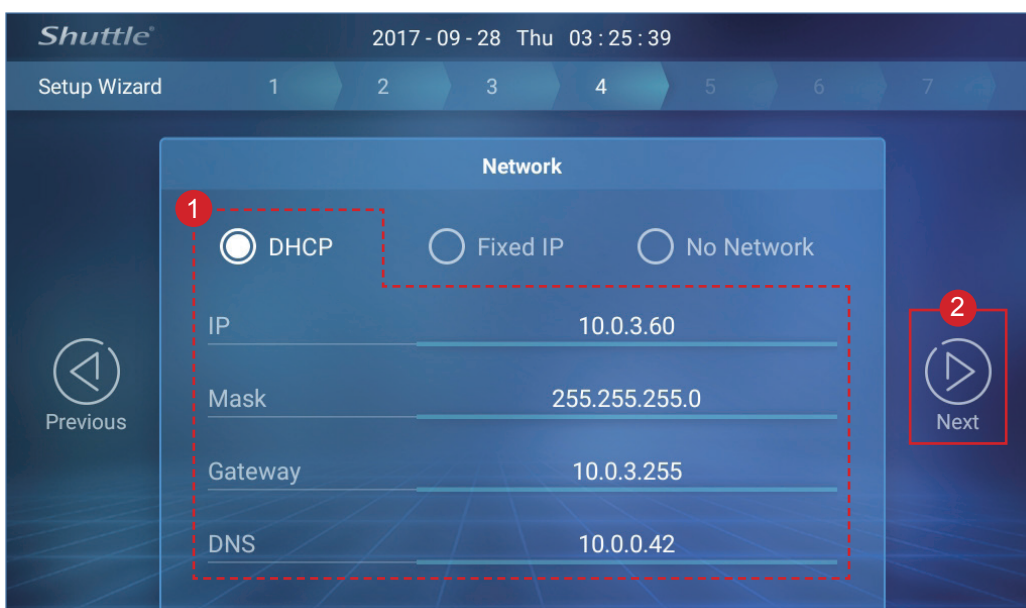


## 1.4 Network

To select the network connection type.

### 1.4.1 DHCP

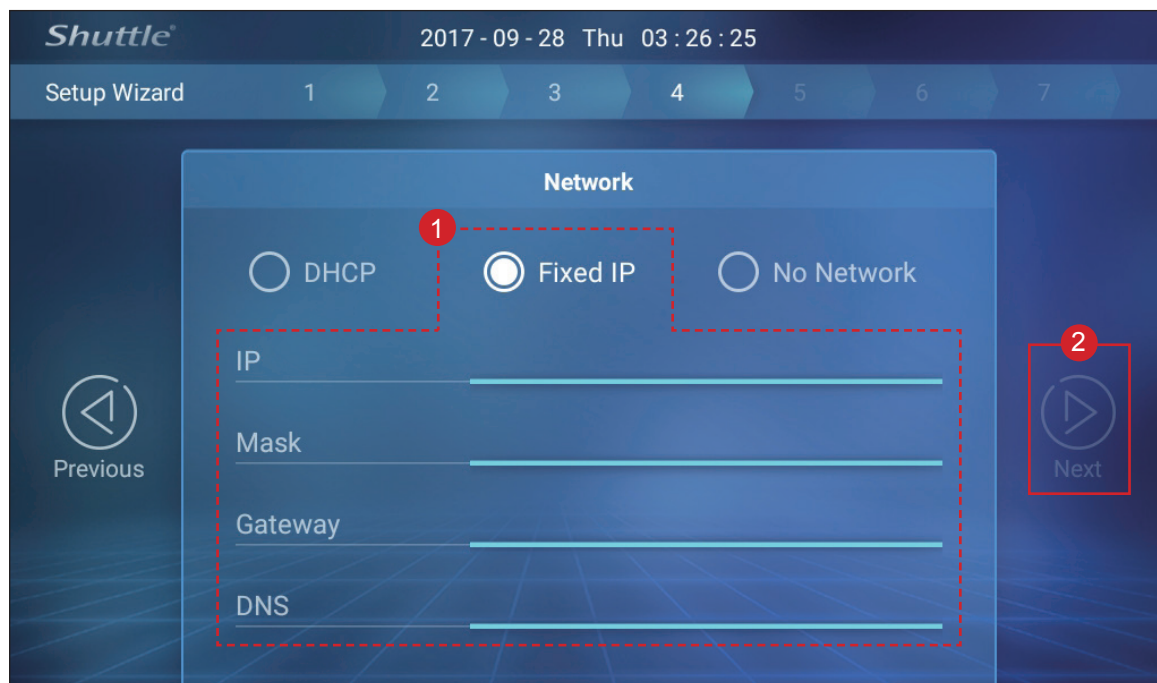
1. When connect to a network, BR06S will automatically search for Address info.
2. Press “**Next**” button to continue to the next step.





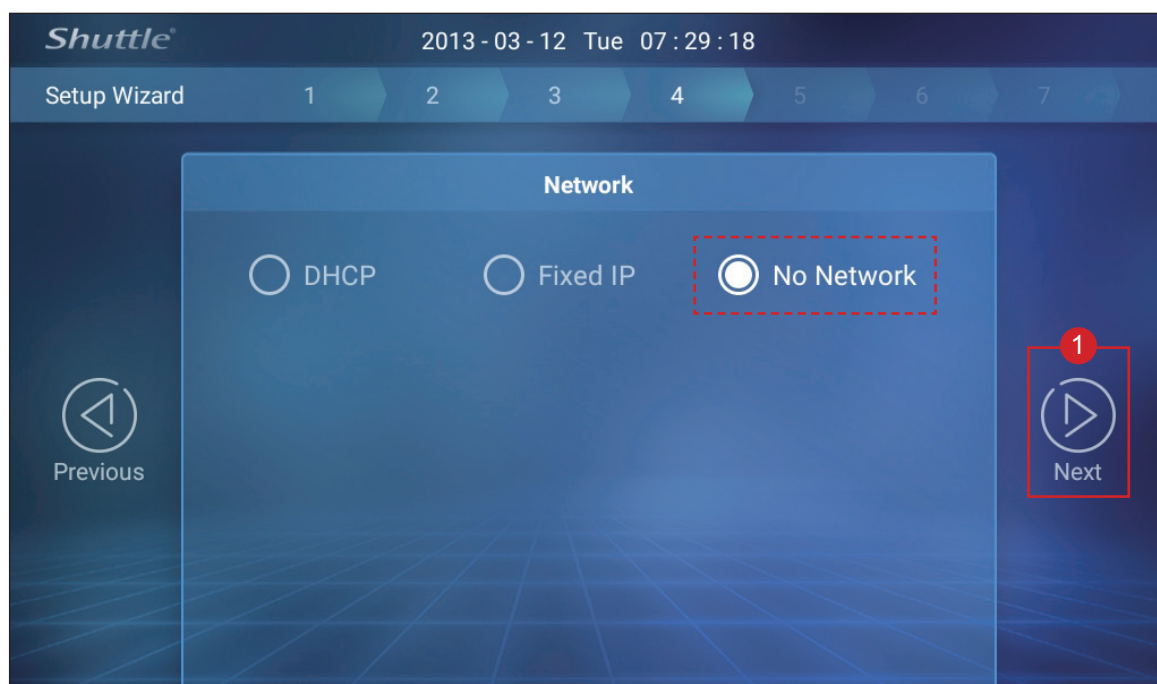
## 1.4.2 Fixed IP

1. Need to fill in Fixed IP's Address info.
2. Press "**Next**" button to continue to the next step.



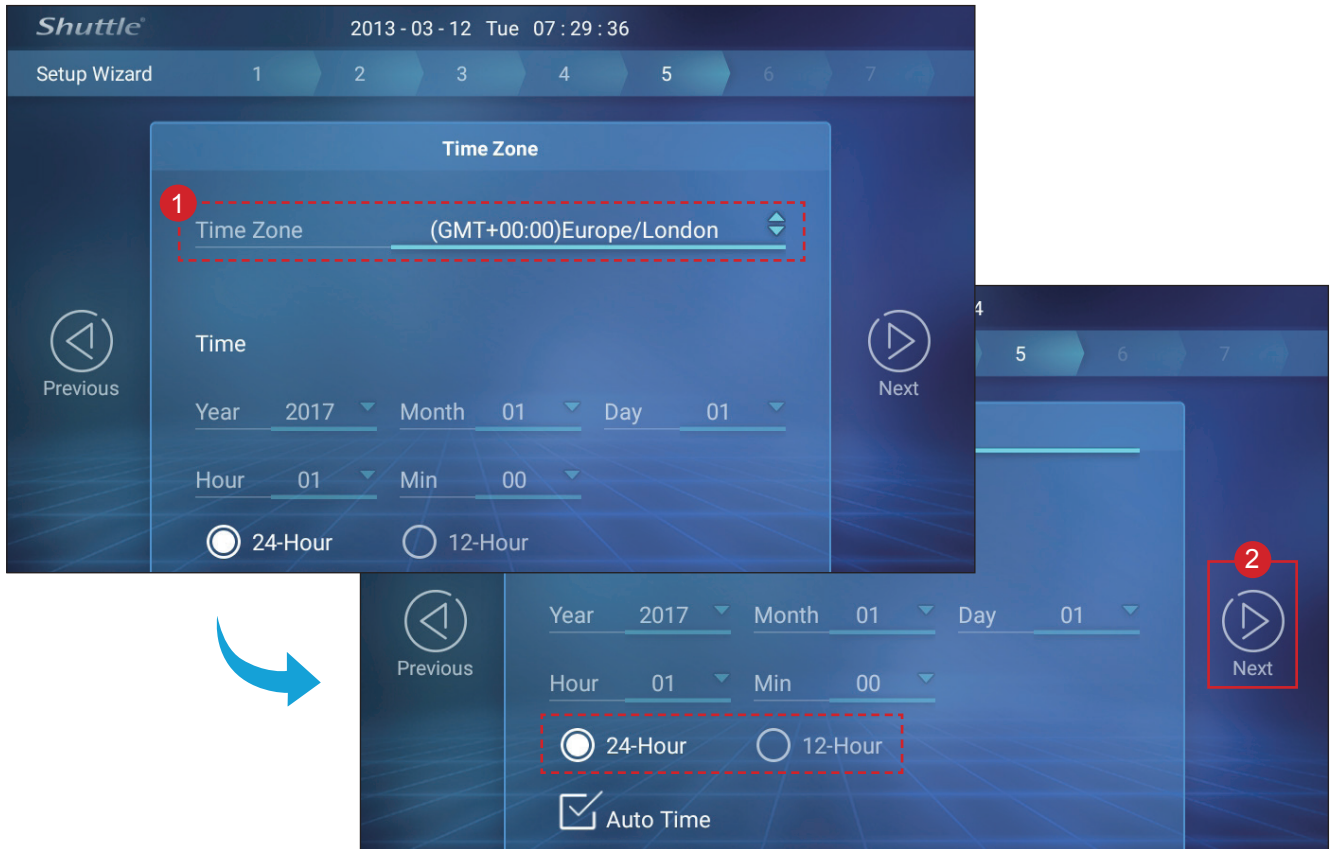
## 1.4.3 No Network

1. Press "**Next**" button to continue to the next step.



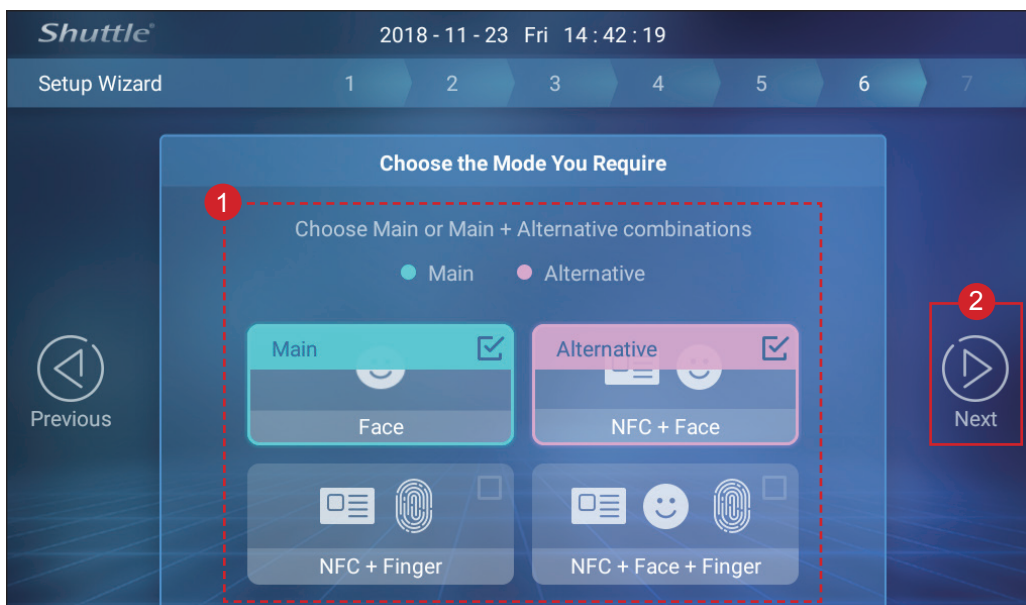
## 1.5 Time Zone

1. Select the **Time Zone**.
2. Press **“Next”** button to continue to the next step.



## 1.6 Choose the Mode You Require

1. Choose a **“Main mode”** or a **“Alternative mode”** (optional) you require.
2. Press **“Next”** button to continue to the next step.

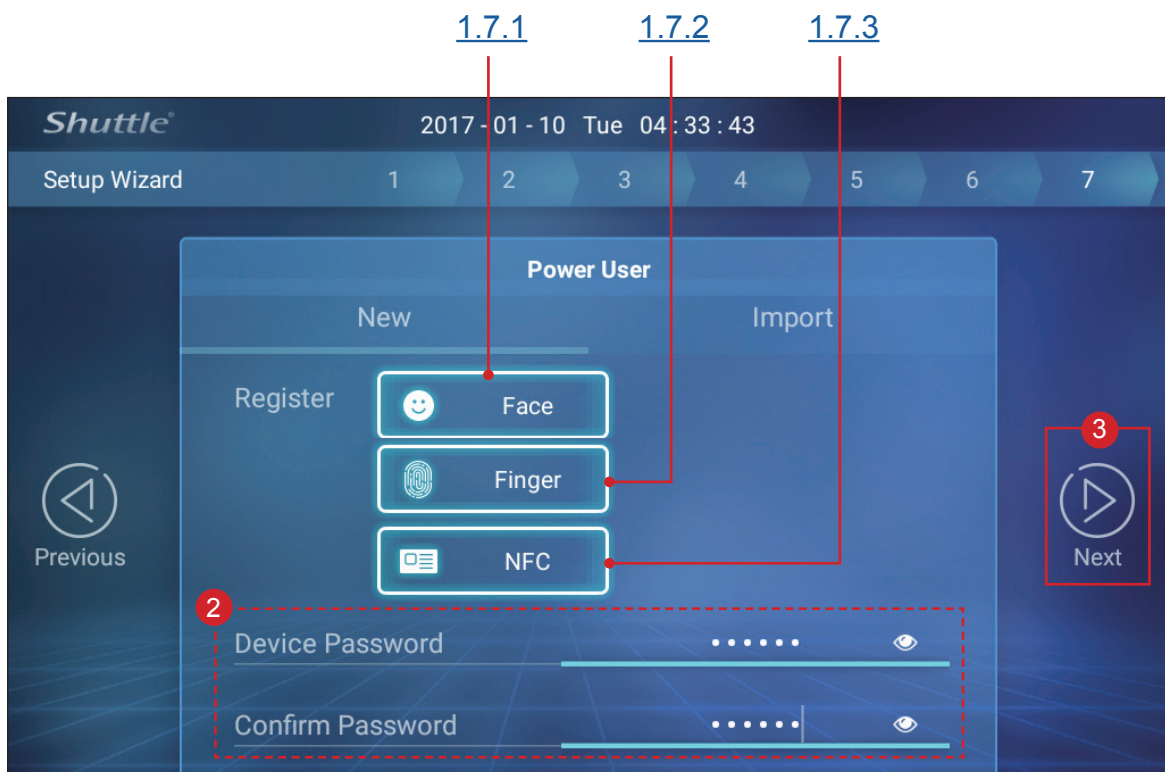




## 1.7 Create a Power User

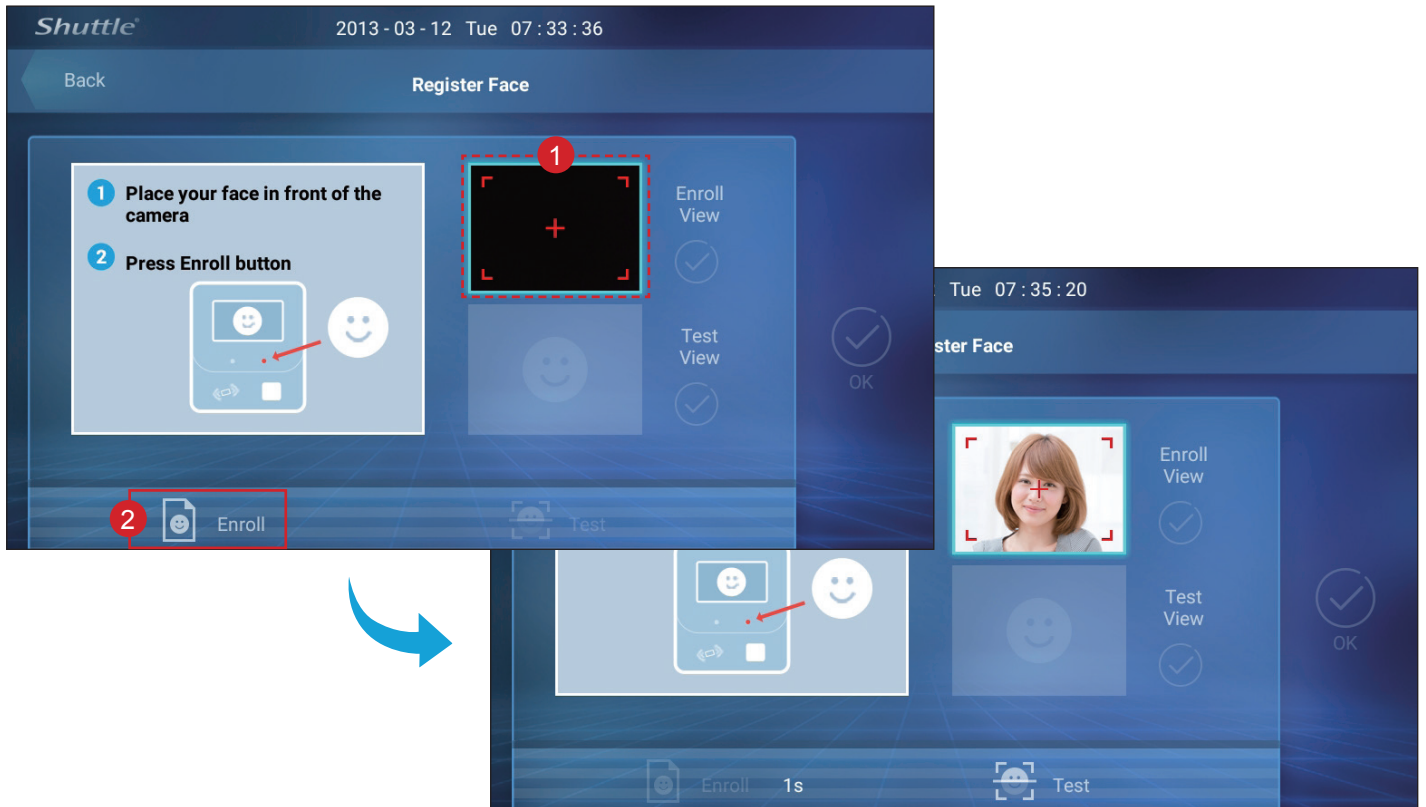
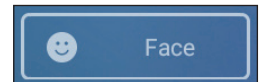
Power User can perform any administrative task on BR06S.

1. Complete the biological characteristics you require.
2. Enter device password and confirm password fields.
3. Press “**Next**” button to continue to the next step.

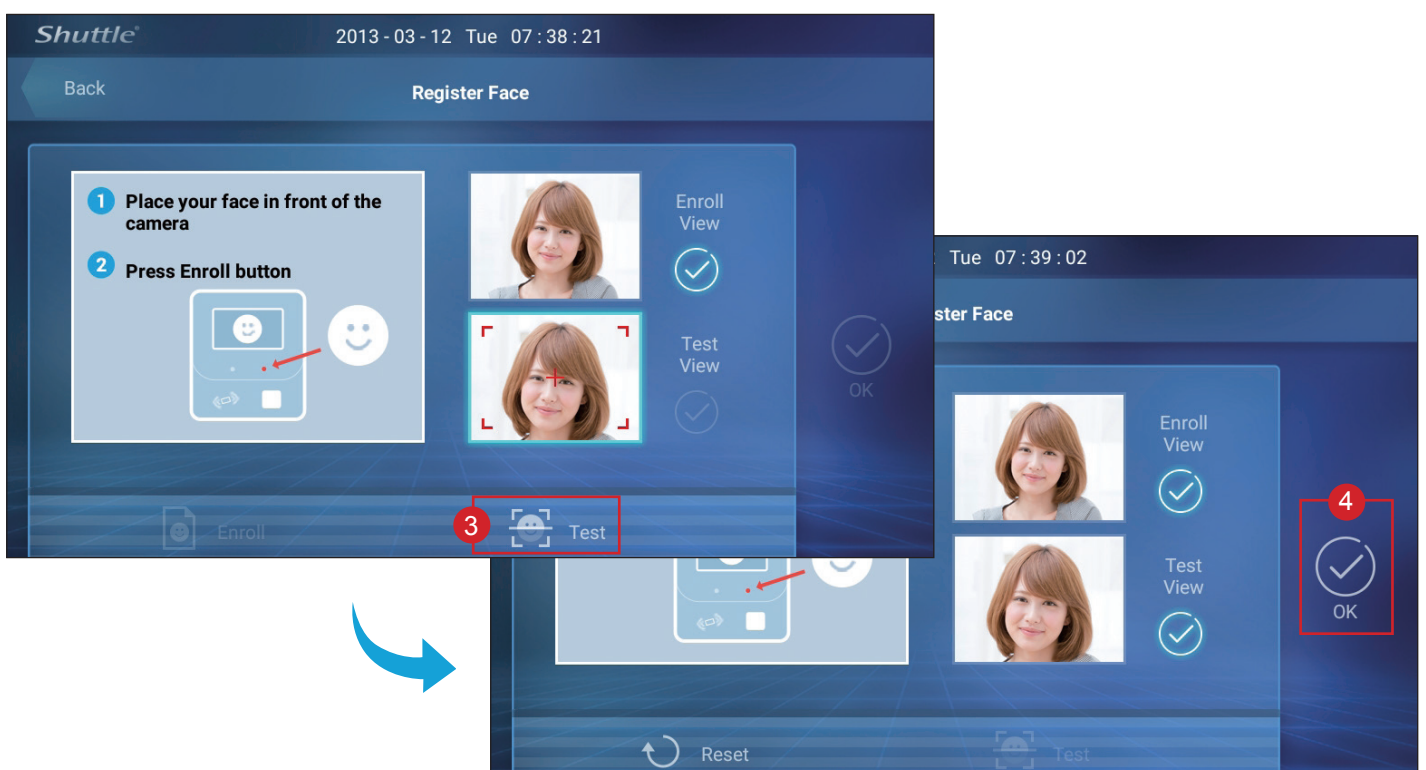


## 1.7.1 Register Face

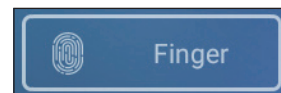
1. Place your face in front of the camera.
2. Press “**Enroll**” button.



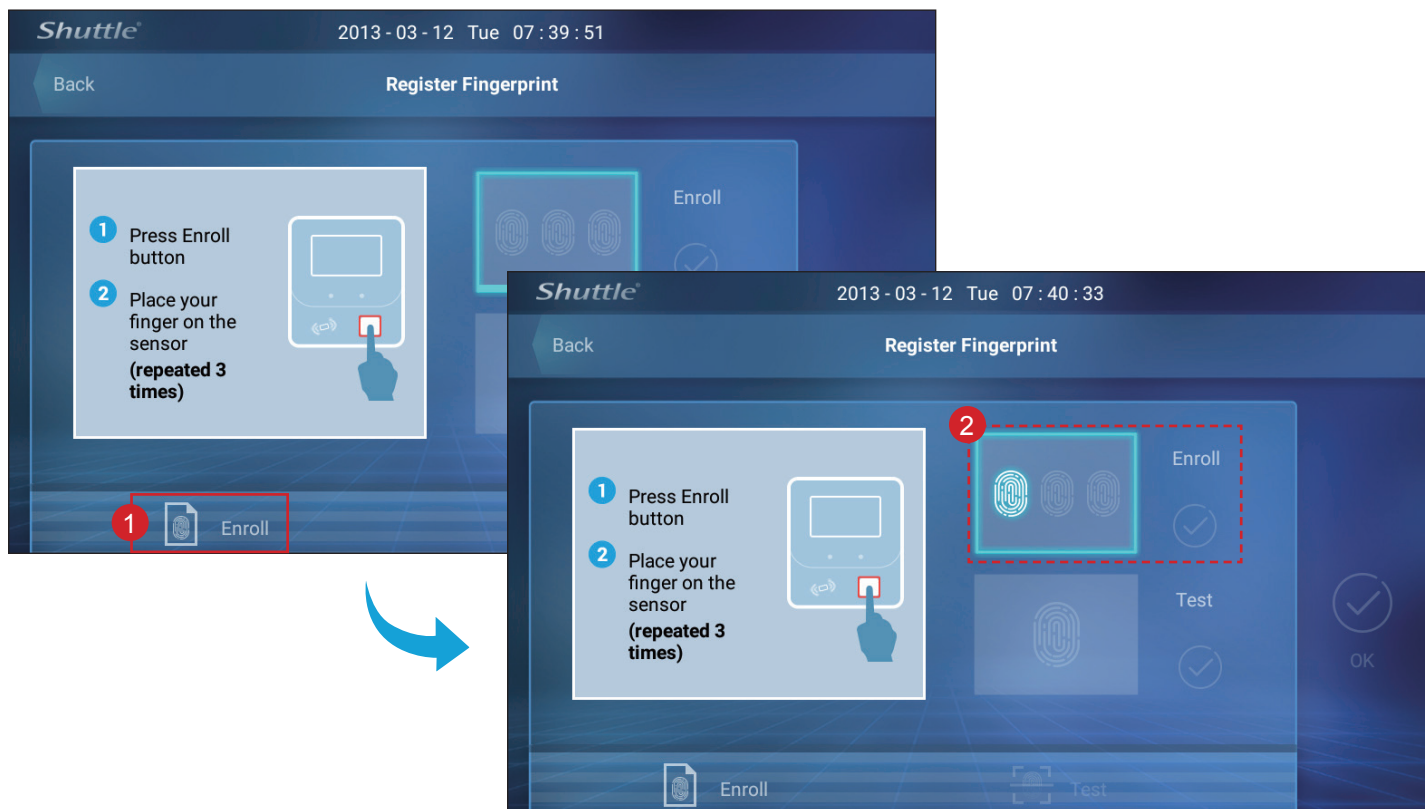
3. Press “**Test**” button.
4. Press “**OK**” button to continue to the next step.



### 1.7.2 Register Fingerprint



1. Press “**Enroll**” button.
2. Place your finger on the sensor and repeated 3 times.



3. Press “**Test**” button.
4. Press “**OK**” button to continue to the next step.

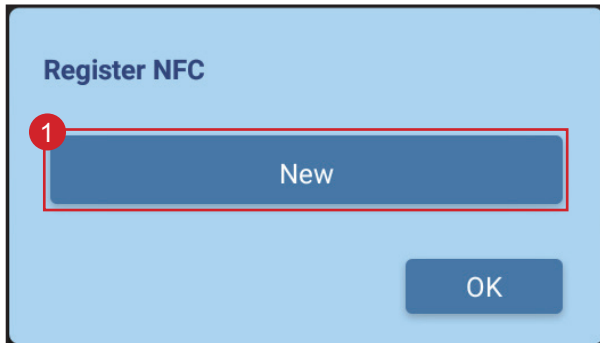




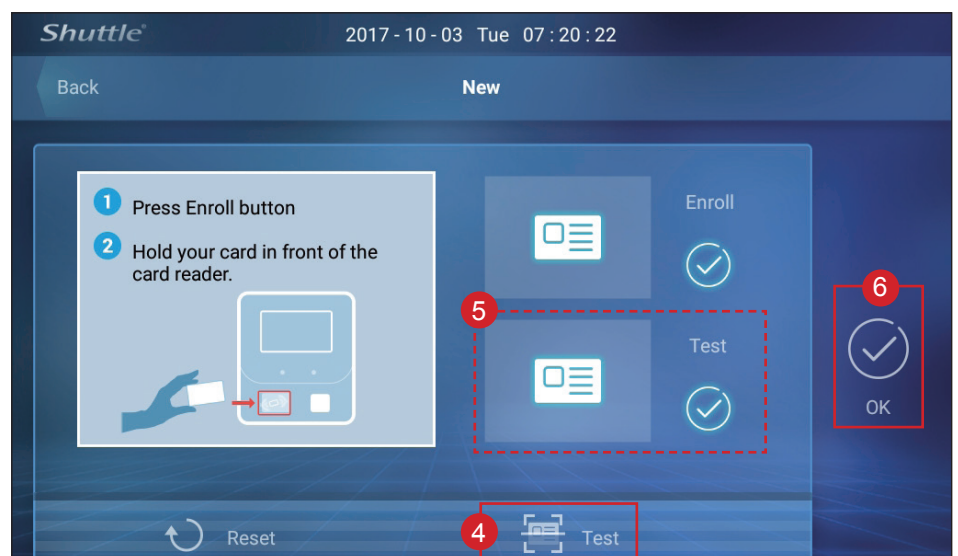
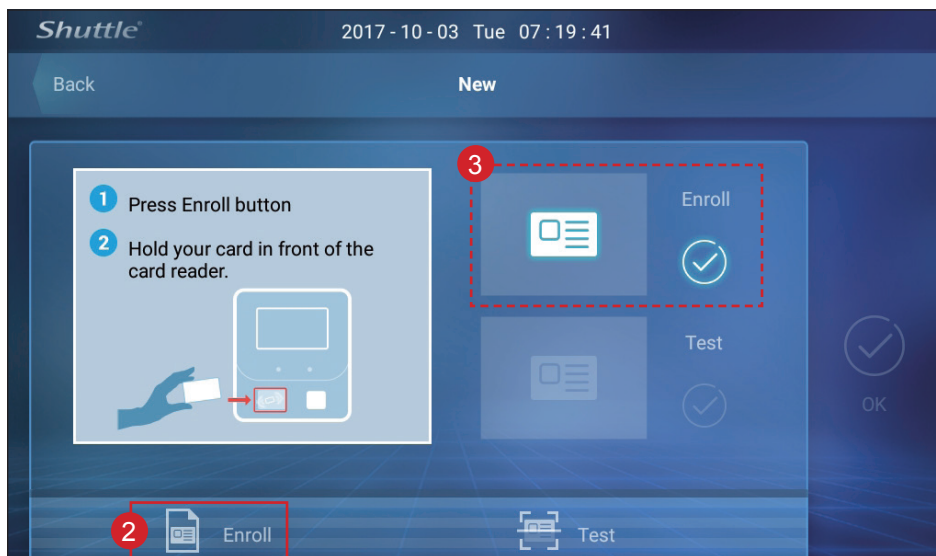
### 1.7.3 Register NFC



1. Press **"New"** button.



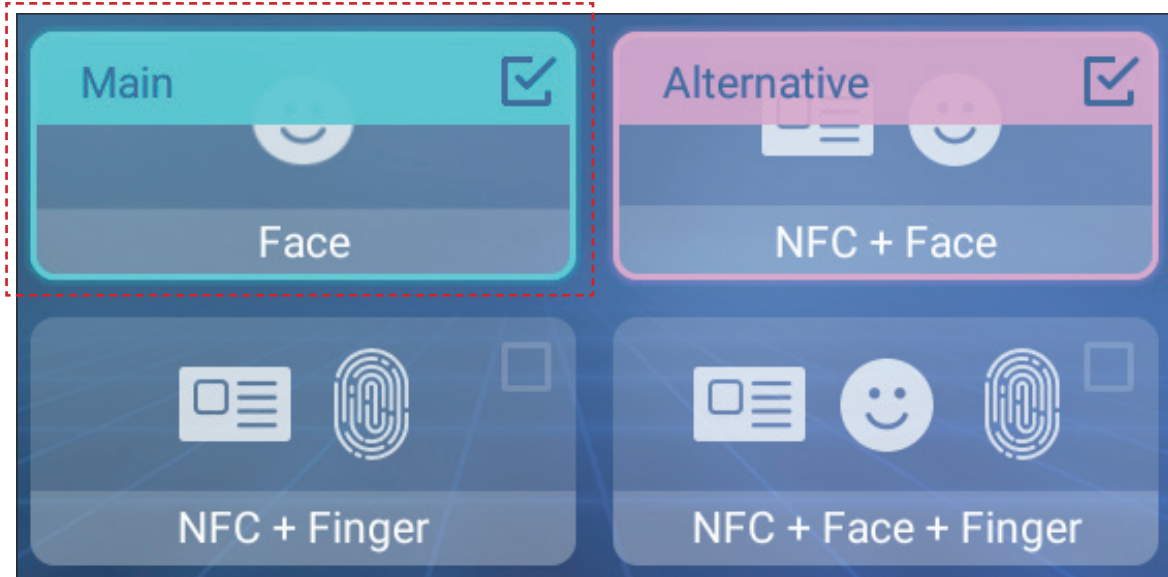
2. Press **"Enroll"** button.
3. Hold your card in front of the card reader.
4. Press **"Test"** button.
5. Hold your card in front of the card reader again.
6. Press **"OK"** button to continue to the next step.






## Enter BR06S

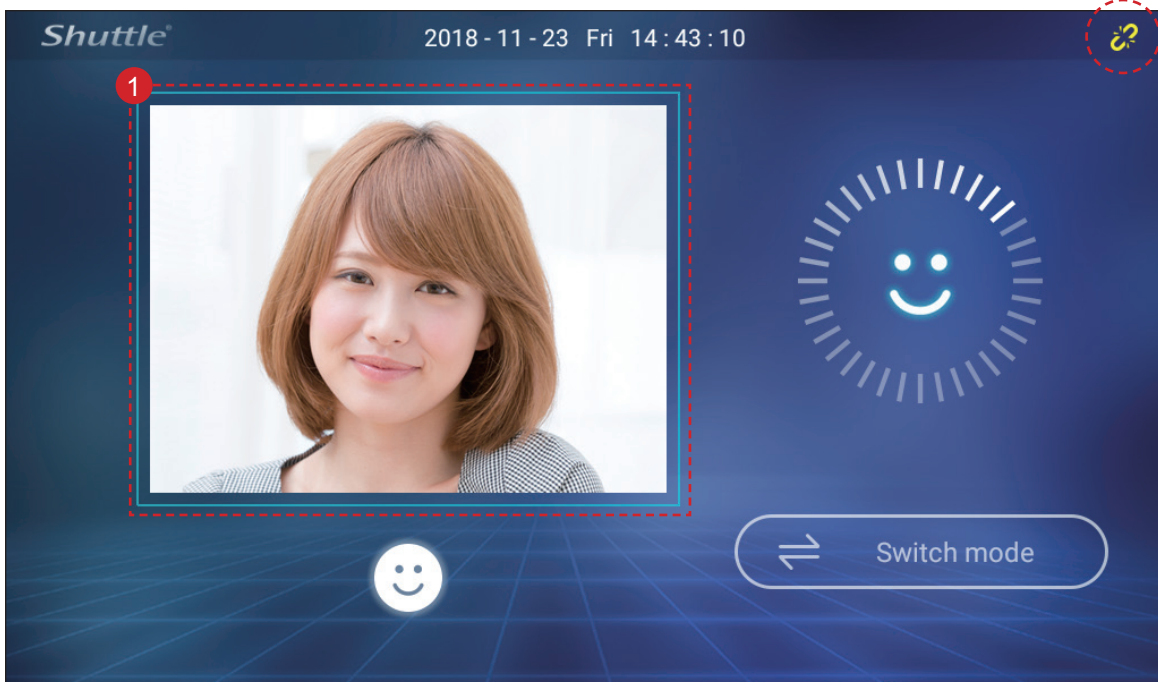
Following the register mode (identification mode) you choose.

**For Example: Face mode**



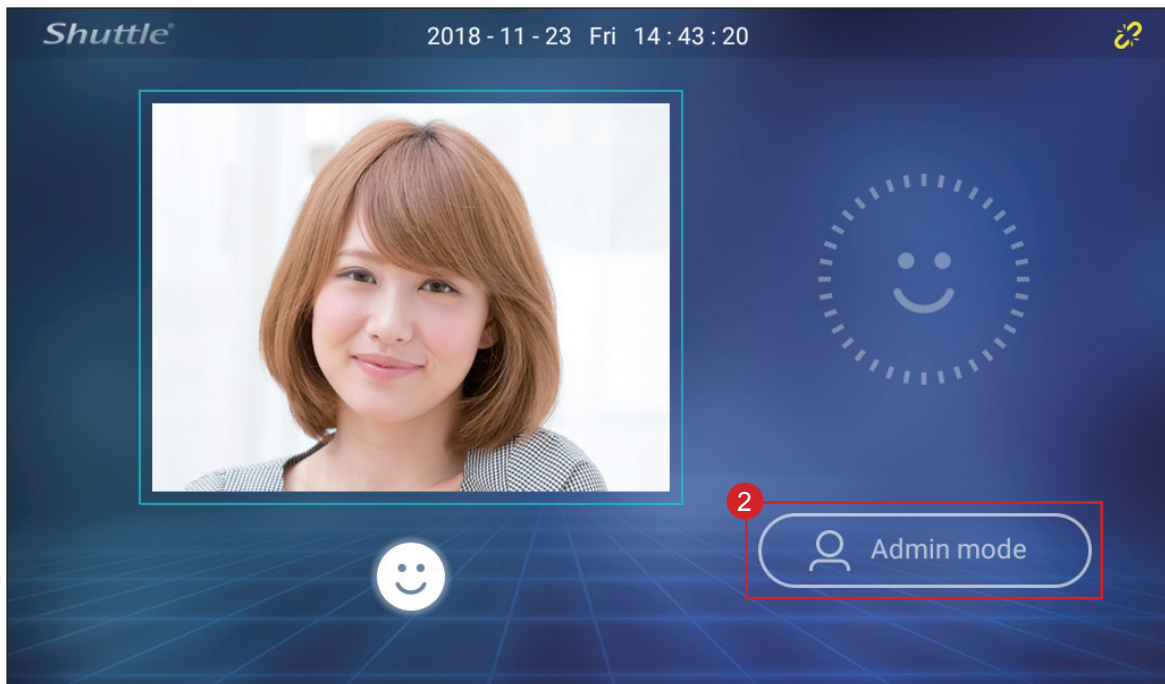
 Network status:  
 connecting  
 disconnecting

1. Place your face in front of the camera.



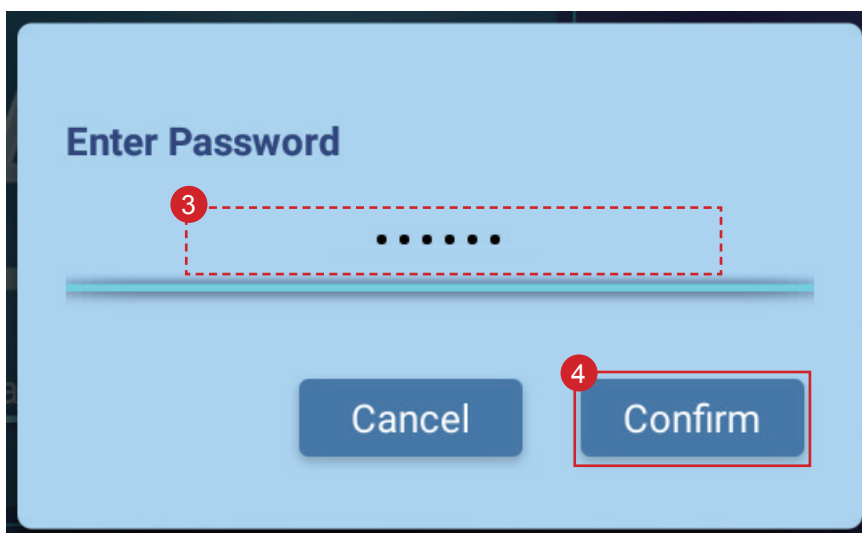


2. Press “**Admin mode**” button. (Power User Only)



3. Enter Password. (Power User Only)

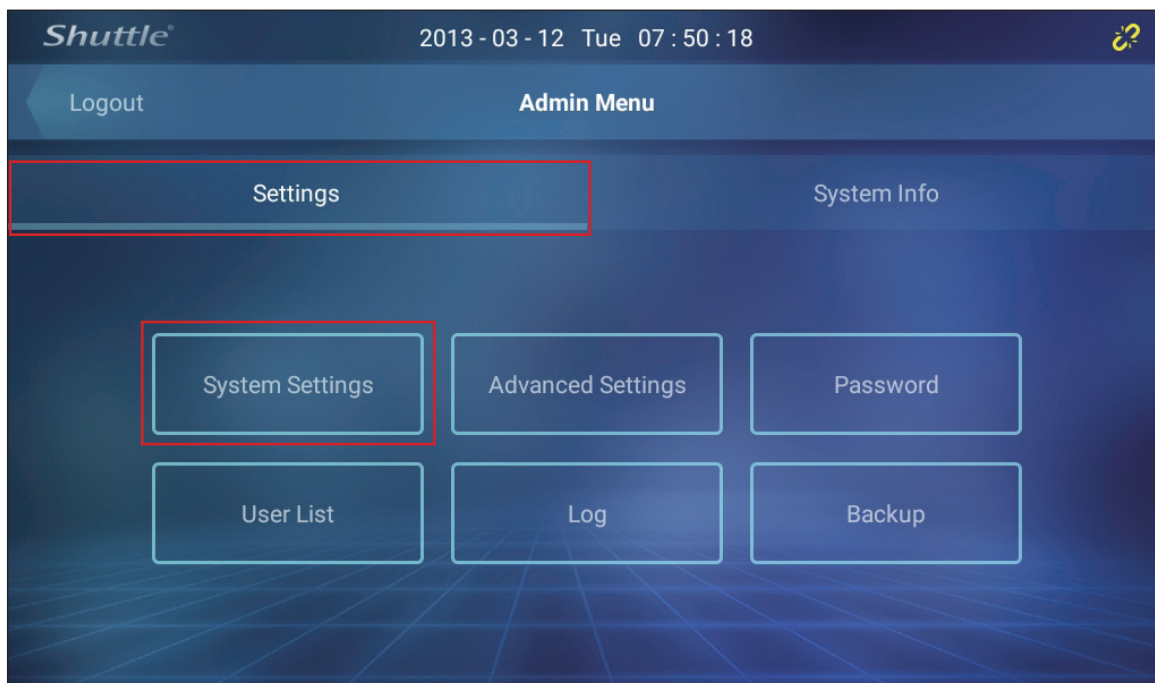
4. Press “**Confirm**” button to continue to the next step. (Power User Only)



## Admin Menu

### 3.1 Settings

#### 3.1.1 System Settings



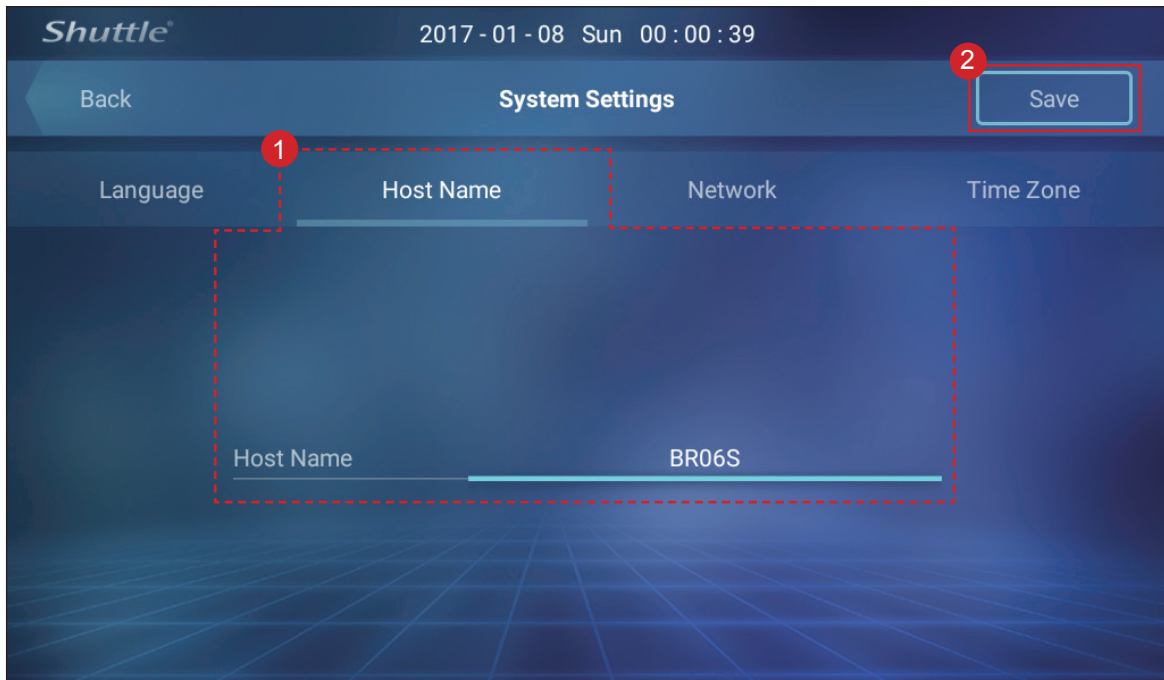
##### 3.1.1.1 Language

1. Choose your language.
2. Press “**Save**” button to continue to the next step.



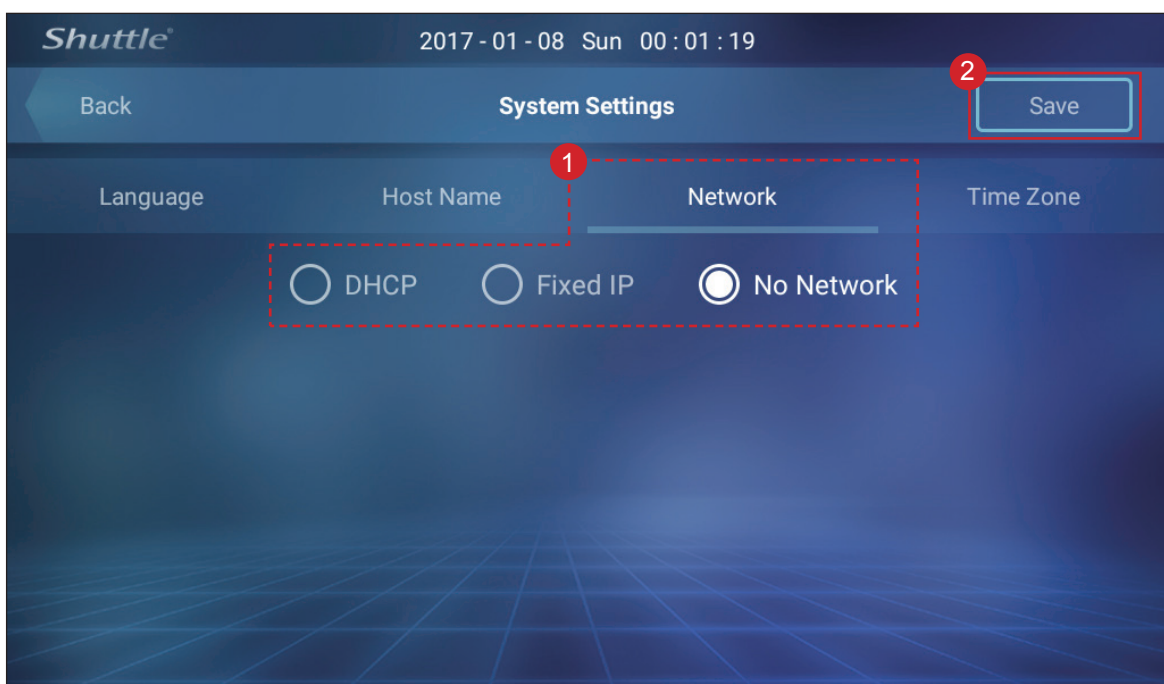
### 3.1.1.2 Host Name

1. Enter Host Name.
2. Press “**Save**” button to continue to the next step.



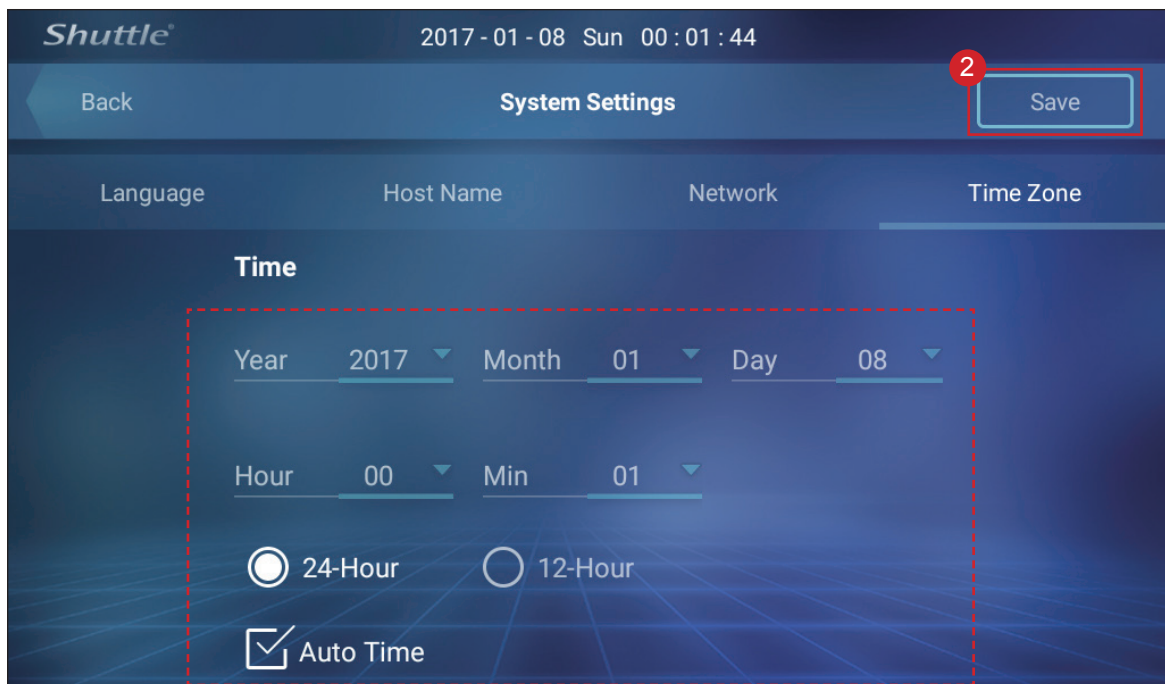
### 3.1.1.3 Network

1. Choose a Network type. (follow same steps as [1.4 Network](#))
2. Press “**Save**” button to continue to the next step.



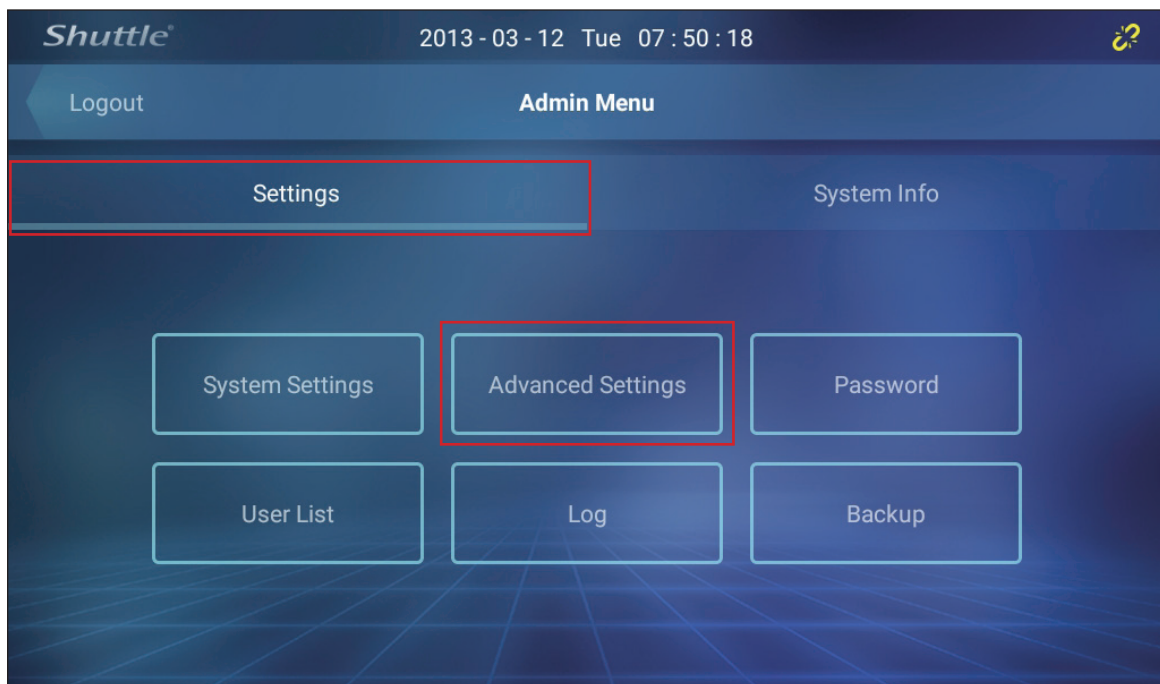
### 3.1.1.4 Time Zone

1. Select the Time Zone.
2. Press “**Save**” button to continue to the next step.





### 3.1.2 Advanced Settings



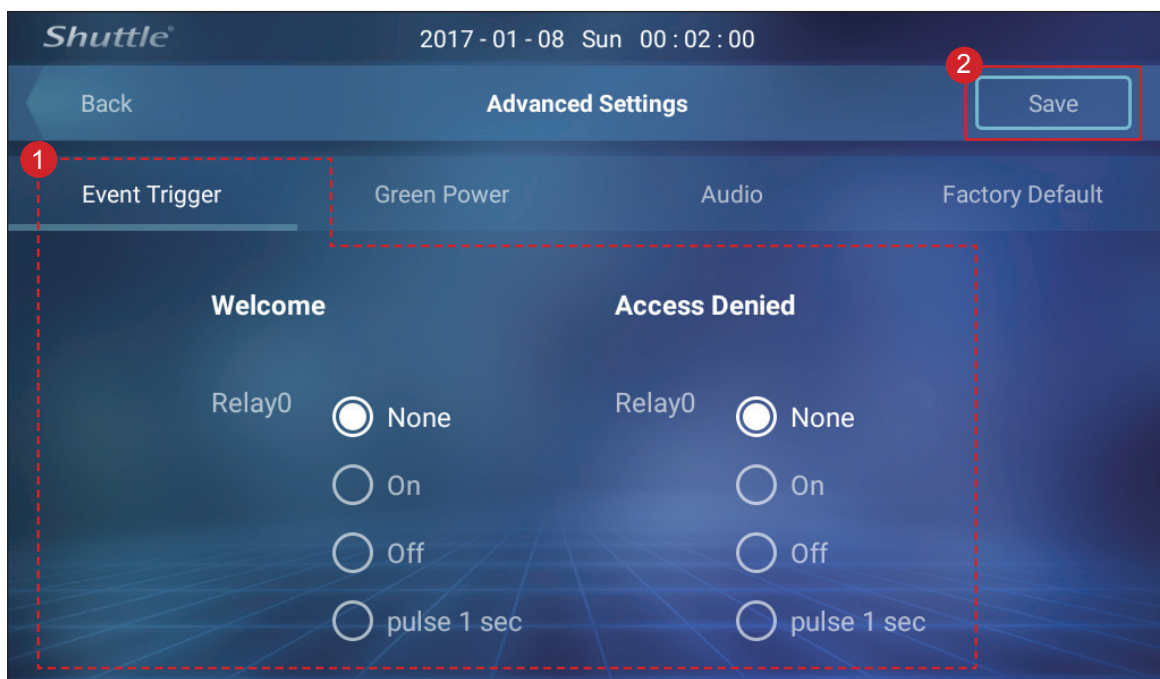
#### 3.1.2.1 Event Trigger

“Login successful” or “Login failed” actions appear.

e.g.: “Login successful”: Welcome -> Trigger the relay0 and relay1’s setting.

“Login failed”: Access Denied -> Trigger the relay0 and relay1’s setting.

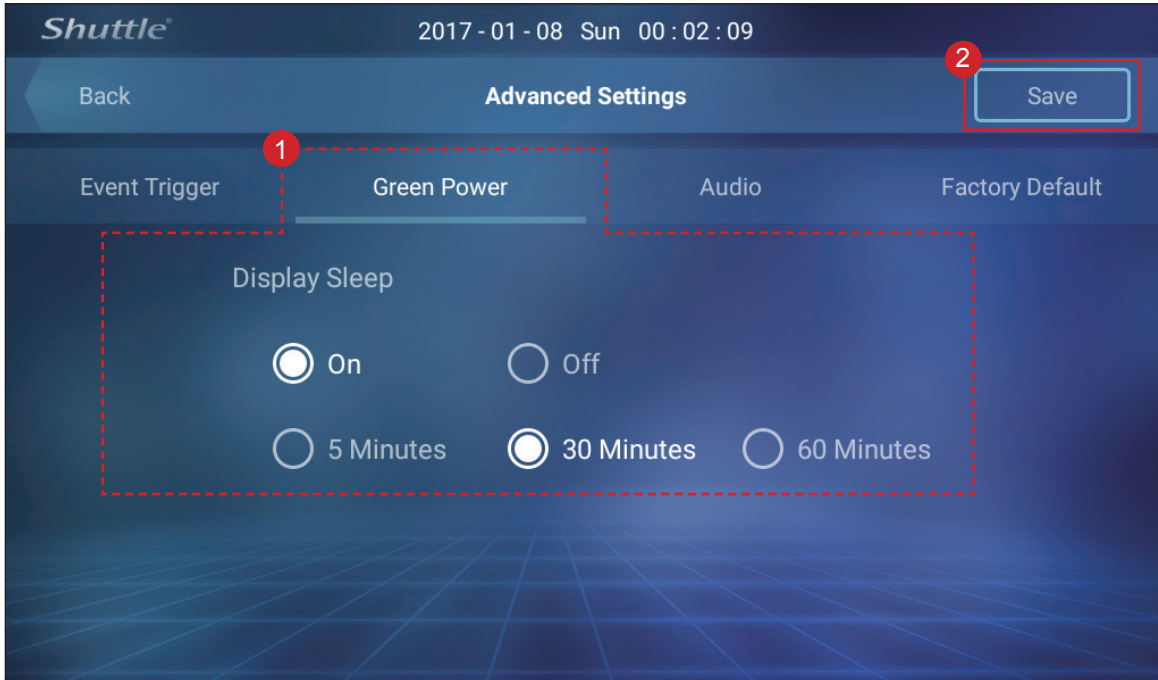
1. Choose the Relay(s) you require.
2. Press “**Save**” button to continue to the next step.





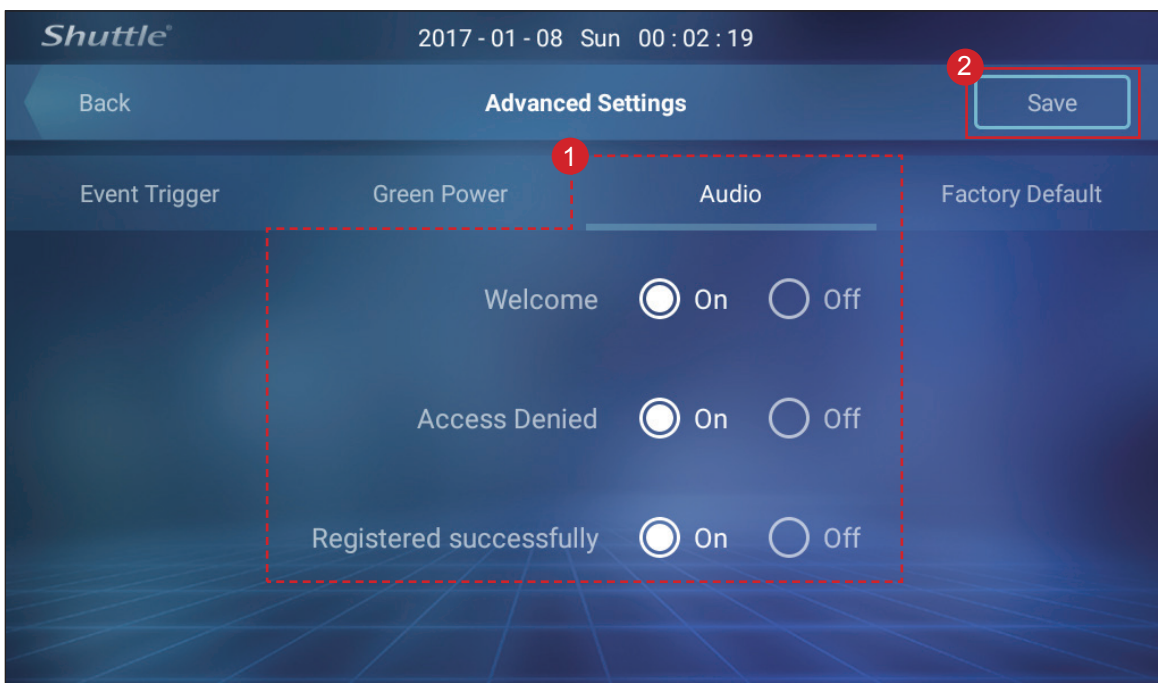
### 3.1.2.2 Green Power

1. Choose the settings you require.
2. Press “**Save**” button to continue to the next step.



### 3.1.2.3 Audio

1. Choose the settings you require.
2. Press “**Save**” button to continue to the next step.



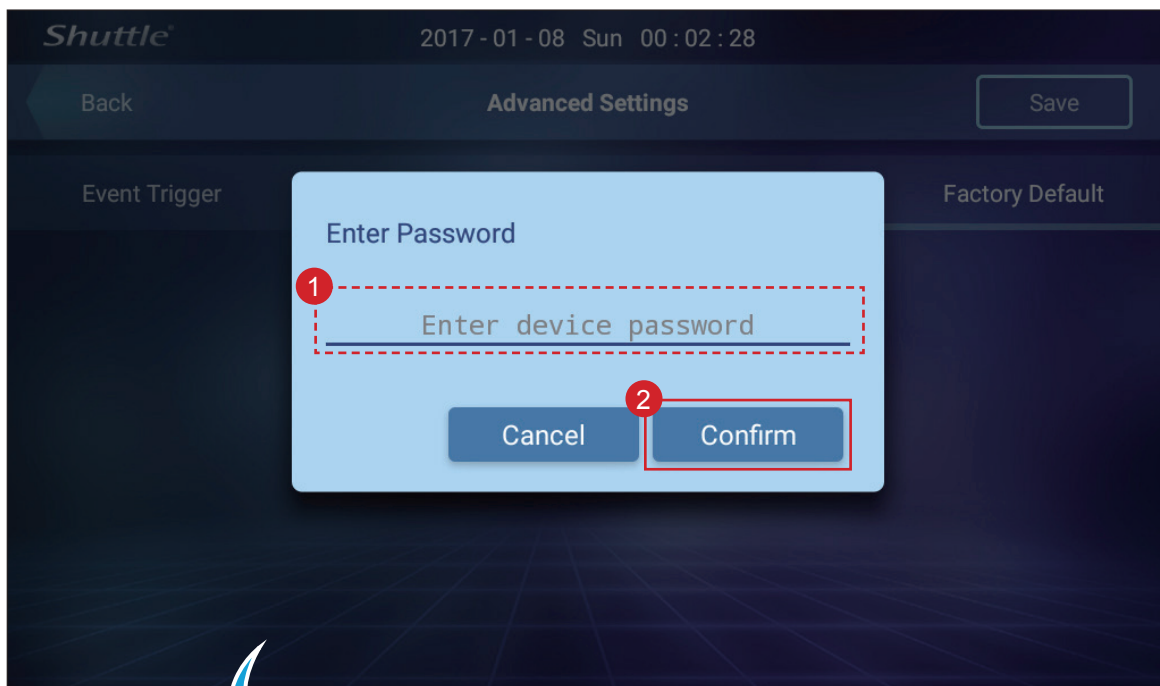
### 3.1.2.4 Factory Default



#### Important!

Reset to default settings. All of user data will be deleted, include biometric authentication.

1. Enter Password.
2. Press “**Confirm**” button to continue to the next step.

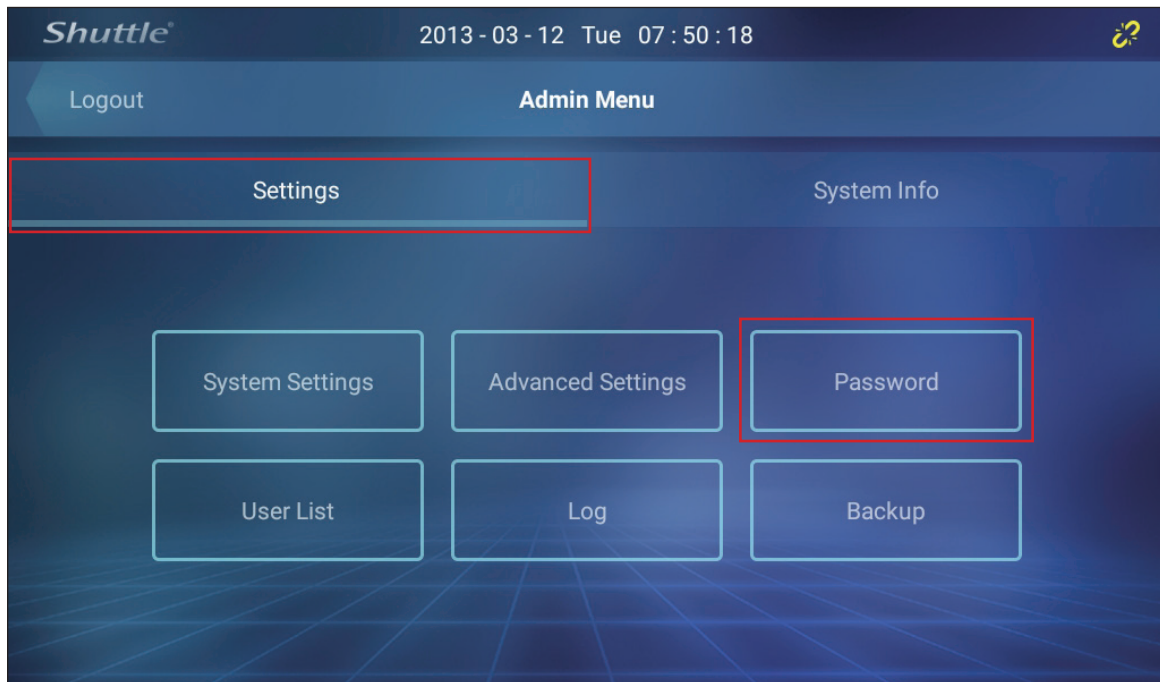


Reset to default settings.  
All of user data will be deleted, include  
biometric authentication.

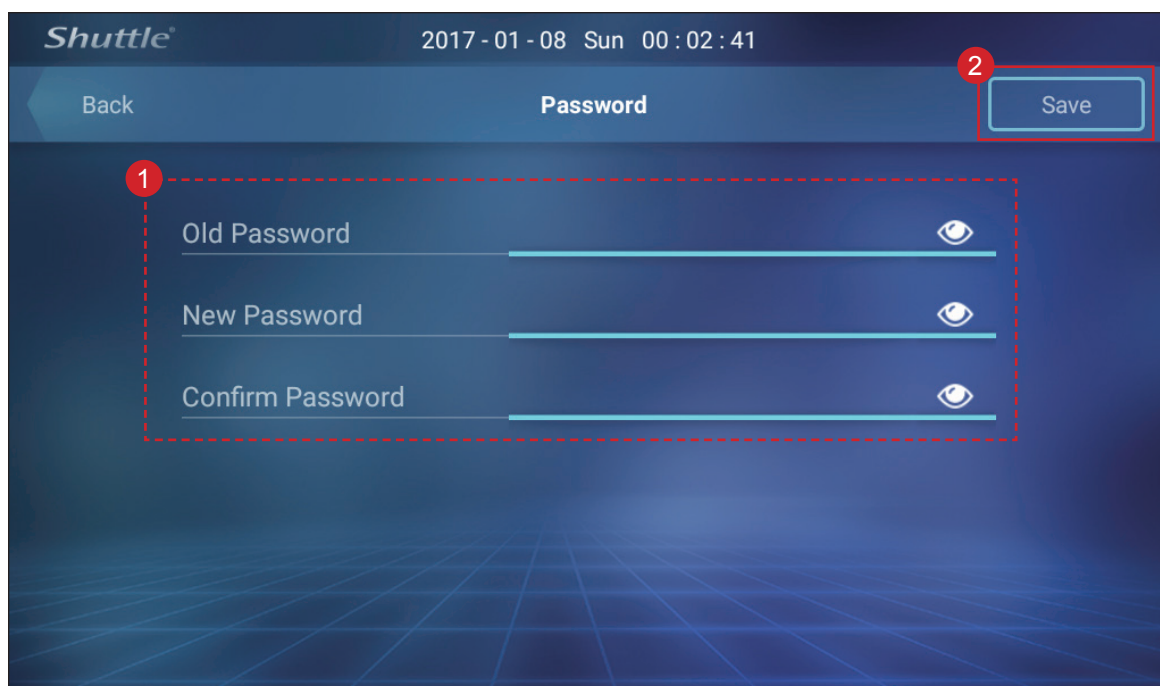
Cancel

Confirm

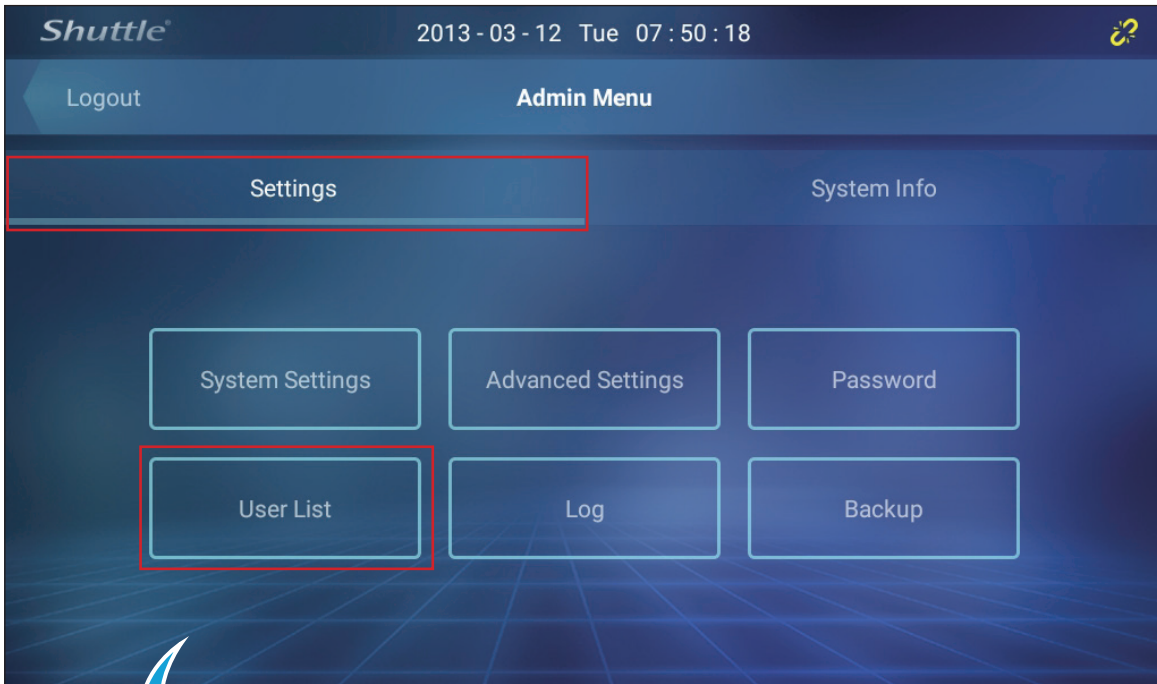
### 3.1.3 Password



1. Enter Password.
2. Press “**Save**” button to continue to the next step.



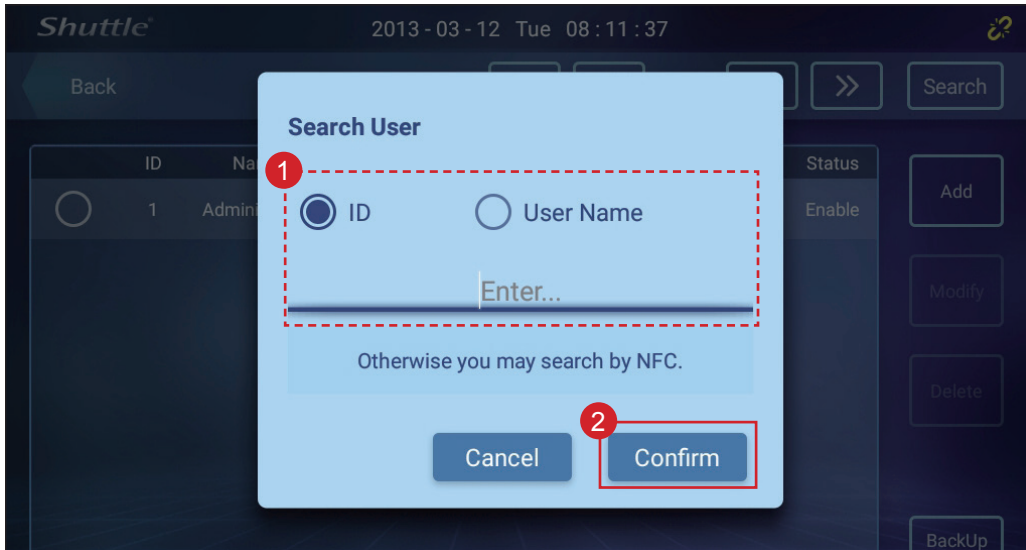
### 3.1.4 User List





### 3.1.4.1 Search

1. Enter ID or User Name.
2. Press “**Confirm**” button.



### 3.1.4.2 Add User

**⚠ Note: Supports 3000 accounts per BR06S.**

1. Enter ID and Name.
2. Choose Role type and Status.
3. Complete the biological characteristics you require.  
(follow same steps as [1.7 Create a Power User](#))
4. Press “**Add**” button to continue to the next step.

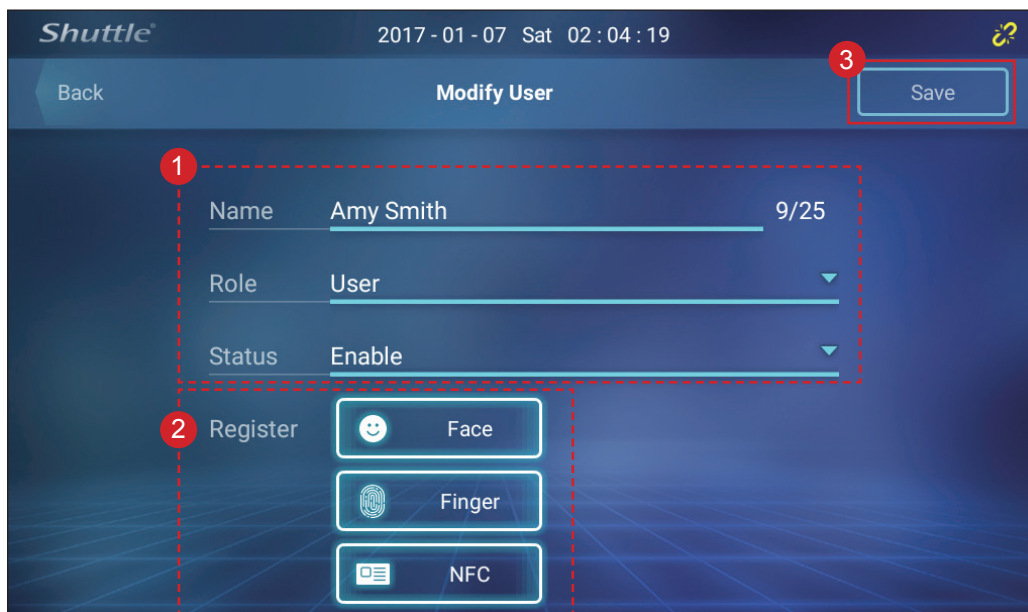




### 3.1.4.3 Modify User

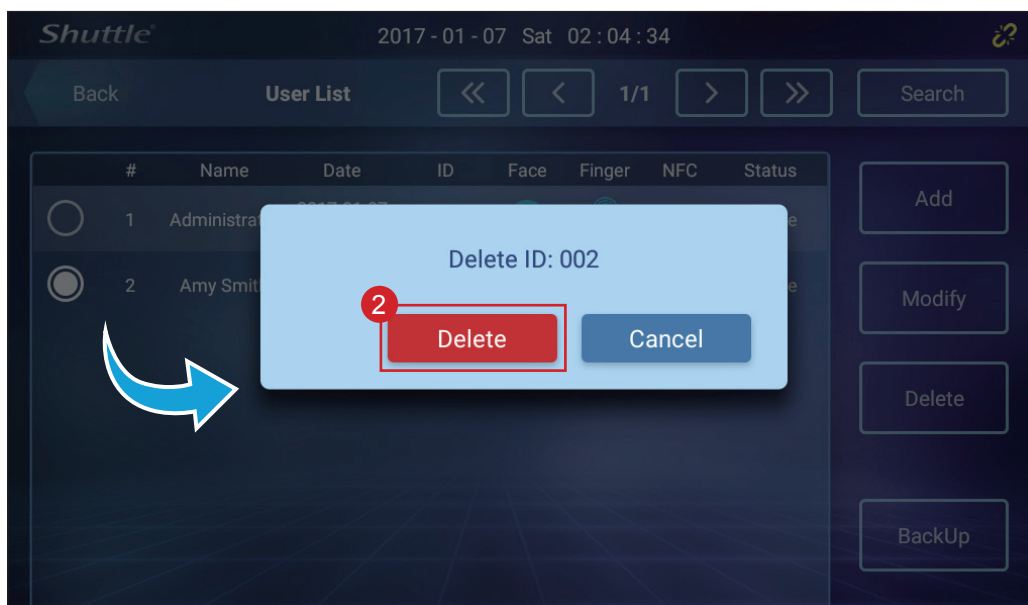
Power User can modify exist User Name, Role and Status and biological characteristics.

1. To modify exist User Name, Role and Status.
2. Press the biological characteristics you require.  
Complete the biological characteristics you require.  
(follow same steps as [1.7 Create a Power User](#))
3. Press “**Save**” button to continue to the next step.



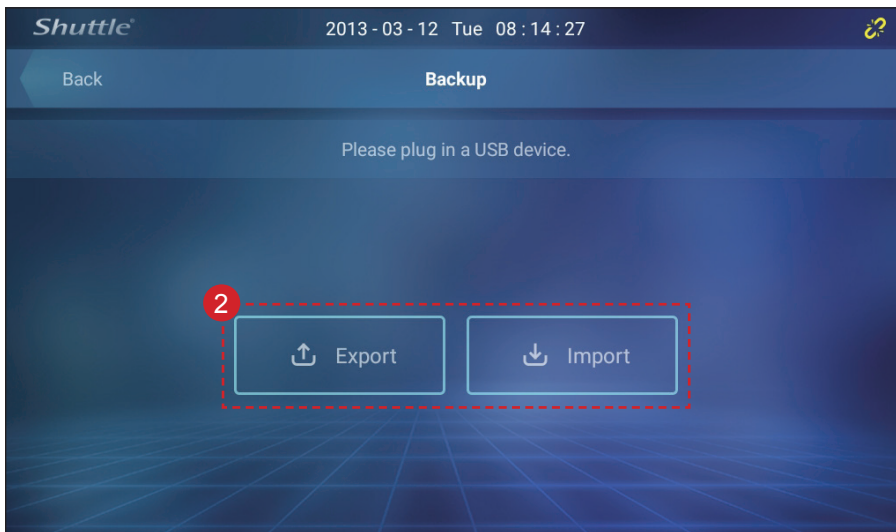
### 3.1.4.4 Delete User

1. Choose a Name you require.
2. Press “**Delete**” button.

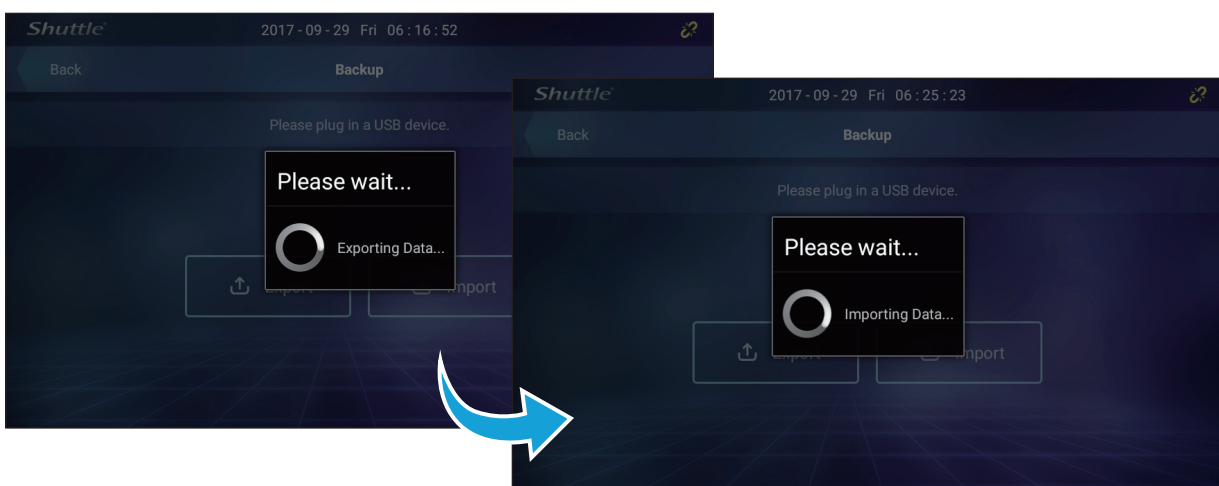
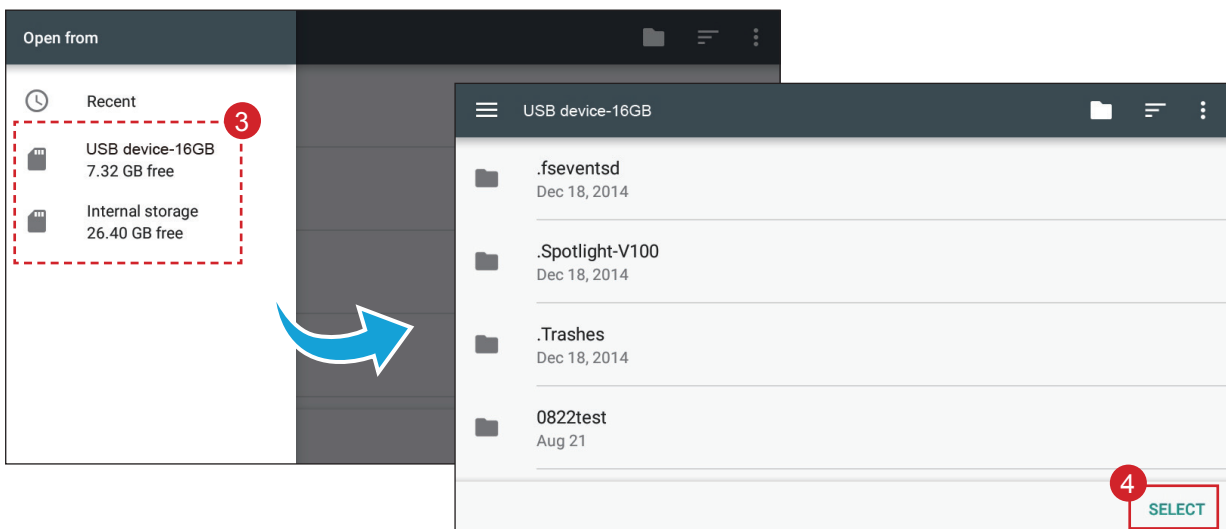


### 3.1.4.5 Backup

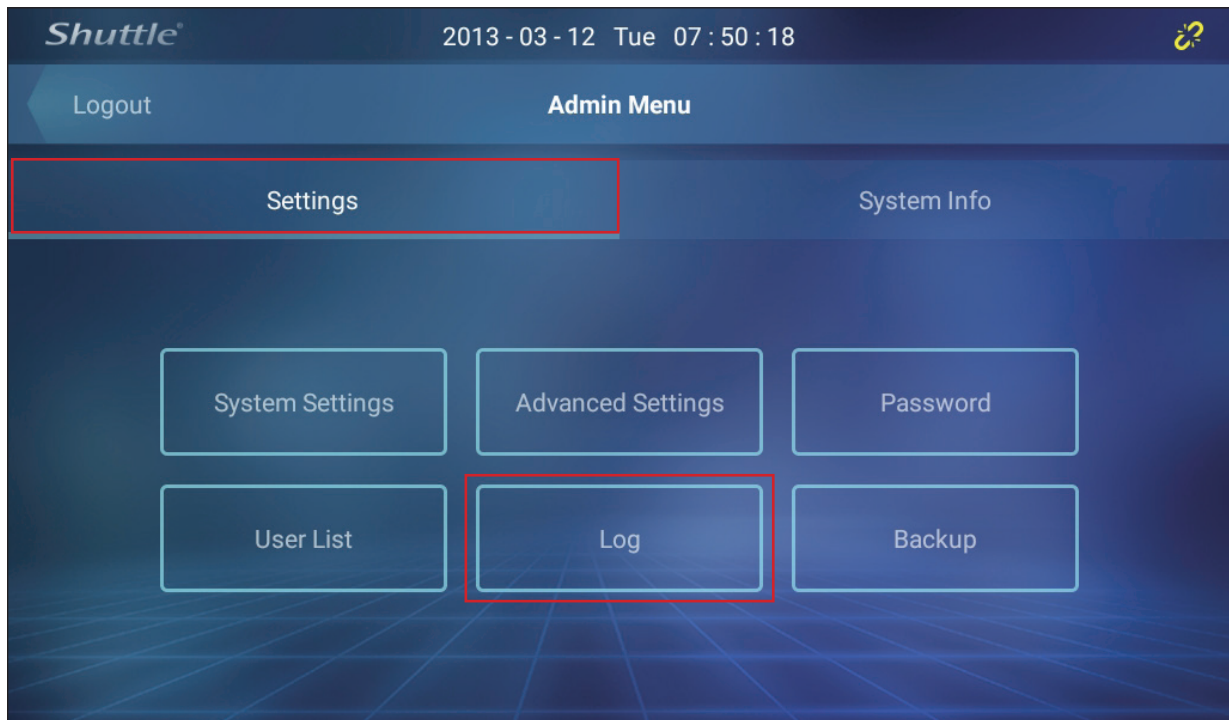
1. Plug in a USB device.
2. Choose “**Export**” or “**Import**” button.



3. Choose your USB device.
4. Press “**SELECT**” button.

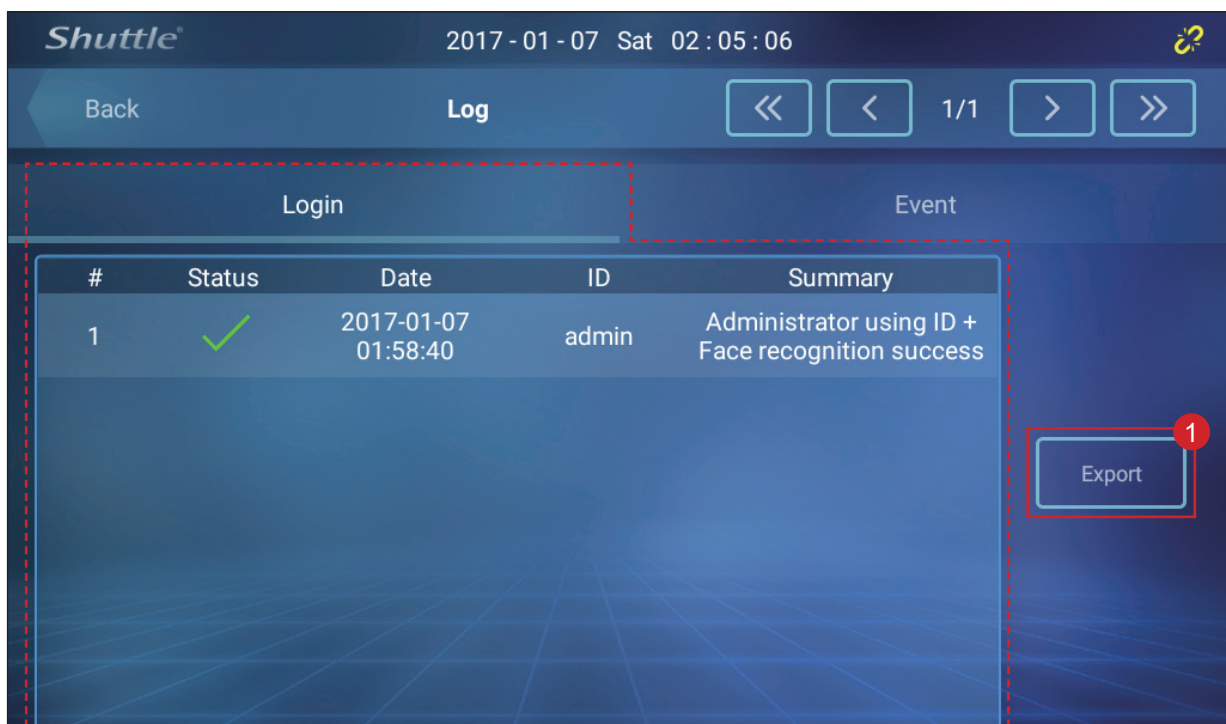


### 3.1.5 Log



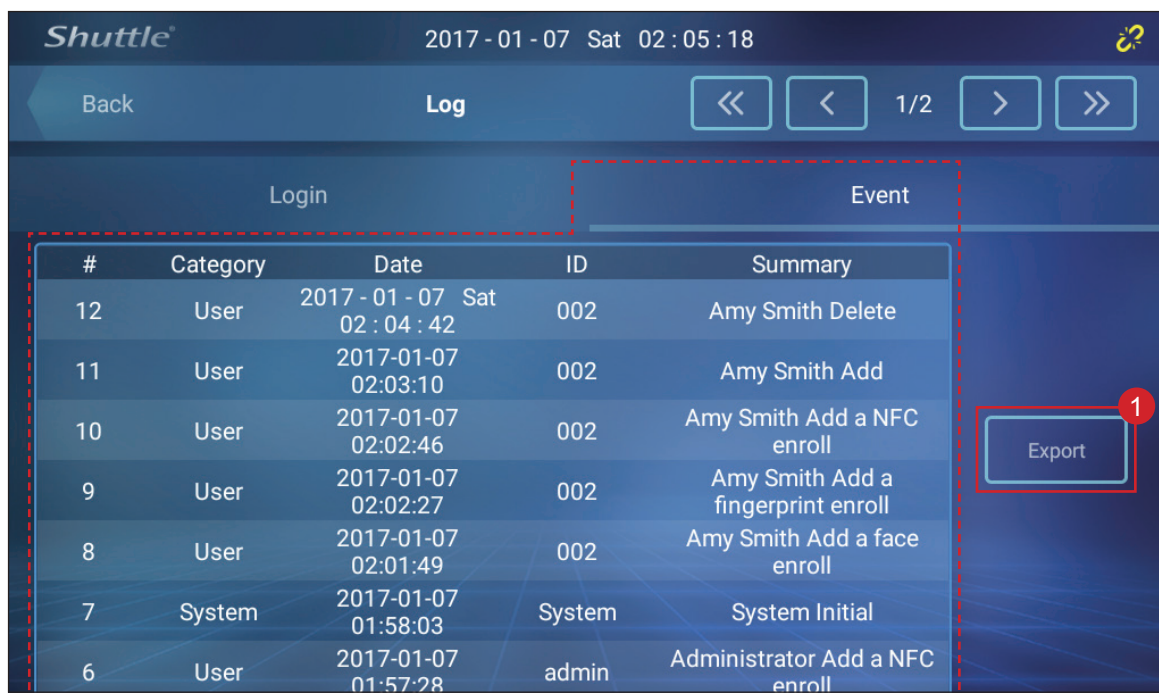
#### 3.1.5.1 Login

1. Press "**Export**" button to export login datas.



## 3.1.5.2 Event

1. Press “**Export**” button to export event datas.

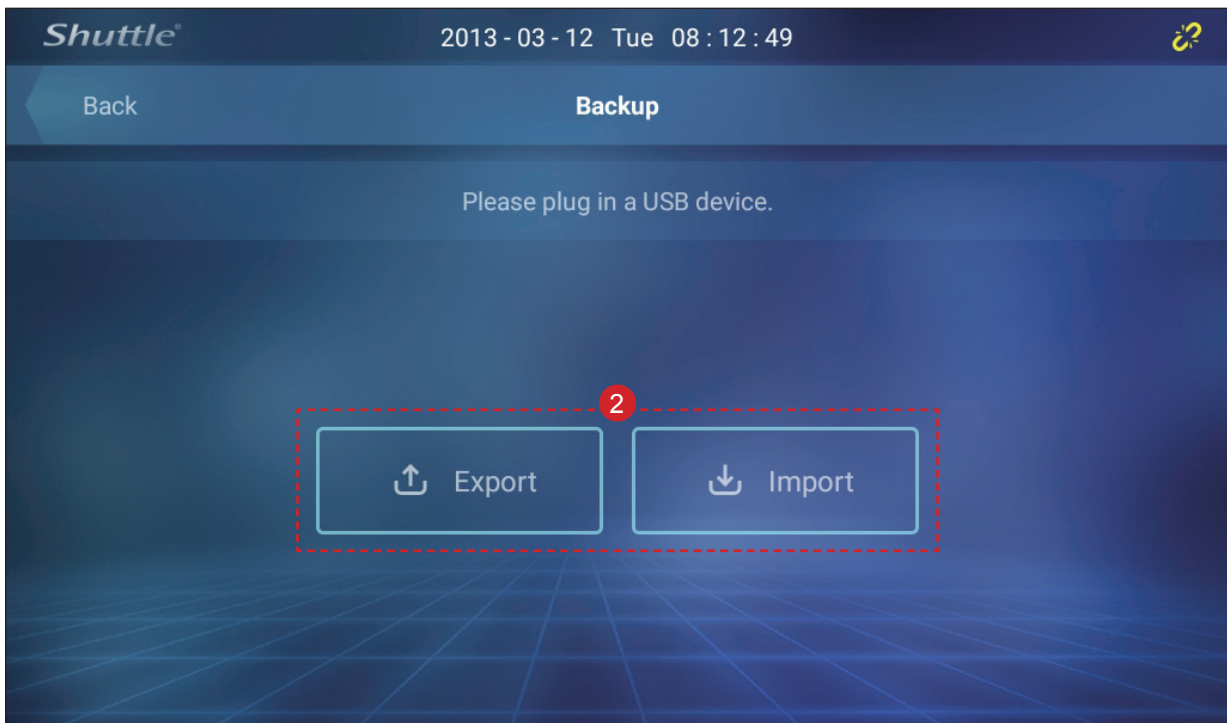


## 3.1.6 Backup





1. Plug in a USB device.
2. Choose “**Export**” or “**Import**” button. (follow same steps as [3.1.4.5 Backup](#))



## 3.2 System Info







**Shuttle Inc.**

<http://global.shuttle.com>

Department E-mail Contacts:

Sales: [sales@tw.shuttle.com](mailto:sales@tw.shuttle.com)

Technical Support E-mail: [support@tw.shuttle.com](mailto:support@tw.shuttle.com)

Media Contact: [shuttlepr@tw.shuttle.com](mailto:shuttlepr@tw.shuttle.com)