

### Unleash the power of your individual Gaming PCs

The Shuttle XPC P2 3500PA is built upon Intel's high performance 35 Express chipset and comes with the Intel Core 2 Duo E8400 processor. With four Gigabytes of DDR2-800 RAM in dual channel mode, this small form factor PC is designed to tackle demanding applications. The modern PCI Express graphics card NVIDIA GeForce 9600GT promises smooth and high-resolution images from the latest 3D games, and the 500GB SATA2 hard disk offers more than enough space for videos, photos, music and software. Every fully configured system from Shuttle comes with a 24 month Pick-up and Return service.

### Shuttle XPC P2 3500PA



#### Feature Highlight

Category	<ul style="list-style-type: none"> <li>Gaming</li> </ul>
Shuttle XPC	<ul style="list-style-type: none"> <li>Based on Shuttle XPC Barebone SP35P2</li> </ul>
OS	<ul style="list-style-type: none"> <li>Microsoft Vista Home Premium</li> </ul>
Processor	<ul style="list-style-type: none"> <li>Intel Core 2 Duo E8400, Socket 775, 3 GHz, 1333MHz FSB, 2x3MB Cache, 45nm</li> </ul>
Memory	<ul style="list-style-type: none"> <li>4 GB DDR2-800, supports Dual Channel</li> </ul>
Graphics	<ul style="list-style-type: none"> <li>NVIDIA GeForce 9600GT, 512MB GDDR3</li> </ul>
Audio	<ul style="list-style-type: none"> <li>8-ch Audio with SPDIF in/out</li> </ul>
LAN	<ul style="list-style-type: none"> <li>Gigabit Ethernet LAN (1000 Mbit/s)</li> </ul>
Drives	<ul style="list-style-type: none"> <li>DVD Writer, Dual Layer</li> <li>500GB Serial ATA hard disk</li> <li>25-in-1 card reader</li> </ul>
Warranty	<ul style="list-style-type: none"> <li>24 months Pick-up and Return Service</li> </ul>
PSU	<ul style="list-style-type: none"> <li>SilentX 400W Power Supply, 80 PLUS</li> </ul>



Photos for illustration only.

Product ID: P2 3500PA



The configuration of the Shuttle XPC P2 3500PA is only one of several configurations available of the Shuttle XPC P2 3500P series. Please refer to the **Shuttle Systems Configurator** ([sys.eu.shuttle.com](http://sys.eu.shuttle.com)) to see the full range of other possible built-to-order (BTO) systems.

## Shuttle XPC P2 3500PA – Special Product Features



### Shuttle XPC Prima Series offering extreme performance

Shuttle has introduced the XPC Prima series, with its revolutionary high performance models, for professional and performance demanding applications whether they be at work, everyday or for high-tech gaming.

### Core 2 Duo with 45nm technology

This Shuttle product is equipped with the Intel® Core™ 2 Duo 8400 processor with 3 GHz core clock frequency and 1333 MHz front side bus. This model is already manufactured with the new 45nm process technology. Multi core brings multi power!

### OASIS Cooling Technology

The newly designed OASIS cooling technology deliver a unique system of heat-sinks covering the MOSFET modules, the north bridge as well as the south bridge that effectively dissipates heat without the use of fans. Featuring an all-new Heat pipe design, Shuttle OASIS allows users to enjoy longer component lifetime through lower temperatures, added system stability and silent operation.

### 80 PLUS® Certified Power Supplies

The 80 PLUS® performance specification requires power supplies in computers and servers to be 80% or greater energy-efficient.

### User Friendly Dynamic OverClock feature\*)

The user can easily overclock the system through the bios from 3%,5%,7%, to 10%.

### New Era of All-Solid Capacitor Shuttle Mainboards

By using all-solid capacitors Shuttle mainboards provide industry leading stability, reliability and longevity for PC gaming and entertainment systems. The average lifespan for a solid capacitor is more than six times greater than the more common and less expensive electrolytic capacitors.

### Windows Vista Home Premium

Windows Vista Home Premium is a great choice for going beyond e-mail and web surfing to improve personal productivity and enjoy all kinds of digital entertainment. You can search for anything on your computer from virtually anywhere, so you'll save lots of time. You'll get improved performance and better protection for your PC, your personal information, and your family. You'll find more ways to have fun with your music, TV, games, and digital media.

#### \*) Overclocking Warning:

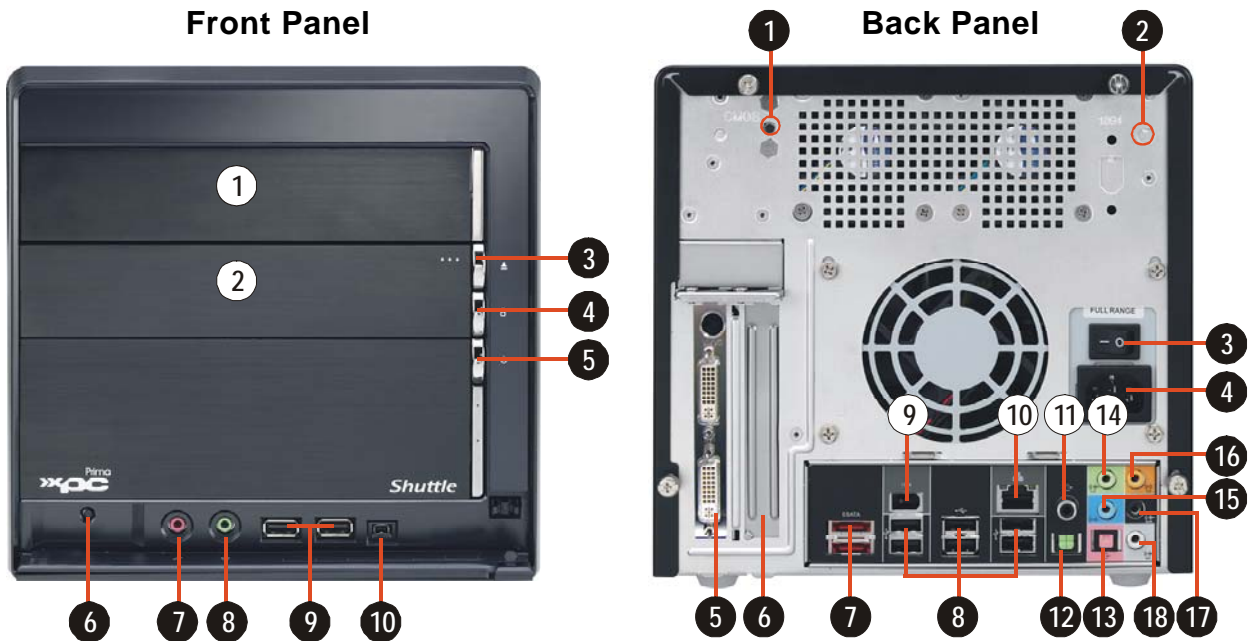
Please note there is a certain risk involved with overclocking, including adjusting the setting in the BIOS or using third-party overclocking tools. Overclocking may affect your system stability or even cause damage of the components and devices of your system. It is done at your own risk and expense. Shuttle cannot be held responsible for possible damage caused by overclocking.

## Shuttle XPC P2 3500PA Specifications

<i>Range of application</i>	Gaming
<i>Basis</i>	This system is based on the Shuttle XPC Barebone SP35P2
<i>Operating system</i>	Microsoft Windows Vista Home Premium (various versions available) 9 languages available: German, English, French, Dutch, Italian, Spanish, Swedish, Finnish, Danish
<i>Chassis</i>	Black P2-type aluminum chassis, stealthed drive doors Dimensions: 32.5 x 22 x 21 cm (LWH), net weight ca. 8 kg
<i>Processor</i>	Socket 775 mit Intel Core 2 Duo E8400 (3.0 GHz) processor 2x 3MB cache, 1333MHz FSB, 45nm technology (Wolfdale core)
<i>Silent X Cooling</i>	New Shuttle I.C.E. heat-pipe module (Integrated Cooling Engine) SilentX Cooling and Noise Reduction Technology advanced Heatpipe technology, linear fan control. 3 independent cooling areas. OASIS Cooling Technology: additional fanless heat-pipe design covering the MOSFET modules (VRM), north- and southbridge
<i>Chipset Capacitors</i>	Intel P35 Express (MCH, codename: Bearlake-X) + ICH9R (I/O Controller Hub) Solid Capacitors for excellent heat resistance for enhanced system durability
<i>Hard disk</i>	500GB Serial ATA II hard disk, supports up to 3 Gbit/s
<i>Optical drive</i>	DVD Writer, supports Dual Format and Dual Layer
<i>Memory</i>	4 GB DDR2-800 memory modules with 240 pins Supports Dual Channel
<i>Graphics</i>	NVIDIA GeForce 9600GT graphics card 512MB GDDR3 graphics memory (256 bit) PCI-Express x16 interface (V2.0) Supports Shader model 4.0, DirectX 10, OpenGL 2.1 Supports HDTV (HDCP) and MPEG2 acceleration Max. power consumption ca. 95W (full load) Resolution max. 2560x1600x32Bit at 60 Hz (Dual Link) Video outputs: 2x DVI-I, S-Video
<i>Audio</i>	7.1 channel High Definition Audio with Realtek ALC888 codec analog: line-out (8-ch), line-in, microphone, CD-in, AUX digital: optical S/PDIF-in, optical and coaxial S/PDIF-out

<b>LAN</b>	<p>Marvell 88E8056 Ethernet network controller with PCI Express interface</p> <p>IEEE 802.3u 1000Base-T compliant</p> <p>Supports 10 / 100 / 1.000 MBit/s operation</p> <p>Supports Wake-on-LAN</p>
<b>Card Reader</b>	<p>25-in-1 multi-format card reader (USB 2.0, 3.5" format)</p>
<b>Empty slots</b>	<p>1x PCI 32 bit slot</p>
<b>Front-panel I/O</b>	<p>Microphone</p> <p>Headphone (Line-out)</p> <p>2x USB 2.0</p> <p>Firewire (Mini 4 pin connector)</p> <p>Power button</p> <p>Reset button</p> <p>Power indicator (blue LED)</p> <p>HDD indicator (orange LED)</p>
<b>Back-panel I/O</b>	<p>2x DVI-I connectors (digital/analog)</p> <p>TV connector (S-Video/Composite)</p> <p>6x USB 2.0</p> <p>Firewire (6 pin)</p> <p>GigaBit LAN (RJ45)</p> <p>2x External Serial ATA Hotplug (eSATA)</p> <p>8-ch Audio line-out (2x rear/front, bass/center, surround/back)</p> <p>Audio Line-in, SPDIF: optical in/out, coaxial out</p> <p>CMOS button</p>
<b>Power supply</b>	<p>400 Watt ATX mini PSU, AC input voltage: 100~240V</p> <p>80 PLUS® certified (80% or greater energy-efficient)</p> <p>Dimensions: 85(W) x 83(H) x150(D) mm</p> <p>Connectors: 2x3 pin (CPU power), 2x4 pin (mainboard power)</p> <p>Active PFC circuit (Power Factor Correction)</p>
<b>Warranty</b>	<p>24 Months Pick-Up-And-Return Service</p>

Shuttle XPC Barebone P2 3500PA – Connectors



- Front Panel**
- 1 5.25" bay
  - 2 3.5" bay
  - 3 Eject button
  - 4 HDD LED
  - 5 Power Switch & LED
  - 6 Reset Button
  - 7 Microphone input
  - 8 Headphone output
  - 9 USB 2.0 Ports
  - 10 Mini Firewire port (1394)

- Back Panel**
- 1 Clear CMOS button
  - 2 Wireless LAN perforation
  - 3 AC Power Switch
  - 4 AC Power Socket
  - 5 PCI Express x16 graphics card
  - 6 PCI slot
  - 7 External SATA ports
  - 8 USB 2.0 ports
  - 9 Firewire port (1394)
  - 10 Gigabit LAN ports
  - 11 S/PDIF out (coaxial)
  - 12 S/PDIF out (optical)
  - 13 S/PDIF in (optical)
  - 14 Line out (front)
  - 15 Line in
  - 16 Line out (center/bass)
  - 17 Line out (back)
  - 18 Line out (side)