

Efficient and powerful 3-litre PC

The ultra-compact Shuttle Slim-PC X 8100B is an ideal choice for a small, but powerful Mini PC. Not only is it suitable for a low-noise home-media PC with support of 4K displays, it also meets the requirements towards an office PC and industrial applications. It features two Gigabit-LAN interfaces for server applications and two serial COM ports which are commonly required for connecting many professional devices. Its three digital video outputs allow for operating two displays at the same time. In a team with 22nm socket LGA1150 Intel "Haswell" processor and a 2.5" SSD drive the X 8100B makes for a power-efficient and reliable system for a wide range of applications. The built-in heatpipe cooling ensures the system runs quietly at maximum stability.

Shuttle Slim-PC BTO System **X 8100B**



Open Front Version – based on XH81



Version with front doors – based on XH81V

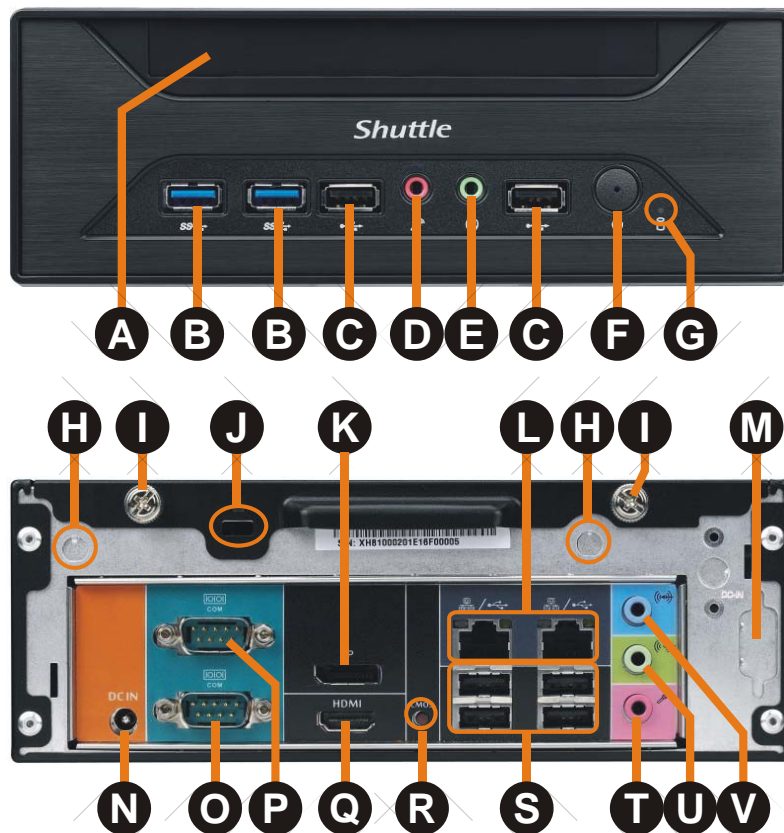


With vertical stand (optional)

Feature Highlights	
Slim-Design	<ul style="list-style-type: none"> • Slim 3.5 litre chassis, black • Dimensions: 23.8 x 20 x 7.2 cm (L/W/H) • Based on XH81: free accessible front • Based on XH81V: with front covers • Max. operating temperature: 0~50°C
Chipset	<ul style="list-style-type: none"> • Intel H81 Chipset
Operating System	<ul style="list-style-type: none"> • Windows 7 Home Premium / Professional • Windows 8.1 / Pro
Processor	<ul style="list-style-type: none"> • Socket LGA1150 "Haswell" processor: Core i7 / i5 / i3, Pentium or Celeron • With heatpipe cooling system
Memory	<ul style="list-style-type: none"> • Up to 16 GB DDR3-1333/1600
Graphics	<ul style="list-style-type: none"> • Integrated Intel HD graphics supports 4K (Depending on processor) • Video outputs: HDMI 1.4 & DisplayPort 1.2
Storage	<ul style="list-style-type: none"> • Up to two 2.5" hard disks or SSD drives • Up to one mSATA SSD drive • One optional Slimline DVD or Blu-ray drive
Other Connectors	<ul style="list-style-type: none"> • 5.1 HD Audio (digital audio via HDMI/DP) • 2x USB 3.0 front, 6x USB 2.0 (2 front, 4 rear) • Dual Gigabit LAN (RJ45), supports WOL, PXE • 2x COM ports (RS232 + RS232/RS422/RS485)
Optional Accessories	<ul style="list-style-type: none"> • Vertical stand (PS01), VESA mount (PV02), VGA adapter (PVG01), WLAN kit (WLN-S)
Power Supply	<ul style="list-style-type: none"> • External 90W fanless power adapter
Applications	<ul style="list-style-type: none"> • Home, office, vertical market

Images for illustration purposes only.

Shuttle Slim-PC X 8110B – Front and Back Panel



Front Panel

- A** 5.25" bay for optical slimline drive (DVD or Blu-ray)
- B** 2x USB 3.0 ports
- C** 2x USB 2.0 ports
- D** Microphone input
- E** Headphone output
- F** Power on button with LED
- G** LED indicator for hard disk activity

Back Panel

- H** 2x perforation for optional WLAN antennas
- I** 2x thumbscrews
- J** Hole for Kensington Lock
- K** DisplayPort Video/Audio output
- L** Dual Gigabit network (RJ45)
- M** Perforation for optional VGA-out (PVG01)
- N** Connector for power adapter
- O** RS232 / RS422 / RS485 serial interface (COM)
- P** RS232 serial interface (COM port)
- Q** HDMI Video/Audio output
- R** Clear CMOS button
- S** 4x USB 2.0
- T** Microphone input
- U** Headphone / line-out
- V** Audio line-in



COM port Pin 9 Configuration

Pin 1 is a multi-functional signal. Based on Jumper 3 configuration on the mainboard, it can be configured as Ring Indicator (RI) or external power supply with either 5V or 12V voltage level (each COM port separately).

The Basis of X 8110B: XH81(V)-Series Overview



XH81V Black & White

With covers for the optical drive and the I/O ports



XH81 Black

Free accessible front (without covers)

Optional Accessories for XH81 and XH81V



Vertical Stand (PS01)

The XH81(V) is to be used in horizontal operation by default. The optional stand PS01 allows to be used in upright position also.



VESA75/100-mount (PV02)

The optional VESA mount allows it to be installed on to walls or affixed to the rear side of a monitor.



VGA-Port Adapter (PVG01)

Optional D-Sub VGA Video Output



WLAN-Kit (WLN-S)

Wireless LAN adapter with two external antennas supports IEEE 802.11b/g/n at max. 300 Mbit/s.



3.5" Hard Disk Rack (PHD4)

PHD4 allows for installation of one 3.5" hard drive. However doing so means no other drives such as a slimline DVD drive or a 2.5" HDD/SSD can be used.



for XH81V only:

Drive bay cover (MY01)

Cover for the slimline drive bay.
Please contact Shuttle for "Mylar POI-MY01". [7]



for XH81 only:

Triple COM Ports (PCM3)

This accessory provides three additional COM ports to the front panel which means the upper bay can no longer be used for an optical drive.

Connectivity / Applications

The X 8110B wealth of ports qualifies it for a wide range of applications and external devices.



The X 8110B is your powerful 3.5-litre Slim-PC solution for high performance driven applications, e.g.:

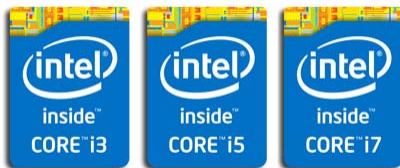
- Digital Signage
- In-store Audio/Video entertainment
- Gambling
- Home-Media
- Office
- Call Centre
- Education
- Kiosk
- Point of Sales (POS)
- Medical
- Automation
- Small server

Shuttle Slim-PC X 8110 – Product Features



The 3.5-litre chassis - a clean and modern look

Shuttle has always placed great emphasis on the interior and exterior aesthetics of their Mini-PCs with the belief that a good blend of style and form factor allow the Mini-PC to be attractive, versatile and work well in almost any environment. And the X 8110B was designed just like that and shines in a clean and modern appearance. The optical drive and front panel connectors are freely accessible or covered by front doors optionally. This tiny tot barely stands 7.3 cm in height with a volume of 3.5 litres.



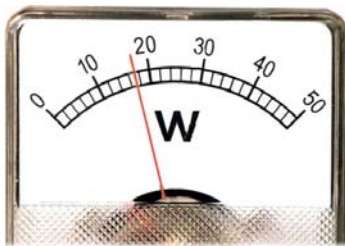
Supports LGA1150 processors and up to 16 GB DDR3

A large number of socket 1150 Intel "Haswell" processors (also "Haswell Refresh") is available ranging from Celeron to Core processors with a maximum TDP of 65W. Plus, up to a maximum capacity of 16 GB of DDR3 memory can be fitted.



Low noise thanks to heatpipe cooling system

An active dual-fan heatpipe cooling system ensures whisper-quiet operation and system stability. A heatpipe is a hollow tube containing a heat transfer liquid. As the liquid evaporates, it carries heat to the cool end, where it condenses and then returns to the hot end. Heatpipes thus have a much higher effective thermal conductivity than solid materials. Please keep the vent holes clear.



Energy-saving

The power consumption mainly depends on the processor used and its load. If an Intel Core i3-4130 (3,4 GHz, TDP = 54W) processor is installed, the system consumes about 17W in idle mode. Under full load, the power consumption is 58W.

Note: the maximum output wattage of the power adapter is specified with 90W. Assuming the adapter's efficiency is 90%, the input wattage can reach up to 100W.



Extended temperature range and reliability

The X 8110B is outstandingly robust thanks to its tough chassis, and with an operating temperature range of 0-50 °C it is suitable for use in the most demanding environments. Designed entirely using all solid capacitors, X 8110B is guaranteed to deliver maximum stability, reliability and longer system lifetime for long-term applications like digital signage.

Caution: for high ambient temperature over 40°C we recommend to use Solid State Disks (SSDs) instead of Hard Disk Drives (HDDs).



Great Connectivity

On the front, elegantly hidden from view behind drive doors, the panel reveals four USB ports two of which being USB 3.0. There are also two 3.5mm jacks for headphone and microphone. In addition, the back panel offers a wide range of I/O connectivity as well.



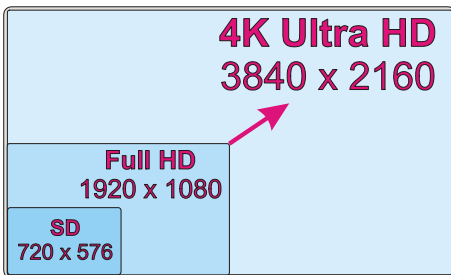
Dual Gigabit LAN Network

Today's media-rich communications across the internet and within enterprises create need for bandwidth. This is why Shuttle applies Gigabit-LAN performance to their Mini PCs and X 8110B even supports two of them. Dual networking allows the computer to connect to a single network using two cables at once with an appropriate switch (teaming mode with load balancing or failover function) or to two different networks depending on the needs of the user.



Dual Display with HDMI and DisplayPort (optional VGA)

The X 8110B features two digital video outputs: HDMI 1.4 and DisplayPort 1.2. Dual View technology offers multiple display support on up to two separate monitors. This helps improve on productivity by allowing for spreading multiple windows across two monitors while working with them simultaneously. Furthermore, the X 8110B supports an optional D-Sub/VGA port. [2],[6]



Supports 4K Ultra HD at 60Hz

The X 8110B supports one display running at 4K (3840 x 2160 / 2160p) high resolution when connected to its DisplayPort video output. As the successor to the Full HD standard, Ultra HD delivers a four times higher resolution with a wider colour space and colour depth.

An Intel Core i3 processor or higher is recommended for smooth 4K (2160p) video playback. [6]



Two serial ports

Many PCs do not have these legacy ports any longer, since they have been superseded and replaced by USB for most consumer applications, but they are still commonly used for applications such as industrial automation systems, scientific analysis, POS systems and other industrial applications. The X 8110B features two serial RS-232 ports which also support both 5 or 12V auxiliary voltage. The lower COM port also supports the RS422 and RS485 standard.



Kensington Lock

This is a small, metal-reinforced hole as part of an anti-theft system. (The lock-and-cable are not included)



Power on after Power fail

The BIOS setup provides a "Power-On after Power Fail" function that can be found under "Power Management Configuration". As the name indicates, this function determines the PC's behaviour after power failure: (1) unconditional power on, (2) restore former status or (3) keep system turned off. As a matter of the nature of this function, it may fail after short power failures. This is why the X 8110B also comes with a hardware-based solution. By removing Jumper 4 (see image) the system will start unconditionally once power is applied.



TPM expansion slot

Shuttle X 8110B can be equipped with an optional Trusted Platform Module (TPM), which offers facilities for the secure generation of cryptographic keys, and limitation of their use, in addition to a random number generator. And it includes capabilities such as remote attestation and sealed storage. The TPM expansion slot is easy accessible behind a chassis cover.

X 8110B supports the following TPM 1.2 modules:

- Asus TPM Trusted Platform Module TPM/FW3.19
- GIGABYTE TPM-Module GCTPMR-00-GI

Shuttle Slim-PC X 8110B Specifications

<i>Warranty</i>	24 months Pick-Up-And-Return
<i>Chassis</i>	Slim X-type chassis, colour: black or white Dimensions: 240 x 200 x 72 mm (LWH) = 3.5 litres Hole for Kensington Lock at the back panel Operation position horizontal or even vertical with the optional stand PS01
<i>Chassis Design Options</i>	1) based on XH81: free accessible optical drive and front panel connectors 2) based on XH81V: Covers for optical drive and front panel connectors
<i>Operation Systems</i>	Windows 7 Home Premium / Professional 32/64 bit or Windows 8.1 / Pro 32/64 bit
<i>Mainboard Chipset</i>	Mainboard / Chipset / BIOS Mini-ITX form factor 17 x 17 cm, 8 layer design Chipset: Intel® H81 Chipset (Intel DH82H81 PCH, code name "Lynx Point") AMI BIOS in 8 Mbit EEPROM with SPI interface All capacitors are high quality solid capacitors Supports hardware monitoring and watch dog functionality Supports Unified Extensible Firmware Interface (UEFI) Supports power on after power failure [1]
<i>Processor</i>	Socket LGA 1150 processor of the fourth generation: Intel Core i7 / i5 / i3, Pentium or Celeron processors (max. 65W TDP) Codename "Haswell", 22nm process technology, up to 8 MB of L3 cache
<i>Heatpipe Cooling</i>	Processor cooling with heat-pipe technology and two fans (6cm)
<i>Memory</i>	Up to 16 GB DDR3-1600 SDRAM memory (PC3-12800)
<i>Integrated Graphics</i>	The features of the integrated graphics function depend on the processor used. [3] Supports Dual-Independent-Display at Full HD 1080p resolution Supports Blu-ray (BD) playback with HDCP Supports 4K Ultra HD resolution at 3840 x 2160 via DisplayPort (2160p/60Hz) and HDMI (2160p/30Hz) [6] HDMI and DisplayPorts support HD video plus multi-channel digital audio via a single cable Optional D-Sub/VGA connector [2]
<i>HDD / SSD storage</i>	Up to three mass storage drives are supported: First option: 2.5" hard disk drive or 2.5" SSD Second option: 2.5" hard disk drive Third option: mSATA SSD Mini-PCIe card

<i>Optional ODD drive</i>	Optional configureable with a DVD or Blu-ray drive in 5.25" slimline form factor
<i>Audio</i>	Audio Realtek® ALC 662 5.1-channel High-Definition Audio Three analog audio connectors (3.5mm) at the back panel: 1) Front line-out (head-phone) 2) Rear Surround line-out (shared with microphone input) 3) Center line-out (shared with line-in) Digital audio output is provided via HDMI and DisplayPort
<i>Dual Gigabit LAN Controller</i>	Dual Realtek 8111G Ethernet network controller (Gigabit) Supports 10 / 100 / 1.000 MBit/s operation Two RJ45 ports (dual network) support Teaming [4] Supports WAKE ON LAN (WOL) Supports network boot by Preboot eXecution Environment (PXE)
<i>Front Panel Connectors</i>	Microphone input Audio Line-out (headphone) 2x USB 3.0 2x USB 2.0 Power button Power LED (blue) HDD LED (yellow)
<i>Back Panel Connectors</i>	DisplayPort 1.2 audio/video output HDMI 1.4 audio/video output 4x USB 2.0 2x GigaBit LAN (RJ45) [4] 2x RS232 serial ports (5V/12V, 1x switchable to RS422 / RS485) Audio Line-in Audio Line-out Audio Mic-in Clear CMOS Button Hole for Kensington Lock
<i>Power adapter</i>	External 90 W power adapter (fanless) Input: 100~240 V AC, 50/60 Hz Output: 19 V DC, 4.74 A, max. 90 W DC Connector: 5.5/2.5mm (outer/inner diameter)
<i>Optional Accessories</i>	(1) Vertical stand (PS01) (2) VESA mount (PV02) (3) D-Sub VGA video output (PVG01) [2] (4) WLAN module (WLN-S) [5] (5) Graphics port adapter: HDMI-DVI, DisplayPort-HDMI, DisplayPort-DVI
<i>Environmental Specification</i>	Operating temperature range: 0~50°C Relative humidity range: 10~90% (non-condensing)

© 2014 by Shuttle Computer Handels GmbH (Germany). All information subject to change without notice. Pictures for illustration purposes only.

Conformity and Certifications

EMI: FCC, CE, BSMI, C-Tick
 Safety: CB, BSMI, ETL
 Others: RoHS, Energy Star V5.0, EuP Lot 6
 This device is classed as a technical information equipment (ITE) in class B and is intended for use in living room and office. The CE-mark approves the conformity by the EU-guidelines:
 - EMV-guideline 89/336/EEG electromagnetic tolerance
 - LVD-guideline 73/23/EEG use of electric devices within certain voltage-limits

[1] Power on after power fail:

The BIOS setup provides a "Power-On after Power Fail" function that can be found under "Power Management Configuration". As the name indicates, this function determines the PC's behaviour after power failure: (1) unconditional power on, (2) restore former status or (3) keep system turned off. As a matter of the nature of this function, it may fail after short power failures. This is why this PC also comes with a hardware-based solution. By removing Jumper 4 (on the mainboard near the "Shuttle" imprint), the system will start unconditionally once power is supplied.

[2] Optional D-Sub/VGA connector

The mainboard features one analog graphics connector. This 15-pin D-Sub VGA connector can be lead to the outside of the backpanel by using the optional adapter PVG01. However, you can use not more than two displays at the same time.

[3] mini-SATA (mSATA)

mSATA, not to confuse with "micro SATA", is a newer industry standard that converts the electrical SATA interface (1.5 or 3.0 Gbit/s) to the physical "Mini PCI Express" mini card form factor.

[4] Teaming Mode

The teaming function allows for grouping both available network adapters to have them work as one single adapter to create a virtual LAN. The benefit of this is that it enables load balancing and failover.

[5] Optional Wireless LAN module:

This Slim PC supports an optional WLAN module which consists of a half-size Mini-PCIe card with IEEE 802.11n functionality and an external antenna with an appropriate antenna cable. Shuttle offers a suitable accessory kit "WLN-S" with two antennas to increase WLAN range.

[6] 4K Ultra-HD resolution

A 4K-display with Ultra-HD resolution (3840 x 2160) should be connected via DisplayPort, as only this port supports a higher refresh rate of 60Hz. Certain displays (e.g. Dell UP2414Q) however require MST mode (Multi-Stream Transport) to be enabled which sends two separate images at half resolution each to the display. These two images are then combined and put in correct order by the Intel graphics driver when in Collage mode. Please note that HBR2-mode (High Bit Rate 2) must be supported by each display to have two of them run at 4K resolution.

The video playback performance depends on the video format, bit rate and the processor used. Daily office applications usually won't require the system to run under full load, however for smooth 4K (2160p) video playback requirements are different. An [Intel Core i3 processor or higher is recommended here](#), since the performance of the integrated graphics engine of a Celeron or Pentium processor might not suffice.

4th Generation Intel Core Processor Family

LGA1150 socket 22nm "Haswell" processor overview (Date: August 2014)

Processors with TDP > 65W are **not** supported by X 8110B (highlighted red)

Name	Model	Cores	HT	Clock	Turbo	Cache	TDP	Graphics	GPU max.	DDR3
Core i7	4790	4	Yes	3.6 GHz	4.0 GHz	8 MB	84 W	HD 4600	1.20 GHz	1333/1600
	4790S	4	Yes	3.2 GHz	4.0 GHz	8 MB	65 W	HD 4600	1.20 GHz	1333/1600
	4790T	4	Yes	2.7 GHz	3.9 GHz	8 MB	45 W	HD 4600	1.20 GHz	1333/1600
	4785T	4	Yes	2.2 GHz	3.2 GHz	8 MB	35 W	HD 4600	1.20 GHz	1333/1600
	4771	4	Yes	3.5 GHz	3.9 GHz	8 MB	84 W	HD 4600	1.20 GHz	1333/1600
	4770K	4	Yes	3.5 GHz	3.9 GHz	8 MB	84 W	HD 4600	1.25 GHz	1333/1600
	4770	4	Yes	3.4 GHz	3.9 GHz	8 MB	84 W	HD 4600	1.20 GHz	1333/1600
	4770S	4	Yes	3.1 GHz	3.9 GHz	8 MB	65 W	HD 4600	1.20 GHz	1333/1600
	4770T	4	Yes	2.5 GHz	3.7 GHz	8 MB	45 W	HD 4600	1.20 GHz	1333/1600
	4770TE	4	Yes	2.3 GHz	3.3 GHz	8 MB	45 W	HD 4600	1.00 GHz	1333/1600
4765T	4	Yes	2.0 GHz	3.0 GHz	8 MB	35 W	HD 4600	1.20 GHz	1333/1600	
Core i5	4690T	4	-	2.5 GHz	3.5 GHz	6 MB	45 W	HD 4600	1.20 GHz	1333/1600
	4690S	4	-	3.2 GHz	3.9 GHz	6 MB	65 W	HD 4600	1.20 GHz	1333/1600
	4690	4	-	3.5 GHz	3.9 GHz	6 MB	84 W	HD 4600	1.20 GHz	1333/1600
	4670T	4	-	2.3 GHz	3.3 GHz	6 MB	45 W	HD 4600	1.20 GHz	1333/1600
	4670S	4	-	3.1 GHz	3.8 GHz	6 MB	65 W	HD 4600	1.20 GHz	1333/1600
	4670K	4	-	3.4 GHz	3.8 GHz	6 MB	84 W	HD 4600	1.20 GHz	1333/1600
	4670	4	-	3.4 GHz	3.8 GHz	6 MB	84 W	HD 4600	1.20 GHz	1333/1600
	4590T	4	-	2.0 GHz	3.0 GHz	6 MB	35 W	HD 4600	1.15 GHz	1333/1600
	4590S	4	-	3.0 GHz	3.7 GHz	6 MB	65 W	HD 4600	1.15 GHz	1333/1600
	4590	4	-	3.3 GHz	3.7 GHz	6 MB	84 W	HD 4600	1.15 GHz	1333/1600
	4570TE	2	Yes	2.7 GHz	3.3 GHz	4 MB	35 W	HD 4600	1.00 GHz	1333/1600
	4570T	2	Yes	2.9 GHz	3.6 GHz	4 MB	35 W	HD 4600	1.15 GHz	1333/1600
	4570S	4	-	2.9 GHz	3.6 GHz	6 MB	65 W	HD 4600	1.15 GHz	1333/1600
	4570	4	-	3.2 GHz	3.6 GHz	6 MB	84 W	HD 4600	1.15 GHz	1333/1600
	4460T	4	-	1.9 GHz	2.7 GHz	6 MB	35 W	HD 4600	1.10 GHz	1333/1600
	4460S	4	-	2.9 GHz	3.4 GHz	6 MB	65 W	HD 4600	1.10 GHz	1333/1600
	4460	4	-	3.2 GHz	3.4 GHz	6 MB	84 W	HD 4600	1.10 GHz	1333/1600
4440S	4	-	2.8 GHz	3.3 GHz	6 MB	65 W	HD 4600	1.10 GHz	1333/1600	
4440	4	-	3.1 GHz	3.3 GHz	6 MB	84 W	HD 4600	1.10 GHz	1333/1600	
4430S	4	-	2.7 GHz	3.2 GHz	4 MB	65 W	HD 4600	1.10 GHz	1333/1600	
4430	4	-	3.0 GHz	3.2 GHz	6 MB	84 W	HD 4600	1.10 GHz	1333/1600	
Core i3	4370	2	Yes	3.8 GHz	-	4 MB	54 W	HD 4600	1.15 GHz	1333/1600
	4360T	2	Yes	3.2 GHz	-	4 MB	35 W	HD 4400	1.15 GHz	1333/1600
	4360	2	Yes	3.7 GHz	-	4 MB	54 W	HD 4600	1.15 GHz	1333/1600
	4350T	2	Yes	3.1 GHz	-	4 MB	35 W	HD 4600	1.15 GHz	1333/1600
	4350	2	Yes	3.6 GHz	-	4 MB	54 W	HD 4600	1.15 GHz	1333/1600
	4340	2	Yes	3.6 GHz	-	4 MB	54 W	HD 4600	1.15 GHz	1333/1600
	4330TE	2	Yes	2.4 GHz	-	4 MB	35 W	HD 4600	1.00 GHz	1333/1600
	4330T	2	Yes	3.0 GHz	-	4 MB	35 W	HD 4600	1.15 GHz	1333/1600
	4330	2	Yes	3.5 GHz	-	4 MB	54 W	HD 4600	1.15 GHz	1333/1600
	4160T	2	Yes	3.1 GHz	-	3 MB	35 W	HD 4400	1.15 GHz	1333/1600
4160	2	Yes	3.6 GHz	-	3 MB	54 W	HD 4600	1.15 GHz	1333/1600	
4130T	2	Yes	2.9 GHz	-	3 MB	35 W	HD 4400	1.15 GHz	1333/1600	
4130	2	Yes	3.4 GHz	-	3 MB	54 W	HD 4400	1.15 GHz	1333/1600	

© 2014 by Shuttle Computer Handels GmbH (Germany). All information subject to change without notice. Pictures for illustration purposes only.

Name	Modell	Kerne	HT	Takt	Turbo	Cache	TDP	Grafik	GPU max.	DDR3
Pentium	G3460	2	-	3.5 GHz	-	3 MB	53 W	HD	1.10 GHz	1333/1666
	G3450T	2	-	2.9 GHz	-	3 MB	35 W	HD	1.10 GHz	1333/1666
	G3450	2	-	3.4 GHz	-	3 MB	53 W	HD	1.10 GHz	1333/1666
	G3440T	2	-	2.8 GHz	-	3 MB	35 W	HD	1.10 GHz	1333/1666
	G3440	2	-	3.3 GHz	-	3 MB	53 W	HD	1.10 GHz	1333/1666
	G3430	2	-	3.3 GHz	-	3 MB	53 W	HD	1.10 GHz	1333/1666
	G3420T	2	-	2.7 GHz	-	3 MB	35 W	HD	1.10 GHz	1333/1666
	G3420	2	-	3.2 GHz	-	3 MB	53 W	HD	1.15 GHz	1333/1666
	G3320TE	2	-	2.3 GHz	-	3 MB	35 W	HD	1.00 GHz	1333/1666
	G3250T	2	-	2.8 GHz	-	3 MB	35 W	HD	1.10 GHz	1333
	G3250	2	-	3.2 GHz	-	3 MB	53 W	HD	1.10 GHz	1333
	G3240T	2	-	2.7 GHz	-	3 MB	35 W	HD	1.10 GHz	1333
	G3240	2	-	3.1 GHz	-	3 MB	53 W	HD	1.10 GHz	1333
	G3220T	2	-	2.6 GHz	-	3 MB	35 W	HD	1.10 GHz	1333
	G3220	2	-	3.0 GHz	-	3 MB	53 W	HD	1.10 GHz	1333
Celeron	G1850	2		2.9 GHz	-	2 MB	53 W	HD	1.05 GHz	1333
	G1840T	2		2.5 GHz	-	2 MB	35 W	HD	1.05 GHz	1333
	G1840	2		2.8 GHz	-	2 MB	53 W	HD	1.05 GHz	1333
	G1830	2	-	2.8 GHz	-	2 MB	54 W	HD	1.05 GHz	1333
	G1820TE	2	-	2.2 GHz	-	2 MB	35 W	HD	1.00 GHz	1333
	G1820T	2	-	2.4 GHz	-	2 MB	35 W	HD	1.05 GHz	1333
	G1820	2	-	2.7 GHz	-	2 MB	54 W	HD	1.05 GHz	1333

K = unlocked, **S** = Performance optimized lifestyle, **T** = Power optimized lifestyle, **HT** = Hyper Threading (SMT).
 Please refer to the support list for detailed processor support information at global.shuttle.com.