

### All-in-One PC for POS, POI, Kiosk Applications

The Shuttle XPC all-in-one X50V7L is the latest addition to the X50 Series and is powered by Intel's Celeron 4205U processor. The new Whiskey Lake-U processor architecture helps improve on power consumption and computing power. Thanks to its passive cooling, the system is virtually noiseless, maintenance-free and approved for 24/7 nonstop operation. Particularly suitable for vertical applications is the arrangement of connectors at the bottom and the IP54 compliant front panel which is dust-protected and protected from splashing of water.

### XPC all-in-one Barebone X50V7L Black

Without WLAN module, but with WLAN antennas



Images for illustration purposes only.

Feature Highlights	
<b>All-in-One Design</b>	<ul style="list-style-type: none"> <li>XPC all-in-one with touchscreen</li> <li>Small: 391 x 327 x 42 mm (WHL)</li> <li>Stand can also be used as a handle</li> <li>100 mm VESA mount capable</li> <li>IP54 compliant front panel</li> <li>Approved for 24/7 nonstop operation</li> </ul>
<b>Display &amp; Graphics</b>	<ul style="list-style-type: none"> <li>39.6 cm (15.6") resistive touchscreen with a 1366 x 768 resolution</li> <li>Integrated Intel UHD 610 graphics</li> <li>HDMI 1.4a + D-Sub/VGA Video output</li> </ul>
<b>CPU &amp; Cooling</b>	<ul style="list-style-type: none"> <li>Intel Celeron 4205U, 1.8 GHz, 15 W TDP</li> <li>Fanless heatpipe cooling system</li> </ul>
<b>Storage (not included)</b>	<ul style="list-style-type: none"> <li>Supports max. 2x 32 GB DDR4-2133 SO-DIMM</li> <li>Supports one 2.5" SATA hard disk / SSD</li> <li>Supports one M.2-2280 SSD (SATA / PCIe)</li> <li>Supports internal USB stick (USB 2.0, type A)</li> </ul>
<b>Operating System</b>	<ul style="list-style-type: none"> <li>Operating system is not included</li> <li>Supports Windows 10/11 &amp; Linux (64-bit)</li> </ul>
<b>Connectivity</b>	<ul style="list-style-type: none"> <li>HDMI 1.4a, D-Sub/VGA</li> <li>4x USB 3.2 Gen 1 (5 Gbps), 2x USB 2.0, internal: 1x USB 2.0 Type A</li> <li>Microphone input, headphones output</li> <li>Gigabit LAN</li> <li>Optional: 4x RS232, 1x LPT, 1x RJ11</li> </ul>
<b>Built-in</b>	<ul style="list-style-type: none"> <li>2.0 Megapixel HD webcam</li> <li>2x 2 W speakers</li> <li>Electret Condenser Microphone</li> </ul>
<b>Power Supply</b>	<ul style="list-style-type: none"> <li>External fanless power adapter, 65 W</li> </ul>
<b>Warranty</b>	<ul style="list-style-type: none"> <li>24 months Bring-in Service</li> </ul>



15.6" Touchscreen



Nonstop operating



Fanless cooling



Front protected: dust & water



Up to four COM ports



Supports Windows 10/11 & Linux (64-bit)



Full HD Webcam



2x USB 3.0  
4x USB 2.0



Watchdog Hardware

Shuttle Product	Processor Model	Cores / Threads	Clock / Turbo	L3-Cache	Intel Graphics	WLAN	UPC Code
X50V7 Black	Celeron 4205U	2 / 2	1.8 / - GHz	2 MB	UHD 610	Yes	887993002149
X50V7L Black						-	887993003559
X50V7U3 Black	Core i3-8145U	2 / 4	2.1 / 3.9 GHz	3 MB	UHD 620	Yes	887993002163
X50V7U3L Black						-	887993003566

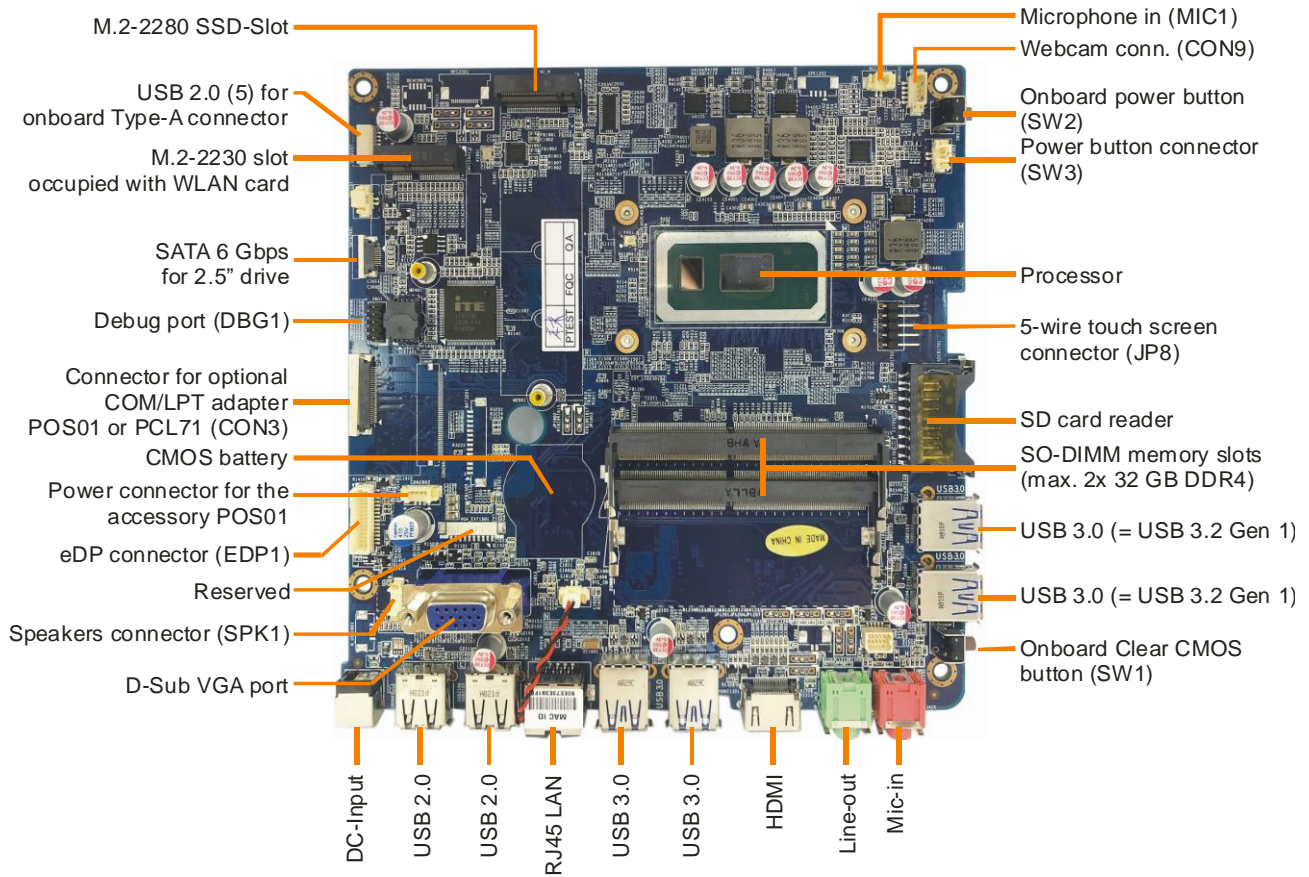


Shuttle XPC all-in-one X50V7L – Overview

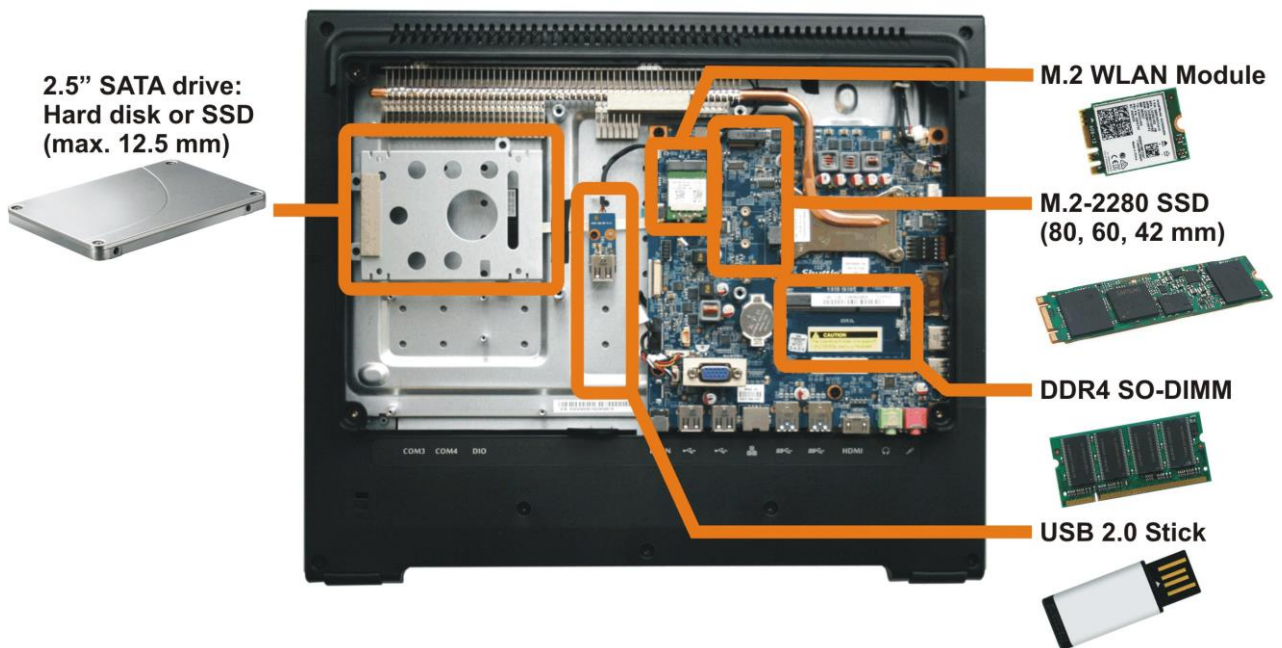


- |  |                           |                                |
|--|---------------------------|--------------------------------|
| 1 Touchscreen LCD display                      | 10 Hole with Power Button | 19 DC-input for Power Adapter  |
| 2 Webcam                                       | 11 SD Card Reader         | 20 2x USB 2.0                  |
| 3 Microphone                                   | 12 2x USB 3.2 Gen 1       | 21 RJ45 Gigabit LAN            |
| 4 Power on LED                                 | 13 Clear CMOS Button      | 22 2x USB 3.2 Gen 1            |
| 5 Hard disk LED                                | 14 Stand (handle)         | 23 HDMI Video Output           |
| 6 Stereo speakers                              | 15 Ventilation holes      | 24 Audio Line-out (headphones) |
| 7 Stylus with holder                           | 16 Kensington lock        | 25 Microphone Input            |
| 8 Power-on button                              | 17 D-Sub/VGA Video Output |                                |
| 9 2x Perforation for optional WLAN/LTE antenna | 18 Vesa Mount 100x100mm   |                                |

Shuttle XPC all-in-one X50V7L – Mainboard



Installable Components:



## Shuttle XPC all-in-one X50V7L – Special Features



### All applications at your fingertips

The innovative touchscreen technology delivers the simplest operation possible and makes the screen the centre of action. Its high-quality design lets you control the whole range of multimedia - music, movies, video playback and web browsers start by just touching the screen.



### All-in-One PC

Your complete PC system with many components already built in comes in just one single device! This includes the webcam, microphone, mainboard, display, touchscreen input interface, wireless LAN module and speakers. It helps you save space, looks simply stylish and reduces cable clutter.

### 24/7 nonstop-operation

The Shuttle XPC all-in-one X50V7L is officially approved for 24/7 permanent operation. Thanks to its low power consumption and completely passive cooling, this PC runs highly reliably making it perfectly suitable for digital signage and POI/POS applications.



### Conditions for permanent use:

- Free circulation of air amongst the PC must be guaranteed
- Ventilation holes must be kept clear
- If a hard disk is installed, this must also be approved for permanent operation by its manufacturer.



### Fanless and quiet

The Shuttle XPC all-in-one X50V7L uses a passive thermal module with heatpipes to lead heat out of the case quickly and evenly. The unique fanless design makes it perfect to be used in noise-sensitive environments such as living rooms, hospitals, libraries etc. As an additional benefit, fanless cases rarely gather dust on the inside and stay cleaner than others. So it's not only quiet and low in energy use, but also virtually maintenance-free.



**Connects to two external Full HD displays**

The Shuttle XPC all-in-one X50V7L features two video outputs: One analog D-Sub/VGA connector and one HDMI connector. Two external Full HD displays can be connected in extended mode. Now add the built-in display of the X50V7L and there are three displays showing different content.



**Protection Class IP54**

The front panel of the Shuttle XPC all-in-one X50V7L is dust-protected and protected from splashing of water according to IP protection class 54. Consequently, this All-in-One PC can be used for those indoor applications, where the touchscreen may be exposed to humidity and occasional splashing of water. This is particularly welcome in restaurants, laboratories, production or other places.



**Supports high-performance M.2 SSDs**

The M.2 slot (type 2280) is equipped with 4X PCI-Express v3.0 lanes and SATA 3.0 interface. Modern M.2 SSDs with PCI Express interface (PCIe) and NVMe provide a significant higher bandwidth as those using the older SATA standard. Type 2280 means it supports the usual M.2 cards with a width of 22 mm and a length of 80 mm.



**Optimised Cable Management**

Most of the connectors are now located on the back panel facing down. This leads to an effective cable management making for a clean, tidy appearance on the desk.

On the left side sit those connectors which need to be accessed from the front: the card reader and two USB ports.



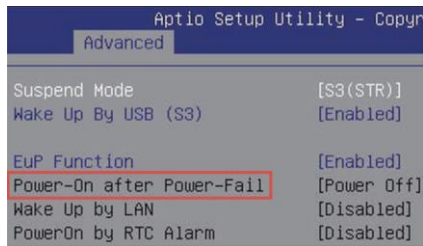
PCL71

POS01

**Optional COM, LPT, DIO ports**

Shuttle offers two optional accessories in order to add legacy ports to the Shuttle XPC all-in-one X50V7L. While the Shuttle XPC Accessory **PCL71** adds two serial COM ports and one parallel LPT port, the **POS01** adds two more COM ports (with RJ45 connector) and one Digital I/O 12 V / 24 V (RJ11) for a cash drawer, for example. COM ports are still common in industrial automation systems, scientific analysis, POS systems and other industrial applications.

© 2021 by Shuttle Computer Handels GmbH (Germany). All information subject to change without notice . Pictures for illustration purposes only.



### Power on after Power fail

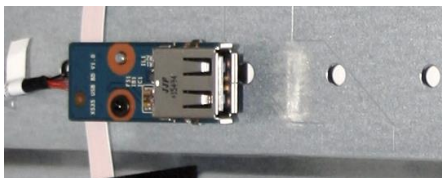
The BIOS setup provides a "Power-On after Power Fail" function that can be found under "Power Management Configuration" where the PC's behaviour after power failure can be determined.



### Hidden Power Button

Left photo: The power button can be deactivated to prevent unauthorised use. Just disconnect the appropriate cable from its header inside the chassis (see red circle).

Right photo: The power button can still be pressed using a straightened paper clip.



### Internal USB Slot

The Shuttle XPC all-in-one X50V7L features an internal USB 2.0 connector (type A) for a USB stick of max. 9 cm in length. This onboard connector support USB sticks (such as flash memory, WLAN or LTE/4G) or other USB devices like a radio module for home automation or RFID.



### Perforations for two optional external antennas

Der Shuttle XPC all-in-one X50V7L features two 7.5 mm perforations for the installation of two external WLAN or LTE/4G antennas.

Note: the WLAN/LTE module is not included with X50V7L



### VESA mount

The stand on the rear can easily be removed to unveil four VESA mounting screw holes that can be used for mounting arms and other mounting devices from a variety of manufacturers.



### Stylus for the touchscreen

The Shuttle XPC all-in-one X50V7L is equipped with a 5-wire resistive touchscreen for simple operation by finger (even with gloves) or stylus. The stylus comes supplied as standard and sits in an opening located on the top of the chassis. Using the stylus results in a smoother and more precise input than just using a finger.



### Kensington Lock

This is a small, metal-reinforced hole as part of an anti-theft system. (Lock and cable not included.)



### Carrying handle

The practical stand can be pulled upwards so that it can also be used as a handle making the Shuttle XPC all-in-one X50V7L easy to carry.

**Shuttle XPC all-in-one X50V7L – Range of Applications**

**Digital Signage**  
Visual advertising,  
Info Terminal



**POS**  
Checkout system in Retail  
Stores, Restaurants, Hotels



**POS Radio**  
Playing advertising  
and music



**Call System**  
e.g. for nurses (hospital)  
or security personnel



**Smart Home Control**  
Surveillance,  
Home Automation



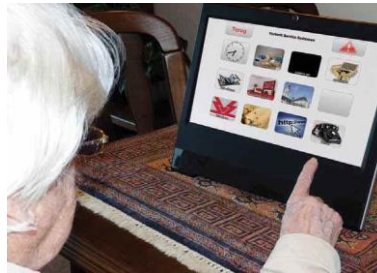
**Device Control**  
e.g. for copy  
machines



**Device Control**  
e.g. for health services or  
fitness equipment



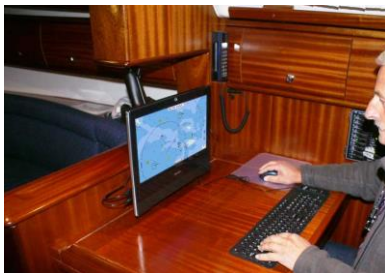
**Communication Device**  
e.g. for the elderly



**Visualisation**  
e.g. for industrial production  
machines



**On a boat**  
e.g. for navigation and  
entertainment



**Data Collector**  
e.g. Recording of  
working hours



**Entertainment**  
e.g. at the dentist or  
in the waiting room





## Shuttle XPC all-in-one X50V7L – Specifications

<i>Fanless and silent</i>	<p>Passive heatpipe cooling, no fan noise at all                  Perfect to be used in noise-sensitive environments                  Fanless, dust-free and thus virtually maintenance-free</p>
<i>24/7 nonstop operation</i>	<p>This device is approved for 24/7 permanent operation.                  Requirements:                  - Free circulation of air amongst the PC must be guaranteed.                  - Ventilation holes must be kept clear.                  - If a hard disk is installed, this must also be approved for permanent operation by its manufacturer.</p>
<i>IP54 protected</i>	<p>The front panel is dust-protected and protected from splashing of water according to protection class IP54.</p>
<i>Chassis</i>	<p>Colour: black                  Dimensions: 391 x 327 x 42 mm (W x H x D)                  100mm VESA mount capable                  Mounting hole for Kensington lock                  Weight: 3.6 kg net, 4.8 kg gross</p>
<i>Operating System</i>	<p>This system comes without operating system.                  It is compatible with:                  - Windows 10/11 (64-bit)                  - Linux (64-bit)</p>
<i>Touchscreen</i>	<p>Touchscreen function supports fingertip input                  Resistive 5-wire single-touch technology                  Stylus for the built-in touchscreen</p>
<i>15.6" Display</i>	<p>39.6 cm / 15.6" LCD display, ratio: 16:9 widescreen panel                  Resolution: 1366 x 768 = 1.05 Megapixel                  Backlight unit: High power LED, Luminance: 220 cd/sqm                  Glass thickness: 0.5 mm</p>
<i>Processor</i>	<p>Model: Intel Celeron 4205U (ULV)                  System-on-a-chip architecture (SoC) with integrated memory and graphics controller: no chipset required                  FCBGA1528 package - directly soldered onto the mainboard                  Code name: Whiskey Lake U (8<sup>th</sup> Generation Intel Core)                  Cores / Threads: 2 / 2                  Clock rate: 1.8 GHz                  L1/L2/L3 Cache: 128 kB / 512 kB / 2048 kB                  TDP wattage: 15 W maximum                  Manufacturing process: 3<sup>rd</sup> generation enhanced 14nm++                  Maximum Tjunction Temperature: 100 °C                  Supports 64-bit, VT-x (EPT), VT-d, Enhanced SpeedStep, NX bit, AES-NI, SSE 4.1/4.2</p>

© 2021 by Shuttle Computer Handels GmbH (Germany). All information subject to change without notice . Pictures for illustration purposes only.

<p><i>Integrated Graphics</i></p>	<p>Intel UHD Graphics 610            GPU clock frequency: 300~900 MHz            Execution Units (EUs): 12            Supports DirectX 12            Supports full H264, H265 8/10 bit, VP8/9, VC-1, AVC hardware decoding            Supports Quick Sync Video and Clear Video HD technology</p>
<p><i>Up to three displays</i></p>	<p>Two video ports support two additional independent screens:            1) HDMI 1.4a supports 1920 x 1080 @ 60 Hz or 3840 x 2160 @ 30 Hz            2) VGA / D-Sub analog video supports 1920 x 1080 @ 60 Hz            Special conditions for operation in Multi-Monitor mode:            1) Clone mode: all displays show the same content at 1366 x 768 resolution            2) Extended mode: all displays show different content</p>
<p><i>BIOS</i></p>	<p>AMI BIOS in 8 MByte EEPROM with SPI interface            Supports Power fail resume / always on            Supports Wake-on-LAN (WOL) from S3, S4, S5 ACPI states            Supports hardware monitoring and watch dog functionality            Supports Firmware TPM v2.0 functionality</p>
<p><i>Memory</i></p>	<p>2x SO-DIMM slot with 260 pins            Supports DDR4-2133 (PC4-17000) SDRAM at 1.2 V            Supports Dual Channel mode            Supports a maximum of 32 GB per DIMM, maximum total size: 64 GB            Supports two unbuffered DIMM modules (no ECC or registered)</p>
<p><i>Storage</i></p>	<p>Supports one SATA hard disk or one SATA SSD drive in 6.35 cm /2.5" format            The SATA 3.0 interface supports up to 600 MB/s data transfer speed (6 Gbit/s).            Supports one drive with up to 12.5 mm in height</p>
<p><i>M.2-2280 Slot</i></p>	<p>The M.2 2280 BM slot provides the following interfaces:            - PCI-Express Gen. 3.0 X4 with up to 32 Gbps Data Transfer Speed            - SATA v3.0 (max. 6 Gbps)            It supports M.2 cards with a width of 22 mm and a length of 80 mm (type 2280).            Supports M.2 SATA SSDs (with B+M key) and M.2 PCIe SSDs (with M key)</p>
<p><i>Card Reader</i></p>	<p>Integrated card reader supports SD, SDHC and SDXC memory flash cards</p>
<p><i>Webcam</i></p>	<p>Integrated 2.0 Megapixel (1600 x 1200) HD webcam</p>
<p><i>Microphone Speakers</i></p>	<p>Front panel with integrated Electret Condenser Microphone and 2x 2W speakers</p>
<p><i>Audio</i></p>	<p>Realtek ALC269 Audio Codec            Two analog audio connectors (3.5 mm) on the bottom side:            1) Line-out (headphones)            2) Microphone input            Digital Audio is supported via HDMI.</p>

© 2021 by Shuttle Computer Handels GmbH (Germany). All information subject to change without notice. Pictures for illustration purposes only.

<p><i>Wired Network</i></p>	<p>Intel i211 Ethernet Controller with MAC, PHY and PCIe interface                  Supports 10 / 100 / 1.000 MBit/s operation                  Supports WAKE ON LAN (WOL) from S3, S4 modes                  Supports network boot by Preboot eXecution Environment (PXE)</p>
<p><i>Prepared for WLAN (optional)</i></p>	<p>This product comes with two pre-mounted internal WLAN antennas and has a M.2-2230-E slot for an optional M.2-WLAN card.                  The case also features two 6.5 mm perforations for the installation of external WLAN antennas, which must be purchased separately.</p>
<p><i>Front LEDs</i></p>	<p>Power LED (blue)                  Hard disk LED (orange)</p>
<p><i>Connectors left side</i></p>	<p>Power button                  2x USB 3.2 Gen 1 (5 Gbps)                  SD card reader                  Hole with power button                  Hole with Clear CMOS button                  Perforation for optional WLAN/LTE antenna (diameter: 6.5 mm)</p>
<p><i>Connectors bottom side</i></p>	<p>HDMI 1.4a (supports digital video and digital audio)                  2x USB 3.2 Gen 1 (5 Gbps)                  2x USB 2.0                  Gigabit Network (LAN, RJ45)                  Audio Line-out / headphones (3.5 mm jack)                  Microphone input (3.5 mm jack)                  DC input for external power adapter (5.5 / 2.5 mm)                  Perforation for optional WLAN/LTE antenna (diameter: 6.5 mm)                  Optional: 2x COM/serial (RJ45), DIO (RJ11) for cash drawer (accessory POS01)</p>
<p><i>Connectors rear side</i></p>	<p>VGA connector (D-Sub 15 pol., analog video)                  Optional: 2x COM/serial (D-Sub), 1x LPT/parallel (accessory: PCL71 or POS01)</p>
<p><i>Connectors onboard</i></p>	<p>Internal USB 2.0 type A connector for a USB stick                  Serial ATA (6 Gbps)                  Serial ATA power connector                  3x USB 2.0 header (all occupied)                  eDP connector (Embedded DisplayPort) - occupied by the display                  Connector for optional COM/LPT adapter POS01 or PCL71</p>
<p><i>Power Adapter</i></p>	<p>External 65 W power adapter (fanless)                  Input: 100~240 V AC, 50/60 Hz, max. 1.6 A                  Output: 19 V DC, max. 3.42 A, max. 65 W                  DC Connector: 5.5 / 2.5 mm (outer/inner diameter)                  Note: The X50V7L also supports a 60 W power adapter with 12 V DC output voltage</p>
<p><i>DC Input</i></p>	<p>DC Input Connector: 5.5 / 2.5 mm (outer/inner diameter)                  The DC-input of the computer supports an external power source with either 12V±5% or 19V±5%.</p>

© 2021 by Shuttle Computer Handels GmbH (Germany). All information subject to change without notice . Pictures for illustration purposes only.

<p><i>Included Accessories</i></p>	<p>Quick Guide                  Driver DVD                  External Power Adapter (65W / 19V) with Power cord                  Serial ATA cable for the 2.5" drive                  Screws</p>
<p><i>Optional Accessories</i></p>	<p><u>PCL71</u>: COM / LPT adapter:                  - 1x Parallel (25p D-Sub)                  - 2x Serial RS232 (9p D-Sub) supports 0 / 5 / 12V  <u>POS01</u>: COM / LPT adapter:                  - 1x Parallel (25p D-Sub)                  - 2x Serial RS232 (9p D-Sub) supports 0 / 5 / 12V                  - 2x Serial RS232 (8p RJ45)                  - 1x DIO/RJ11 connector for cash drawer supports 12 / 24V  <u>PF55</u>: Carrying bag</p>
<p><i>Environmental criteria</i></p>	<p>Operating temperature: 0~40 °C                  Humidity: 10~90 %, non-condensing</p>
<p><i>Certification and Compliance</i></p>	<p>EMI: CE, FCC, BSMI                  Safety: CB, BSMI, ETL                  Other compliances: RoHS, ErP Lot6, Energy Star v5.0</p>
<p><i>Conformity</i></p>	<p>This device is classed as a technical information equipment (ITE) in class B and is intended for use in living room and office. The CE-mark approves the conformity by the EU directives:                  (1) 2014/30/EU relating to electromagnetic compatibility (EMC),                  (2) 2014/35/EU relating to Electrical Equipment designed for use within certain voltage limits (LVD),                  (3) 2009/125/EC relating to ecodesign requirements for energy-related products (ErP),                  (4) 2014/53/EU Radio Equipment Directive (RED)</p>

© 2021 by Shuttle Computer Handels GmbH (Germany). All information subject to change without notice . Pictures for illustration purposes only.

**Shuttle XPC all-in-one X50 Series  
Product Comparison**

Model	X50V4	X50V5 Series	X50V6 Series	X50V7(L) Series
<b>Processor</b>	Intel ULV processor Code name: Haswell-U 22 nm, 15 W TDP	Intel ULV processor Code name: Skylake-U 14 nm, 15 W TDP	Intel ULV processor Code name: Kaby Lake-U 14 nm, 15 W TDP	Intel ULV processor Code name: Whiskey Lake-U 14 nm, 15 W TDP
<b>SKUs</b>	<b>X50V4:</b> Celeron 2957U	<b>X50V5:</b> Celeron 3855U <b>X50V5U3:</b> Core i3-6100U	<b>X50V6:</b> Celeron 3865U <b>X50V6U3:</b> Core i3-7100U	<b>X50V7(L):</b> Celeron 4205U <b>X50V7U3(L):</b> Core i3-8145U
<b>Operation System Support</b>	Windows 7 – 64-bit Windows 8.1 – 64-bit Windows 10 – 64-bit Linux – 64-bit	Windows 7 – 64-bit Windows 8.1 – 64-bit Windows 10 – 64-bit Linux – 64-bit	Windows 10 – 64-bit Linux – 64-bit	Windows 10/11 – 64-bit Linux – 64-bit
<b>SSD Card Support</b>	mSATA	M.2-2280BM (PCIe x4, SATA)	M.2-2280BM (PCIe x4, SATA)	M.2-2280BM (PCIe x4, SATA)
<b>Memory Support</b>	Max. 1x 8 GB DDR3L-1600 204-pin SO-DIMM	Max. 1x 16 GB DDR3L-1600 204-pin SO-DIMM	Max. 2x 16 GB DDR4-2133 260-pin SO-DIMM	Max. 2x 32 GB DDR4-2133 (Celeron) DDR4-2400 (Core i3) 260-pin SO-DIMM
<b>USB</b>	2x USB 3.2 Gen 1 4x USB 2.0 1x USB 2.0 onboard	2x USB 3.2 Gen 1 4x USB 2.0 1x USB 2.0 onboard	2x USB 3.2 Gen 1 4x USB 2.0 1x USB 2.0 onboard	4x USB 3.2 Gen 1 2x USB 2.0 1x USB 2.0 onboard
<b>Wired LAN</b>	Realtek RTL8411 Gigabit LAN	Intel i219LM Gigabit LAN	Intel i211 Gigabit LAN	Intel i211 Gigabit LAN
<b>Wireless LAN</b>	Realtek RTL8188EE IEEE 802.11n Internal antenna	Realtek RTL8821AE IEEE 802.11ac + BT 2x internal antenna	Realtek RTL8188EE IEEE 802.11n Internal antenna	Realtek RTL8821CE-CG IEEE 802.11ac, BT 4.2 (not for L models *) 2x internal antenna
<b>Perforation for optional antenna</b>	1x 9 mm for TV/SAT	1x 9 mm for TV/SAT	1x 9 mm for TV/SAT	2x 6.3 mm for WLAN/LTE
<b>Power adapter</b>	65 W / 19 V	65 W / 19 V (supports 60 W / 12 V)	65 W / 19 V (supports 60 W / 12 V)	65 W / 19 V (supports 60 W / 12 V)
<b>TPM</b>	-	Firmware TPM v2.0 (since 2016-09-13)	Firmware TPM v2.0	Firmware TPM v2.0

\*) no WLAN module is included in the X50V7L and X50V7U3L models.



© 2021 by Shuttle Computer Handels GmbH (Germany). All information subject to change without notice. Pictures for illustration purposes only.

Shuttle XPC all-in-one – Comparison

Touch Display	Model	Processor	Colour	UPC Code
<b>11.6"</b> 1366 x 768 pixels Capacitive	<b>P20U</b>	Intel Celeron 3865U	Black	887993001487
<b>15.6"</b> 1366 x 768 pixels Resistive	<b>X50V7(L)</b>	Intel Celeron 4205U	Black	887993002149 887993003559
			White	887993002156
	<b>X50V7U3(L)</b>	Intel Core i3-8145U	Black	887993002163 887993003566
			White	887993002170
<b>15.6"</b> 1920 x 1080 pixels Capacitive	<b>P51U</b>	Intel Celeron 4205U	Black	887993001791
	<b>P51U3</b>	Intel Core i3-8145U	Black	887993002187
<b>19.5"</b> 1600 x 900 pixels Capacitive	<b>P90U</b>	Intel Celeron 3865U	Black	887993001661
			White	887993001890
	<b>P90U3</b>	Intel Core i3-7100U	Black	887993001685
			White	887993001906
<b>P90U5</b>	Intel Core i5-7200U	Black	887993001678	

**P20U** (11.6")



**X50V7** (15.6")



**P51U** (15.6")



**P90U** (19.5")

