
BIOS User Manual

For the : WL/AL/EL Series

TABLE OF CONTENTS

Notice	1
BIOS Setup.....	2
■ 1.1 About BIOS Setup.....	2
■ 1.1.1 When to Use BIOS Setup ?.....	2
■ 1.1.2 How to run BIOS Setup ?	2
■ 2.2 BIOS Setup Menu (WL series only)	4
➤ Main Menu	4
➤ Advanced Menu	5
➤ Security Menu	7
➤ Boot Menu.....	8
➤ Exit Menu	9
■ 2.3 BIOS Setup Menu (EL/AL series only).....	10
➤ Main Menu	10
➤ Advanced Menu	11
➤ Security Menu	13
➤ Boot Menu.....	14
➤ Exit Menu	15

Notice

The illustrations in this user's manual are for reference only.
Actual product specifications may vary with territories.

The information in this user's manual is subject to change without notice.

THE MANUFACTURER OR RESELLER SHALL NOT BE LIABLE FOR
ERRORS OR OMISSIONS CONTAINED IN THIS MANUAL AND SHALL NOT
BE LIABLE FOR ANY CONSEQUENTIAL DAMAGES, WHICH MAY RESULT
FROM THE PERFORMANCE OR USE OF THIS MANUAL.

The information in this user's manual is protected by copyright laws. No part of
this manual may be photocopied or reproduced in any form without prior written
authorization from the copyright owners.

Product names mentioned herein may be trademarks and/or registered
trademarks of their respective owners/companies.

The software described in this manual is delivered under a license agreement.
The software may be used or copied only in accordance with the terms of the
agreement.

This product incorporates copyright protection technology that is protected by
U.S. patents and other intellectual property rights.

Reverse engineering or disassembly is prohibited.

Do not throw this electronic device into the trash when discarding. To minimize
pollution and ensure utmost protection of the global environment, please
recycle.

For more information on the Waste from Electrical and Electronics Equipment
(WEEE) regulations, visit
http://ec.europa.eu/environment/waste/weee/index_en.htm

■ 1.1 About BIOS Setup

The default BIOS (Basic Input/Output System) is already properly configured and optimized, there is normally no need to run this utility.

■ 1.1.1 When to Use BIOS Setup ?

You may need to run the BIOS Setup when:

- An error message appears on the screen during the system booting up and is requested to run SETUP.
- You want to change the default settings for customized features.
- You want to reload the default BIOS settings.



CAUTION! We strongly recommend that you change the BIOS settings only with the help of a trained service personnel.

■ 1.1.2 How to run BIOS Setup ?


To run the BIOS Setup Utility, turn on the Box-PC and press the [Del] or [F2] key during the POST procedure.

If the message disappears before you respond and you still wish to enter Setup, either restart the system by turning it OFF and ON, or simultaneously pressing [Ctrl]+[Alt]+[Del] keys to restart.


The setup function only can be invoked by pressing [Del] or [F2] key during POST that provide an approach to change some setting and configuration the user prefer, and the changed values will save in the NVRAM and will take effect after the system rebooted.

Press [F7] key for Boot Menu.

· When OS support is Windows 11 :

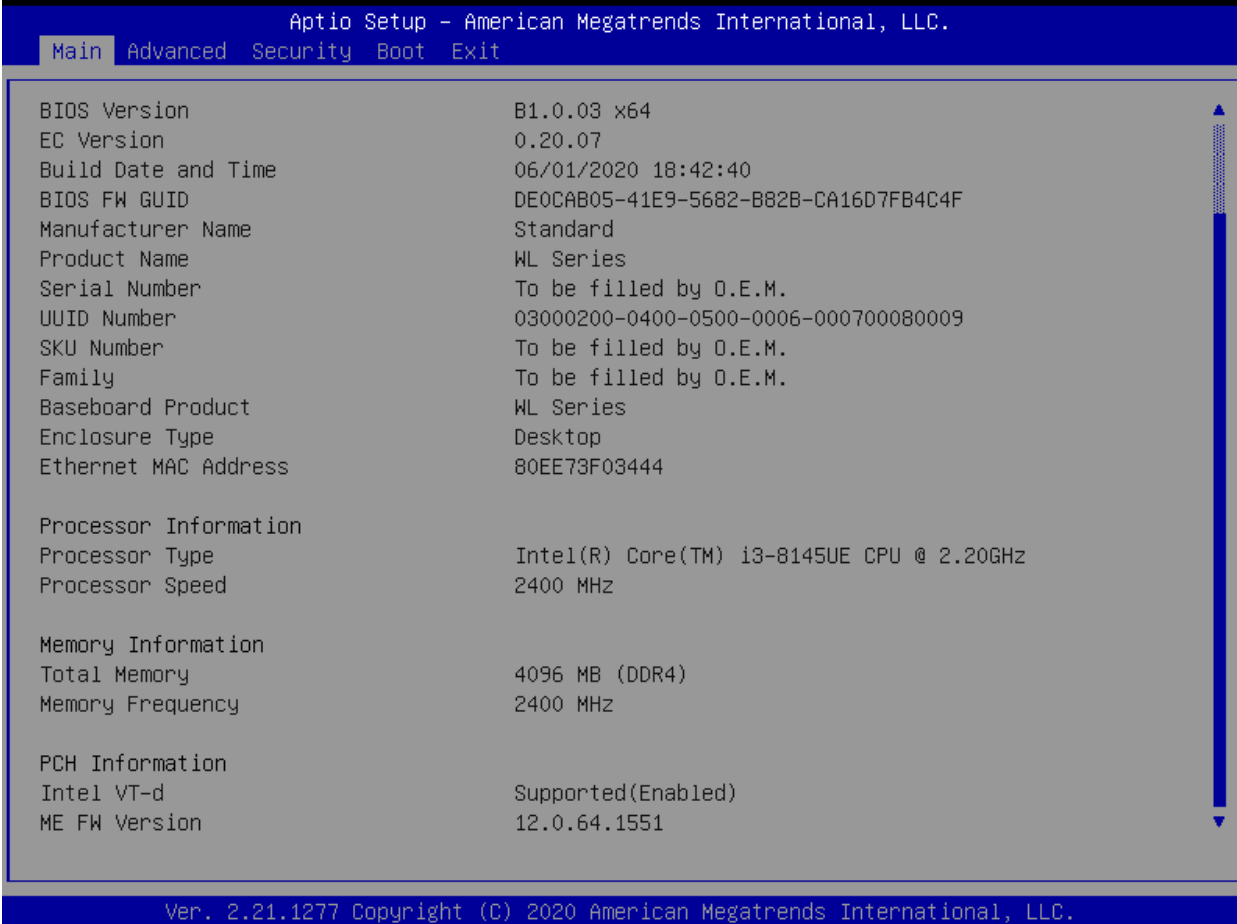
1. Click the "Start  menu" and select "Settings".
2. Select "Windows Update" and Click "Advanced options".
3. Click "Recovery".
4. Under "Advanced startup", click "Restart now".
The system will restart and show the Windows 11 boot menu.
5. Select "Troubleshoot".
6. Choose "Advanced options".
7. Select "UEFI Firmware Settings".
8. Click "Restart" to restart the system and enter UEFI (BIOS).

· When OS support is Windows 10 :

1. Click the "Start  menu" and select "Settings".
2. Select "Update and Security".
3. Click "Recovery".
4. Under "Advanced startup", click "Restart now".
The system will restart and show the Windows 10 boot menu.
5. Select "Troubleshoot".
6. Choose "Advanced options".
7. Select "UEFI Firmware Settings".
8. Click "Restart" to restart the system and enter UEFI (BIOS).

■ 2.2 BIOS Setup Menu (WL series only)

➤ Main Menu



```
Aptio Setup - American Megatrends International, LLC.
Main Advanced Security Boot Exit

BIOS Version           B1.0.03 x64
EC Version             0.20.07
Build Date and Time    06/01/2020 18:42:40
BIOS FW GUID          DE0CAB05-41E9-5682-B82B-CA16D7FB4C4F
Manufacturer Name     Standard
Product Name          WL Series
Serial Number         To be filled by O.E.M.
UUID Number           03000200-0400-0500-0006-000700080009
SKU Number            To be filled by O.E.M.
Family                To be filled by O.E.M.
Baseboard Product     WL Series
Enclosure Type        Desktop
Ethernet MAC Address   80EE73F03444

Processor Information
Processor Type         Intel(R) Core(TM) i3-8145UE CPU @ 2.20GHz
Processor Speed       2400 MHz

Memory Information
Total Memory          4096 MB (DDR4)
Memory Frequency      2400 MHz

PCH Information
Intel VT-d            Supported(Enabled)
ME FW Version         12.0.64.1551

Ver. 2.21.1277 Copyright (C) 2020 American Megatrends International, LLC.
```

- System Time/System Date

Use this option to change the system time and date. Highlight System Time or System Date using the <Arrow> keys. Enter new values through the keyboard. Press the <Tab> key or the <Arrow> keys to move between fields. The date must be entered in MM/DD/YY format. The time is entered in HH:MM:SS format.

➤ Advanced Menu



- Wake on LAN

Enable/Disable integrated LAN to wake the system.

- PowerOn by RTC Alarm

Enable/Disable system wake on Alarm event. When enable, System will wake on the hr:mm:sec specified

- Restore On AC Power Loss

Specify what state to go to when power is re-applied after a power failure (G3 state).

- SATA1/M.2 SATA/M.2 PCIE

Enable/Disable Connect port.

- SIO Configuration

Set SIO configuration.

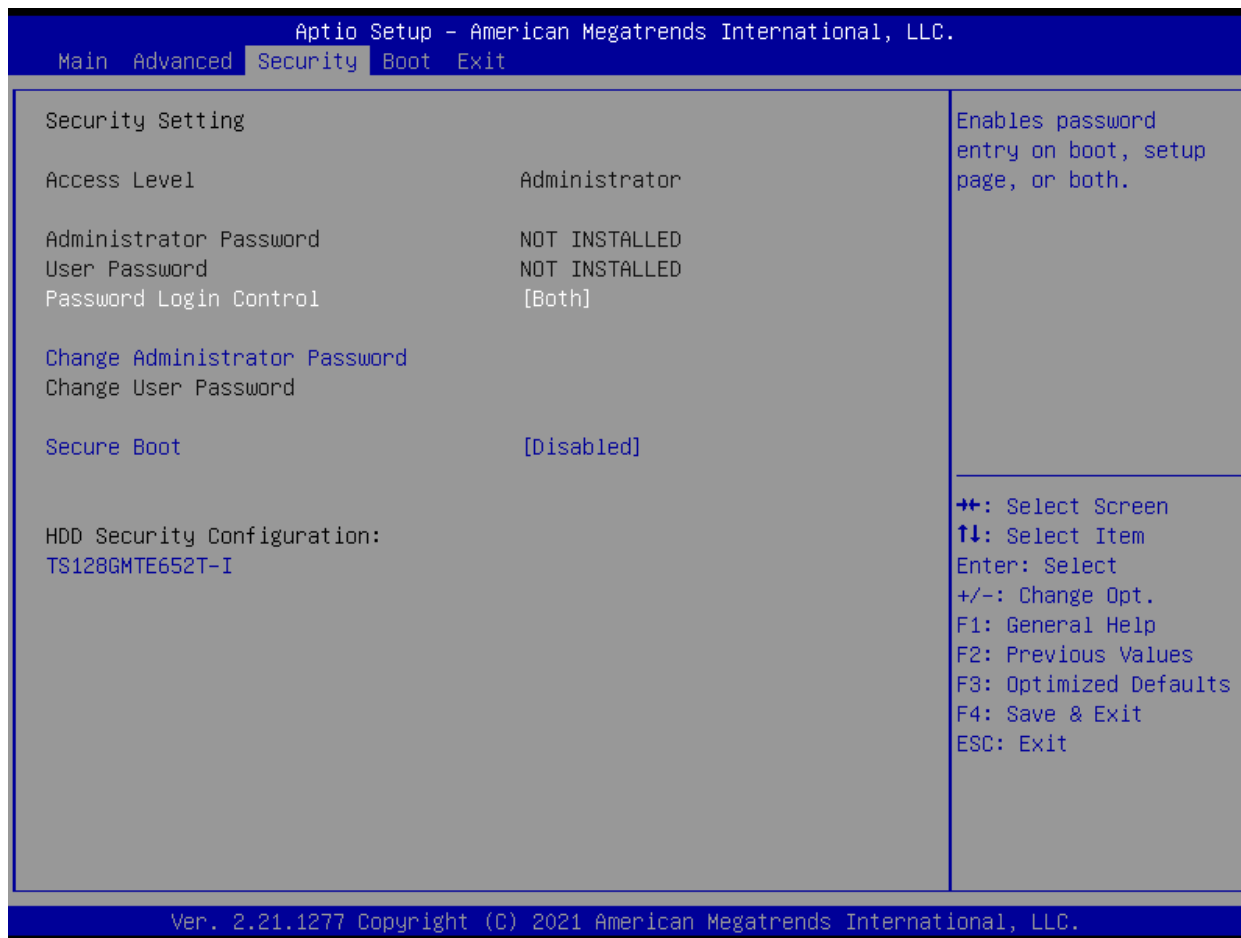
- External Display support

Select Type for External Display board.

- Trusted Computing

Trusted Computing (TPM) setting

➤ Security Menu



- Password Login Control : [Setup / Boot / Both]

It's the timing for password prompt. If the user choose the setup , the system only ask the password when user get into the setup. If the user choose the boot, the system only ask the password when boot.

- Change Administrator Password

It's the option for administrator password.

- Change User Password

It's the option for user password.

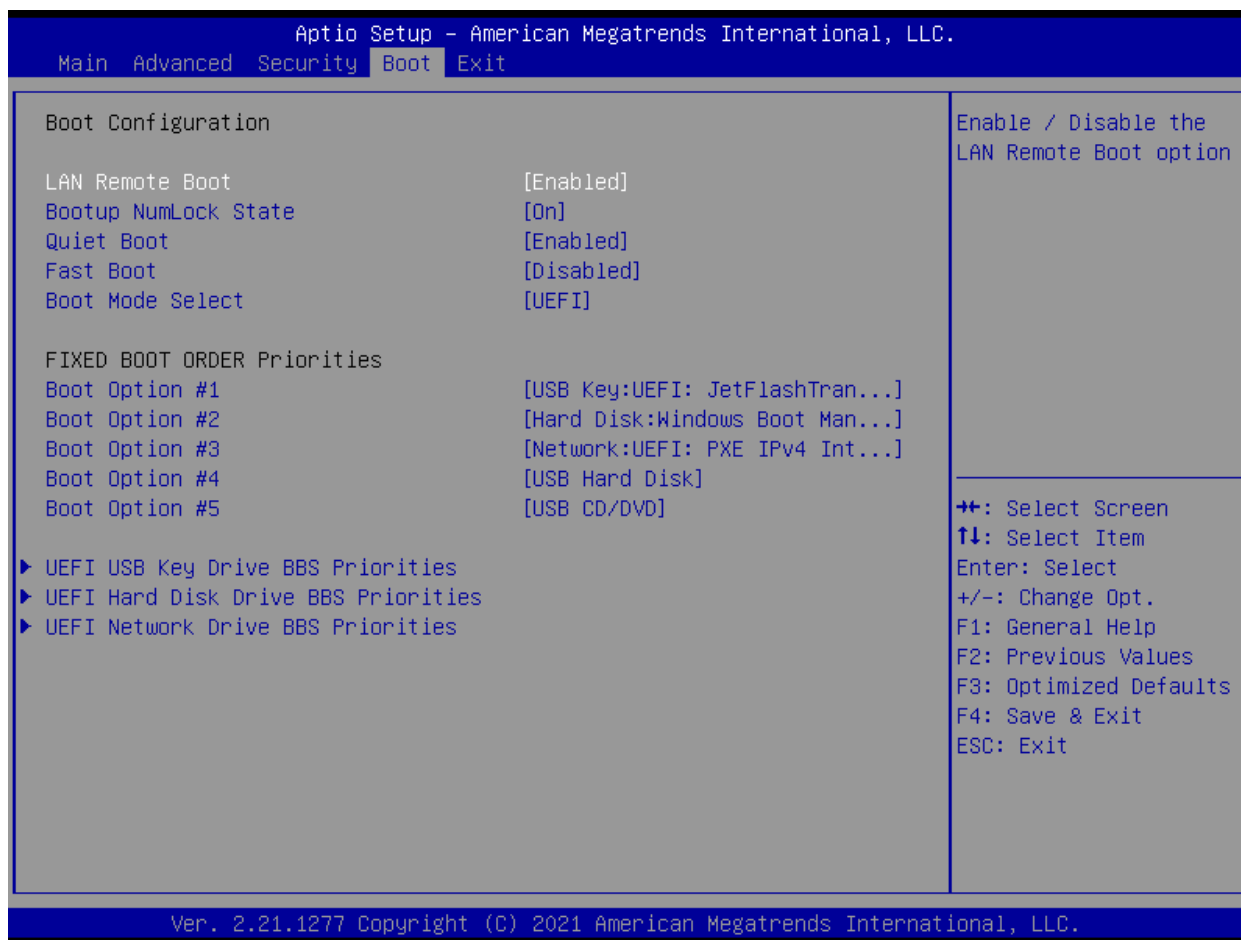
- Secure Boot

Enable / Disable the Secure Boot Support.

- Secure Boot Mode

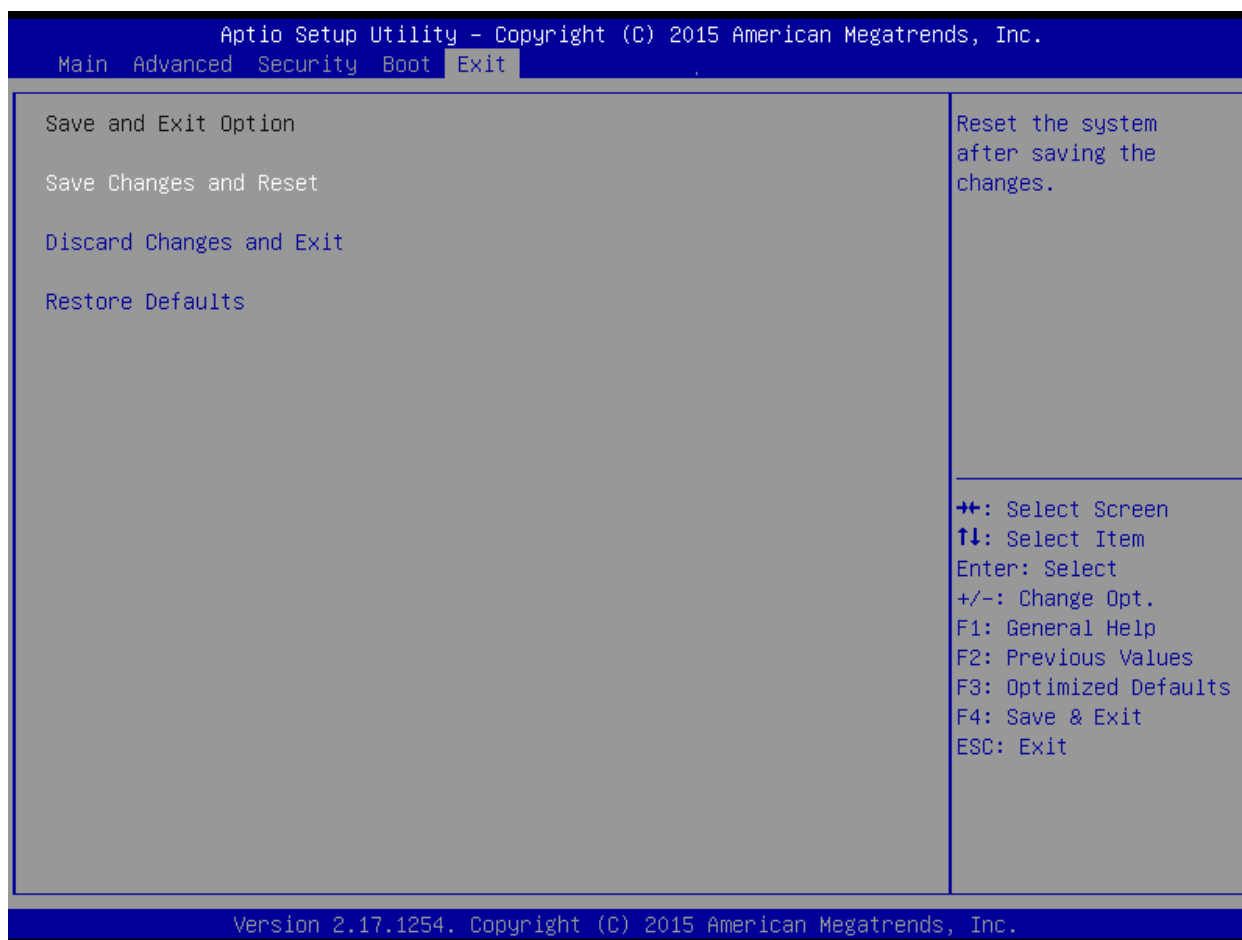
Set the Secure Boot Mode status.

➤ Boot Menu



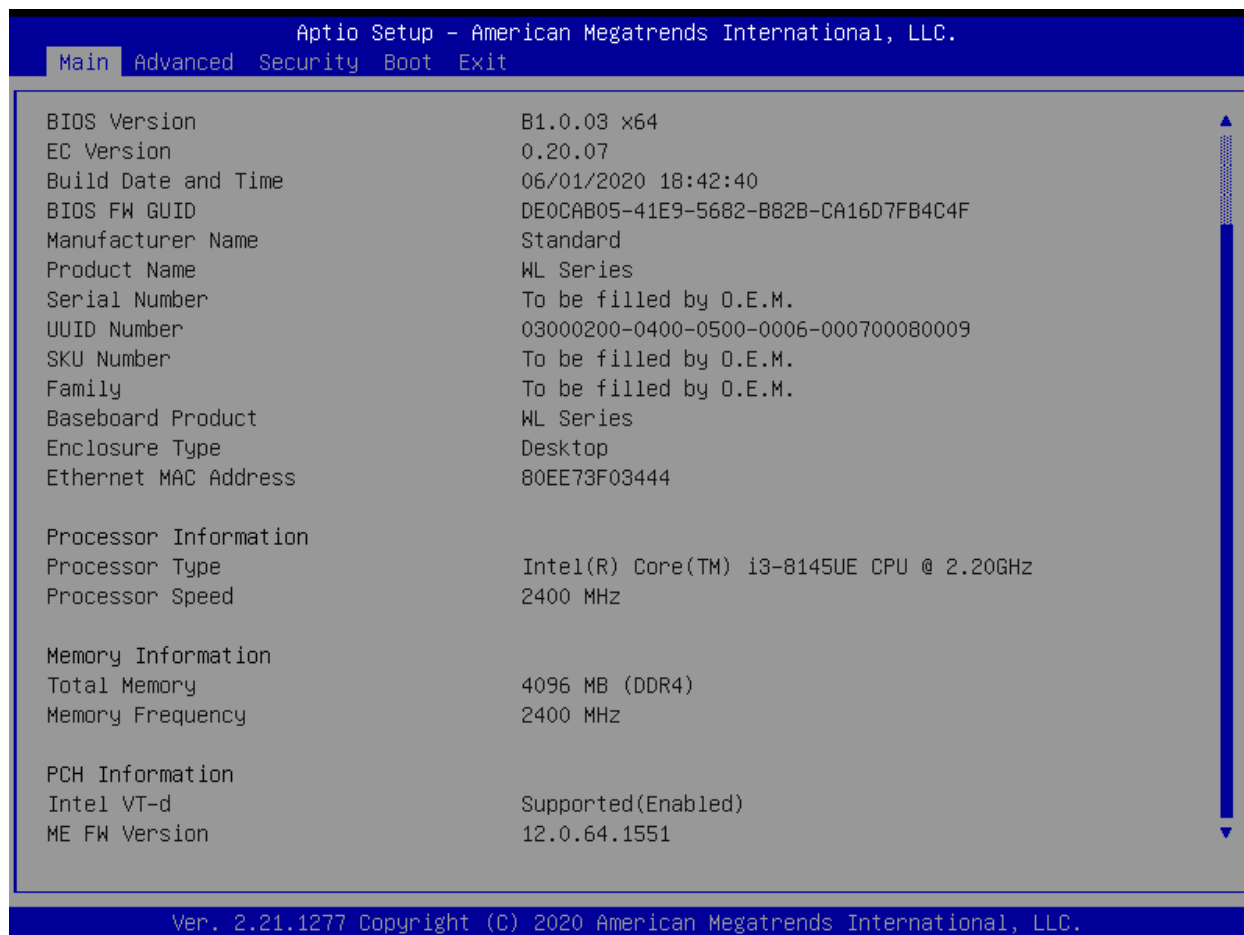
- LAN Remote Boot
Enable/Disable UEFI network stack.
- Bootup NumLock state
Select the keyboard NumLock state.
- Quiet Boot
Enables/disables Quiet Boot option.
- Fast Boot
Enables/disables Fast Boot option.
- Boot mode select
The default setting is UEFI because secure boot enable.

➤ Exit Menu



■ 2.3 BIOS Setup Menu (EL/AL series only)

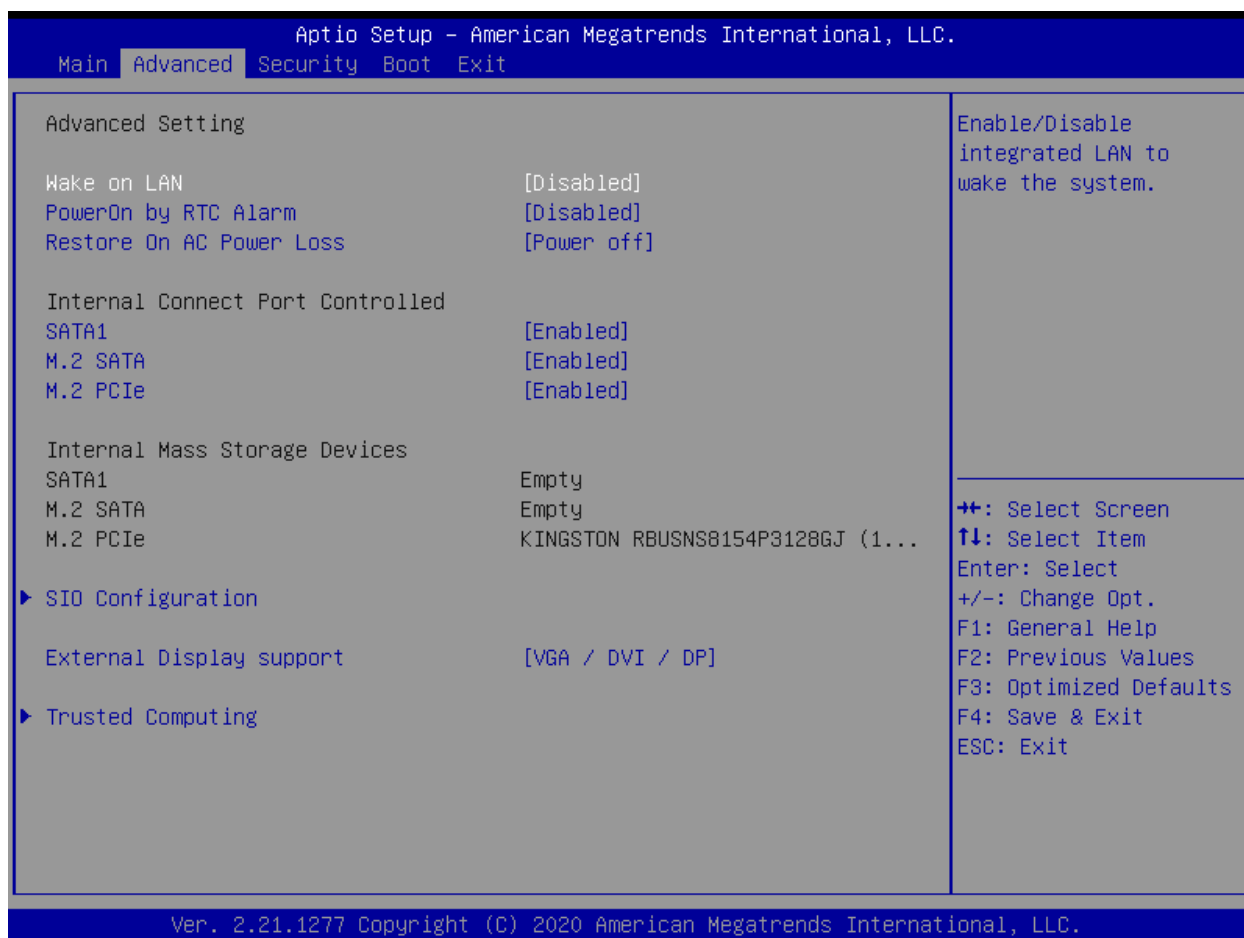
➤ Main Menu



- System Time/System Date

Use this option to change the system time and date. Highlight System Time or System Date using the <Arrow> keys. Enter new values through the keyboard. Press the <Tab> key or the <Arrow> keys to move between fields. The date must be entered in MM/DD/YY format. The time is entered in HH:MM:SS format.

➤ Advanced Menu



- Wake on LAN

Enable/Disable integrated LAN to wake the system.

- PowerOn by RTC Alarm

Enable/Disable system wake on Alarm event. When enable, System will wake on the hr:mm:sec specified

- Restore On AC Power Loss

Specify what state to go to when power is re-applied after a power failure (G3 state).

- SATA1/M.2 SATA/M.2 PCIE

Enable/Disable Connect port.

- SIO Configuration

Set SIO configuration.

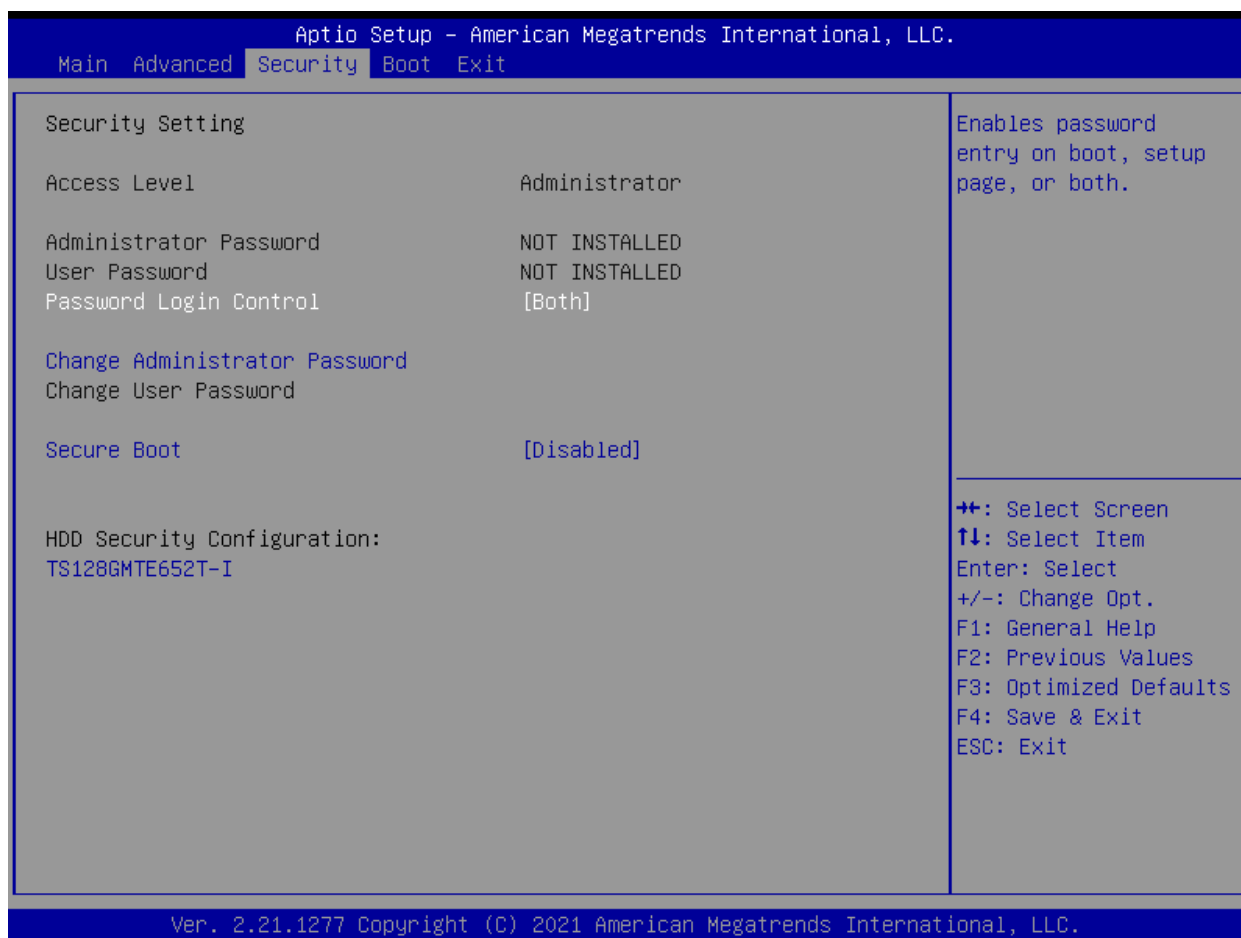
- External Display support

Select Type for External Display board.

- Trusted Computing

Trusted Computing (TPM) setting

➤ Security Menu



- Password Login Control : [Setup / Boot / Both]

It's the timing for password prompt. If the user choose the setup , the system only ask the password when user get into the setup. If the user choose the boot, the system only ask the password when boot.

- Change Administrator Password

It's the option for administrator password.

- Change User Password

It's the option for user password.

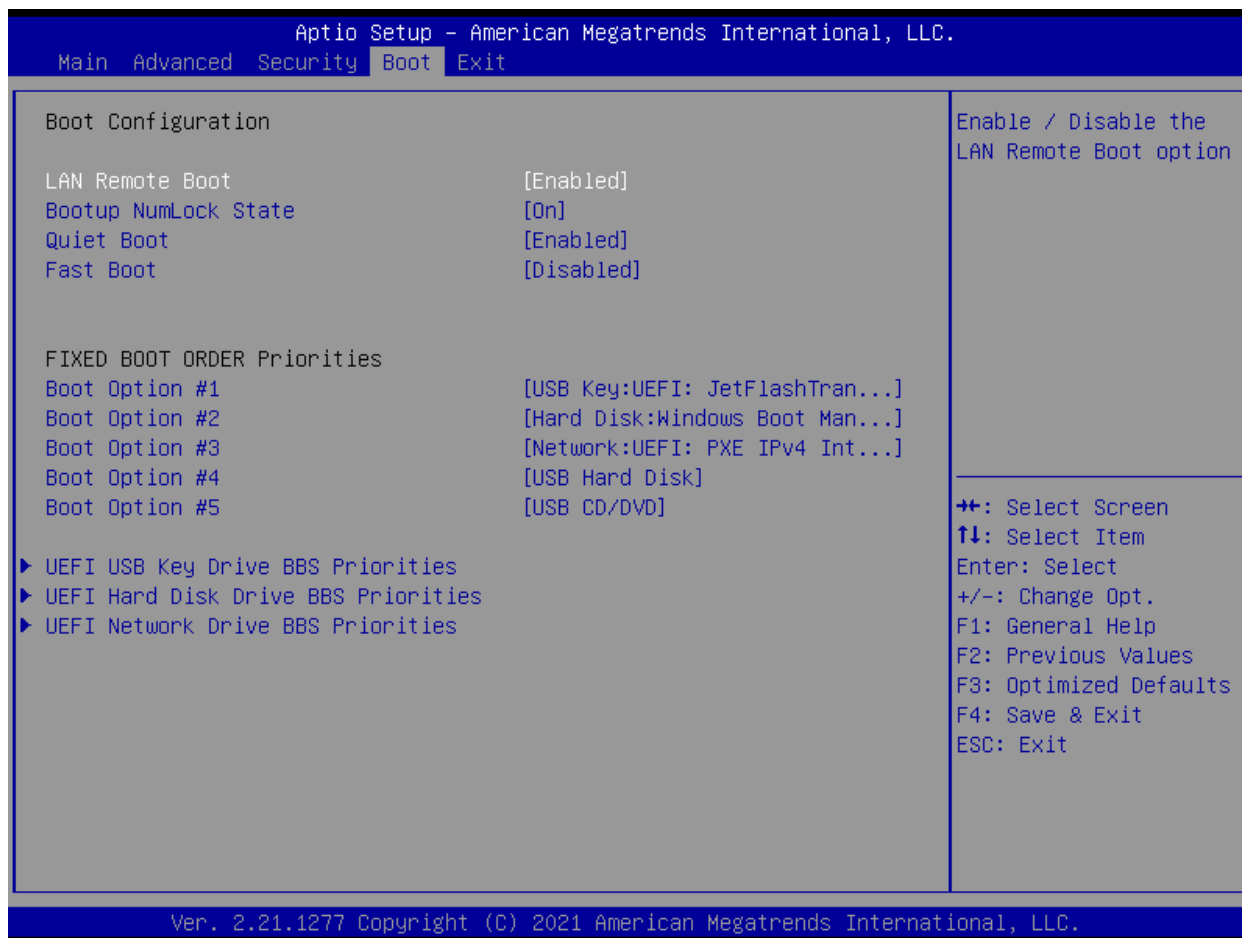
- Secure Boot

Enable / Disable the Secure Boot Support.

- Secure Boot Mode

Set the Secure Boot Mode status.

➤ Boot Menu



- LAN Remote Boot
Enable/Disable UEFI network stack.
- Bootup NumLock state
Select the keyboard NumLock state.
- Quiet Boot
Enables/disables Quiet Boot option.
- Fast Boot
Enables/disables Fast Boot option.

➤ Exit Menu

