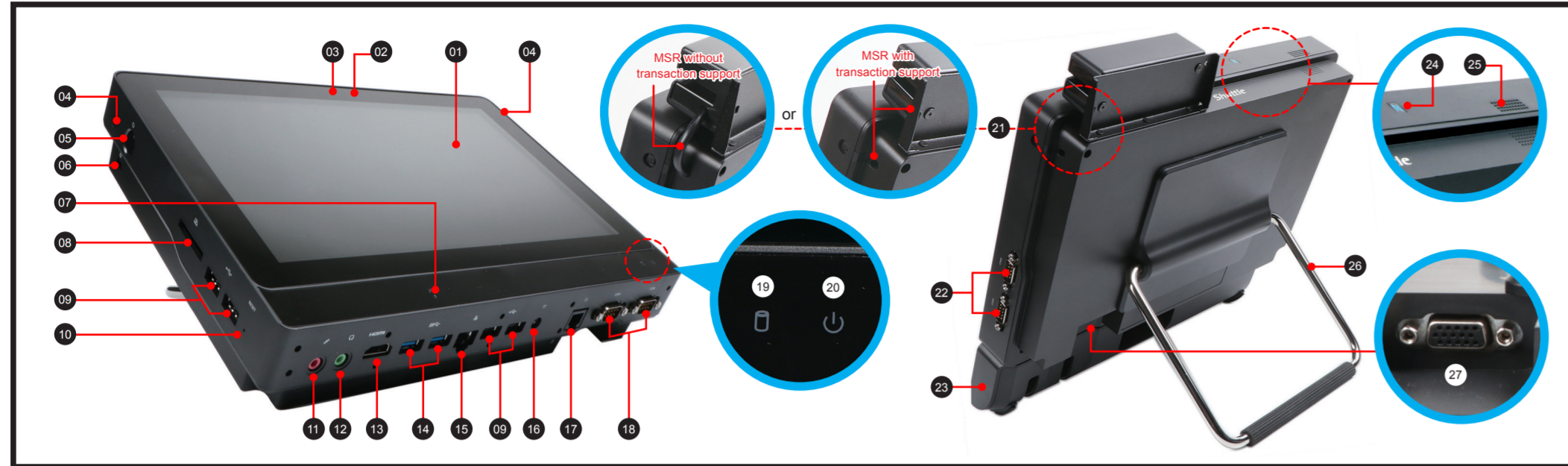


# P20U Series Quick Guide [English]

## Product Overview

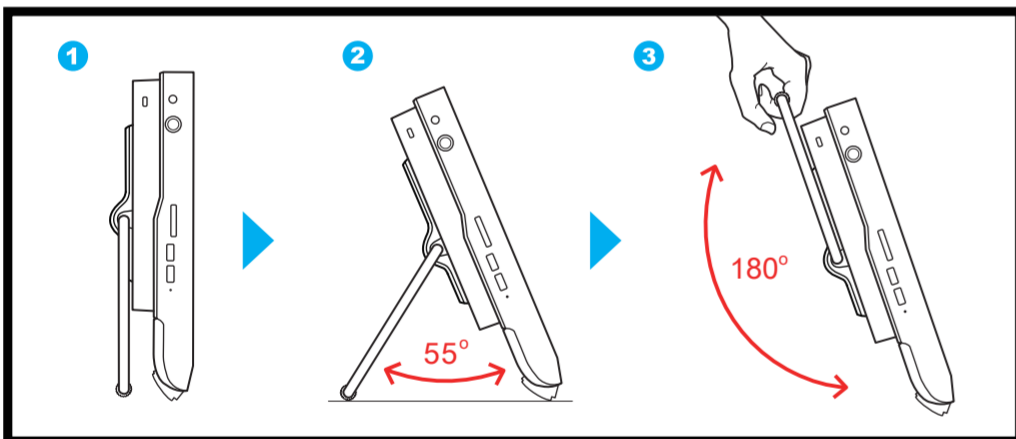


- 01 LCD display (Multi-touch)
- 02 CCD indicator
- 03 Webcam
- 04 4G external antenna x2 (optional)
- 05 Power button
- 06 Kensington® lock hole
- 07 Microphone
- 08 SD card reader
- 09 USB 2.0 ports
- 10 Clear CMOS
- 11 Microphone jack
- 12 Headphone / Line-out jack
- 13 HDMI port
- 14 USB 3.1 Gen 1 ports
- 15 LAN (RJ45) port
- 16 DC In
- 17 Cash drawer (RJ11) port (optional)
- 18 COM 1 and COM 2 ports
- 19 Hard disk drive LED
- 20 Power LED
- 21 MSR with/without transaction support (optional)
- 22 COM 3 and COM 4 ports (optional)
- 23 Line collection box
- 24 NFC (optional)
- 25 Mono speaker
- 26 Stand / Handle
- 27 D-Sub (VGA) port

## Placing on the desk

To place the machine on the desk and to carry it, do the following:

- Place the P20U on a flat surface such as a table.
- Pull the stand upwards to an angle of 55°.
- To carry or move your P20U fully extend the angle to 180°.



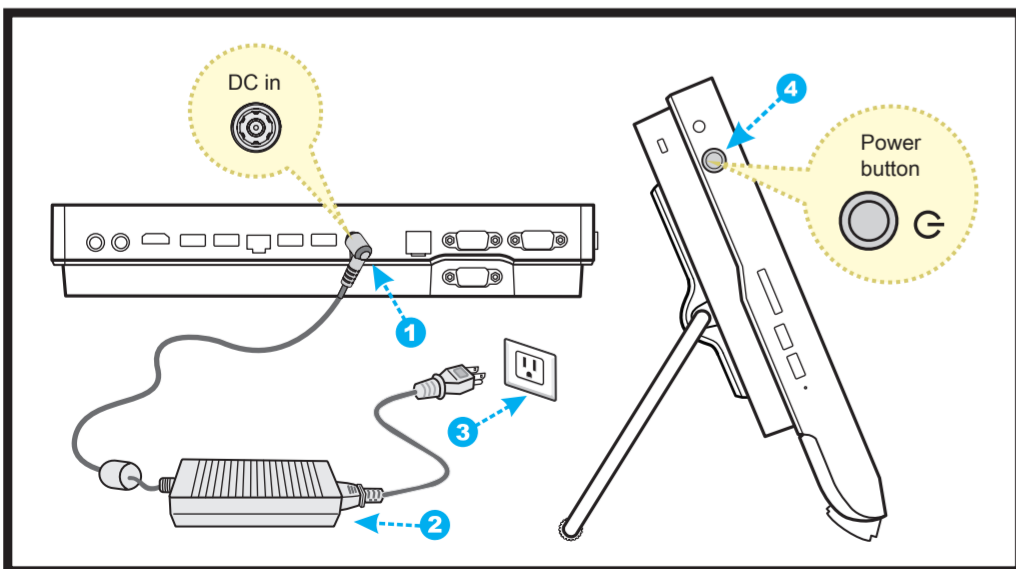
## Follow the steps 1 ~ 3 to remove the line collection box cover



## Powering on the system

Follow the steps 1 ~ 3 below to connect the AC adapter to the "DC in jack".

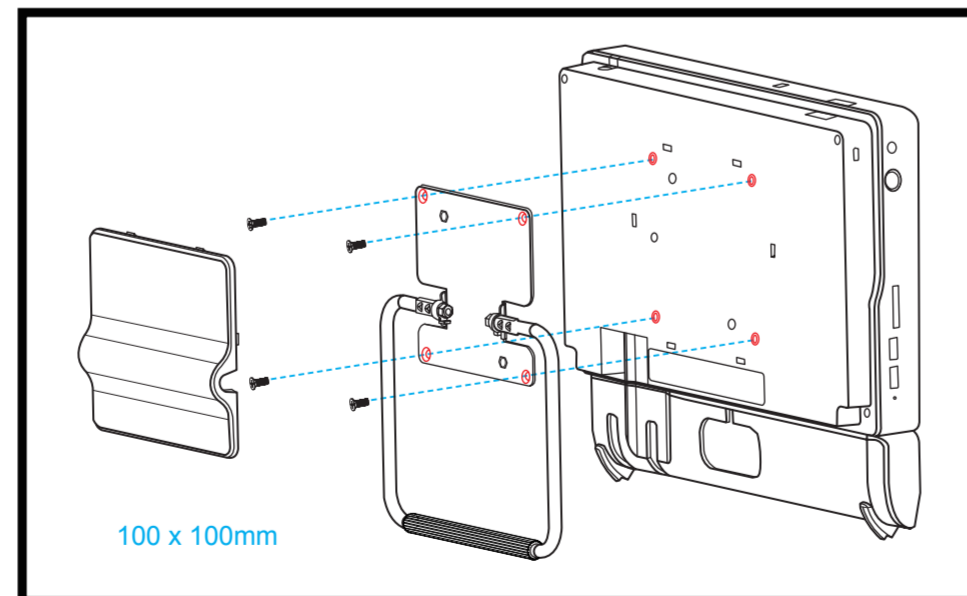
- Press the "Power button" to turn on the system.



## Cleaning the screen

Follow these guidelines for cleaning the outside and handling the screen of the computer:  
 Turn off the system and disconnect all cables.  
 Use a damp or cleaning cloth, ideally soft, lint-free and lightly humid to wipe the screen.

## VESA mounting it to the wall



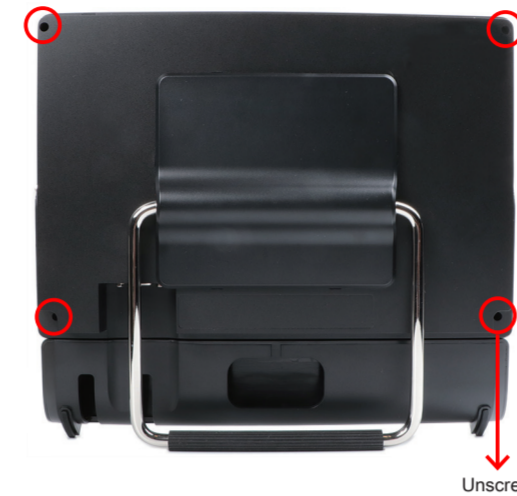
If you are mounting your P20U to the wall, remove the cover on the back of the P20U first. Unscrew four screws of the stand mount and remove the stand. The VESA standard lets users mount it on to walls easily. Please refer to the user guide of the wall/arm mount kit you bought separately to install it.

Note : The P20U can be mounted to a wall using a VESA compatible 100 x 100 mm wall/arm bracket.

## A. Begin Installation

For safety reasons, please ensure that the power cord is disconnected before opening the case.

- Unscrew four screws of the back cover.

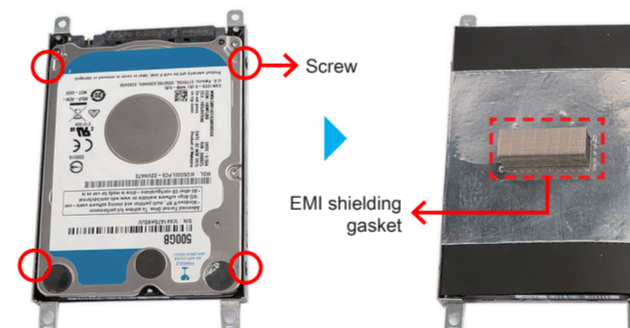


- Pull the back cover upward and remove it.

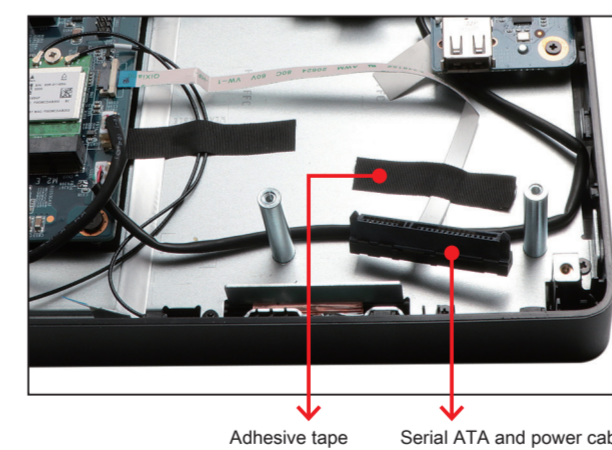


## B. HDD or SSD Installation

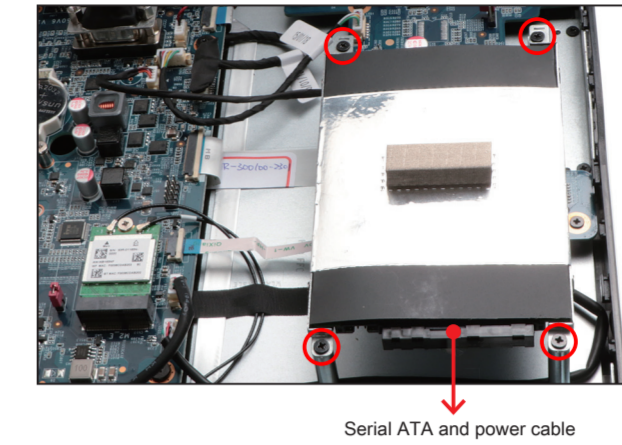
- Place an HDD or SSD in the rack and secure with the four screws from the sides. Affix the EMI shielding gasket with the adhesive tape, as shown.



- Tear off the adhesive tape of the serial ATA and power cable.



- Connect the Serial ATA and power cable to the HDD or SSD. Slide the rack into the chassis and refasten the screws.

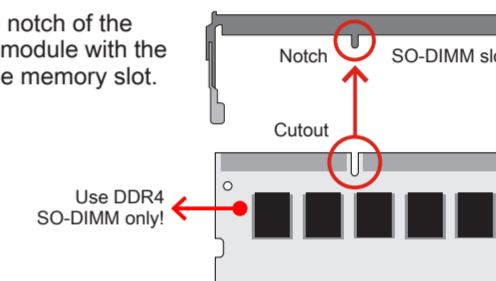


## C. Memory Module Installation

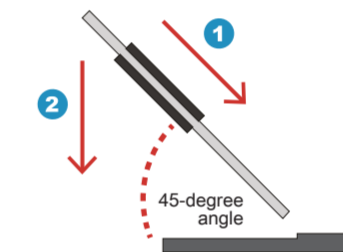
This mainboard does only support 1.2 V DDR4 SO-DIMM memory modules.

- Locate the SO-DIMM slot on the mainboard.

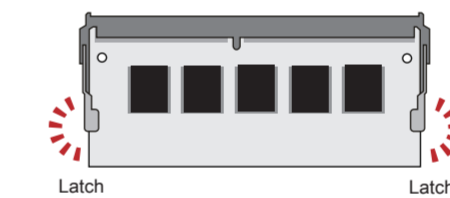
- Align the notch of the memory module with the one of the memory slot.



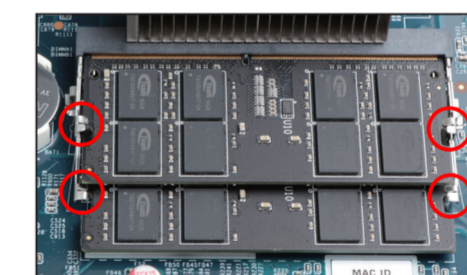
- Gently insert the module into the slot in a 45-degree angle.



- Carefully push down the memory module until it snaps into the locking mechanism.

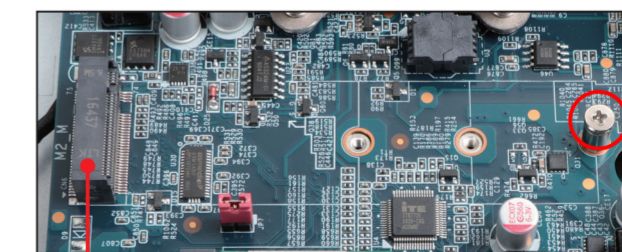


- Repeat the above steps to install additional memory modules, if required.



## D. Component Installation

- As shown, unfasten the screw first.

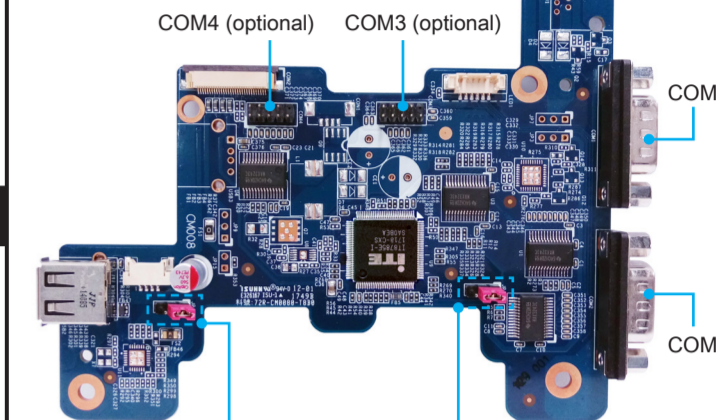


M.2 2242/2260/2280 M key slot

- Install the M.2 device into the M.2 slot and secure with the screw.



## Daughter board (CM008)



- JP11: USB2 \ USB3 power jumper
- Pin1-2 = +5V (Default)
  - Pin2-3 = +5VS
- JP13: COM port quantity jumper
- Pin1-2 = COM port x 2 (Default)
  - Pin2-3 = COM port x 3
  - COM port x 4

## E. Complete

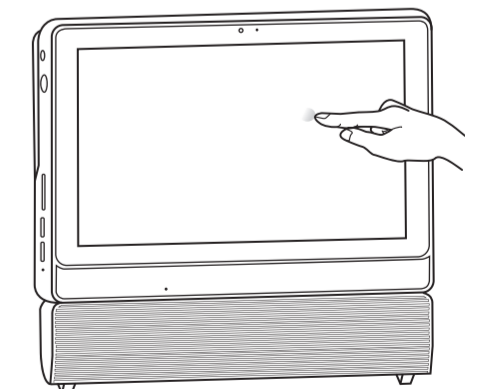
- Replace the back cover and refasten the screws.



- Complete.

## How to use the Touch Panel

The touch of your finger replaces the input devices and is all you need to operate the P20U.



## Safety Information

Read the following precautions before setting up a Shuttle P20U.

**CAUTION** Do not walk on the power cord or allow anything to rest on it. Danger of explosion if battery is incorrectly replaced. Replace only with the same or equivalent type recommended by the manufacturer. Dispose of used batteries according to the manufacturer's instructions.

- This device complies with Part 15 of the FCC Rules. Operation is subject to the following two conditions:
  - this device may not cause harmful interference, and
  - this device must accept any interference received, including interference that may cause undesired operation.