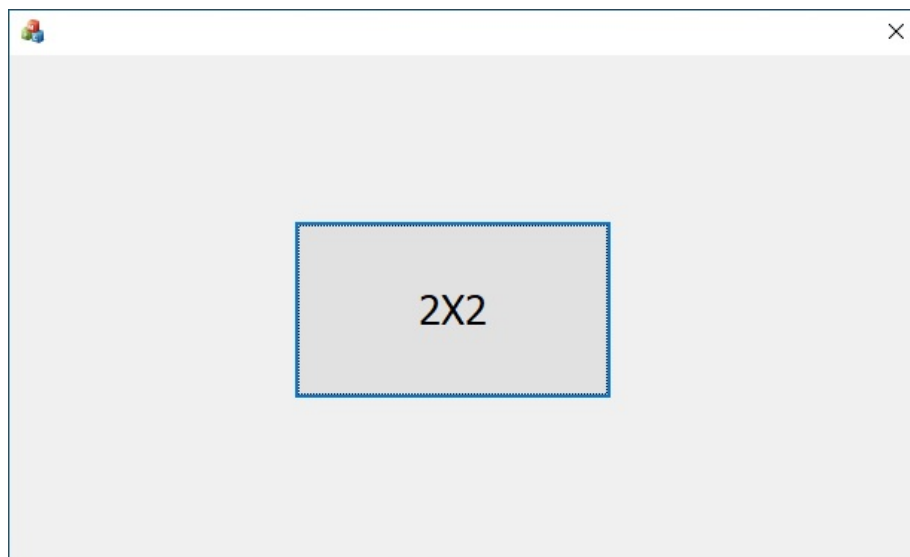


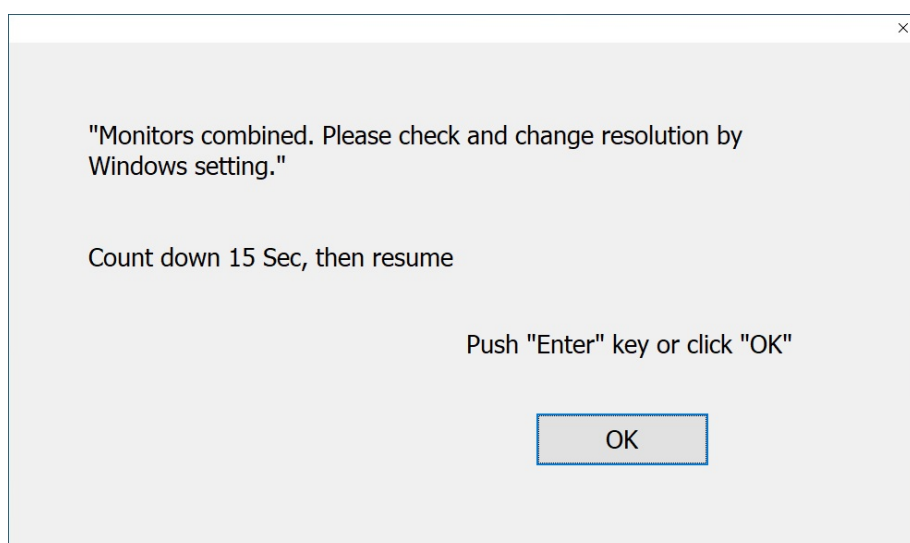
## Combine Display QuickGuide

Notice: Please make sure all monitors are the same brand, size and model.

1. Update Intel Graphics driver to latest version. (Ex. after 101.6325)
2. Please unzip the Combine display tool.
3. Click the VC\_redist\_x64.exe to install Microsoft VISUAL C++ Redistributable.
4. Restart system.
5. Click Combine\_2x2.exe to open the Combine display tool.
6. Click 2x2 button to combine all monitors.

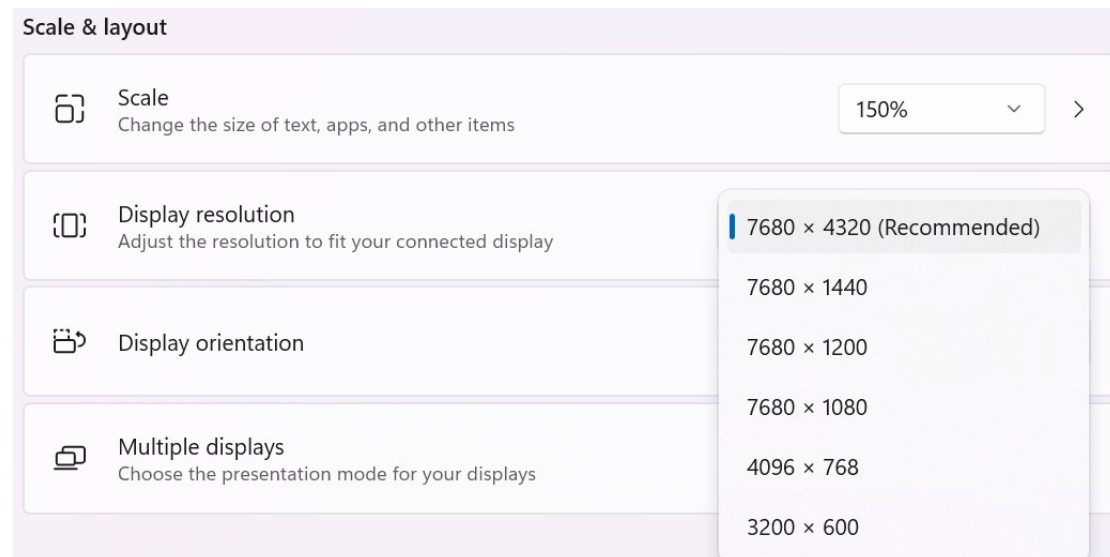


7. Please click OK before the countdown 15 seconds.

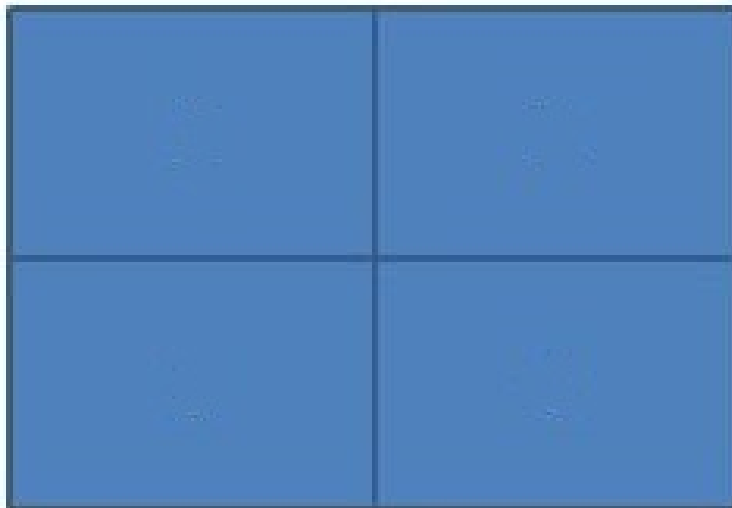


8. Please change your resolution settings.

(The maximum resolution options available will depend on the specifications of the monitor you are using. FHD = 3840x2160, 4K = 7680x4320)



9. The following picture is an example of the layout after all monitors are combined. You can plug and unplug cables to change the display position of your monitors while the displays are combined.



Note: The Combine display tool will keep your combined state even if you restart or shut down the system.

10. If you want to cancel the combined mode, please click Combine\_2x2.exe and then click Resume button, all monitors will return to the state they were in before the combine.

