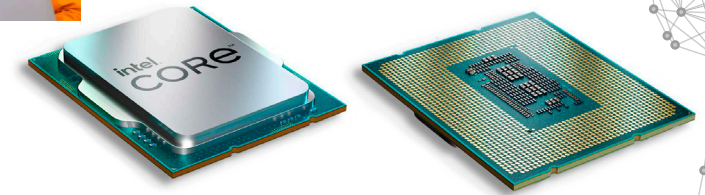
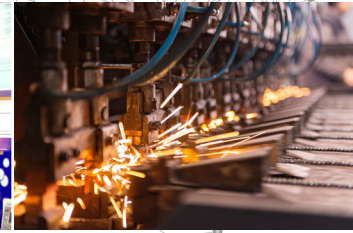
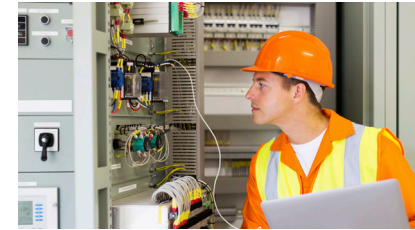
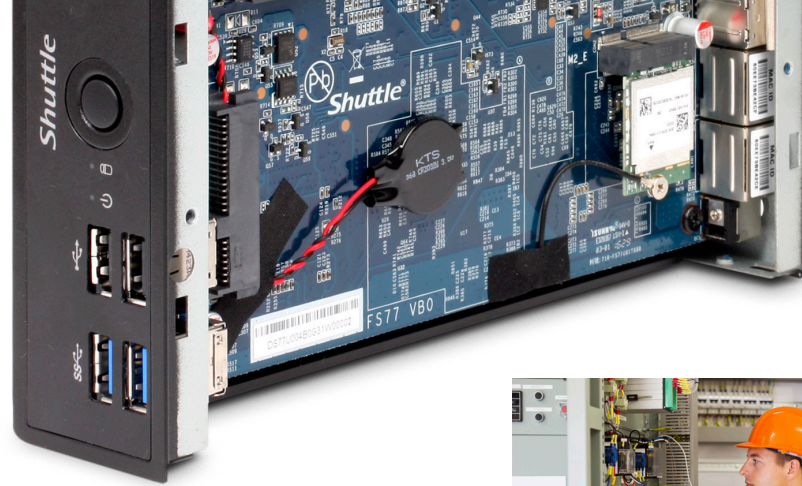
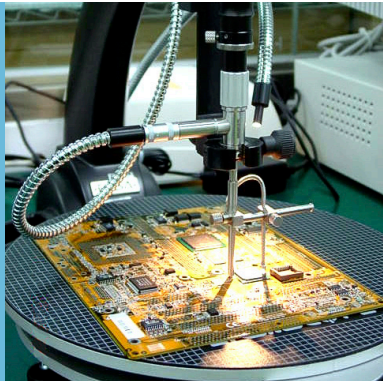


*Shuttle*<sup>®</sup>

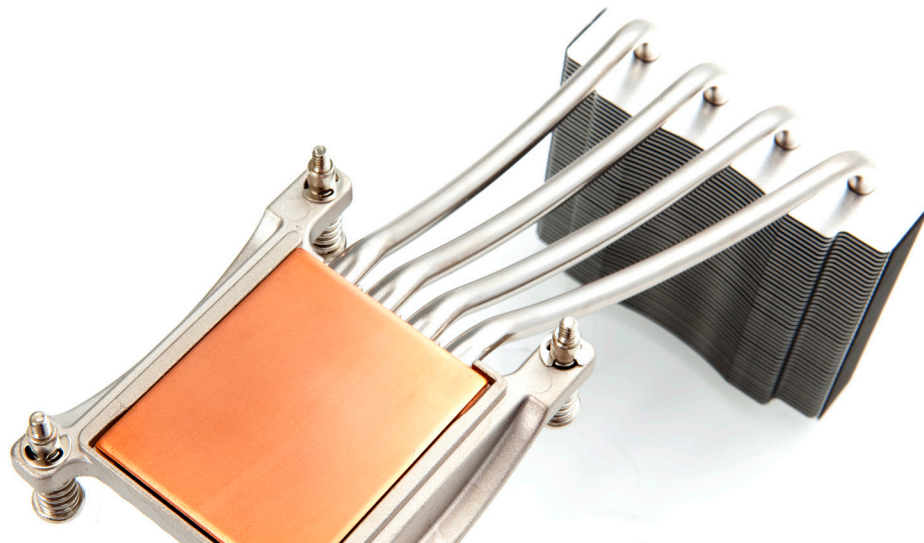
*PRODUCTS 2024*





## WELCOME TO THE WORLD OF SPACE-SAVING MINI PCs

It all began in 1983. We started early and have been a genuinely pioneering force in the industry since 2001. Over the past 23 years, we have launched an array of space-saving and energy-efficient PCs for every area of application. The unique feature of our machines is the use of sophisticated cooling concepts for minimum operating noise. We manufacture reliable Slim PCs, Mini PCs, and All-in-One PCs for the office – and for extremely demanding professional applications.



## COMPANY PROFILE

The principal Taiwanese company Shuttle Inc. was founded in Taipei, Taiwan in 1983. The listed, globally operating company is represented by various subsidiaries around the world. Shuttle Computer Handels GmbH has been based in Elmshorn, Germany since 1994 and is the European head office. Many years of experience as a manufacturer of high-quality mainboards culminated in 2001 in the presentation of the world's first Mini-PC, the SV24. This milestone is regarded as a turning point, and since then Shuttle has specialised in developing and manufacturing innovative Mini-PCs. Its core business focusing on the B2B sector is the XPC brand and the concept of Barebone PCs which already feature key components and can be manufactured to produce complete systems that suit individual requirements.

Shuttle has now successfully expanded its product range to include solutions for vertical markets such as digital signage, POS/POI and industry and opened up new areas of business. Shuttle consistently implements the latest technologies in proven concepts, making it a strong and reliable partner for distributors, resellers, system integrators as well as OEMs and ODMs.





## MILESTONES

- 2022 — Shuttle introduces industrial-grade panel PCs
- 2021 — Shuttle releases Box-PCs
- 2020 — First Bar-Type Signage Display from Shuttle
- 2019 — Shuttle presents solution for edge computing
- 2018 — Shuttle adds 11.6" model to its All-in-One PC product range
- 2017 — Shuttle launches its first model with HDMI 2.0
- 2016 — Shuttle launches its first model with vPro technology
- 2015 — Shuttle launches its first model with IP54 certification
- 2014 — For the first time Shuttle offers ARM-based PCs
- 2013 — Shuttle celebrates its 30th anniversary since its establishment
- 2012 — Launch of particularly robust and fanless industrial PCs
- 2012 — Introduction of OMNINAS (NAS solutions)
- 2012 — Shuttle adds 18.5" model to its All-in-One PC product range
- 2011 — Shuttle launches the world's fastest Mini PC
- 2010 — Shuttle launches its first 1-litre PC (fanless)
- 2009 — Shuttle starts to use new production facilities in China
- 2009 — Shuttle starts development and production of OEM notebooks
- 2009 — Shuttle launches its first All-in-One PC (fanless)
- 2008 — Shuttle launches Mini PC with integrated touchscreen
- 2006 — Shuttle launches its first 3-litre PC

- 2005 — Shuttle opens branch office in China
- 2005 — Shuttle launches its first Media-Center XPC
- 2005 — First Mini PC in the world with two graphics cards in SLI mode
- 2005 — Tom's Hardware awards Shuttle 'Best SFF PC Maker'
- 2004 — Shuttle introduces XPC complete system solutions
- 2004 — Shuttle establishes Japan branch office
- 2004 — Over one million XPCs shipped
- 2002 — Shuttle introduces the patented 'I.C.E.' heatpipe cooling system
- 2001 — Shuttle launches first Shuttle XPC Mini PC
- 2000 — ISO-14001 certification
- 2000 — Shuttle Inc. becomes a publicly listed company (TAIEX: 2405)
- 1999 — ISO-9001 certification
- 1998 — Shuttle develops the world's first 17×17cm motherboard for OEM market
- 1997 — Shuttle establishes 3,500 m<sup>2</sup> production facilities in Taoyuan, Taiwan
- 1995 — Shuttle recognised as the world's 5<sup>th</sup> largest mainboard maker
- 1995 — ISO 9002 and TÜV certification
- 1990 — Shuttle Computer Handels GmbH established in Germany
- 1988 — Shuttle Computer Group USA established
- 1984 — Shuttle begins manufacturing motherboards in Taoyuan, Taiwan
- 1983 — Shuttle Inc., Taiwan established (formerly Holco)

# SOLUTIONS FOR ANY KIND OF APPLICATIONS

*Our space-saving Mini PCs are real multi-purpose machines. This is just a small selection of possible scenarios that Shuttle holds a solution for.*

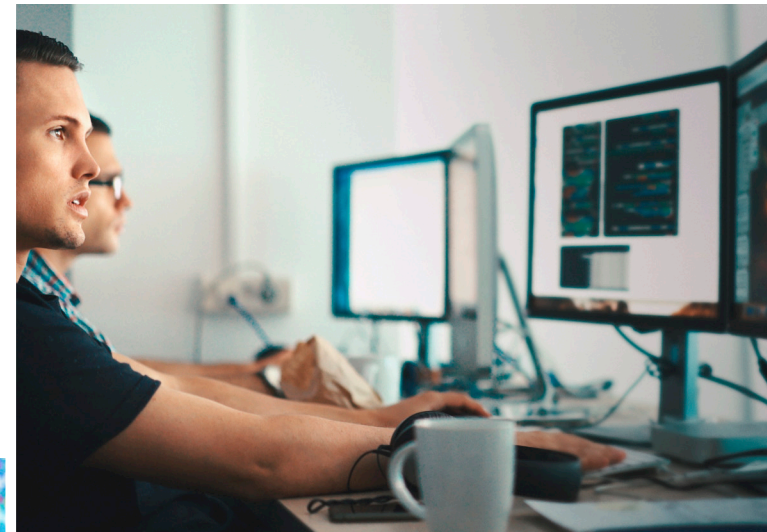


## DIGITAL SIGNAGE

Digital advertising areas, information screens and electronic signs are now an integral part of everyday life. Shuttle supplies the right player for every scenario – and for a wide range of operating systems. These compact machines are all characterised by their robust design. They range from ultra-high-performance models and machines with innumerable ports and connections to low-energy, continuously running fanless devices. High-strength steel and a broad temperature spectrum enable installation even in difficult environments.

## POS

The purchase of a POS system often represents a considerable capital investment. However, with Shuttle's energy-saving All-in-One PCs in your desired configuration, you save money. Thanks to the tilting pedestal and standard installation mount, these machines can be installed almost anywhere. And our new IP54-compliant models are now even more robust. Maximum flexibility in terms of choice of hardware and software enables the creation of a POS solution that exactly meets your requirements.



## SERVER

As a UTM/firewall, file server, web server or mail server and much more – the Mini-PCs from Shuttle cut a fine figure. Two network connections (and even more via expansion cards) as well as Wi-Fi make it possible to set up versatile server services or integrate them into existing complex network structures. Powerful processors guarantee a high packet throughput rate and up to 128 GB of memory enable virtualisation. Shuttle offers various solutions in different chassis formats for your specific server.



## INDUSTRY

Even in tough environments in which supreme reliability particularly matters, people choose products from Shuttle. Are you looking for fanless Mini-PCs for production environments and logistics centres? Perhaps robust technology for inter-linked control cabinets with lots of inputs and outputs? Even versions with superb performance for demanding real-time calculations in the area of image recognition and data capture are available. Allow yourself to be impressed by our variety of products. If you have any questions, we will be happy to advise you.

## OFFICE

It is important to be able to work without disturbances and distracting noises. And a Shuttle slim desktop PC is the ideal companion at work – it stays discreetly in the background, but is also able to spring into action when needed. These tiny PC solutions meet your requirements precisely. You have a wide choice of processors, for example the energy-saving, dual-core Intel Celeron or the extremely powerful Intel Core i7 models. Is just 8 GB plenty for you or do you need 64 GB of memory? And what about the number of drives and network and data connections? Whatever your requirements, we have the right model for you.



## GAMING

Over 60 frames per second, in highest resolution and with maximum depth of detail guarantee thrilling matches on the screen. The XPC cubes from Shuttle offer space for current Intel Core processors, up to 128 GB of RAM and the latest dual-slot graphics cards. In conjunction with a quick NVMe SSD, you can move on to the next map and a higher level without a long wait. One major advantage of Mini-PCs is their space-saving size. This means that a Shuttle XPC cube can swiftly be stored away in a small bag and then easily set up anywhere.

# Robust Panel PCs

15.6" screen, single-touch, resistive

XPC ALL-IN-ONE



## X50V8

## X50V8U3

CASE CHARACTERISTICS

- Plastic case with integrated touchscreen
- Available in black or white
- Movable stand or 75/100 VESA mount
- Connectors on the side and bottom of the case
- One bay for a 2.5" HDD/SSD
- One slot for an NVMe SSD
- Status LEDs
- Camera with 2 megapixel
- Stereo speakers and microphone
- Always on jumper
- External power supply
- Weight 3,500 g
- Fanless cooling
- IP54 protection of front panel
- Ambient temperature range 0–40 °C
- Air humidity range 10–90 %
- 4.2 × 39.1 × 32.7 cm (LWH)

PERFORMANCE FEATURES

<b>Display</b>	1366×768, resistive single-touch screen, 39.6 cm (15.6")	
<b>Processor</b>	Intel Celeron 5205U	Intel Core i3-10110U
<b>Slots</b>	1× M.2-2230, 1× M.2-2280	
<b>Empty slots</b>	1× M.2-2280	
<b>Memory</b>	Up to 2× 32 GB DDR4 SO-DIMM (64 GB)	
<b>Graphics</b>	Intel UHD Graphics for 10 <sup>th</sup> Gen Intel Processors	
<b>Display connectors</b>	1× HDMI 1.4b, 1× VGA	
<b>Network</b>	1× Gigabit Ethernet (Intel i211), Wi-Fi (ac), Bluetooth	
<b>External connections</b>	4× USB 3.2 Gen 1 (5 Gbit) type A, 2× USB 2.0 type A, audio, mic	
<b>Internal connections</b>	1× USB 2.0 Typ A, 1× SATA	
<b>Drives</b>	1× 2.5" SATA, 1× NVMe, SD-Cardreader	
<b>Power supply</b>	65 Watt, 19 Volt DC	
<b>Supported operating voltage</b>	12 Volt ±5 % and 19 Volt ±5 %	
<b>OS support</b>	Windows 10, Windows 11, Linux (64 Bit)	
<b>Further information</b>	<a href="http://go.shuttle.eu/D81Am">go.shuttle.eu/D81Am</a>	<a href="http://go.shuttle.eu/OboQc">go.shuttle.eu/OboQc</a>
<b>Options</b>	1× Parallel + 2× RS-232 or 1× Parallel + 4× RS-232 + 1× DIO, POS-optimised stand	

# 15.6" screen, multi-touch, capacitive

# Robust Panel PCs



XPC ALL-IN-ONE

**P52U**

**P52U3**

**CASE CHARACTERISTICS**

- Plastic case with integrated touchscreen
- Movable stand or 75/100 VESA mount
- Connectors on the side and bottom of the case
- One bay for a 2.5" HDD/SSD
- One slot for an NVMe SSD
- Camera with 2 megapixel
- Stereo speaker and microphone
- Always on jumper
- External power supply
- Weight 3,250 g
- Fanless cooling
- IP54 protection of front panel
- Ambient temperature range 0–40 °C
- Air humidity range 10–90 %
- 4.0 × 39.4 × 27.3 cm (LWH)

**PERFORMANCE FEATURES**

<b>Display</b>	1920×1080, capacitive 10-point multi-touch screen, 39.6 cm (15.6")	
<b>Processor</b>	Intel Celeron 5205U	Intel Core i3-10110U
<b>Slots</b>	1× M.2-2230, 1× M.2-2280	
<b>Empty slots</b>	1× M.2-2230, 1× M.2-2280	
<b>Memory</b>	Up to 2× 32 GB DDR4 SO-DIMM (64 GB)	
<b>Graphics</b>	Intel UHD Graphics for 10 <sup>th</sup> Gen Intel Processors	
<b>Display connectors</b>	1× HDMI 1.4b, 1× VGA	
<b>Network</b>	1× Gigabit Ethernet (Intel i219)	
<b>External connections</b>	2× USB 3.2 Gen 1 (5 Gbit) type A, 2× USB 2.0 type A, 2× RS-232, audio, mic	
<b>Internal connections</b>	1× USB 2.0 type A, 1× I <sup>2</sup> C, 1× SATA	
<b>Drives</b>	1× 2.5" SATA, 1× NVMe, SD card reader	
<b>Power supply</b>	65 Watt, 19 Volt DC	
<b>Supported operating voltage</b>	12 Volt ±5 % and 19 Volt ±5 %	
<b>OS support</b>	Windows 10, Windows 11, Linux (64 Bit)	
<b>Further information</b>	<a href="http://go.shuttle.eu/vnAi5">go.shuttle.eu/vnAi5</a>	<a href="http://go.shuttle.eu/Ew70c">go.shuttle.eu/Ew70c</a>
<b>Options</b>	2× RS-232, Wi-Fi module with external antennas, POS-optimised stand	



# 19.5" screen, multi-touch, capacitive



**P92U**

**P92U3**

**P92U5**

**CASE CHARACTERISTICS**

- Plastic case with integrated touchscreen
- Available in black or white
- Movable stand or 75/100 VESA mount
- Connectors on the side and bottom of the case
- One bay for a 2.5" HDD/SSD
- One slot for an NVMe SSD
- Camera with 2 megapixel
- Stereo speaker and microphone
- Always on jumper
- External power supply
- Weight 4,290 g
- Fanless cooling
- IP54 protection of front panel
- Ambient temperature range 0–40 °C
- Air humidity range 10–90 %
- 4.4 × 48.7 × 32.1 cm (LWH)

**PERFORMANCE FEATURES**

<b>Display</b>	1600×900, capacitive 10-point multi-touch screen, 49.5 cm (19.5")		
<b>Processor</b>	Intel Celeron 5205U	Intel Core i3-10110U	Intel Core i5-10210U
<b>Slots</b>	1× M.2-2230, 1× M.2-2280		
<b>Empty slots</b>	1× M.2-2280		
<b>Memory</b>	Up to 2× 32 GB DDR4 SO-DIMM (64GB)		
<b>Graphics</b>	Intel UHD Graphics for 10 <sup>th</sup> Gen Intel Processors		
<b>Display connectors</b>	1× HDMI 1.4b, 1× VGA		
<b>Network</b>	1× Gigabit Ethernet (Intel i219), Wi-Fi (ac), Bluetooth 4.2		
<b>External connections</b>	4× USB 3.2 Gen 1 (5 Gbit) type A, 2× USB 2.0 type A, audio, mic		
<b>Internal connections</b>	1× USB 2.0 type A, 1× I <sup>2</sup> C, 1× SATA		
<b>Drives</b>	1× 2.5" SATA, 1× NVMe, SD card reader		
<b>Power supply</b>	65 Watt, 19 Volt DC		
<b>Supported operating voltage</b>	12 Volt ±5 % and 19 Volt ±5 %		
<b>OS support</b>	Windows 10, Windows 11, Linux (64 Bit)		
<b>Further information</b>	<a href="http://go.shuttle.eu/mDASL">go.shuttle.eu/mDASL</a>	<a href="http://go.shuttle.eu/fZomA">go.shuttle.eu/fZomA</a>	<a href="http://go.shuttle.eu/Ckyac">go.shuttle.eu/Ckyac</a>

<b>Options</b>	NFC module, 1× Parallel + 2× RS-232 or 1× Parallel + 4× RS-232 + 1× DIO, POS-optimised stand		
----------------	--	--	--



# 11.6" screen, multi-touch, capacitive

# Robust Panel PCs



XPC ALL-IN-ONE

## P25N

CASE CHARACTERISTICS

Plastic case with integrated touchscreen
Cable collector box
Movable stand or 75/100 VESA mount
Connectors on the side and bottom of the case
One bay for a 2.5" HDD/SSD
One slot for an NVMe SSD
Camera with 2 megapixel
Speaker and microphone
External power supply
Weight 1,950 g
Fanless cooling
IP54 protection of front panel
Ambient temperature range 0–40 °C
Air humidity range 10–90 %
5.9 × 29.9 × 20.7 cm (LWH)

PERFORMANCE FEATURES

Display	1366×768, capacitive 10-point multi-touch screen, 29.5 cm (11.6")
Processor	Intel N100
Slots	1× M.2-2230, 1× M.2-2280
Empty slots	1× M.2-2280
Memory	Up to 1× 16 GB DDR5 SO-DIMM (16 GB)
Graphics	Intel UHD Graphics for 13 <sup>th</sup> Gen Intel Processors
Display connectors	1× HDMI 2.0b, 1× VGA
Network	1× 2,5 Gbit Ethernet (Intel i226LM), Wi-Fi 5 (ac), Bluetooth 4.2
External connections	2× USB 3.2 Gen 2 (10 Gbit) type A, 4× USB 3.2 Gen 1 (5 Gbit) type A, 2× RS-232, audio, mic
Internal connections	1× SATA
Drives	1× 2.5" SATA, 1× NVMe
Power supply	65 Watt, 19 Volt DC
Supported operating voltage	12 Volt ±5 % and 19 Volt ±5 %
OS support	Windows 10, Windows 11, Linux (64 Bit)
Further information	go.shuttle.eu/xcTWv
Options	Wi-Fi 6 (ac) & Bluetooth 5.0, POS-optimised stand

# Heavy-duty Panel PCs

15.6" / 21.5" screen, multi-touch, capacitive

PANEL-PC



**P21WL01**

**M21WL01**

**P15WL01**

CASE CHARACTERISTICS

- Heavy aluminium housing with integrated touch screen
- Available in black/blue or white
- Modular housing
- 100×100 VESA mount
- Connectors on the bottom of the case, protected by cover
- One bay for a 2.5" HDD /SSD (except P15WL01)
- One slot for an NVMe SSD
- Camera with 2 megapixel
- External power supply
- Weight 4,600–7,600 g
- Fanless cooling
- IP65 protection of front panel
- Ambient temperature range 0–40 °C
- Air humidity range 20–80 %
- P21: 4.9 × 54.3 × 33.4 cm (LWH)
- P15: 4.9 × 39.4 × 25.6 cm (LWH)

PERFORMANCE FEATURES

<b>Display</b>	1920×1080, capacitive 10-point multi-touch screen, 54.6 cm (21.5")	1920×1080, capacitive 10-point multi-touch screen, 54.6 cm (21.5"), anti-septic coating	1920×1080, kapazitiver 10-Punkt-Multi-Touchscreen, 39.6 cm (15.6")
<b>Processor</b>	Intel Core i7-8665UE, Intel Core i5-8365UE, Intel Core i3-8145UE		Intel Core i5-8365UE
<b>Slots</b>	1× M.2-2230, 1× M.2-2280		
<b>Empty slots</b>	1× M.2-2280		
<b>Memory</b>	Up to 2× 32 GB DDR4 SO-DIMM (64 GB)		
<b>Graphics</b>	Depending on the selected processor		Intel UHD Graphics 620
<b>Display connectors</b>	1× HDMI 1.4b, 1× DVI-I		1× HDMI 1.4b, 1× VGA
<b>Network</b>	2× Gigabit Ethernet (Intel i211, Intel i219LM), Wi-Fi (ac), Bluetooth 4.2		1× Gigabit Ethernet (Intel I219LM), Wi-Fi 5 (ac), Bluetooth 4.2
<b>External connections</b>	4× USB 3.2 Gen 1 (5 Gbit) type A, 3× RS-232, audio, mic		4× USB 3.2 Gen 1 (5 Gbit) typ A, 1× RS-232, audio, mic
<b>Internal connections</b>	1× SATA		
<b>Drives</b>	1× 2.5" SATA, 1× NVMe		1× NVMe
<b>Power supply</b>	90 Watt, 19 Volt DC	90 Watt, 19 Volt DC, complies with IEC 60601-1, EN55011 and FCC Class B	90 Watt, 19 Volt DC
<b>Supported operating voltage</b>	19 Volt ±5 %		9–36 Volt
<b>OS support</b>	Windows 10, Windows 11, Linux (64 Bit)		
<b>Further information</b>	go.shuttle.eu/xZXdB	go.shuttle.eu/fP7Gm	go.shuttle.eu/G7HAv
<b>Options</b>	Module for extended input voltage range (9-36V), POS-optimised stand		POS-optimised stand

# Fanless industrial PC, modular connectors

# Heavy-duty Box PCs



BOX-PC

## BPCWL02

## BPCWL03

## BPCAL02

## BPCAL03

CASE CHARACTERISTICS

- Multi-reinforced aluminium and steel housing
- Individual operating positions, ready for VESA/wall mount
- Connectors on the front and rear
- One slot for an NVMe SSD
- External power supply
- Weight 2850 g
- Fanless cooling
- Ambient temperature range 0 – 40 °C or –20 – 60 °C
- Air humidity range 0–90 %
- 16.9 × 25.5 × 5.7 cm (LWH)

PERFORMANCE FEATURES

	BPCWL02	BPCWL03	BPCAL02	BPCAL03
Processor	Intel Core i7-8665UE, Intel Core i5-8365UE, Intel Core i3-8145UE, Intel Celeron 4305UE		Intel Core i7-1255U, Intel Core i7-1265UE, Intel Core i5-1235U, Intel Core i5-1245UE, Intel Core i3-1215U(E), Intel Celeron 7305E	
Slots	1× M.2-2230, 1× M.2-2280			
Empty slots	1× M.2-2280			
Memory	Up to 2× 32 GB DDR4 SO-DIMM (64 GB)		Up to 2× 32 GB DDR5 SO-DIMM (64 GB)	
Graphics	Depending on the selected processor			
Display connectors	1× HDMI 1.4b (further connections modularly expandable)		1× HDMI 2.0 (further connections modularly expandable)	
Network	2× Gigabit Ethernet (Intel i211, Intel i219LM)		2× 2,5 Gbit Ethernet (Intel i225)	
External connections	4× USB 3.2 Gen 1 (5 Gbit) type A, 1× RS-232, audio, mic		4× USB 3.2 Gen 2 (10 Gbit) type A, 1× RS-232, audio, mic	
Internal connections	—			
Drives	1× NVMe			
Power supply	90 Watt, 19 Volt DC	150 Watt, 19 Volt DC	90 Watt, 19 Volt DC	150 Watt, 19 Volt DC
Supported operating voltage	19 Volt ±5 %			
Supported ambient temperature	0 – 40 °C	–20 – 60 °C	0 – 40 °C	–20 – 60 °C
OS support	Windows 10, Windows 11, Linux (64 Bit)			
Further information	go.shuttle.eu/3gTYi	go.shuttle.eu/Vzu0w	sales@shuttle.eu	
Options	2/3 additional graphics ports, additional COM ports, additional USB 2.0 ports, additional network ports, DIO ports, Wi-Fi/Bluetooth, 4G/LTE function, DIN rail mount, ear mount, module for extended voltage range (9-36V)			

# Compact Embedded PCs

# Suitable for control cabinets, fanless

EDGE



## EN01J4

**CASE CHARACTERISTICS**

Steel chassis for different operating positions
Desktop PC, ready for VESA-/DIN rail and wall mount
Connectors on the side and rear
One slot for an LTE/4G module
Slot for a nano SIM card
Standard Euroblock 2-pin power supply connector
Status-LED
Weight 480 g
Ambient temperature range 0–40 °C
Air humidity range 10–90 %
9.2 × 5.4 × 9 cm (LWH)

**PERFORMANCE FEATURES**

Processor	Pentium J4205
Slots	1× M.2-3032 B
Empty slots	1× M.2-3032 B
Memory	8 GB
Graphics	Intel HD Graphics 505
Display connectors	1× HDMI 1.4b
Network	1× Gigabit Ethernet (Realtek RTL8119I-CG)
External connections	2× USB 3.2 Gen 1 (5 Gbit) type A, 1× Micro USB 2.0
Internal connections	I/O header with two serial ports, 4× GPIO, I <sup>2</sup> C
Drives	64 GB Flash, microSD card reader
Power supply	—
Supported operating voltage	12 Volt ±5 % to 19 Volt ±5 %
OS support	Windows 10, Windows 11, Linux (64 Bit)
Further information	<a href="http://go.shuttle.eu/VJ1UY">go.shuttle.eu/VJ1UY</a>
Options	Wi-Fi 6 (ax) & Bluetooth, HDMI capture card, PoE module, PSE module, LTE antennas, power supply

# 1.3 litre format, fanless



# Robust Mini PCs



XPC SLIM

## DL20NV2

## DL20N6V2

## DL30N

CASE CHARACTERISTICS

- Steel chassis for different operating positions
- Desktop PC, ready for VESA- / wall mount
- Connectors on the front and rear
- One bay for a 2.5" HDD/SSD
- One slot for an NVMe SSD
- Status LEDs
- Remote power on connector
- Always on jumper
- External power supply
- Weight 800 g
- Fanless cooling
- Ambient temperature range 0–40 °C
- Air humidity range 10–90 %
- 19.0 × 16.5 × 4.3 cm (LWH)

PERFORMANCE FEATURES

<b>Processor</b>	Intel Celeron N4505	Intel Pentium Silver N6005	Intel N100
<b>Slots</b>	1× M.2-2230, 1× M.2-2280		
<b>Empty slots</b>	1× M.2-2280		1× M.2-2230, 1× M.2-2280
<b>Memory</b>	Up to 2× 8 GB DDR4 SO-DIMM (16 GB)		Up to 1× 16 GB DDR5 SO-DIMM (16 GB)
<b>Graphics</b>	Intel UHD Graphics		
<b>Display connectors</b>	1× HDMI 2.0b, 1× DisplayPort 1.4a, 1× VGA		
<b>Network</b>	1× 2,5 Gigabit Ethernet (Intel i225)		2× 2,5 Gbit Ethernet (Intel i226-LM)
<b>External connections</b>	2× USB 3.2 Gen 2 (10 Gbit) type A, 2× USB 3.2 Gen 1 (5 Gbit) type A, 2× USB 2.0 type A, 2× RS-232, audio, mic,		8× USB 3.2 Gen 1 (5 Gbit) type A, 2× RS-232, audio, mic
<b>Internal connections</b>	1× SATA		
<b>Drives</b>	1× 2.5" SATA, 1× NVMe, SD card reader		1× 2.5" SATA, 1× NVMe
<b>Power supply</b>	40 Watt, 19 Volt DC		65 Watt, 19 Volt DC
<b>Supported operating voltage</b>	12 Volt ±5 % and 19 Volt ±5 %		
<b>OS support</b>	Windows 10, Windows 11, Linux (64 Bit)		
<b>Further information</b>	<a href="http://go.shuttle.eu/4LwrC">go.shuttle.eu/4LwrC</a>	<a href="http://go.shuttle.eu/w97mQ">go.shuttle.eu/w97mQ</a>	<a href="http://go.shuttle.eu/DL30N">go.shuttle.eu/DL30N</a>
<b>Options</b>	Wi-Fi 6 (ax) & Bluetooth, LTE kit, DIN rail mount, vertical stand, 19" 2U rack mount kit, cable for external power button		

# Robust Mini PCs

1.3 litre format, fanless



## DS20UV2

## DS20U3V2

**CASE CHARACTERISTICS**

- Steel chassis for different operating positions
- Stand for vertical operation and VESA-/wall mount
- Connectors on the front and rear
- One bay for a 2.5" HDD/SSD
- One slot for an NVMe SSD
- Status LEDs
- Remote power on connector
- Always on jumper
- External power supply
- Weight 1,430–1,500 g
- Fanless cooling
- Ambient temperature range 0–40 °C
- Air humidity range 10–90 %
- 20.0 × 16.5 × 3.95 cm (LWH)

**PERFORMANCE FEATURES**

	DS20UV2	DS20U3V2
<b>Processor</b>	Intel Celeron 5205U	Intel Core i3-10110U
<b>Slots</b>	1× M.2-2230, 1× M.2-2280	
<b>Empty slots</b>	1× M.2-2230, 1× M.2-2280	
<b>Memory</b>	Up to 2× 32 GB DDR4 SO-DIMM (64 GB)	
<b>Graphics</b>	Intel UHD Graphics for 10 <sup>th</sup> Gen Intel Processors	
<b>Display connectors</b>	1× HDMI 2.0b, 1× DisplayPort 1.2, 1× VGA	
<b>Network</b>	1× 2,5 Gbit Ethernet (Intel i225), 1× Gigabit Ethernet (Intel i219LM)	
<b>External connections</b>	4× USB 3.2 Gen 1 (5 Gbit) type A, 4× USB 2.0 type A, 1× RS-232, audio, mic, Wi-Fi antennas	4× USB 3.2 Gen 2 (10 Gbit) type A, 4× USB 2.0 type A, 1× RS-232, audio, mic, Wi-Fi antennas
<b>Internal connections</b>	1× SATA	
<b>Drives</b>	1× 2.5" SATA, 1× NVMe, SD card reader	
<b>Power supply</b>	65 Watt, 19 Volt DC	
<b>Supported operating voltage</b>	12 Volt ±5 % and 19 Volt ±5 %	
<b>OS support</b>	Windows 10, Windows 11, Linux (64 Bit)	
<b>Further information</b>	<a href="http://go.shuttle.eu/8fclR">go.shuttle.eu/8fclR</a>	<a href="http://go.shuttle.eu/xQFBb">go.shuttle.eu/xQFBb</a>
<b>Options</b>	Wi-Fi 5 (ac) & Bluetooth module, Wi-Fi 6 (ax) & Bluetooth, LTE kit, DIN rail mount, 19" 2U rack mount kit, cable for external power button	

# 1.3 litre format, fanless

# Robust Mini PCs



XPC SLIM

## DS50U

## DS50U3

## DS50U5

## DS50U7

CASE CHARACTERISTICS

- Steel chassis for different operating positions
- Stand for vertical operation and VESA-/wall mount
- Connectors on the front and rear
- One bay for a 2.5" HDD/SSD
- Two slots for M.2-SSDs (PCIe/SATA)
- Status LEDs
- Remote power on connector
- Always on jumper
- External power supply
- Weight 1,600 g
- Fanless cooling
- Ambient temperature range 0–40 °C
- Air humidity range 10–90 %
- 20.0 × 16.5 × 3.95 cm (LWH)

PERFORMANCE FEATURES

	DS50U	DS50U3	DS50U5	DS50U7
<b>Processor</b>	Intel Celeron 7305	Intel Core i3-1315U	Intel Core i5-1335U	Intel Core i7-1355U
<b>Slots</b>		1× M.2-2230, 2× M.2-2280		
<b>Empty slots</b>		1× M.2-2230, 2× M.2-2280		
<b>Memory</b>		Up to 2× 32 GB DDR5 S0-DIMM (64 GB)		
<b>Graphics</b>		Intel UHD Graphics for 13 <sup>th</sup> Gen Intel Processors		
<b>Display connectors</b>		1× HDMI 2.0b, 1× DisplayPort 1.4, 1× VGA		
<b>Network</b>		1× 2,5 Gbit Ethernet (Intel i226), 1× Gigabit Ethernet (Intel i219)		
<b>External connections</b>		2× USB 3.2 Gen 2 (10 Gbit) type A, 4× USB 3.2 Gen 1 (5 Gbit) type A, 2× USB 2.0 type A, 1× RS-232, audio, mic, Wi-Fi antennas		
<b>Internal connections</b>		1× SATA		
<b>Drives</b>		1× 2.5" SATA, 1× M.2- NVMe, 1× M.2-SATA		
<b>Power supply</b>		90 Watt, 19 Volt DC		
<b>Supported operating voltage</b>		12 Volt ±5 % and 19 Volt ±5 %		
<b>OS support</b>		Windows 10, Windows 11, Linux (64 Bit)		
<b>Further information</b>	<a href="http://go.shuttle.eu/vDMxr">go.shuttle.eu/vDMxr</a>	<a href="http://go.shuttle.eu/58Jlh">go.shuttle.eu/58Jlh</a>	<a href="http://go.shuttle.eu/u92wp">go.shuttle.eu/u92wp</a>	<a href="http://go.shuttle.eu/HWNRn">go.shuttle.eu/HWNRn</a>
<b>Options</b>	Wi-Fi 6 (ax) & Bluetooth 5.0, 5G/LTE kit, DIN rail mount, 19" 2U rack mount kit, cable for external power button, cable for second COM port			

# 1.3 litre format, multi-screen support



## DH02U

## DH32U

## DH32U5

### CASE CHARACTERISTICS

Steel chassis for different operating positions
Desktop PC, ready for VESA-/ wall mount
Connectors on the front and rear
One bay for a 2.5" HDD/SSD
One slot for an NVMe SSD
Status LEDs
Remote power on connector
Always on jumper
External power supply
Weight 1,030 g
Heatpipe cooling
Two linear controlled fans (60 and 50 mm)
Ambient temperature range 0–50 °C
Air humidity range 10–90 %
19.0 × 16.5 × 4.3 cm (LWH)

### PERFORMANCE FEATURES

	DH02U	DH32U	DH32U5
<b>Processor</b>	Intel Celeron 3865U	Intel Pentium Gold 7505	Intel Core i5-1135G7
<b>Slots</b>		1× M.2-2230, 1× M.2-2280	
<b>Empty slots</b>		1× M.2-2230, 1× M.2-2280	
<b>Memory</b>	Up to 2× 16 GB DDR4 SO-DIMM (32 GB)	Up to 2× 32 GB DDR4 SO-DIMM (64 GB)	
<b>Graphics</b>	NVIDIA GeForce GTX 1050, 4 GB	Intel UHD Graphics for 11 <sup>th</sup> Gen Intel Processors	
<b>Display connectors</b>		4× HDMI 2.0b	
<b>Network</b>	1× Gigabit Ethernet (Intel i211)	2× Gigabit Ethernet (Intel i211)	
<b>External connections</b>	4× USB 3.2 Gen 1 (5 Gbit) type A, 2× USB 2.0 type A, 1× RS-232, audio, mic	4× USB 3.2 Gen 1 (10 Gbit) type A, 4× USB 3.2 Gen 1 (5 Gbit) type A, 2× RS-232, audio, mic	
<b>Internal connections</b>		Audio I/O, VGA, 1× SATA	
<b>Drives</b>	1× 2.5" SATA, 1× NVMe	1× 2.5" SATA, 1× NVMe, SD card reader	
<b>Power supply</b>	120 Watt, 19 Volt DC	90 Watt, 19 Volt DC	
<b>Supported operating voltage</b>		19 Volt ±5 %	
<b>OS support</b>	Windows 10, Linux (64 Bit)	Windows 10, Windows 11, Linux (64 Bit)	
<b>Further information</b>	go.shuttle.eu/Kwfqe	go.shuttle.eu/bThZN	go.shuttle.eu/AKms3
<b>Options</b>	Wi-Fi 6 (ax) & Bluetooth, DIN rail mount, vertical stand, 19" 2U rack mount kit, cable for external power button		



# 1.3 litre format, heatpipe cooling

# Robust Mini PCs



XPC SLIM

**DH670V2**

**DH610**

**DH610S**

**CASE CHARACTERISTICS**

- Steel chassis for different operating positions
- Desktop PC, ready for VESA-/ wall mount
- Connectors on the front and rear
- One bay for a 2.5" HDD/SSD
- One slot for an NVMe SSD
- Status LEDs
- Remote power on connector
- Always on jumper
- External power supply
- Weight 1,300 g
- Heatpipe cooling
- Two linear controlled fans (60 mm)
- Ambient temperature range 0–50 °C
- Air humidity range 10–90 %
- 19.0 × 16.5 × 4.3 cm (LWH)

**PERFORMANCE FEATURES**

<b>Processor socket</b>	LGA 1700, TDP max. 65 Watt		
<b>Processor compatibility</b>	Intel Core i3/i5/i7/i9, Pentium, Celeron (12 <sup>th</sup> /13 <sup>th</sup> /14 <sup>th</sup> Generation, 'Alder Lake'/'Raptor Lake'/'Raptor Lake Refresh')		
<b>Slots</b>	1× M.2-2230, 1× M.2-2280		
<b>Empty slots</b>	1× M.2-2230, 1× M.2-2280		
<b>Memory</b>	Up to 2× 32 GB DDR4 S0-DIMM (64 GB)		
<b>Graphics</b>	Depending on the selected processor		
<b>Display connectors</b>	2× HDMI 2.0b, 2× DisplayPort 1.4	1× HDMI 2.0b, 2× DisplayPort 1.4	1× HDMI 2.0b, 1× DisplayPort 1.4
<b>Network</b>	2× 2,5 Gbit (Intel i225)	1× 2,5 Gbit Ethernet (Intel i225), 1× Gigabit Ethernet (Intel i219V/LM)	1× Gigabit Ethernet (Intel i219V/LM)
<b>External connections</b>	4× USB 3.2 Gen 2 (10 Gbit) type A, 3× USB 3.2 Gen 1 (5 Gbit) type A, 1× USB 3.2 Gen 1 (5 Gbit) type C, 2× RS-232, audio, mic	3× USB 3.2 Gen 1 (5 Gbit) type A, 1× USB 3.2 Gen 1 (5 Gbit) type C, 4× USB 2.0 type A, audio, mic	
<b>Internal connections</b>	VGA, 1× SATA		
<b>Drives</b>	1× 2.5" SATA, 1× NVMe		
<b>Power supply</b>	120 Watt, 19 Volt DC		
<b>Supported operating voltage</b>	19 Volt ±5 %	12 Volt ±5 % and 19 Volt ±5 %	19 Volt ±5 %
<b>OS support</b>	Windows 10, Windows 11, Linux (64 Bit)		
<b>Further information</b>	go.shuttle.eu/lwPhc	go.shuttle.eu/15lai	go.shuttle.eu/gWINq
<b>Options</b>	VGA connector, Wi-Fi 6 (ax) & Bluetooth, LTE kit, DIN rail mount, vertical stand, 19" 2U rack mount kit, cable for external power button		VGA connector, Wi-Fi 6 (ax) & Bluetooth, LTE kit, VESA mount, DIN rail mount, vertical stand, 19" 2U rack mount kit, cable for external power button

# Robust Mini PCs

# 3 litre format, heatpipe cooling

XPC SLIM



## XH310RV

## XH510G

CASE CHARACTERISTICS

- Steel chassis for different operating positions
- Desktop PC, ready for VESA-/ wall mount
- Connectors on the front and rear
- One to four 2.5" drive bays (SSD/HDD)
- One slot for an NVMe SSD
- One bay for an optical slimline drive (except XH510G)
- Status LEDs
- Remote power on connector (depending on model)
- Always on jumper
- External power supply
- Weight 2,200 g
- Heatpipe cooling
- Two linear controlled fans (60 mm)
- Ambient temperature range 0–50 °C
- Air humidity range 10–90 %
- 23.8 × 20.0 × 7.25 cm (LWH)

PERFORMANCE FEATURES

Processor socket	LGA 1151v2, TDP max. 65 Watt	LGA 1200, TDP max. 65 Watt
Processor compatibility	Intel Core i3/i5/i7/i9, Pentium, Celeron (8 <sup>th</sup> /9 <sup>th</sup> Generation, 'Coffee Lake')	Intel Core i3/i5/i7/i9, Pentium, Celeron (10 <sup>th</sup> /11 <sup>th</sup> Generation, 'Comet Lake' & 'Rocket Lake')
Slots	1× M.2-2230, 1× M.2-2280	1× M.2-2230, 2× M.2-2280, 1× PCI-Express-×16-4.0
Empty slots	1× M.2-2230, 1× M.2-2280	1× M.2-2230, 2× M.2-2280, 1× PCI-Express-×16-4.0
Memory	Up to 2× 16 GB DDR4 SO-DIMM (32 GB)	Up to 2× 32 GB DDR4 SO-DIMM (64 GB)
Graphics	Depending on the selected processor and PCIe graphics card	
Display connectors	1× HDMI 2.0a, 1× DisplayPort 1.2, 1× VGA	1× HDMI 2.0a, 1× DisplayPort 1.4
Network	2× Gigabit Ethernet (Intel i211)	1× Gigabit Ethernet (Intel i219LM)
External connections	4× USB 3.2 Gen 1 (5 Gbit) type A, 4× USB 2.0 type A, 2× RS-232, audio, mic	4× USB 3.2 Gen 1 (5 Gbit) type A, 4× USB 2.0 type A, audio, mic
Internal connections	1× USB 2.0, eDP, 3× SATA, 2× RS-232, LPC	VGA, 1× SATA
Drives	2× 2.5" SATA, 1× Slimline SATA, 1× NVMe	1× 2.5" SATA, 1× NVMe, 1× M.2-SATA
Power supply	90 Watt, 19 Volt DC	180 Watt, 19,5 Volt DC
Supported operating voltage	12 Volt ±5 % and 19 Volt ±5 %	19 Volt ±5 %
OS support	Windows 10, Windows 11, Linux (64 Bit)	
Further information	go.shuttle.eu/82f0s	go.shuttle.eu/A0WVH
Options	Wi-Fi 6 (ax) & Bluetooth, vertical stand, VESA mount, 3× RS-232, 3.5" HDD rack, cable for external power button	VGA connector, Wi-Fi 6 (ax) & Bluetooth, COM port, cable for external power button

## 3 litre format, heatpipe cooling

## Robust Mini PCs



**XH610**



**XH610V**

XPC SLIM

PERFORMANCE FEATURES

Processor socket	LGA 1700, TDP max. 65 Watt	
Processor compatibility	Intel Core i3/i5/i7/i9, Pentium, Celeron (12 <sup>th</sup> /13 <sup>th</sup> /14 <sup>th</sup> Generation, 'Alder Lake'/'Raptor Lake'/'Raptor Lake Refresh')	
Slots	1× M.2-2230, 1× M.2-2280	
Empty slots	1× M.2-2230, 1× M.2-2280	
Memory	Up to 2× 32 GB DDR4 SO-DIMM (64 GB)	
Graphics	Depending on the selected processor and PCIe graphics card	
Display connectors	1× HDMI 2.0a, 1× DisplayPort 1.4, 1× VGA	
Network	1× 2,5 Gbit Ethernet (Intel I225), 1× Gigabit Ethernet (Intel I219LM)	
External connections	3× USB 3.2 Gen 1 (5 Gbit) Typ A, 1× USB 3.2 Gen 1 (5 Gbit) Typ C, 4× USB 2.0, 2× RS-232, Audio, Mic	
Internal connections	3× SATA (1× Slimline), 3× RS-232	
Drives	2× 2.5" SATA, 1× Slimline SATA, 1× NVMe	
Power supply	120 Watt, 19 Volt DC	
Supported operating voltage	12 Volt ±5 % and 19 Volt ±5 %	
OS support	Windows 10, Windows 11, Linux (64 Bit)	
Further information	<a href="http://go.shuttle.eu/vXrlw">go.shuttle.eu/vXrlw</a>	<a href="http://go.shuttle.eu/lq9X8">go.shuttle.eu/lq9X8</a>
Options	Wi-Fi 6 (ax) & Bluetooth, 3× COM port, vertical stand, VESA mount, LTE kit, 3.5" HDD rack, cable for external power button	Wi-Fi 6 (ax) & Bluetooth, vertical stand, VESA mount, LTE kit, 3.5" HDD rack, cable for external power button

# Robust Mini PCs

# Supports 2× PCIe

XPC SLIM



## XH510G2

CASE CHARACTERISTICS

- Steel chassis for different operating positions
- Desktop PC, ready for VESA-/ wall mount
- Connectors on the front and rear
- One bay for a 2.5" HDD/SSD
- One slot for an NVMe SSD
- Status LEDs
- Remote power on connector
- Always on jumper
- External power supply
- Weight 2,980 g
- Heatpipe cooling
- Two linear controlled fans (60 mm)
- Ambient temperature range 0–50 °C
- Air humidity range 10–90 %
- 25.0 × 20.0 × 9.5 cm (LWH)

PERFORMANCE FEATURES

Processor socket	LGA 1200, TDP max. 65 Watt
Processor compatibility	Intel Core i3/i5/i7/i9, Pentium, Celeron (10 <sup>th</sup> /11 <sup>th</sup> Generation, 'Comet Lake' & 'Rocket Lake')
Slots	1× M.2-2230, 2× M.2-2280, 1× PCI-Express-×16-4.0, 1× PCI-Express-×1-3.0
Empty slots	1× M.2-2230, 2× M.2-2280, 1× PCI-Express-×16-4.0, 1× PCI-Express-×1-3.0
Memory	Up to 2× 32 GB DDR4 SO-DIMM (64 GB)
Graphics	Depending on the selected processor and PCIe graphics card
Display connectors	1× HDMI 2.0a, 1× DisplayPort 1.4
Network	1× Gigabit Ethernet (Intel i219LM)
External connections	4× USB 3.2 Gen 1 (5 Gbit) type A, 4× USB 2.0 type A, audio, mic
Internal connections	VGA, 1× SATA
Drives	1× 2.5" SATA, 1× NVMe, 1× M.2-SATA
Power supply	180 Watt, 19,5 Volt DC
Supported operating voltage	19 Volt ±5 %
OS support	Windows 10, Windows 11, Linux (64 Bit)
Further information	<a href="http://go.shuttle.eu/lhdRf">go.shuttle.eu/lhdRf</a>
Options	VGA connector, Wi-Fi 6 (ax) & Bluetooth, LTE kit, COM port, cable for external power button, extension for second power supply

# Compact mini server, for 4 HDDs

# Cube format



**SW580R8**

**SH570R8**

XPC CUBE

CASE CHARACTERISTICS

Aluminium case
Desktop PC
Connectors on the front and rear
4 bays for 3.5" HDD/SSD (alternatively 2.5" HDD/SSD with optional drive holder)
One to two slots for NVMe SSDs
Status LEDs
Remote power on connector (depending on model)
Internal power supply
Weight 3,500 g
Heatpipe cooling
Two linear controlled fans (92 mm and 80 mm)
Ambient temperature range 0–40 °C
Air humidity range 10–90 %
33.2 × 21.5 × 19.0 cm (LWH)

PERFORMANCE FEATURES

<b>Processor socket</b>	LGA 1200, TDP max. 125 Watt	
<b>Processor compatibility</b>	Intel Core i3/i5/i7/i9, Xeon, Pentium, Celeron (10 <sup>th</sup> /11 <sup>th</sup> Generation, 'Comet Lake' & 'Rocket Lake')	Intel Core i3/i5/i7/i9, Pentium, Celeron (10 <sup>th</sup> /11 <sup>th</sup> Generation, 'Comet Lake' & 'Rocket Lake')
<b>Slots</b>	1× M.2-2230, 2× M.2-2280, 1× PCIe-×16-3.0, 1× PCIe-×4-4.0	1× M.2-2230, 1× M.2-2280, 1× PCIe-×16-3.0, 1× PCIe-×4-4.0
<b>Empty slots</b>	1× M.2-2230, 2× M.2-2280, 1× PCIe-×16-3.0, 1× PCIe-×4-4.0	1× M.2-2230, 1× M.2-2280, 1× PCIe-×16-3.0, 1× PCIe-×4-4.0
<b>Memory</b>	Up to 4× 32 GB DDR4 DIMM (128 GB), ECC-compatible with Xeon processor	Up to 4× 32 GB DDR4 DIMM (128 GB)
<b>Graphics</b>	Depending on the selected processor and PCIe graphics card	
<b>Display connectors</b>	1× HDMI 2.0b, 2× DisplayPort 1.4	
<b>Network</b>	2× 2,5 Gbit Ethernet (Realtek 8125b), 2× Gigabit Ethernet (Intel i211/i219LM)	2× Gigabit Ethernet (Intel i211, Intel i219LM)
<b>External connections</b>	4× USB 3.2 Gen 2 (10 Gbit) type A, 1× USB 3.2 Gen 1 (5 Gbit) type C, 3× USB 3.2 Gen 1 (5 Gbit) type A, 4× USB 2.0 type A, audio, mic	
<b>Internal connections</b>	1× RS-232, 2× USB 2.0, 4× SATA, fan connector	
<b>Drives</b>	4× 2.5"/3.5" SATA, 1× NVMe, 1× M.2-SATA	4× 2.5"/3.5" SATA, 1× NVMe
<b>Power supply</b>	500 Watt	
<b>Supported operating voltage</b>	100 Volt to 240 Volt	
<b>OS support</b>	Windows 10, Windows 11, Linux (64 Bit)	
<b>Further information</b>	<a href="http://go.shuttle.eu/l8ZUW">go.shuttle.eu/l8ZUW</a>	<a href="http://go.shuttle.eu/3Fvr4">go.shuttle.eu/3Fvr4</a>
<b>Options</b>	850 Watt power supply, RS-232, Wi-Fi 6 (ax) & Bluetooth, 2.5" HDD/SSD expansion frame, cable for external power button	

# Cube format

# Compact workstations, heatpipe cooling



XPC CUBE



## SH510R4

## SH610R4

**CASE CHARACTERISTICS**

Aluminium case
Desktop PC
Connectors on the front and rear
2 Bays for 3.5" HDD/SSD (4 Bays for 2.5" HDD/SSD with optional drive holder)
One slot for an NVMe SSD
One bay for optical 5.25" drive
Status LEDs
Remote power on connector (depending on model)
Internal power supply
Weight 3,500 g
Heatpipe cooling
One linear controlled fan (92 mm)
Ambient temperature range 0–40 °C
Air humidity range 10–90 %
33.2 × 21.5 × 19.0 cm (LWH)

**PERFORMANCE FEATURES**

<b>Processor socket</b>	LGA 1200, TDP max. 125 Watt	LGA 1700, TDP max. 125 Watt
<b>Processor compatibility</b>	Intel Core i3/i5/i7/i9, Pentium, Celeron (10 <sup>th</sup> /11 <sup>th</sup> Generation, 'Comet Lake' & 'Rocket Lake')	
<b>Slots</b>	1× M.2-2230, 1× M.2-2280, 1× PCIe-×16-4.0, 1× PCIe-×1-3.0	
<b>Empty slots</b>	1× M.2-2230, 1× M.2-2280, 1× PCIe-×16-4.0, 1× PCIe-×1-3.0	
<b>Memory</b>	Up to 2× 32 GB DDR4 DIMM (64 GB)	
<b>Graphics</b>	Depending on the selected processor and PCIe graphics card	
<b>Display connectors</b>	1× HDMI 2.0b, 1× DisplayPort 1.4, 1× VGA	1× HDMI 2.0b, 2× DisplayPort 1.4, 1× VGA
<b>Network</b>	1× Gigabit Ethernet (Intel i219LM)	2× Gigabit Ethernet (Intel i210AT, Intel i219LM Phy)
<b>External connections</b>	4× USB 3.2 Gen 1 (5 Gbit) type A, 4× USB 2.0 type A, audio, mic, Remote-Power-On	
<b>Internal connections</b>	1× RS-232, 1× USB 2.0, 4× SATA, fan connector	
<b>Drives</b>	3× 2.5" SATA/2× 3.5" SATA/1× 5.25" SATA, 1× NVMe	
<b>Power supply</b>	300 Watt	
<b>Supported operating voltage</b>	100 Volt to 240 Volt	
<b>OS support</b>	Windows 10, Windows 11, Linux (64 Bit)	
<b>Further information</b>	<a href="http://go.shuttle.eu/Zl8of">go.shuttle.eu/Zl8of</a>	<a href="http://go.shuttle.eu/A3Ub1">go.shuttle.eu/A3Ub1</a>
<b>Options</b>	PSU 500 Watt, PSU 850 Watt, RS-232, Wi-Fi 6 (ax) & Bluetooth, 2.5" HDD/SSD expansion frame, cable for external power button	

# Compact workstations, heatpipe cooling

# Cube format



**SH570R6**



**SH570R6 Plus**

XPC CUBE

PERFORMANCE FEATURES

Processor socket	LGA 1200, TDP max. 125 Watt	
Processor compatibility	Intel Core i3/i5/i7/i9, Pentium, Celeron (10 <sup>th</sup> /11 <sup>th</sup> Generation, 'Comet Lake' & 'Rocket Lake')	
Slots	1× M.2-2230, 1× M.2-2280, 1× PCIe-×16-3.0, 1× PCIe-×4-4.0	
Empty slots	1× M.2-2230, 1× M.2-2280, 1× PCIe-×16-3.0, 1× PCIe-×4-4.0	
Memory	Up to 4× 32 GB DDR4 DIMM (128 GB)	
Graphics	Depending on the selected processor and PCIe graphics card	
Display connectors	1× HDMI 2.0b, 2× DisplayPort 1.4	
Network	2× Gigabit Ethernet (Intel i211, Intel i219LM)	
External connections	4× USB 3.2 Gen 2 (10 Gbit) type A, 4× USB 3.2 Gen 1 (5 Gbit) type C, 3× USB 3.2 Gen 1 (5 Gbit) type A, 4× USB 2.0 type A, audio, mic	
Internal connections	RS-232, 2× USB 2.0, 4× SATA, fan connector	
Drives	4× 2.5" SATA/2× 3.5" SATA/1× 5.25" SATA, 1× NVMe	
Power supply	300 Watt	500 Watt
Supported operating voltage	100 Volt to 240 Volt	
OS support	Windows 10, Windows 11, Linux (64 Bit)	
Further information	<a href="http://go.shuttle.eu/C3QHi">go.shuttle.eu/C3QHi</a>	<a href="http://go.shuttle.eu/cyF6p">go.shuttle.eu/cyF6p</a>
Options	PSU 500 Watt, PSU 850 Watt, RS-232, Wi-Fi 6 (ax) & Bluetooth, 2.5" HDD/SSD expansion frame, cable for external power button	PSU 850 Watt, RS-232, Wi-Fi 6 (ax) & Bluetooth, 2.5" HDD/SSD expansion frame, cable for external power button

# Compact Desktop PCs

# Space-saving format

XPC NANO



**NC10U5**



**NC10U7**

**CASE CHARACTERISTICS**

Plastic case for different operating positions
Stand for vertical operation and VESA-/wall mount
Connectors on the front, side and rear
One bay for a 2.5" HDD/SSD
One slot for an NVMe SSD
Status LEDs
Always on jumper
External power supply
Weight 400 g
Heatpipe cooling
One linear controlled fan (50 mm)
Ambient temperature range 0-40 °C
Air humidity range 10-90 %
14.2 × 14.2 × 4.2 cm (LWH)

**PERFORMANCE FEATURES**

	Intel Core i5-8265U	Intel Core i7-8565U
<b>Processor</b>	Intel Core i5-8265U	Intel Core i7-8565U
<b>Slots</b>	1× M.2-2230, 1× M.2-2280	
<b>Empty slots</b>	1× M.2-2280	
<b>Memory</b>	Up to 2× 16 GB DDR4 SO-DIMM (32 GB)	
<b>Graphics</b>	Intel UHD Graphics 620	
<b>Display connectors</b>	1× HDMI 2.0a, 1× DisplayPort 1.2	
<b>Network</b>	1× Gigabit Ethernet (Intel i211), Wi-Fi (n)	
<b>External connections</b>	1× USB 3.2 Gen 1 (5 Gbit) type A, 1× USB 3.2 Gen 1 (5 Gbit) type C, 2× USB 2.0 type A, 1× RS-232, audio/mic combo	
<b>Internal connections</b>	1× SATA	
<b>Drives</b>	1× 2.5" SATA, 1× NVMe, SD card reader	
<b>Power supply</b>	65 Watt, 19 Volt DC	
<b>Supported operating voltage</b>	19 Volt ±5 %	
<b>OS support</b>	Windows 10, Windows 11, Linux (64 Bit)	
<b>Further information</b>	<a href="http://go.shuttle.eu/d2jpc">go.shuttle.eu/d2jpc</a>	<a href="http://go.shuttle.eu/k4b5l">go.shuttle.eu/k4b5l</a>
<b>Options</b>	Wi-Fi 6 (ax) & Bluetooth, DIN rail mount	



# Space-saving format

# Compact Desktop PCs

XPC NANO



**NC40U**

**NC40U3**

**NC40U5**

**NC40U7**

PERFORMANCE FEATURES

<b>Processor</b>	Intel Celeron 7305	Intel Core i3-1215U	Intel Core i5-1235U	Intel Core i7-1255U
<b>Slots</b>	1× M.2-2230, 2× M.2-2280			
<b>Empty slots</b>	1× M.2-2230, 2× M.2-2280			
<b>Memory</b>	Up to 2× 32 GB DDR4 SO-DIMM (64 GB)			
<b>Graphics</b>	Intel UHD Graphics for 12 <sup>th</sup> Gen Intel Processors		Intel Iris Xe	
<b>Display connectors</b>	1× HDMI 2.0b, 1× DisplayPort 1.4a, 1× USB type C			
<b>Network</b>	1× Gigabit Ethernet (Intel I211)			
<b>External connections</b>	2× USB 3.2 Gen 2 (10 Gbit) type A, 4× USB 3.2 Gen 1 (5 Gbit) type A, 1× USB 3.2 Gen 1 (5 Gbit) type C, audio, mic			
<b>Internal connections</b>	1× SATA			
<b>Drives</b>	1× 2.5" SATA, 1× NVMe			
<b>Power supply</b>	65 Watt, 19 Volt DC			
<b>Supported operating voltage</b>	19 Volt ±5 %			
<b>OS support</b>	Windows 10, Windows 11, Linux (64 Bit)			
<b>Further information</b>	<a href="http://go.shuttle.eu/2vMbd">go.shuttle.eu/2vMbd</a>	<a href="http://go.shuttle.eu/lbP2J">go.shuttle.eu/lbP2J</a>	<a href="http://go.shuttle.eu/gN7IG">go.shuttle.eu/gN7IG</a>	<a href="http://go.shuttle.eu/OPu78">go.shuttle.eu/OPu78</a>
<b>Options</b>	Wi-Fi 6 (ax) & Bluetooth			

# Android-based, fanless

XPC NANO



# Compact Embedded PCs



**NS02AV2**

**NS02EV2**

**NS03A**

**NS03E**

CASE CHARACTERISTICS

- Plastic case for different operating positions
- Desktop PC, ready for VESA-/wall mount
- Connectors on the front and rear
- Status LEDs
- Remote power on connector
- External power supply or PoE power source
- Weight 270 g
- Fanless cooling
- Ambient temperature range 0–40 °C
- Air humidity range 10–90 %
- 14.1 × 14.1 × 2.9 cm (LWH)

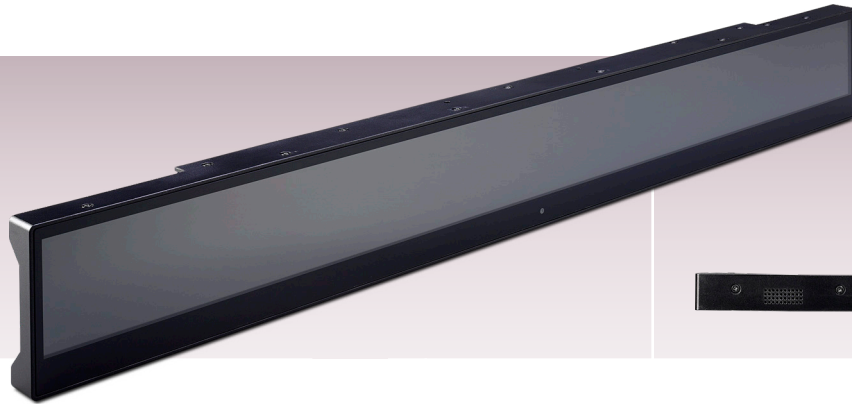
PERFORMANCE FEATURES

<b>Processor</b>	Rockchip RK3368 Octa-Core Cortex-A53 (ARM)		Rockchip RK3568 Quad-Core Cortex-A55 (ARM)	
<b>Slots</b>	—		1× M.2-2280	
<b>Empty slots</b>	—		1× M.2-2280	
<b>Memory</b>	2 GB DDR3L		2 GB DDR4	
<b>Graphics</b>	PowerVR SGX6110			
<b>Display connectors</b>	1× HDMI 2.0		1× HDMI 2.0, 1× HDMI 1.4	
<b>Network</b>	1× Gigabit Ethernet (Realtek RTL8211F-CG), Wi-Fi (n), Bluetooth 5.0		1× Gigabit Ethernet (Realtek RTL8211E-VB-CG), Wi-Fi (n), Bluetooth 5.0	
<b>External connections</b>	4× USB 2.0 type A, audio		2× USB 3.2 Gen 1 (5 Gbit) type A, 2× USB 2.0 type A, audio	
<b>Internal connections</b>	—			
<b>Drives</b>	16 GB Flash, SD card reader		32 GB Flash, 1× NVMe, SD card reader	
<b>Power supply</b>	24 Watt, 12 Volt DC	PoE (IEEE 802.3at)	36 Watt, 12 Volt DC	PoE (IEEE 802.3at)
<b>Supported Operating Voltage</b>	12 Volt	36–57 Volt	12 Volt	36–57 Volt
<b>Operating system</b>	Android 8.1 ('Oreo')		Android 11	
<b>Further information</b>	go.shuttle.eu/eUZPg	go.shuttle.eu/KRaDw	go.shuttle.eu/H7tqv	go.shuttle.eu/7Q6ra
<b>Options</b>	—			

# Biometric signage solution

# Bar-type Displays

SMART  
SIGNAGE



## D230 (Standalone)

CASE CHARACTERISTICS

- Plastic case with integrated display
- Rail for VESA and clamp mount
- Connectors on the side and on the bottom
- Camera with 2 megapixel
- Speaker
- External power supply or PoE power source
- Cascading power connections
- Fanless cooling
- IP54 protection of front panel
- Ambient temperature range 0–40 °C
- Air humidity range 10–90 %
- 2.9 × 60.3 × 7.5 cm (LWH)

PERFORMANCE FEATURES

Display	1920×158 (23.1")
Processor	Rockchip RK3399, Cortex A72 Dual-Core, A53 Quad-Core (ARM)
Slots	—
Empty slots	—
Memory	2 GB
Graphics	Mali-T864
Display connectors	—
Network	1× Ethernet, Wi-Fi-ac, Bluetooth 5.0
External connections	1× USB 2.0 Typ A, Audio
Internal connections	—
Drives	16 GB Flash, SD card reader
Power supply	24 Watt, 12 Volt DC or PoE (IEEE 802.3at)
Supported operating voltage	12 Volt ±5 % and 19,5 Volt ±5 % (PoE 48 Volt)
Operating system	Android 7.1 ('Nougat')
Further information	<a href="http://go.shuttle.eu/8ksvw">go.shuttle.eu/8ksvw</a>
Options	Concatenation Accessory Kit

\* Errors, technical specifications subject to change. All brand names are property of their respective owners.



Shuttle Computer Handels GmbH · Fritz-Strassmann-Str. 5 · 25337 Elmshorn · Germany  
Phone: +49 (0)4121-476 860 · E-Mail: sales@shuttle.eu

V1/2024

[WWW.SHUTTLE.EU](http://WWW.SHUTTLE.EU)